

# U.S. PUBLIC LAND SURVEY MONUMENT RECORD

For Public Land Survey Corners in:

WI ADMINISTRATIVE CODE A-E 7.08 REQUIREMENT

T. 1 N., R. 2 E

### CORNER CODE INDEX

A	1	2	3	4	5	6	7	8	9	10	11	12	13	14	15	16	17	18	19	20	21	22	23	24	25
B																									
C	6						5				A				3			2						1	
D																									
E																									
F																									
G	7						8				9			10			11							12	
H																									
J																									
K	18						17				16			15			14							13	
L																									
M																									
N																									
O	19						20				21			22			23							24	
P																									
Q																									
R																									
S	30						29				28			27			26							25	
T																									
U																									
V																									
W																									
X	31						32				33			34			35							36	
Y																									
Z																									

BELoit TWP  
ROCK COUNTY WI

IF AVAILABLE  
ROCK COUNTY COORDINATES PREFERRED

North 217,113.76 Elev. \_\_\_\_\_

East 477,710.58

Hor. Datum NAD (83/91) Vert. Datum \_\_\_\_\_

LATITUDE \_\_\_\_\_ ELLIPS. HT. \_\_\_\_\_

LONGITUDE \_\_\_\_\_

GPS (X) \_\_\_\_\_ TRAVERSE (X) \_\_\_\_\_

BASED ON THE FOLLOWING CONTROL:

AUG 25 2003 ADJUSTMENT OF  
COMBINED TOWNSHIPS

PLACE MONUMENT SYMBOL  AT PROPER LOCATION ON ABOVE INDEX

CORNER MONUMENT

WITNESS MONUMENT

BEARINGS ARE BASED ON:

FIELD BOOK \_\_\_\_\_ PAGE # \_\_\_\_\_

SHEET 1 OF 2

SHOW A PLAN VIEW DRAWING DEPICTING THE CORNER MONUMENT AND SURROUNDING PHYSICAL FEATURES, INCLUDING THE EXCAVATION AREA AND DEPTH.

PLANNING & ZONING COMMITTEE ADOPTED THE ABOVE FORM ON 12/2/1982

CORNER CODE N 11 (1/2)

BE566

(B) Describe any record evidence, monument evidence, occupational evidence, testimonial evidence or any other material evidence you considered, and whether the monument was found or placed.

1834 HARRISON EAST ON RAND. BET SECS 16 & 21  
660 ENTER BOTTOM  
1254 BROOK 1.32' CRS S. (NEAR THE HEAD)  
1782 TO A TRAIL LEADING TO TURTLE VILLAGE  
2112 LEFT BOTTOM CRS S.W.  
2640 TEMPY 1/4 SEC COR.  
5258.88 INT. EAST BOUNDARY 66' SOUTH OF POST  
COR. WEST  
2629.44 QUARTER SEC COR. SET A POST & RAISED MOUND ON GROUND  
DESCENDING S.W.  
5258.88 SEC COR.  
1929 BATTERMAN VOL 3 PG 157 FD 4 HH SET R/R AT SURFACE RD. & TIES.  
1949 BATTERMAN MAP #43619 ANGLE 89-52 @ CENTER OF SEC 21 FROM W 1/4 TO  
N 1/4 CORNERS OF SEC 21  
1956 BATTERMAN MAP #442 1328.22 TO N 1/16TH COR OF NE 1/4 SEC 21  
1963 BATTERMAN VOL 4 PG 182 SET TIES. 1328.65 TO S 1/16TH COR OF THE  
SE 1/4 OF SEC 16, 2657.05 TO NE COR SEC 21. SET MON BOX  
1963 WIDOT CTH Q PROJECT 2688.79 TO NW COR SEC 21 & 2657.05 TO NE COR  
SEC 21.  
1965 BATTERMAN VOL 4 PG 175 FD R/R AT SURFACE.  
1984 WIDOT PROJ 5571-01-21 REV 8-2-84 198,245.20; E/W 2,247,796.80  
2667.92 TO NW COR SEC 21.  
1998 BARNES FOUND PIPE IN MONUMENT BOX. ACCEPTED FOUND LOCATION. PIPE  
IS WITHIN .02' OF LINE BETWEEN S 1/4 AND N 1/4 CORNERS OF SEC 21  
AND .21' OF A LINE BETWEEN THE N 1/4 AND SOUTH 1/4 CORNERS OF SEC  
16.

FD 1" PIPE IN MON. BOX & REF. MONUMENTS. PAVEMENT WAS GROUND. CTH Q  
WILL BE PAVED WITHIN THE NEXT FEW WEEKS & THE MONUMENT MAY BE DISTURBED

C) Was the corner restored through acceptance of (1) an obliterated evidence location, or, (2) a found  
perpetuated location?

NO

D) Describe any material discrepancy between the location of the corner as restored or reestablished and the  
location of that corner as previously restored or reestablished by distance and direction. Show the discrepancy on  
the plan view drawing under (a), above. Show the distances between the corner as previously restored or  
reestablished and (1) the corner as restored or reestablished, and (2) to at least 4 of the witness monuments shown  
on the drawing in (a), above.

NONE

(E) Was the corner reestablished through lost corner proportionate methods? If so, show the method, including  
the directions and distances to other public land survey corners used as evidence or used for proportioning the  
corner location.

NO

I, Donald Barnes, hereby certify that the corner location as identified by the corner code index was  
determined by me under my direction and control and that this U.S. Public Land Survey Monument  
Record is correct and complete to the best of my knowledge and belief.

Seal

Donald Barnes

Emboss

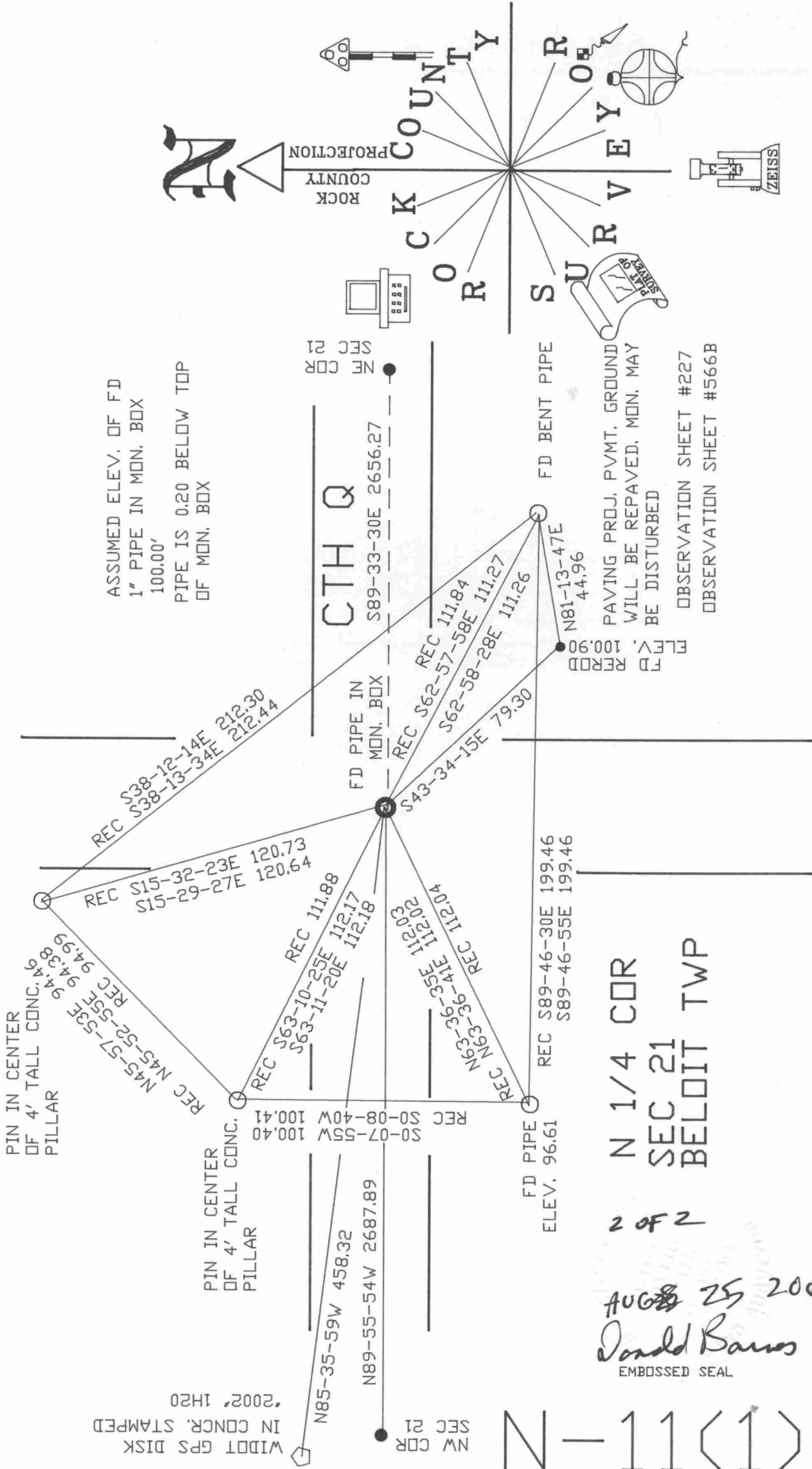
AUG 25, 2003

SHEET 1 OF 2

CORNER CODE **N-11(1)**

A.E. 7.08 REQUIREMENT

NYE SCHOOL RD.



WIDOT GPS DISK IN CONCR. STAMPED '2002' 1H20

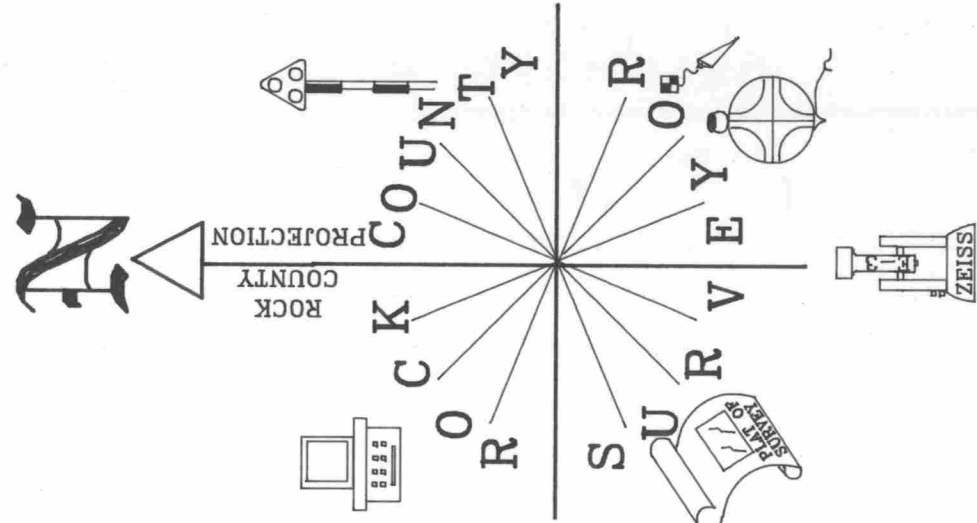
ASSUMED ELEV. OF FD 1" PIPE IN MON. BOX 100.00' PIPE IS 0.20 BELOW TOP OF MON. BOX

AUG 25 2003  
Donald Barnes  
EMBOSSED SEAL

N 1/4 COR  
SEC 21  
BELOIT TWP

2 OF 2

N-11(1)



PAVING PROJ. PVMT. GROUND WILL BE REPAVED. MON. MAY BE DISTURBED  
OBSERVATION SHEET #227  
OBSERVATION SHEET #566B

REC 21  
NW COR

CTH Q  
S89-33-30E 2656.27  
REC 21  
NW COR

N81-13-47E 44.96  
FD BENT PIPE  
FD RFRD  
ELEV. 100.90

REC S89-46-30E 199.46  
REC S89-46-55E 199.46

REC S0-07-55W 100.40  
REC S0-08-40W 100.41  
FD PIPE  
ELEV. 96.61

REC N63-36-41E 1120.3  
REC N63-36-35E 1120.0  
REC N63-36-41E 1120.4

REC S63-10-25E 111.88  
REC S63-11-20E 112.17  
REC S63-11-20E 112.18

REC S15-32-23E 120.73  
REC S15-29-27E 120.64

REC N45-57-53E 94.46  
REC N45-52-55E 94.38  
REC N45-52-55E 94.99

PIN IN CENTER OF 4' TALL CONC. PILLAR

PIN IN CENTER OF 4' TALL CONC. PILLAR