

# U.S. PUBLIC LAND SURVEY MONUMENT RECORD

For Public Land Survey Corners In:

WI ADMINISTRATIVE CODE A-E 7.08 REQUIREMENT

T. 2 N. R. 11 E.

CORNER CODE INDEX

A	1	2	3	4	5	6	7	8	9	10	11	12	13	14	15	16	17	18	19	20	21	22	23	24	25	A
B																										B
C																										C
D																										D
E																										E
F																										F
G																										G
H																										H
J																										J
K																										K
L																										L
M																										M
N																										N
O																										O
P																										P
Q																										Q
R																										R
S																										S
T																										T
U																										U
V																										V
W																										W
X																										X
Y																										Y
Z																										Z

PLYMOUTH TWP  
ROCK COUNTY WI

IF AVAILABLE  
ROCK COUNTY COORDINATES PREFERRED

North \_\_\_\_\_ Elev. \_\_\_\_\_

East \_\_\_\_\_

Hor. Datum \_\_\_\_\_ Vert. Datum \_\_\_\_\_

LATITUDE \_\_\_\_\_ ELLIPS. HT. \_\_\_\_\_

LONGITUDE \_\_\_\_\_

GPS (X) \_\_\_\_\_ TRAVERSE (X) \_\_\_\_\_

BASED ON THE FOLLOWING CONTROL:  
\_\_\_\_\_

PLACE MONUMENT SYMBOL  AT PROPER LOCATION ON ABOVE INDEX

CORNER MONUMENT

WITNESS MONUMENT

(a)

BEARINGS ARE BASED ON: \_\_\_\_\_

FIELD BOOK \_\_\_\_\_ PAGE # \_\_\_\_\_

SHEET 1 OF 3

SHOW A PLAN VIEW DRAWING DEPICTING THE CORNER MONUMENT AND SURROUNDING PHYSICAL FEATURES, INCLUDING THE EXCAVATION AREA AND DEPTH.

PLANNING & ZONING COMMITTEE ADOPTED THE ABOVE FORM ON 12/2/1982

CORNER CODE E-15(1)

PL528

(B) Describe any record evidence, monument evidence, occupational evidence, testimonial evidence or any other material evidence you considered, and whether the monument was found or placed.

- 1833 HARRISON EAST ON RAND. BET 3 & 10  
2640 TEMPY ¼ SEC COR.  
5253.6 INT. E. BDB 40.26' N OF P LAND LEVEL & WET 2<sup>ND</sup>  
RATE GROWTH GRASS & WILLOWS  
COR. WEST  
2626.8 QUARTER SEC. COR. IN MARSH. POST & RAISED  
MOUND  
5253.6 SEC COR
- 1843 STEBBIN TWP RD REC BK 1 PG 2 VARIATION OF NEEDLE 7 ½  
BEGINNING AT THE SE COR OF SEC 1 T2N R11E; THENCE  
WEST 2 ½ MILES (THIS COURSE FROM QUARTER POST ON  
SOUTH SIDE OF SEC 1 TO SW COR SOUTH ON A RANGE FROM  
BELOIT TO MADISON) TO THE QUARTER STAKE ON THE  
SOUTH LINE OF SEC 3; THENCE N72W ONE MILE AND 20  
CHAINS TO A STAKE; THENCE S9 WEST 1079.1' TO A BURR  
OAK TREE; THENCE N70W 815.1' TO A STAKE; THENCE S65W  
2610.3' TO A BLACK OAK TREE; THENCE S45W 1894.2' TO  
SEC BETWEEN SECTIONS 5 & 8, 247.5' EAST OF THE SE COR  
OF SEC 6, T2N R11E; THENCE WEST FOUR MILES 3679.5' TO  
A STAKE ON THE SEC LINE BETWEEN SECS 4 & 9, 660' WEST  
OF THE QUARTER POST; THENCE N43 ½W 838.2' TO A BURR  
OAK TREE; THENCE N65W 3444.54' TO A POINT ON THE LINE  
BETWEEN THE COUNTIES OF ROCK AND GREEN 341.88'  
SOUTH OF THE QUARTER POST ON THE WEST SIDE OF SEC 7,  
T2N, R10E AND THE WHOLE LENGTH OF THE ROAD IS 12  
MILES 3927'
- 1845 PEASE TWP RD REC BK 1 PG 7 BEGINNING AT THE SE COR  
OF SEC 3 IN T2N R11E RUNNING THENCE WEST ON THE  
SOUTH SIDE OF SEC 3 AFORESAID 5214' AND TO THE SE  
COR OF SEC 4, 5854.2' TO THE SE COR OF SEC 5; THENCE  
WEST 5272.74 ON THE SOUTH SIDE OF SEC 5; THENCE WEST  
5287.26' ON THE SOUTH SIDE OF SEC 6 AND TO THE LINE  
BETWEEN RANGE 10 & 11; THENCE WEST 5306.4' ON THE  
SOUTH SIDE OF SEC 1 T2N R10E; "'''''' SAID RD IS 66 WIDE  
& 33' ON EACH SIDE OF THE DESCRIBED RD. VAR OF  
NEEDLE FOUND BY COMPARISON WITH OLD LINES.  
{DISTANCES MATCH ORIG. GOV SURVEYOR'S DIST}
- 1847 TWP RD REC BK 1 PG 19 BEGINNING AT THE SW COR OF  
SEC 2, T2, R11E AND RUNNING WESTERLY BETWEEN SEC 3 &  
10, 4 AND 9, 5 & 8 TO THE HIGHWAY THAT RUNS WEST FROM  
NEAR THE SW COR OF SEC 5 ALL OF THE SAME TWP AND  
RANGE. SAID RD IS 66' IN WIDTH.
- 1855 CHURCH VOL 1 PG 39 & 40 STATES NOTHING ABOUT  
CORNER. SHOWS A DISTANCE OF 2640 TO THE SE AND TO  
THE SW CORNERS OF SECTION 3.
- 1868 LOOKE REMONUMENTATION FIELD NOTES.  
PG 46 EAST BETWEEN SECS 3 AND 10 VAR 5-42  
1810.38 CENTER SLUIDE BRIDGE  
2644.95 INTERSECTED ¼ LINE 3.96' SOUTH OF COR.  
FOUND WHERE STAKE WAS PULLED OUT. IN  
CENTER OF HIGHWAY AND NEARLY IN LINE WITH  
FENCES RUNNING N AND S. VAR CORRECTED 5-47  
CONTINUED EAST FROM ¼ COR. WITH VAR 5-42  
2766.72 CENTER OF SLUIDE BRIDGE  
4505.16 CENTER OF SLUIDE BRIDGE  
5289.9 INTERSECTED EAST BOUNDARY AT COR.
- 1871 RUGER VOL 2 PG 60 FD STONE. 2645.78 TO SW COR SEC 3,  
2650.78 TO SE COR SEC 3, & 2656.00 VAR 5-55 TO DEN SEC 10.
- 1886 RUGER VOL 2 PG 272 STATES NOTHING ABOUT CORNER BUT  
USED IT TO, SUBDIVIDE SECTION 3.

SHEET 1 OF 3 CORNER CODE E-15(1)

Donald Barnes

1/10/03

PL528

1988 BARNES E-15 DID NOT EXCAVATE FOR CORNER. CONCRETE BOX CULVERT IS ON CORNER. PLACED CORNER PROPORTIONATE DISTANCE WITH LOCKE'S REMONUMENTATION DISTANCE AND AT THE CENTER OF THE ROAD AS CALLED FOR BY HIS FIELD NOTES. RESTORED CORNER THROUGH ACCEPTANCE OF OBLITERATED EVIDENCE LOCATION. PLACED NOTHING. CORNER IS ON LINE WITH N/S FENCE. REFERENCED CORNER N 89-59-53W 2647.40 TO NW COR SEC 10 & S89-53-41E 2647.40 TO NE COR SEC 10. 1988 BARNES VOL 6 PG 331 N89-59-53W 2647.40 TO SW COR SEC 3 & S89-53-41E 2647.40 TO SE COR SEC 3  
1994 LATHROP CSM VOL17 PG 340 1" PIPE 2647.32 TO SE SEC 3 A POLY.

FD 4 REFERENCE TIES. MEASURED TO THE TIES & COMPUTED POSITION. ALSO USED MY OLD OBSERVATIONS. ON WEST EDGE OF CONCRETE BOX CULVERT.

*C) Was the corner restored through acceptance of (1) an obliterated evidence location, or, (2) a found perpetuated location?*

ACCEPTED PERPETUATED POSITION

*D) Describe any material discrepancy between the location of the corner as restored or reestablished and the location of that corner as previously restored or reestablished by distance and direction. Show the discrepancy on the plan view drawing under (a), above. Show the distances between the corner as previously restored or reestablished and (1) the corner as restored or reestablished, and (2) to at least 4 of the witness monuments shown on the drawing in (a), above.*

*(E) Was the corner reestablished through lost corner proportionate methods? If so, show the method, including the directions and distances to other public land survey corners used as evidence or used for proportioning the corner location.*

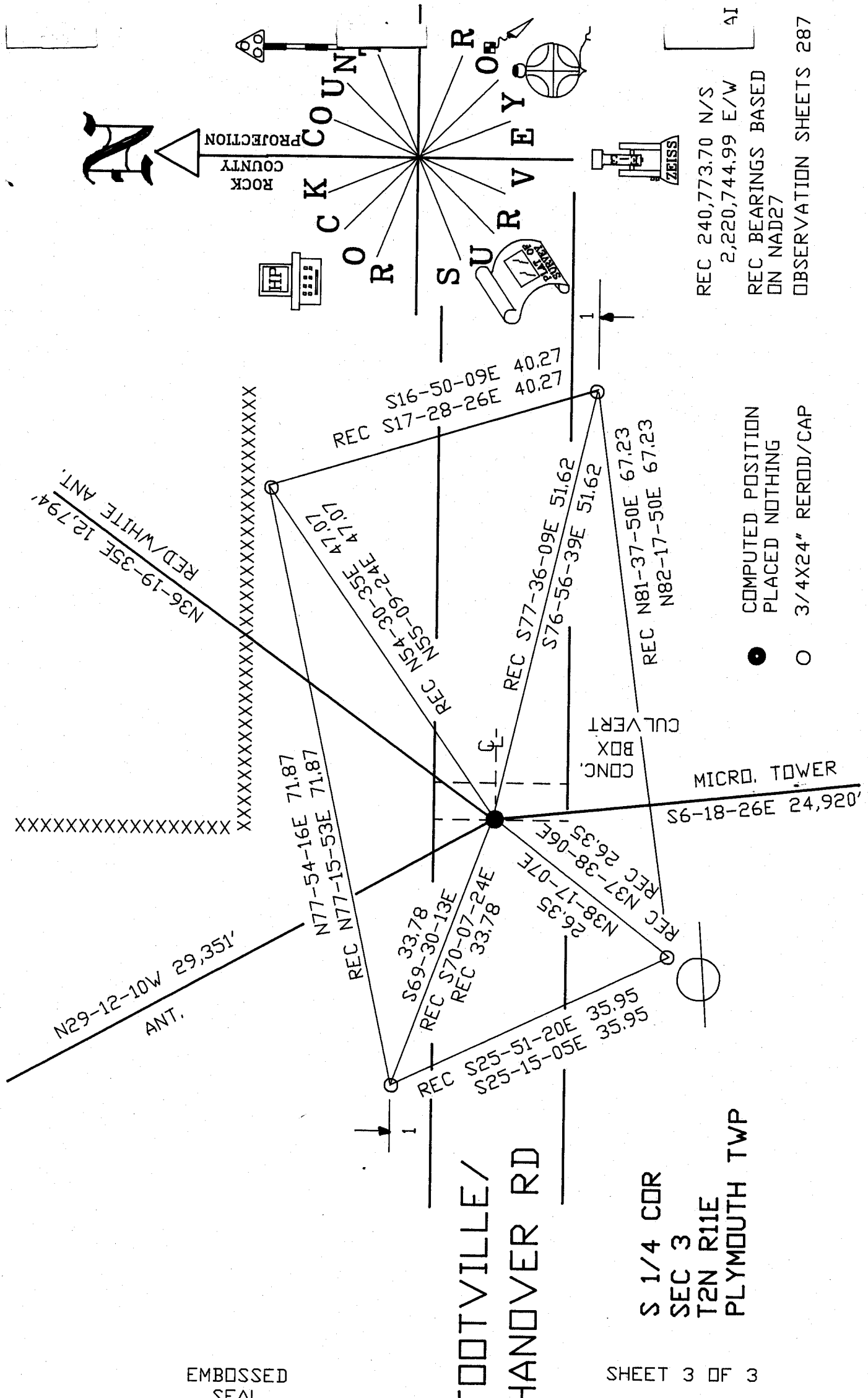
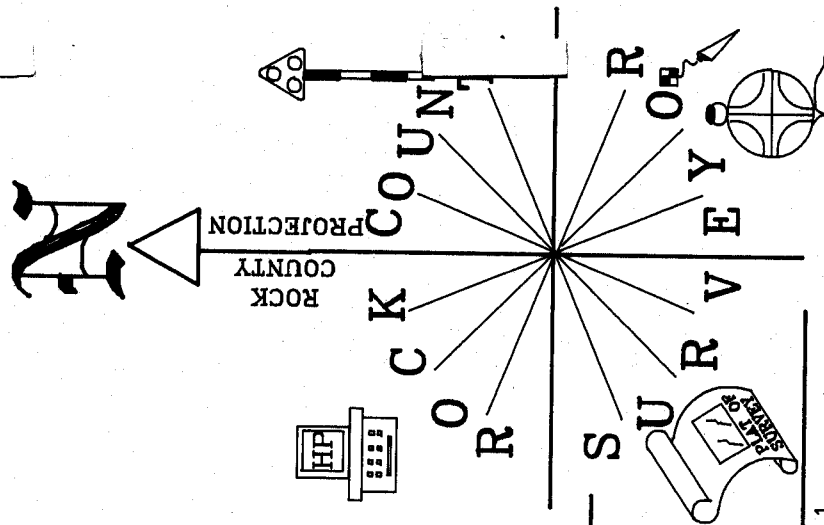
I, Donald Barnes, hereby certify that the corner location as identified by the corner code index was determined by me under my direction and control and that this U.S. Public Land Survey Monument Record is correct and complete to the best of my knowledge and belief.

Seal

Donald Barnes  
1/10/03  
Emboss

SHEET 2 OF 3

CORNER CODE E-15(1)  
A-E 7.08 REQUIREMENT



REC 240,773.70 N/S  
 2,220,744.99 E/W  
 REC BEARINGS BASED  
 ON NAD27  
 41  
 OBSERVATION SHEETS 287

● COMPUTED POSITION  
 ○ PLACED NOTHING  
 ○ 3/4X24" REROD/CAP

XXXXXXXXXXXXXXXXXXXXXXXXXXXX

XXXXXXXXXXXXXXXXXXXXXXXXXXXX

N29-12-10W 29,351'  
 ANT.

FOOTVILLE/  
 HANOVER RD  
 S 1/4 COR  
 SEC 3  
 T2N R11E  
 PLYMOUTH TWP

EMBOSSED SEAL  
*Donald Barnes*  
 1/10/03

SHEET 3 OF 3

E-15(1)

E-15(1)