

U.S. PUBLIC LAND SURVEY MONUMENT RECORD

For Public Land Survey Corners in:

WI ADMINISTRATIVE CODE A-E 7.08 REQUIREMENT

T. 2 N., R. 11 E

CORNER CODE INDEX

PLYMOUTH TWP

ROCK COUNTY WI

IF AVAILABLE
ROCK COUNTY COORDINATES PREFERRED

| | | | | | | | | | | | | | | | | | | | | | | | | | |
|---|----|---|---|---|---|---|---|---|---|----|----|----|----|----|----|----|----|----|----|----|----|----|----|----|----|
| A | 1 | 2 | 3 | 4 | 5 | 6 | 7 | 8 | 9 | 10 | 11 | 12 | 13 | 14 | 15 | 16 | 17 | 18 | 19 | 20 | 21 | 22 | 23 | 24 | 25 |
| B | 6 | | | | | | | | | | | | | | | | | | | | | | | | |
| C | | | | | | | | | | | | | | | | | | | | | | | | | |
| D | | | | | | | | | | | | | | | | | | | | | | | | | |
| E | | | | | | | | | | | | | | | | | | | | | | | | | |
| F | | | | | | | | | | | | | | | | | | | | | | | | | |
| G | 7 | | | | | | | | | | | | | | | | | | | | | | | | |
| H | | | | | | | | | | | | | | | | | | | | | | | | | |
| I | | | | | | | | | | | | | | | | | | | | | | | | | |
| J | | | | | | | | | | | | | | | | | | | | | | | | | |
| K | | | | | | | | | | | | | | | | | | | | | | | | | |
| L | 18 | | | | | | | | | | | | | | | | | | | | | | | | |
| M | | | | | | | | | | | | | | | | | | | | | | | | | |
| N | | | | | | | | | | | | | | | | | | | | | | | | | |
| O | | | | | | | | | | | | | | | | | | | | | | | | | |
| P | 19 | | | | | | | | | | | | | | | | | | | | | | | | |
| Q | | | | | | | | | | | | | | | | | | | | | | | | | |
| R | | | | | | | | | | | | | | | | | | | | | | | | | |
| S | | | | | | | | | | | | | | | | | | | | | | | | | |
| T | 30 | | | | | | | | | | | | | | | | | | | | | | | | |
| U | | | | | | | | | | | | | | | | | | | | | | | | | |
| V | | | | | | | | | | | | | | | | | | | | | | | | | |
| W | | | | | | | | | | | | | | | | | | | | | | | | | |
| X | | | | | | | | | | | | | | | | | | | | | | | | | |
| Y | | | | | | | | | | | | | | | | | | | | | | | | | |
| Z | | | | | | | | | | | | | | | | | | | | | | | | | |

PLACE MONUMENT SYMBOL AT PROPER LOCATION ON ABOVE INDEX

North _____ Elev. _____

East _____

Hor. Datum _____ Vert. Datum _____

LATITUDE _____ ELLIPS. HT. _____

LONGITUDE _____

GPS (X) _____ TRAVERSE (X) _____

BASED ON THE FOLLOWING CONTROL:

CORNER MONUMENT

WITNESS MONUMENT

(a)

BEARINGS ARE BASED ON:

OBSERVATION SHEET 105 & 1523

FIELD BOOK _____ PAGE # _____

SHEET 1 OF 4

SHOW A PLAN VIEW DRAWING DEPICTING THE CORNER MONUMENT AND SURROUNDING PHYSICAL FEATURES, INCLUDING THE EXCAVATION AREA AND DEPTH.

PLANNING & ZONING COMMITTEE ADOPTED THE ABOVE FORM ON 12/2/1982

CORNER CODE E-5(1)

PL523

(B) Describe any record evidence, monument evidence, occupational evidence, testimonial evidence or any other material evidence you considered, and whether the monument was found or placed.

1833 HARRISON NORTH BET SECS 7 & 8

858 LEFT MARSH & ENTER TIMBER
1609.74 WD 16
2640 QUARTER SEC COR. {W.O. 19 S89E 67.32' W.O 20
S89W 58.74'
5280 COR TO SECS 5 6 7 8 {ASPEN 16 S63 11.22' ASPEN
10 S33W 13.2' ASPEN 15 N54W 34.98' WHITE O 13
N52E 8.58' LAND BOLLING 1ST RATE WITH W.O. ASPEN
ELM WALNUT HICKY LYNN CHERRY HAZEL
EAST ON RAND. BET 5 & 8
2640 TEMPY ¼ P
4620 LEFT TIMBER & ENTER MARSH
5272.74 INT. E BDY 57.42' N. OF P.
LAND ROLLING 2ND RATE WITH W.O. ASPEN TIMBER
MUCH HAZEL
COR WEST
2636.37 QUARTER SEC COR {W.O. 30 S60E 84.48' W.O. 18
N6W 67.32' W.O 30 W.O. 18} MARKED
5272.74 SEC COR
WEST BET SECS 6 & 7
2640 TEMPY ¼ P
3168 LEFT TIMBER & ENTER PRAIRIE
5287.26 INT. W. BDY 238.92' N OF P & ESTABLISHED COR TO
SEC 6 & 7 } MARKED POST IN MOUND LAND ROLLING
2ND RATE WITH W.O. WALNUT CHERRY
COR EAST
2647.26 QUARTER SEC COR. {W.O. 24 N11W 15.18' CHERRY
18 S14W 5.28' WD 24 CHERRY} MARKED
5287.26 SEC COR
NORTH BET SECS 5 & 6
2640 QUARTER SEC COR & ENTER MARSH
5148 BROOK 6.6' CRS S.E.
5181 INT. N. BDY AT POST MARK. LEVEL ROLLING 2ND RATE
FOR 1ST ½ LEVEL & WET FOR 2ND ½ TIMBER AS BEFORE
COR TREES TO ¼ SEC {RED O 14 S89W 304.26' RED
O 18 S25W 380.82' DEC 27TH 1833

1843 STEBBIN TWP RD REC BK 1 PG 2 BEGINNING AT THE SE COR OF
SEC 3 IN T2N R11E RUNNING THENCE WEST ON THE SOUTH SIDE
OF SEC 3 AFORESAID 5214' AND TO THE SE COR OF SEC 4,
5854.2' TO THE SE COR OF SEC 5; THENCE WEST 5272.74 ON THE
SOUTH SIDE OF SEC 5; THENCE WEST 5287.26' ON THE SOUTH
SIDE OF SEC 6 AND TO THE LINE BETWEEN RANGE 10 & 11;
THENCE WEST 5306.4' ON THE SOUTH SIDE OF SEC 1 T2N R10E;
"*****" SAID RD IS 66' WIDE & 33' ON EACH SIDE OF THE
DESCRIBED RD. VAR OF NEEDLE FOUND BY COMPARISON WITH
OLD LINES. {DISTANCES MATCH ORIG. GOV SURVEYOR'S DIST}

1843 STEBBIN TWP RD REC BK 1 PG 2 VARIATION OF NEEDLE 7 ½
BEGINNING AT THE SE COR OF SEC 1 T2N R11E; THENCE WEST
2 ½ MILES (THIS COURSE FROM QUARTER POST ON SOUTH
SIDE OF SEC 1 TO SW COR SOUTH ON A RANGE FROM BELOIT
TO MADISON) TO THE QUARTER STAKE ON THE SOUTH LINE OF
SEC 3; THENCE N72W ONE MILE AND 20 CHAINS TO A STAKE;
THENCE 59 WEST 1079.1' TO A BURR OAK TREE; THENCE N70W
815.1' TO A STAKE; THENCE S65W 2610.3' TO A BLACK OAK
TREE; THENCE S45W 1894.2' TO SEC BETWEEN SECTIONS 5 &
8, 247.5' EAST OF THE SE COR OF SEC 6, T2N R11E; THENCE
WEST FOUR MILES 3679.5' TO A STAKE ON THE SEC LINE
BETWEEN SECS 4 & 9, 660' WEST OF THE QUARTER POST;
THENCE N43 ½W 838.2' TO A BURR OAK TREE; THENCE N65W
3444.54' TO A POINT ON THE LINE BETWEEN THE COUNTIES OF
ROCK AND GREEN 341.88' SOUTH OF THE QUARTER POST ON
THE WEST SIDE OF SEC 7, T2N, R10E AND THE WHOLE LENGTH
OF THE ROAD IS 12 MILES 3927'

SHEET 1 OF 4 CORNER CODE E-5(1)

Donald Barnes

May 12, 2003

PL523

1847 TWP RD REC BK 1 PG 15 "'''' THENCE WEST ON THE SOUTH LINE OF SAID SEC 5 247.5' TO THE SW COR OF SAID SEC: THENCE WEST ON THE SOUTH LINE OF SEC 6 TO THE SW COR OF SAID SEC 6 T2R11E. SAID RD IS 66' IN WIDTH.

1857 CHURCH VOL 1 PG 66. NO STATEMENT ABOUT CORNER. SHOWS A DISTANCE OF 2640 TO E 1/4 CORNER OF SECTION 7.

1863 TWP RD REC BK 1 PG 44 COMMENCING AT THE NW COR OF SEC 8 THENCE SOUTH ONE HALF A MILE BETWEEN SEC 7 & 8 THE LINE OF SAID SURVEY TO BE THE CENTER OF SAID HIGHWAY AND THE SAME IS ESTABLISHED 66' IN WIDTH, IN WITNESS WHEREOF WE HAVE HERE UNTO''''''

1865 LOCKE VOL 1 PG 234. BTS DUG OUT. SHOWS A DISTANCE OF 2607.26 TO SOUTH QUARTER CORNER OF SECTION 5.

1868 LOCKE VOL 1 PG 309 & MAP #4329 BTS DUG OUT AND CORNER LOST. SET IT FROM 1/16TH AND QUARTER CORNER TO SOUTH. SET BR O STAKE WITH LARGE H.H. ON SOUTH.

1868 LOCKE REMONUMENTATION FIELD NOTES.

PG 55 SOUTH BETWEEN SECS 5 & 6 VAR 7-42

92.4 NORTH BANK BASS CREEK
105.6 SOUTH BANK BASS CREEK
2361.48 INTERSECTED 1/4 LINE AT COR. FOUND BTS AND COR AS SET BY SELF AT JUNCTION OF WEST & SOUTH FENCES. (SEE CO. SURVEYORS RECORD) BT 588W 271.26'

CONTINUED SOUTH WITH VAR 7-38

3036 FOOT OF BLUFF
5017.98 INTERSECTED SOUTH BOUNDARY 1.32' WEST OF COR. FOUND COR. AS SET BY SELF (SEE CO. SURVEYORS RECORD) AND STUMPS OF BTS IN SECS 7 & 8 COR IN ROAD VAR CORRECTED 7-40 SEPT 5TH 1868

PG 56 EAST BETWEEN SECS 5 & 8 VAR 5-12

1327.92 1/16TH COR SET BY SELF (SEE CO. S. RECORD)
2655.84 INTERSECTED 1/4 LINE 11.88' SOUTH OF COR. FOUND COR. AS SET BY SELF (SEE CO. S RECORD) AND SOUTH B.T. COR 16.5' NORTH OF COR. POST OF FENCE RUNNING S AND W. AND IN LINE WITH FENCE RUNNING S. VAR CORRECTED 5-27

SET OFF 16.5' SOUTH OF 1/4 COR. AND

CONTINUED EAST WITH VAR 5-05

5316.3 INTERSECTED EAST BOUNDARY 16.17' SOUTH OF COR. VAR CORRECTED 5-05 SEPT 5 1868

PG 78 NORTH BETWEEN SECS 7 & 8 VAR 7-05

0 SET OFF 13.2' WEST
990 SET OFF 11.55'
2670.36 INTERSECTED 1/4 LINE AT COR. FOUND STUMPS OF B.T.S AND STONE SET ON COR. BY SELF. (SEE CO. SURVEYORS RECORD SEC 8) VAR CORRECTED 7-07

CONTINUED NORTH FROM 1/4 COR WITH VAR 7-15

0 SET OFF 7.26' WEST'
5326.2 INTERSECTED NORTH BOUNDARY AT COR VAR CORRECTED 7-24 SEPT 15 1868

PG 79 WEST BETWEEN SECS 6 AND 7 VAR -

328.02 CENTER OF BRIDGE 5.94' WIDE
2655.84 INTERSECTED 1/4 LINE 4.62' NORTH OF COR. FOUND STUMPS OF B.T.S AND STAKE. NORTH BT. IS N11E VAR CORRECTED -

CONTINUED WEST FROM 1/4 COR WITH VAR -

2655.84 SET OFF 9.9' SOUTH
5334.45 INTERSECTED WEST BOUNDARY 38.94' NORTH OF COR. VAR CORRECTED - SEPT 15 1868

1869 RUBER VOL 2 PG 9 FOUND STONE MONUMENT SET BY LOCKE. SHOWS DISTANCES OF 2657.50 TO NORTH AND 2653.86 TO EAST QUARTER CORNERS OF SECTION 7.

SHEET 2 OF 4 CORNER CODE E-5(1)

Donald Barnes

May 12, 2003

PL523

1870 RUGER VOL 2 PG 16 FOUND STONE POST SET BY LOCKE.
1892 BLEEDORN VOL 2 PG 463 DOES NOT DESCRIBE MON. 2659.8 TO
W 1/4 COR SEC 5.
1960 BATTERMAN JR. VOL 4 PG 77 FOUND STONE MONUMENT.
REFERENCED SAME.
1979 BARNES VOL 6 PG 1 REC MEASUREMENTS
1983 COMBS MAP #13238 SET R/R SPIKE.
1989 BARNES VOL 6 PG 402 FD PIN S89-11-26W 2655.71 TO N 1/4
COR SEC 7, S1-09-06E 2655.07 TO E 1/4 COR SEC 7
1989 BARNES E-5 FOUND CUT LIMESTONE 12" DEEP AND 3.00' SHORT
TIES. PLACED 2 MAGNETS BY STONE AND POLY MONUMENT ON
TOP OF STONE. REFERENCED SAME.
1994 OFS CSM VOL 18 PG 46
1995 LATHROP CSM 19-15 POLY MON 2654.35 TO E 1/4 COR SEC 7 A
POLY
1998 COMBS CSM21-218 POLY MON. 2656.35 TO S 1/4 COR SEC 5 A
PK, 2655.65 TO S 1/4 COR SEC 6 A ALUM.
1999 KREBS MAP #7568 FD POLY-ALUM TOP BROKE OFF. N1-24-01W
2652.28 TO W 1/4 COR SEC 5, S89-31-43E 2656.39 TO S 1/4 COR
SEC 5, & S1-08-20E 2653.11 TO W 1/4 COR SEC 8. BEARINGS
BASED ON STATE PLANE COORDINATES FROM GPS ORFORDVILLE
GPS & ITS REFERENCE (N14-14-23E)
2000 LATHROP 2000 LATHROP CSM VOL 23 PG 145 FD POLY

FD POLY MON. & TIES

C) Was the corner restored through acceptance of (1) an obliterated evidence location, or, (2) a found perpetuated location?

ACCEPED FD POLY., WHICH PERPETUATES THE LOCATION OF THE CUT L.S.

D) Describe any material discrepancy between the location of the corner as restored or reestablished and the location of that corner as previously restored or reestablished by distance and direction. Show the discrepancy on the plan view drawing under (a), above. Show the distances between the corner as previously restored or reestablished and (1) the corner as restored or reestablished, and (2) to at least 4 of the witness monuments shown on the drawing in (a), above.

(E) Was the corner reestablished through lost corner proportionate methods? If so, show the method, including the directions and distances to other public land survey corners used as evidence or used for proportioning the corner location.

I, **Donald Barnes**, hereby certify that the corner location as identified by the corner code index was determined by me under my direction and control and that this U.S. Public Land Survey Monument Record is correct and complete to the best of my knowledge and belief.

Seal

Donald Barnes

May 12 2003

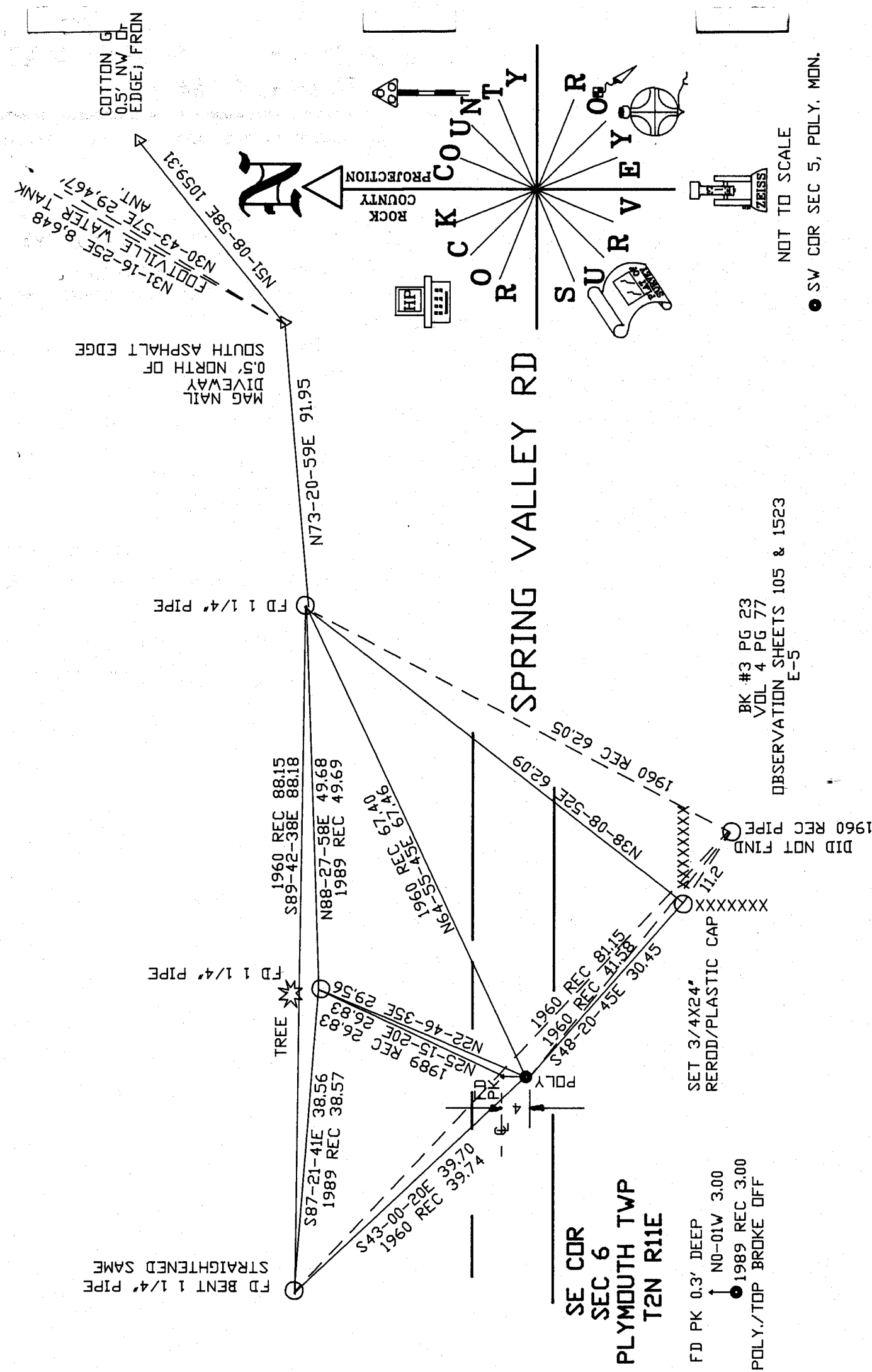
Emboss

SHEET 3 OF 4

CORNER CODE

E-5(1)

A-E 7.08 REQUIREMENT



FD BENT 1 1/4" PIPE STRAIGHTENED SAME

MAG NAIL DIVEWAY 0.5' NORTH OF SOUTH ASPHALT EDGE

N31-16-25E 8.648
 EDOTVILLE WATER TANK
 N30-43-57E 29.467
 ANT. 29.467
 N51-08-58E 105.31
 COTTON G 0.5' NW OF EDGE; FROM

Donald Barnes
 EMBOSSED SEAL
 May 12, 2003

SE COR
 SEC 6
 PLYMOUTH TWP
 T2N R11E

FD PK 0.3' DEEP
 NO-01W 3.00
 1989 REC 3.00
 FD POLY./TOP BROKE OFF

SET 3/4X24" REROD/PLASTIC CAP

DID NOT FIND 1960 REC PIPE

BK #3 PG 23
 VOL 4 PG 77
 OBSERVATION SHEETS 105 & 1523
 E-5

NOT TO SCALE

SW COR SEC 5, POLY. MON.

SHEET 4 OF 4

E-5(1)