

U.S. PUBLIC LAND SURVEY MONUMENT RECORD

For Public Land Survey Corners in:

WI ADMINISTRATIVE CODE A-E 7.08 REQUIREMENT

T. 2 N., R. 11 E

CORNER CODE INDEX

A	1	2	3	4	5	6	7	8	9	10	11	12	13	14	15	16	17	18	19	20	21	22	23	24	25
B																									
C	6																								
D																									
E																									
F	1																								
G		8																							
H																									
I																									
J																									
K	18																								
L		17																							
M																									
N																									
O																									
P	19																								
Q		20																							
R																									
S	30																								
T		29																							
U																									
V																									
W	31																								
X		32																							
Y																									
Z																									

Plymouth TWP
ROCK COUNTY WI

IF AVAILABLE
ROCK COUNTY COORDINATES PREFERRED

North _____ Elev. _____

East _____


Hor. Datum _____ Vert. Datum _____

LATITUDE _____ ELLIPS. HT. _____

LONGITUDE _____

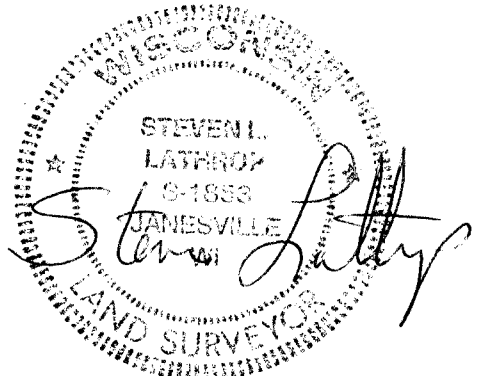
GPS (X) _____ TRAVERSE (X) _____

BASED ON THE FOLLOWING CONTROL:

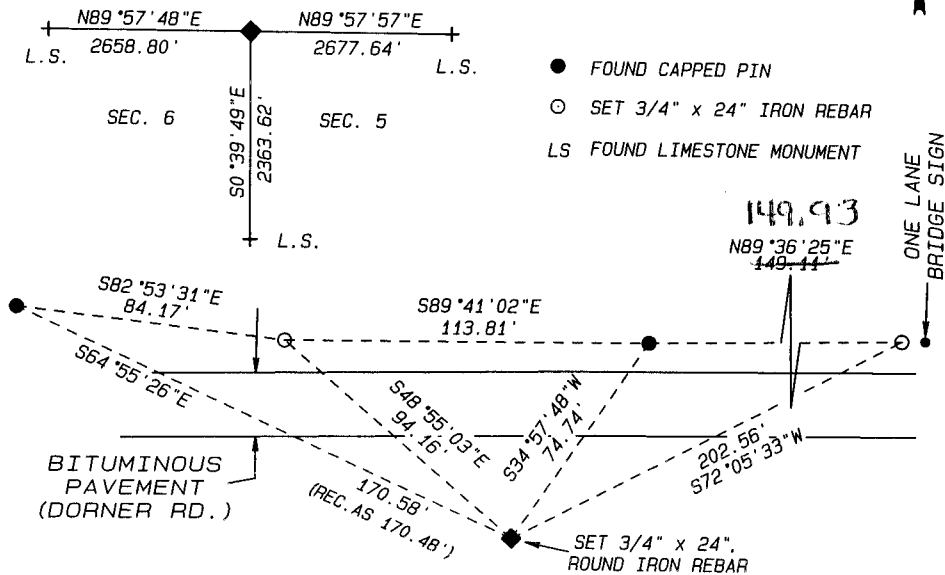
PLACE MONUMENT SYMBOL  AT PROPER LOCATION ON ABOVE INDEX

 CORNER MONUMENT  WITNESS MONUMENT

(a) BEARINGS ARE BASED ON: Assumed Datum



SET CORNER BACK FROM TWO EXISTING REFERENCE CORNERS. MEASUREMENTS CHECKED WITHIN REASON TO SECTION CORNERS TO EAST, WEST AND SOUTH. SET 2 ADDITIONAL REFERENCE CORNERS.



FIELD BOOK _____ PAGE # _____

SHEET 1 OF 1

SHOW A PLAN VIEW DRAWING DEPICTING THE CORNER MONUMENT AND SURROUNDING PHYSICAL FEATURES, INCLUDING THE EXCAVATION AREA AND DEPTH.

PLANNING & ZONING COMMITTEE ADOPTED THE ABOVE FORM ON 12/2/1982

CORNER CODE A-5 (1)