

U.S. PUBLIC LAND SURVEY MONUMENT RECORD

For Public Land Survey Corners in:

WI ADMINISTRATIVE CODE A-E 7.08 REQUIREMENT

T. 2N., R. 11E

CORNER CODE INDEX

A	1	2	3	4	5	6	7	8	9	10	11	12	13	14	15	16	17	18	19	20	21	22	23	24	25
B																									
C	6						5				4				3				2				1		
D																									
E																									
F																									
G	1						8			9				10				11				12			
H																									
J																									
K																									
L	18						17			16				15				14				13			
M																									
N																									
O																									
P	19						20			21				22				23				24			
Q																									
R																									
S																									
T	30						29			28				27				26				25			
U																									
V																									
W																									
X	31						32			33				34				35				36			
Y																									
Z																									

PLYMOUTH TWP
ROCK COUNTY WI

IF AVAILABLE
ROCK COUNTY COORDINATES PREFERRED

North _____ Elev. _____

East _____

Hor. Datum _____ Vert. Datum _____

LATITUDE _____ ELLIPS. HT. _____

LONGITUDE _____

GPS (X) _____ TRAVERSE (X) _____

BASED ON THE FOLLOWING CONTROL:

PLACE MONUMENT SYMBOL AT PROPER LOCATION ON ABOVE INDEX

CORNER MONUMENT WITNESS MONUMENT

BEARINGS ARE BASED ON:

OBSERVATION SHEET 990

FIELD BOOK _____ PAGE # _____

SHEET 1 OF 4

SHOW A PLAN VIEW DRAWING DEPICTING THE CORNER MONUMENT AND SURROUNDING PHYSICAL FEATURES, INCLUDING THE EXCAVATION AREA AND DEPTH.

PLANNING & ZONING COMMITTEE ADOPTED THE ABOVE FORM ON 12/2/1982

CORNER CODE A-19(5)

PL510

(B) Describe any record evidence, monument evidence, occupational evidence, testimonial evidence or any other material evidence you considered, and whether the monument was found or placed.

1833 MULLETT WEST ON SOUTH SIDE SECTIONS 34 & 35 {35}

- 1518 LEAVE PRAIRIE TO ENTER MARSH
- 2442 STREAM 6.6' C SOUTH
- 2508 LEAVE MARSH AND ENTER PRAIRIE
- 2640 SET QUARTER SECTION POST IN PRAIRIE AND MADE MOUND
- 5280 SET POST CORNERS SECTIONS 24 & 35 IN PRAIRIE AND MADE MOUND. LAND ROLLING PRAIRIE SECOND RATE. BY OBSERVATION VAR 7-45E

1868 LOCKE REMONUMENTATION FIELD NOTES.

- PG 38 EAST ON NORTH LINE SEC 2 VAR 5-45
- 505.56 CENTER SLUICE BRIDGE
- 2657.49 INTERSECTED 1/4 LINE FOR TOWN 3 7.26' NORTH OF COR. FOUND STONE WITH STAKE SET BY ANDREW CODDINGTON IN OLD MOUND. COR. IN CENTER OF HIGHWAY AND IN LINE OF FENCE RUNNING N. VAR CORRECTED 5-36
- CONTINUED EAST FROM 1/4 COR OF T3 WITH VAR 7-12
- 3034.02 CENTER OF BRIDGE 33' WIDE OVER CREEK.
- 5313.66 INTERSECTED EAST BOUNDARY AT COR.
- 5316.96 INTERSECTED EAST BOUNDARY OF SEC 35 T3N AT COR.
- 2656.83 SET 1/4 COR 0.66' WEST OF 1/4 COR FOR T3N 1/4 MONUMENT MARKED WITH FIG 2 ON SOUTH FACE. AUG 28, 1868

1877 RUGER VOL 2 PG 234 SHOWS A STONE MONUMENT AND STATES THAT IT IS SOUTH OF A LINE DRAWN FROM SECTION CORNER TO SECTION CORNER. SHOWS A DISTANCE OF 2654.19 TO THE NW CORNER AND 2652.54 TO THE NE CORNER. USED THE CORNER TO SUBDIVIDE SECTION 2. SHOWS A DISTANCE OF 2625.09 TO THE CENTER OF SECTION 2.

1933 SUNNY VOL 3 PG 235 SET 1" X 36" PIPE IN CONCRETE PAVEMENT 8.0 SOUTH OF CENTERLINE. SHOWS A DISTANCE OF 2656.9 TO THE NW CORNER AND 2656.9 TO THE NE CORNER. SHOWS A DISTANCE OF 2625.1 TO THE FENCE INTERSECTION AT THE CENTER OF SECTION 2.

1977 BARNES VOL 5 PG 362 & 364 FOUND SUNNY'S PIPE AND REPLACED IT WITH AN ALUMINUM MONUMENT.

1979 SCHROEDER VOL 5 PG 531 USED THE SOUTH QUARTER CORNER OF SECTION 35 T3N TO SUBDIVIDE SECTION 35. THAT CORNER WAS ESTABLISHED BY USING SUNNY'S PIPE.

1988 BARNES A-19 & Z-19 (CENTER TWP) DUG AND FOUND CUT LIMESTONE 26" DEEP 3.0 SOUTH OF CENTER OF PAVEMENT. PLACED MAGNET ON TOP OF STONE. IT APPEARED FROM THE EXCAVATION SITE THAT SUNNY NEVER DUG FOR THE CORNER. REFERENCED CORNER. DID NOT ACCEPT PREVIOUS ALUM. MON. ACCEPTED FD CUT L.S. DID NOT PLACE ANY MON. BECAUSE OF PROPOSED RD CONSTRUCTION. S 1/4 COR SEC 35 IS N89-14-43E 0.66'. USING DOT CONTROL S 1/4 COR SEC 35 IS N/S 246,093.47; E/W 2,225,932.01

1988 BARNES VOL 6 PG 388 & 389 N89-20-19W 2658.06 TO NW COR SEC 2, N89-14-44E 2654.68 TO NE COR SEC 2, S1-10-04E 2628.69 TO INT OF 1/4 LINES IN SEC 2, & 0.66 WEST OF S 1/4 COR SEC 35.

1-20/03

Donald Barnes

PL510

1989 WIDOT PROJ #1704-03-22 STH MAP #16701 CUT LIMESTONE
246,093.46; 2,225,931.35 S ¼ COR SEC 35 CENTER TWP MON TO BE
SET 246,093.47; 2,25,932.01. S89-13-07EW 0.66' FROM S ¼ COR
SEC 34 TO N ¼ COR SEC 2.

1992 BARNES A-19(1) & Z-19(1) FOUND DOT DISK @ REFERENCE
MONUMENTS. SHOWS TIES TO OLD ALUM MON & NEW CORNERS.

1992 BARNES A-19(2) & Z-19(2) ADDITIONAL TIES AS SHOWN IN A-19(1)

2000 COMBS A-19(4) FD DOT DISK NB3-58-10W 13.25 FROM SET
PK NAIL. THIS DISK DID NOT CHECK D.O.T. RIGHT OF WAY MAP
DISTANCES EAST-WEST FOR SECTION CORNER LOCATION. DISK DID
NOT CHECK D. BARNES PREVIOUSLY MEASURED DISTANCES EAST-
WEST. NB9-14-40E 2657.74 TO DOT DISK @ SE COR SEC 35, S89-20-
22E 2659.14 TO DOT DISK @ SW COR SEC 35, 0.66' EAST OF N ¼ COR
SEC 3, AND STATEMENT "PRORATED DISTANCES USING DON BARNES
ANGLE. D. BARNES ANGLE @ S ¼ COR SEC 35 FROM SW TO SE COR
SEC 34 IS 178-35-02. REFERENCED SAME. FD DOT DISK NB3-58-10W
13.25 & SET IRON REBAR FOR REF. MONUMENTS. SET PK MASONRY
NAIL AT S ¼ COR SEC 35.

2000 BARNES A-19(3) & Z-19(2)(CENTER TWP) COMBS CONTACTED ME
ABOUT EXISTING TIES. USED OLD OBSERVATIONS & REDREW TIES TO
CLARIFY THINGS. DOT DISK IS NOT IN THE SAME POSITION AS THE
FOUND CUT LIMESTONE. DID NOT ACCEPT DISK. INCLUDES A PAGE OF
BEARINGS & DISTANCES TO ERRONEOUS MONUMENTS AND ACCEPTED
MONUMENTS.

2000 COMBS CSM24-55 SET PK 0.66' WEST OF S ¼ COR SEC 35
CENTER TWP. 2654.36 NE COR SEC 2 (DOT DISK).

2000 COMBS CSM24-63 FD PK 2658.48 TO NW COR SEC 2 A DOT DISK

C) Was the corner restored through acceptance of (1) an obliterated evidence location, or, (2) a found perpetuated location?

ACCEPTED FOUND CUT LIMESTONE. USED MY 2000 OBSERVATIONS

D) Describe any material discrepancy between the location of the corner as restored or reestablished and the location of that corner as previously restored or reestablished by distance and direction. Show the discrepancy on the plan view drawing under (a), above. Show the distances between the corner as previously restored or reestablished and (1) the corner as restored or reestablished, and (2) to at least 4 of the witness monuments shown on the drawing in (a), above.

DOT DISK IS NOT IN THE SAME POSITION AS THE FOUND CUT LIMESTONE.
DID NOT ACCEPT DISK.

(E) Was the corner reestablished through lost corner proportionate methods? If so, show the method, including the directions and distances to other public land survey corners used as evidence or used for proportioning the corner location.

I, DONALD BARNES, HEREBY CERTIFY THAT THE CORNER POINTS AS IDENTIFIED BY THE CORNER CODE INDEX WERE, IN A FIELD SURVEY, ESTABLISHED, RE-ESTABLISHED, MONUMENTED, RE-MONUMENTED, RECOVERED OR RESTORED AS EXPRESSED BELOW AND IN CONFORMANCE WITH THE REGULATIONS AND RULES AS REQUIRED IN THE CURRENT MANUAL OF SURVEY INSTRUCTIONS OF THE UNITED STATES DEPARTMENT OF INTERIOR, BUREAU OF LAND MANAGEMENT.

embossed

seal

1-20-03
Donald Barnes

SHEET 2 OF 4

CORNER CODE **A-19(5)**

AFFIX YOUR LAND SURVEYOR SEAL

**T3N R11E
CENTER TWP**

N88-06-15W 80.34
REC N88-05-00W 80.34
REC S88-05-26'E 80.34'
REC S88-05-26'E 80.34'

FD DOT DISK
IN CONCRETE

FD DOT DISK
IN CONCRETE

FD DOT DISK
IN CONCRETE

FD DOT DISK
IN CONCRETE

FD DOT DISK
IN CONCRETE

FD DOT DISK
IN CONCRETE

FD DOT DISK
IN CONCRETE

FD DOT DISK
IN CONCRETE

FD DOT DISK
IN CONCRETE

FD DOT DISK
IN CONCRETE

FD DOT DISK
IN CONCRETE

FD DOT DISK
IN CONCRETE

S88-39-33E 83.66
REC S88-38-18E 83.66
REC S89-17-07E 83.68
REC 83.69

REC N0-03-56'W 129.51'

REC N10-17-23'W 63.39'

REC N9-38-37E 63.39'

REC N10-14-14E 63.89'

REC N9-38-37E 63.39'

REC N10-14-14E 63.89'

REC N9-38-37E 63.39'

REC N10-14-14E 63.89'

REC N9-38-37E 63.39'

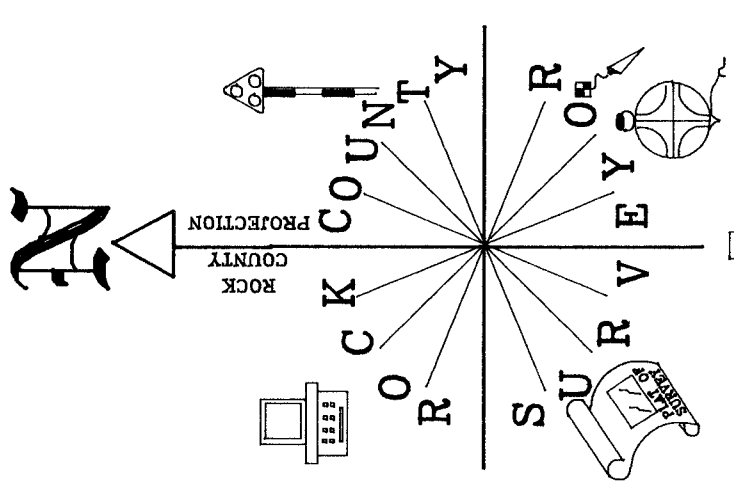
REC N10-14-14E 63.89'

REC N9-38-37E 63.39'

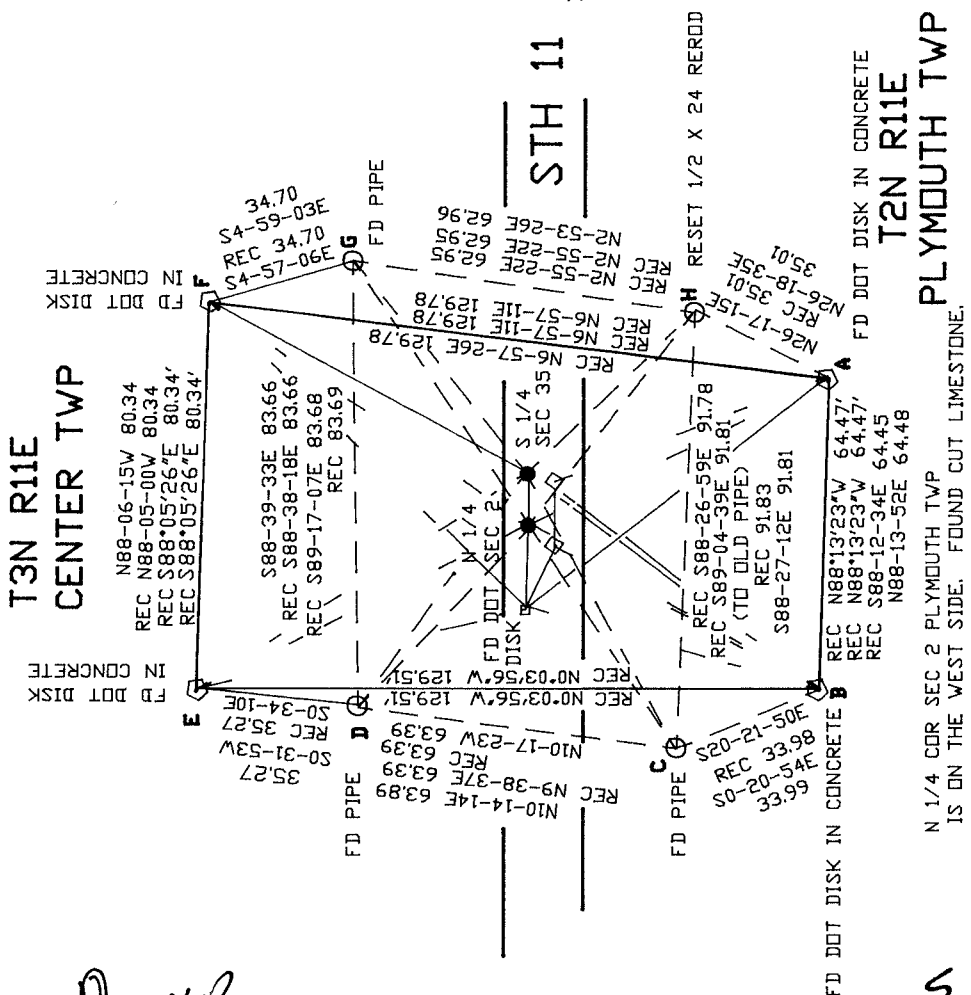
REC N10-14-14E 63.89'

TO CLARIFY ALL THE PREVIOUS TIES, I USED ALL THE PREVIOUS ANGLES AND DISTANCES TO COMPLETE THE FOLLOWING U.S. PUBLIC MONUMENT RECORD.

N 1/4 COR 2
ERRONEOUS COR
FD DOT DISK
13.54
REC N80-28-19'W
12.10
REC S67-45-59E
12.10
REC N43-11-36E
3.22
REC N43-02-56E
3.22
REC N43-39-20E
3.20
REC N43-11-36E
3.26
REC N89-03-25E
0.66
REC 0.66
REC 0.66
REC N89-53-05E
0.66
S 1/4 COR 35
ERRONEOUS COR
FD ALUM
0.66
REC S88-21-56E
0.66
REC S63-44-47E
0.66



OBSERVATION SHEETS
10, 1510, 7213,
25, 23



Donald Barnes
EMBOSSSED SEAL
1/20/03

N 1/4 COR SEC 2 PLYMOUTH TWP IS ON THE WEST SIDE. FOUND CUT LIMESTONE.

NEW CORNERS
OLD ALUM

TO N 1/4 COR SEC 2

LIMESTONE

A N22-59-51W 67.05
 B N32-38-12E 70.93
 C N60-34-22E 57.30
 D S48-19-07E 51.89
 E S28-50-29E 79.66
 F S31-59-30W 79.11
 G S54-03-15W 55.44
 H N53-58-03W 51.58
 NW COR SEC 2 S88-42-05E 2658.15

RECORD

N23-00-52W 67.02
 N32-38-34E 70.88
 N60-34-50E 57.29
 S48-15-39E 51.89
 S28-47-59E 79.67
 S31-58-29W 79.15
 S54-02-47W 55.47
 N54-00-23W 51.56
 1868 LOCKE 2656.83
 1877 RUGER 2652.54
 1988 BARNES 2658.06
 2000 COMBS 2658.48
 1868 LOCKE 2656.83
 1877 RUGER 2652.54
 1988 BARNES 2654.68
 1997 BARNES 2654.69

NE COR SEC 2 N89-52-52E 2654.67

TO ERRONEOUS DOT DISK RECORD

A N31-43-38W 75.20
 B N21-53-34E 66.78
 E S20-22-11E 72.03
 F S40-24-13E 85.20
 NW COR SEC 2 S88-44-36E 2644.74
 NE COR SEC 2 N89-55-48E 2668.03

TO S 1/4 COR SEC 35
 NEW POSITION-NO MON.

A N22-28-54W 66.78
 B N33-05-11W 71.27
 C N61-13-56E 57.87
 D S48-47-20E 52.38
 E S29-15-01E 79.98
 F S31-32-53W 78.77
 G S53-38-32W 54.92
 H N53-32-35W 51.04
 SW COR SEC 35 S88-39-00E 2656.63

RECORD

N22-28-50W 66.78
 N33-05-18E 71.26
 N61-14-37E 57.86
 S48-45-43E 52.38
 S29-13-32E 79.98
 S31-34-07W 78.78
 S53-39-04W 54.92
 N53-32-58W 51.03
 1989 WIDOT 2658.75
 1997 COMBS 2659.14
 1997 BARNES 2658.72
 1988 BARNES 2658.72
 1877 RUGER 2654.19
 1868 LOCKE 2657.49
 1868 LOCKE 2659.47
 1989 WIDOT 2657.31
 1997 COMBS 2657.74
 1988 BARNES 2657.31

SE COR SEC 35 N89-52-49E 2657.30

TO OLD ALUM. MON. @ ERRONEOUS S 1/4 COR SEC 35

A N25-14-55W 65.40
 B N32-35-34E 67.85
 C N62-23-15E 54.58
 D S44-59-10E 52.41
 E S26-54-52E 81.12
 F S32-01-12W 82.18
 G S52-59-56W 58.34
 H N57-23-13W 51.54

SW COR SEC 35 S88-39-00E 2656.63
 SE COR SEC 35 N89-49-49E 2659.54

1933 SUNNY 2656.90
 1979 SCHROEDER 2659.50

TO OLD ALUM. MON. @
 ERRONEOUS N 1/4
 COR SEC 2

RECORD

A N25-33-11W 65.84
 B N32-07-19E 67.79
 C N61-54-28E 54.25
 D S44-47-11E 51.87
 E S26-40-30E 80.67
 F S32-24-39W 82.24
 G S53-29-23W 58.59
 H N57-27-20W 52.10
 NW COR SEC 2 S88-39-01E 2656.00
 NE COR SEC 2 N89-49-52E 2656.88

N25-32-52W 65.84
 N32-07-16E 67.78
 N61-55-02E 54.25
 S44-45-56E 51.87
 S26-39-14E 80.67
 N32-25-45E 82.25
 S53-30-00W 58.59
 N58-03-15W 52.12
 1933 SUNNY 2656.9
 1933 SUNNY 2656.9
 1977 BARNES 2656.86

S52-52-54W 58.5958.58

TO CLARIFY ALL THE PREVIOUS TIES, I USED ALL THE
 PREVIOUS ANGLES AND DISTANCES TO COMPILE THE FOLLOWING
 U.S. PUBLIC MONUMENT RECORD.

EMBOSSSED SEAL

SHEET 4 OF 4

Donald Barnes

1-20/03

A-19(4)