

Paper weight-110# (minimum)

Black nonfading ink required

# U.S. PUBLIC LAND SURVEY MONUMENT RECORD

For Public Land Survey Corners In:  
T. 2N. R. 11E. 4th P.M.

WI ADMINISTRATIVE CODE A-E 7.08 REQUIREMENT  
REV 10/23/2004 USMONREC.DWG

CORNER CODE INDEX

PLYMOUTH TWP  
ROCK COUNTY WI

IF AVAILABLE  
ROCK COUNTY COORDINATES PREFERRED

A	2	3	4	5	6	7	8	9	10	11	12	13	14	15	16	17	18	19	20	21	22	23	24	25	A
B		6				5					4				3					2				1	B
C																									C
D																									D
E																									E
F																									F
G																									G
H																									H
J																									J
K																									K
L																									L
M																									M
N																									N
O																									O
P																									P
Q																									Q
R																									R
S																									S
T																									T
U																									U
V																									V
W																									W
X																									X
Y																									Y
Z																									Z

North \_\_\_\_\_ Elev. \_\_\_\_\_

East \_\_\_\_\_

Hor. Datum \_\_\_\_\_ Vert. Datum \_\_\_\_\_

LATITUDE \_\_\_\_\_ ELLIPS. HT. \_\_\_\_\_

LONGITUDE \_\_\_\_\_

NAD83(91) \_\_\_\_\_ NETWORK ADJ. YR \_\_\_\_\_

GPS (X) \_\_\_\_\_ TRAVERSE (X) \_\_\_\_\_

BASED ON THE FOLLOWING CONTROL:

PLACE MONUMENT SYMBOL  AT PROPER LOCATION ON ABOVE INDEX

CORNER MONUMENT

WITNESS MONUMENT

BEARINGS ARE BASED ON:-----

FIELD BOOK \_\_\_\_\_ PAGE # \_\_\_\_\_

SHEET 1 OF 6

SHOW A PLAN VIEW DRAWING DEPICTING THE CORNER MONUMENT AND SURROUNDING PHYSICAL FEATURES, INCLUDING THE EXCAVATION AREA AND DEPTH.

PLANNING & ZONING COMMITTEE ADOPTED THIS FORM ON 12/2/1982

CORNER CODE A-17(5)

**PL509 NEGORSEC3**

(B) Describe any record evidence, monument evidence, occupational evidence, testimonial evidence or any other material evidence you considered, and whether the monument was found or placed.

**1833 MULLETT**

*WEST ON SOUTH SIDE SECTION 34*

- 2640 SET QUARTER SECTION POST IN PRAIRIE AND MADE MOUND**
- 5280 SET POST CORNER SECTIONS 33 & 34 IN PRAIRIE AND MADE MOUND LAND ROLLING PRAIRIE SECOND RATE.**

*WEST ON SOUTH SIDE SECTIONS 34 & 35 {35}*

- 1518 LEAVE PRAIRIE TO ENTER MARSH**
- 2442 STREAM 6.6' C SOUTH**
- 2508 LEAVE MARSH AND ENTER PRAIRIE**
- 2640 SET QUARTER SECTION POST IN PRAIRIE AND MADE MOUND**
- 5280 SET POST CORNERS SECTIONS 34 & 35 IN PRAIRIE AND MADE MOUND. LAND ROLLING PRAIRIE SECOND RATE. BY OBSERVATION VAR 7-45E**

**1833 HARRISON** *NORTH BET 2 & 3*

- 132 LEFT MARSH & ENTER DRY PRAIRIE**
- 2640 QUARTER SEC COR. SET POST & RAISED MOUND**
- 5306.4 INT. N. BDY AT POST AND MARKED SAME FOR SECS 2 & 3 LAND ROLLING 1<sup>BT</sup> RATE PRAIRIE**

**1847 TWP RD RECORDS BK 1 PG 18 "BEGINNING AT THE SOUTHEAST COR OF SEC 3, T2N R11E AND RUNNING NORTH ON THE EAST LINE OF SEC TO THE NORTHEAST COR OF SAID SEC 3 AND FROM THE SW COR OF THE EAST HALF OF THE EAST HALF OF SEC 34 T3N R11E; THENCE NORTH ON THE WEST LINE OF SAID SEC 34 TO THE NORTH LINE OF SAID SEC 34. SAID RD IS FOUR RODS IN WIDTH.**

**1866 LOCKE REMONUMENTATION**

*PG 38 EAST ON NORTH LINE SEC 2 VAR 5-45*

- 505.56 CENTER SLUICE BRIDGE**
  - 2657.49 INTERSECTED ¼ LINE FOR TOWN 3 7.26' NORTH OF COR. FOUND STONE WITH STAKE SET BY ANDREW CODDINGTON IN OLD MOUND. COR. IN CENTER OF HIGHWAY AND IN LINE OF FENCE RUNNING N. VAR CORRECTED 5-36**
- CONTINUED EAST FROM ¼ COR OF T3 WITH VAR 7-12*
- 3034.02 CENTER OF BRIDGE 33' WIDE OVER CREEK.**
  - 5313.66 INTERSECTED EAST BOUNDARY AT COR.**
  - 5316.96 INTERSECTED EAST BOUNDARY OF SEC 35 T3N AT COR.**
  - 2656.83 SET ¼ COR 0.66' WEST OF ¼ COR FOR T3N MONUMENT MARKED WITH FIG 2 ON SOUTH FACE. AUG 28, 1868**

*PG 37 NORTH BETWEEN SECS 2 & 3 VAR 7-20*

- 1327.26 LIMESTONE IN CENTER OF HIGHWAY SET BY CHURCH.**
- 2654.52 INTERSECTED ¼ LINE AT COR. FOUND STAKE & STONE & B.T.S TAKEN BY CHURCH. COR. IN ROAD & IN LINE OF E & W FENCE. CONTINUED NORTH WITH VAR 7-20**
- 4756.62 CENTER OF SLUICE BRIDGE**
- 5357.22 INTERSECTED NORTH BOUNDARY 2.64' WEST OF COR. FOUND OLD STAKE IN CENTER OF HIGHWAYS AND NEARLY IN LINE WITH FENCE RUNNING N. VAR CORRECTED 7-16 AUG 28, 1868**

SHEET 1 OF 6

CORNER CODE **A-17(5)**

*David Barnes*  
*10-12-2009*

PL509 NECORSEC3

PG 48 WEST ON NORTH LINE SEC 3 VAR 7

- 2668.05 INTERSECTED  $\frac{1}{4}$  LINE FOR SEC 34 TOWN 3 N AT COR. FOUND OLD STAKE IN CENTER OF HIGHWAY AND IN LINE OF FENCES RUNNING NORTH AND SOUTH.
- 2654.85 SET  $\frac{1}{4}$  COR 13.2' EAST OF  $\frac{1}{4}$  COR. FOR TOWN 3 THE SEC. CORs WEST BEING LOST.
- 2979.9 CENTER SLUICE BRIDGE 5.28' WIDE
- 4068.9 CENTER SLUICE BRIDGE 5.28' WIDE
- 5300.13 INTERSECTED WEST BOUNDARY 12.62' SOUTH OF COR. SET AS PREVIOUSLY STATED (PAGE 47) VAR CORRECTED 6-44 MARKED  $\frac{1}{4}$  MONUMENT WITH FIGURE 3 ON SOUTH FACE. SEPT 3 1868
- 1877 RUGER VOL 2 PG 234 FOUND STONE MONUMENT. USED CORNER TO SUBDIVIDE THE NW QUARTER OF SECTION 2. SHOWS A DISTANCE OF 2654.19 TO THE NORTH QUARTER CORNER OF SECTION 2.
- 1886 RUGER VOL 2 PG 272 STATES NOTHING ABOUT COR. VAR 4-55 2654.52 TO N  $\frac{1}{4}$  COR SEC 3.
- 1933 SUNNY VOL 3 PG 235 SET 1"X36" PIPE IN CONCRETE PAVEMENT; 7.9' NORTH OF CENTERLINE OF PAVEMENT. SHOWS A DISTANCE OF 2653.6 TO THE NORTH QUARTER CORNER OF SECTION 3 AND 2656.9 TO THE NORTH QUARTER CORNER OF SECTION 2.
- 1958 BATTERMAN JR. VOL 3 PG 235 FOUND 1" PIPE 1' FROM NORTH EDGE OF PAVEMENT.
- 1971 LEE CSM VOL 2 PG 84 REFERENCE POINT OR PK (LEGEND)
- 1977 BARNES VOL 5 PG 349 STATES NOTHING ABOUT MON. 2654.75 TO W  $\frac{1}{4}$  COR SEC 35
- 1977 BARNES VOL 5 PG 364 FOUND 1" PIPE 0.3' DEEP AND REPLACED WITH ALUMINUM MONUMENT. PLACED REFERENCE PIPES.
- 1982 LEE CSM 11-131 ALUM
- 1988 BARNES A-17 & Z-17 (CENTER TWP) FIELD BOOK 3 PG 9 FOUND LARGE 6  $\frac{1}{2}$ " X 9  $\frac{1}{2}$ " X 12' STONE POINT UP AND UNDER THAT FOUND CUT LIMESTONE. CUT LIMESTONE IS 2.6' DEEP. PLACED MAGNET ON TOP OF STONE. EXCAVATION INDICATES THAT SUNNY DID NOT DIG FOR CORNER. FOUND DOT DISK. REFERENCED SAME. COR IS 6' NORTH OF CENTER OF PVMT. USING DOT CONTROL ALUM MON IS 246,125.95 N/S; 2,223,272.88 E/W & CUT LIMESTONE IS 246,124.14 N/S; 2,223,273.46' E/W
- 1988 BARNES VOL 6 PG 388 & 389 STATES NOTHING ABOUT MON. S89-20-19E 2658.06 TO N  $\frac{1}{4}$  COR SEC 2, S88-43-19W 2654.71 TO N  $\frac{1}{4}$  COR SEC 3, & S1-04-00E 2701.33 TO E  $\frac{1}{4}$  COR SEC 3.
- 1989 WIDOT STH 11 MAP #16698 PROJECT 1704-03-22 ALUM. MON. SET BY DONALD BARNES 246,124.14; 2,223,273.46. N2-04-07W 2656.24 TO E  $\frac{1}{4}$  COR SEC 34 CENTER TWP. N88-43-23E 2667.94 TO S  $\frac{1}{4}$  COR SEC 34 CENTER TWP., S1-03-59E 2695.72 TO E  $\frac{1}{4}$  COR SEC 3

SHEET 2 OF 6  
CORNER CODE A-17(5)

*Donald Barnes*

10-12-2009

**PL509 NECORSEC3**

- 1992 BARNES A-17 (1) MONUMENT WILL BE DESTROYED BY ROAD CONSTRUCTION. CORNER AS DESCRIBED IN PREVIOUS U.S. PUBLIC LAND SURVEY MONUMENT RECORD IS BEING PERPETUATED. FOUND DOT REFERENCE MONUMENTS & SHOW DISTANCES & BEARINGS TO CUT LIMESTONE & ALUM MON @ NE COR SEC 3. ALUM MON IS JUST NORTH OF CUT LIMESTONE.
- 1992 BARNES A-17(2) SHOWS DISTANCES TO CUT LIMESTONE, OLD ALUM. MON., & DOT DISK @ NE COR SEC 3. DID NOT ACCEPT DOT DISK.
- 2000 COMBS A-19(4) FD DOT DISK N83-58-10W 13.25 FROM SET PK NAIL. THIS DISK DID NOT CHECK D.O.T. RIGHT OF WAY MAP DISTANCES EAST-WEST FOR SECTION CORNER LOCATION. DISK DID NOT CHECK D. BARNES PREVIOUSLY MEASURED DISTANCES EAST-WEST. FROM S 1/4 COR SEC 35 N89-14-40E 2657.74 TO DOT DISK @ SE COR SEC 35, FROM S 1/4 COR SEC 35 S89-20-22E 2659.14 TO DOT DISK @ SW COR SEC 35, S 1/4 COR SEC 35 0.66' EAST OF N 1/4 COR SEC 2, AND STATEMENT "PRORATED DISTANCES USING DON BARNES ANGLE. D. BARNES ANGLE @ S 1/4 COR SEC 35 FROM SW TO SE COR SEC 34 IS 178-35-02. REFERENCED (N 1/4 COR SEC 2) SAME. @ N 1/4 COR SEC 2 FD DOT DISK N83-58-10W 13.25 & SET IRON REBAR FOR REF. MONUMENTS. SET PK MASONRY NAIL AT N 1/4 COR SEC 2.
- 2000 COMBS CSM 24-63 DOT DISK 2658.48 FROM NW COR SEC 2 TO FD PK AT N 1/4 COR SEC 2
- 2003 BARNES A-17(3) CALLS FOR THE NE COR SEC 3 AND THE SE COR SEC 34 AS BEING THE SAME. FD 4 WIDOT DISK IN CONC. FOR THE REFERENCE CORNERS. CALLS FOR REFERENCE TIES TO THE FD LIMESTONE, OLD ALUM. MON., & WIDOT DISK. DID NOT ACCEPT THE DOT DISK WHICH MONUMENTED THE OLD ALUM. MON. & NOT THE FD CUT LIMESTONE.
- 2008 LATHROP A-17(4) SET PK MASONRY NAIL FROM REFERENCE MONUMENT & COUNTY COORDINATES. [FD SE REF. REC DOT DISK S0-25-37E 2701.36 TO FD PIPE @ E 1/4 COR SEC 3; S32-15-59E 109.84 TO SE REF DISK. [REC IS 109.85] FD REBAR N17-18W 1.94 FROM SET PK.

PRIOR TO RESURFACING I FD ALL 4 REC DOT REFERENCE DISKS IN CONC. LIMESTONE IS A COMMON CORNER FOR CENTER & PLYMOUTH TWP. AFTER RESURFACING, I FD PK/DOT FLASHER. THIS IS THE LS LOCATION.

SHEET 3 OF 6  
CORNER CODE A-17(5)

*Donald  
Barnes*

*10-12-2009*

C) Was the corner restored through acceptance of (1) an obliterated evidence location, or, (2) a found perpetuated location?

ACCEPTED FOUND CUT LIMESTONE. DID NOT ACCEPT DOT DISK. IN 2008 LATHROP A-17(4) SET PK MASONRY NAIL FROM REFERENCE MONUMENT & COUNTY COORDINATES. THIS IS IN HARMONY WITH THE CUT LIMESTONE.

D) Describe any material discrepancy between the location of the corner as restored or reestablished and the location of that corner as previously restored or reestablished by distance and direction. Show the discrepancy on the plan view drawing under (a), above. Show the distances between the corner as previously restored or reestablished and (1) the corner as restored or reestablished, and (2) to at least 4 of the witness monuments shown on the drawing in (a), above.

IT APPEARS THAT IN 1992 WIDOT MONUMENTED THE OLD ALUMINUM MONUMENT LOCATION. THE OLD ALUM. MON. PERPETUATED SUNNY'S 1933 SET PIPE. IN 2008 LATHROP SET A PK FROM THE TIES WHICH FIT THE CUT LIMESTONE. HE ALSO FD A REROD N17-18W 1.94.

I, **Donald Barnes**, hereby certify that the corner location as identified by the corner code index was determined by me under my direction and control and that this U.S. Public Land Survey Monument Record is correct and complete to the best of my knowledge and belief.

EMBOSSSED  
Seal



10-12-2009

SHEET 4 OF 6

CORNER CODE **A-17(5)**

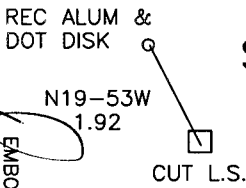
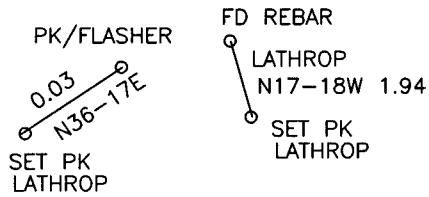
AFFIX YOUR LAND SURVEYOR SEAL

AFTER NEW PVMT FD PK/FLASHER  
STAMPED WIDOT SURVEY

2008 LATHROP SET PK FROM REFERENCE MONUMENT &  
COUNTY COORDINATES.  
1992 FD ALUM. MON, DOT DISK IN CONC, & CUT LIMESTONE  
1988 CUT LIMESTONE IS 2.6' DEEP  
CUT LIMESTONE IS THE CORNER

OBSERVATION 1-509  
OBSERVATION SHEET 7097 & 7100 PHOTO 826  
OBSERVATION SHEET #233PL REC ELEV 825.9X  
FB#3 PG 9 FD CON. MON  
LAYING ON ITS SIDE  
G:\CENDISK\AUTO\629CE.DWG  
G:\CENDISK\SOFT\629CE(SOFT)

FD DOT DISK  
IN CONC.  
2' SOUTH OF  
E/W FENCE TO WEST  
1' DEEP  
PHOTO 824  
ELEV 822.6X



STH 11

PRIOR TO PROJ I DID NOT FD DISK  
AFTER PAV. ELEV 828.5  
AFTER PAVING I FD PHOTO 828  
WIDOT PK/FLASHER REC ELEV 828.0X

NE COR  
SEC 3  
PLYMOUTH TWP  
T2N R11E &  
SEC COR  
SEC 34  
CENTER TWP  
T3N R11E

DUNBAR  
ROAD

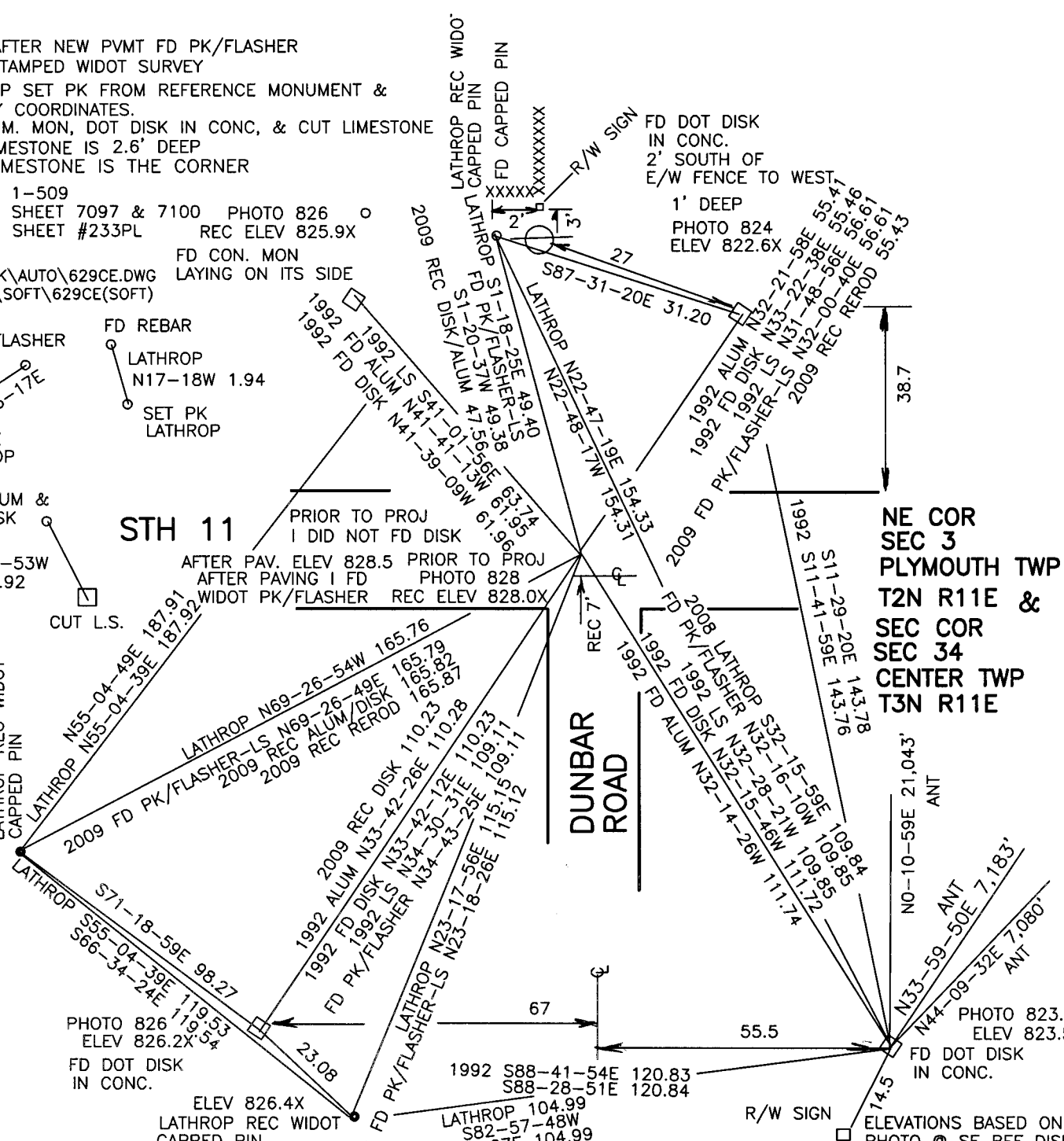
ANT  
NO-10-59E 21.043'

ANT  
N33-59-50E 7.183'  
ANT  
N44-09-32E 7.080'

PHOTO 823.5  
ELEV 823.5X  
FD DOT DISK  
IN CONC.

ELEVATIONS BASED ON  
PHOTO @ SE REF DISK  
OF 823.5

*Barney*  
10/12/2009



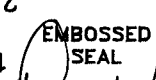
1868 LOCKE 13.2  
 1989 WIDOT 13.2  
 1933 SUNNY 3-235 13.2  
 1976 BARNES 5-204 1.93  
 1989 WIDOT 13.20  
 1992 BARNES A-15(1) 13.20  
 1997 BARNES N89-35-24E 13.20  
 1997 COMBS A15 13.25  
 WIDOT INVERSE S36-37-17E 22.13  
 2002 REIGEL #14302 26.52  
 2004 BARNES N89-34-16E 13.20  
 2009 BARNES N89-34-29E 13.20

CENTER TWP  
 34

1833 HARRISON 0.0  
 1833 MULLETT 2640

2009 BARNES N89-21-39E 2667.96  
 2004 BARNES N89-21-40E 2667.99  
 1997 BARNES N89-21-37E 2667.92  
 1989 WIDOT N88-43-23E 2667.94  
 1997 BARNES N89-21-37E 2667.92  
 1988 BARNES 6-388 2667.91  
 1868 LOCKE 2668.05  
 1833 MULLETT 2640

1989 WIDOT 2,220,619.41  
 246,046.92



*Rod Barnes*

A-17(5)

10/12/2009

T3N R11E  
 35

1977 BARNES 5-349 2654.75  
 1989 DOT N2-04-07W 2656.24  
 2009 ADJ N1-13-59W 2656.66

2009 ADJ S88-42-08E 2658.81  
 2004 BARNES S88-42-07E 2658.83  
 2000 COMBS A-19 S89-20-22E 2659.14  
 1997 COMBS 2659.14  
 1997 BARNES S88-42-10E 2658.72  
 1989 WIDOT 2658.75  
 1988 BARNES 6-388 2658.72  
 1877 RUGER 2-234 2654.19  
 1868 LOCKE 2657.49  
 1833 MULLETT 2640

2000 COMBS CSM24-55  
 1997 COMBS A-19 0.66  
 1989 WIDOT 0.66  
 1988 BARNES 6-389 0.66  
 1977 BARNES 5-364 0.66  
 1933 SUNNY 3-230 0.66  
 1868 LOCKE 0.66

3

1868 LOCKE VAR7-00 2654.85  
 1886 RUGER 2-272 VAR4-55 2654.52  
 1933 SUNNY 3-235 2653.6  
 1988 BARNES 6-388 2654.71  
 1989 WIDOT INVERSE N88-20-00E 2655.17  
 2004 BARNES N89-21-36E 2654.76  
 2009 BARNES N89-21-35E 2654.76

1833 HARRISON 2666.4  
 1866 LOCKE REMON 2702.7  
 1988 BARNES 6-388 2701.33  
 1989 DOT S1-03-59E 2695.72  
 1989 DOT S0-25-37E 2701.36  
 2009 ADJ S0-25-42E 2701.37

2 1877 RUGER 2-234 VAR4-45 2654.19  
 1933 SUNNY 3-235 2656.9  
 1988 BARNES 6-388 2658.06  
 1989 WIDOT INVERSE S89-20-19E 2658.07  
 2000 COMBS CSM24-63 2658.48  
 2004 BARNES S88-42-06E 2658.17  
 2009 ADJ S88-42-07E 2658.17

1989 WIDOT 246,093.46  
 2,225,931.35

1989 WIDOT 2,223,273.46  
 246,124.14

T2N R11E  
 PLYMOUTH  
 TWP