

U.S. PUBLIC LAND SURVEY MONUMENT RECORD

For Public Land Survey Corners In: WI ADMINISTRATIVE CODE A-E 7.08 REQUIREMENT

T. 1 N. - R. 12 E. of the 4th P.M.

CORNER CODE INDEX

(PLACE "◆" SYMBOL AT PROPER PLSS CORNER LOCATION)

	1	2	3	4	5	6	7	8	9	10	11	12	13	14	15	16	17	18	19	20	21	22	23	24	25		
A											◆																A
B																											B
C																											C
D																											D
E																											E
F																											F
G																											G
H																											H
J																											J
K																											K
L																											L
M																											M
N																											N
O																											O
P																											P
Q																											Q
R																											R
S																											S
T																											T
U																											U
V																											V
W																											W
X																											X
Y																											Y
Z																											Z
	1	2	3	4	5	6	7	8	9	10	11	12	13	14	15	16	17	18	19	20	21	22	23	24	25		

BELOIT TWP
ROCK COUNTY WI

ROCK COUNTY COORDINATES
(GNSS DERIVED VIA WISCORS)

North 233269.46 Elev.

East 477816.82

Hor. Datum NAD83 (NA2011)

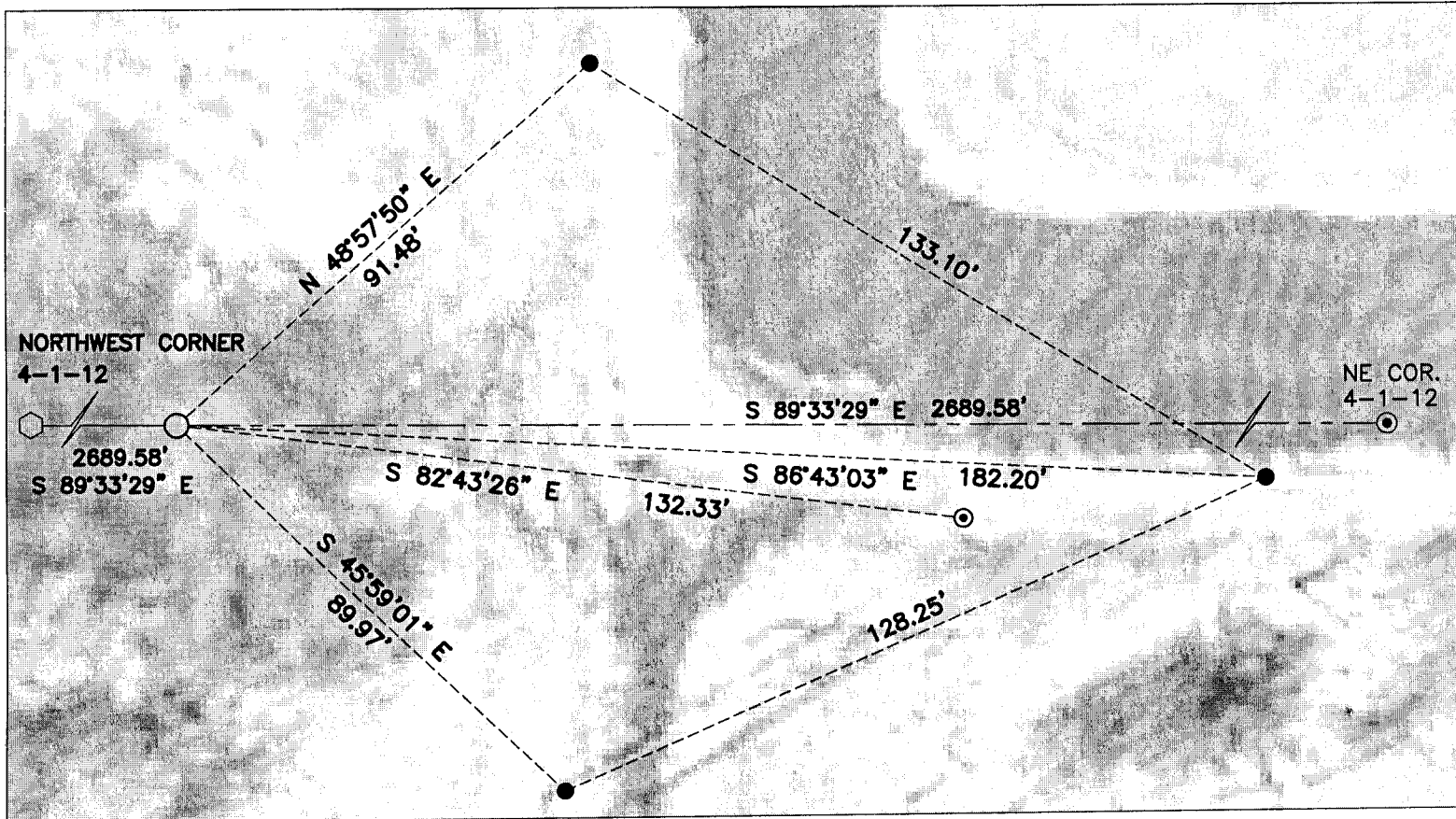
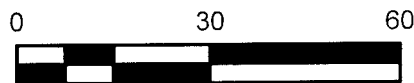
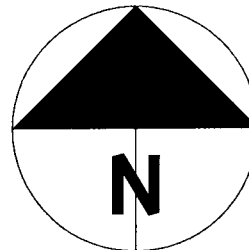
Vert. Datum

BASIS OF BEARINGS

Wisconsin County Coordinate System
Rock County Datum

(a) LEGEND

- - 5/8" x 24" REBAR SET, (RED CAP W/"PLSS WITNESS")
- - ALUMINUM MONUMENT SET
- ⊙ - IRON REBAR FOUND
- ⊙ - IRON PIPE FOUND
- ⊙ - IRON PIPE IN MONUMENT BOX FOUND
- - STONE FOUND
- - LIMESTONE FOUND
- △ - RAILROAD SPIKE FOUND
- ◇ - ALUMINUM MONUMENT FOUND



SHEET 1 OF 2

FIELD BOOK 2013 PAGE # 13

CORNER CODE A-11(1)

B) Describe any record evidence, monument evidence, occupational evidence, testimonial evidence or any other material evidence you considered, and whether the monument was found or placed.

This corner was never set as part of the Original Government Surveys so beyond the Northwest and Northeast corners for Section 4, no other evidence was used. The corner has been calculated in the past and the most recent tie was filed by Don Barnes in 1998. Ties on that sheet refer to section corners around the section and two ties were set, of which one remains. This computed position differs from Barnes by 1.2 feet, +/-, who did not compute the location based on the North line of Section 4. Surveys by Hugh Lee in 1952, 1971 & 1974 call the "split" distance of 2690.59 feet and mine is 2689.58 feet. This corner position agrees with the computed position and called for rebar on Finley Road as shown on a C.S.M. prepared by Robert Leuenberger, (Vol. 19, Pg.'s 56-57). I set an aluminum monument at the corner.

C) Was the corner restored through acceptance of (1) an obliterated evidence location, or, (2) a found perpetuated location?

The aluminum monument set is the original corner for this location.

D) Describe any material discrepancy between the location of the corner as restored or reestablished and the location of that corner as previously restored or reestablished by distance and direction. Show the discrepancy on the plan view drawing under (a), above. Show the distances between the corner as previously restored or reestablished and (1) the corner as restored or reestablished, and (2) to at least 4 of the witness monuments shown on the drawing in (a), above.

The aluminum monument set is the original corner for this location.

There are previous tie-sheets for Section 4, (1851-1858), that show sketches of both Section 4, (Beloit), and Section 33, (Rock), that are ambiguous. Also, fencing from the South to the North near the N/S centerline of Section 4 is East of the actual line and may or may not have been based on the previous location for the South ¼ of Section 33, (Rock). This situation has been known since the time of the Leuenberger CSM. I performed much of the fieldwork for that CSM. Given the history of this corner and the lack of a monument ever being set I split the distance between the NE and NW corners of Section 4, as prescribed by Instructions.

(E) Was the corner reestablished through lost corner proportionate methods? If so, show the method, including the directions and distances to other public land survey corners used as evidence or used for proportioning the corner location.

This corner is at the split of the Northwest corner of Section 4, (Aluminum monument found), and Northeast corner, (Iron rebar). Bearings and distances are shown on the face of the map.

I, Jason R. Houle, hereby certify that the corner location as identified by the corner code index was determined by me under my direction and control and that this U.S. Public Land Survey Monument Record is correct and complete to the best of my knowledge and belief.



CORNER CODE: A-11(1)
(A.E. 7.08 REQUIREMENT)