

# U.S. PUBLIC LAND SURVEY MONUMENT RECORD

For Public Land Survey Corners In:

WISCONSIN ADMINISTRATIVE CODE A-E 7.08 REQUIREMENT

T. 03 N. R. 11 E. 4th P.M.

CENTER TWP  
ROCK COUNTY WI

CORNER CODE INDEX

A	1	2	3	4	5	6	7	8	9	10	11	12	13	14	15	16	17	18	19	20	21	22	23	24	25	A
B																										B
C																										C
D																										D
E																										E
F																										F
G																										G
H																										H
J																										J
K																										K
L																										L
M																										M
N																										N
O																										O
P																										P
Q																										Q
R																										R
S																										S
T																										T
U																										U
V																										V
W																										W
X																										X
Y																										Y
Z																										Z

IF AVAILABLE  
ROCK COUNTY COORDINATES PREFERRED

North 289113.102 Elev. \_\_\_\_\_

East 437557.687

Hor. Datum \_\_\_\_\_ Vert. Datum \_\_\_\_\_

LATITUDE \_\_\_\_\_

LONGITUDE \_\_\_\_\_

ELLIPS. HT. \_\_\_\_\_

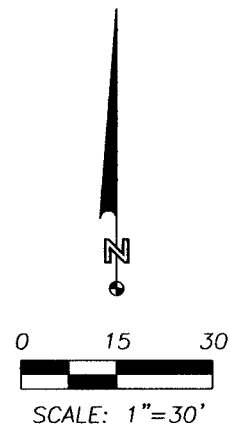
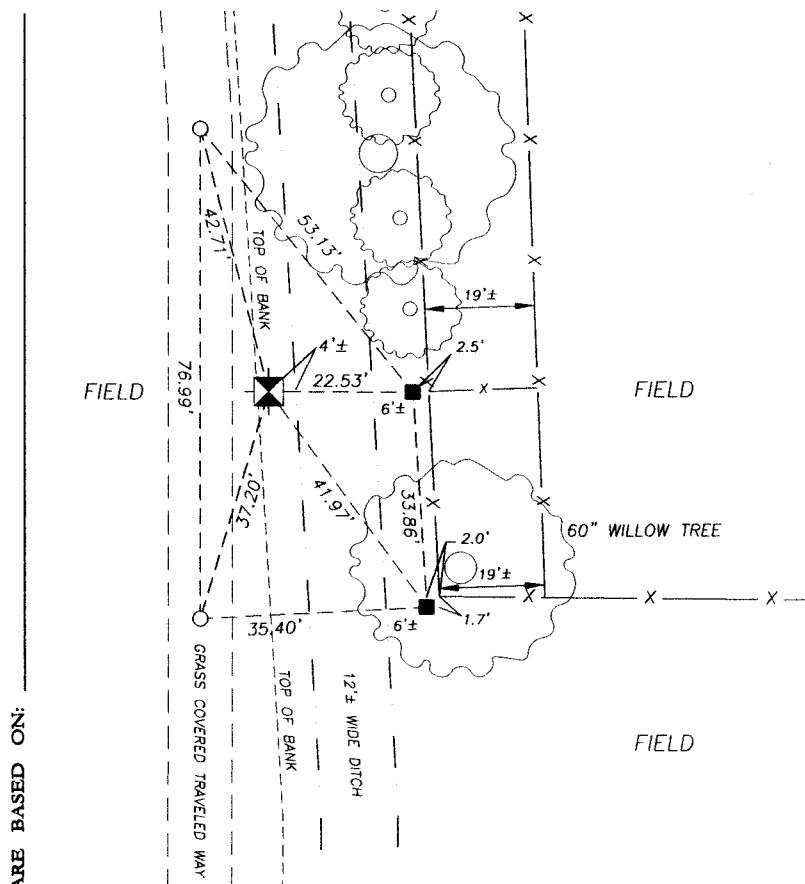
NAD83(91) \_\_\_\_\_ NETWORK ADJ. YR 2010

GPS (X) \_\_\_\_\_ TRAVERSE (X) \_\_\_\_\_

BASED ON THE FOLLOWING CONTROL:

PLACE MONUMENT SYMBOL AT PROPER  
LOCATION ON ABOVE INDEX

(A) ◆ CORNER MONUMENT ○ WITNESS MONUMENT



- BEARINGS ARE BASED ON:
- |     |                                  |
|-----|----------------------------------|
| ○   | 5/8" REBAR SET                   |
| ◆   | 2"x30" IRON PIPE SET             |
| ■   | FOUND 3/4" BOLT W/1" SQUARE HEAD |
| X   | FENCE AND/OR FENCE REMNANTS      |
| --- | APPROXIMATE EDGE OF WATER        |

**WEST 1/4 CORNER  
SECTION 8, T. 03 N., R. 11 E.**

FIELD BOOK 1 PAGE # 62 SHEET 1 OF 1  
SHOW A PLAN VIEW DRAWING DEPICTING THE CORNER MONUMENT AND SURROUNDING  
PHYSICAL FEATURES, INCLUDING THE EXCAVATION AREA AND DEPTH.

CORNER CODE 535CE  
G-5(1)

**(B) Describe any record evidence, monument evidence, occupational evidence, testimonial evidence or any other material evidence you considered, and whether the monument was found or placed.**

I found 2 Witness Corners as shown and noted on previous Tie Sheet. Present field located distances between these Witness Corners agreed with those on record.

Other historical evidence available is the current location of a drainage ditch which the owner stated was supposed to be entirely on his property. Approximately 19 feet of fence remnant runs East in line between the computed East and West 1/4 corners. The occupation fence near the North line of the Southwest 1/4 of Section 8-3-11 lies southerly of this line.

Rock County Coordinates for this location provided by the Rock County Surveyor suggests the monument at this location was observed prior to the relatively recent dredging and enlargement of the drainage ditch.

**(C) Was the corner restored through acceptance of (1) an obliterated evidence location, or, (2) a found perpetuated location?**

Obliterated evidence location.

**(D) Describe any material discrepancy between the location of the corner as restored or reestablished and the location of that corner as previously restored or reestablished by distance and direction. Show the discrepancy on the plan view drawing under (A) above. Show the distances between the corner as previously restored or reestablished and (1) the corner as restored or reestablished, and (2) to at least 4 of the witness monuments shown on the drawing in (A), above.**

I set a 2"x30" iron pipe at the location noted on the previous Tie Sheet, which location agreed with the positional coordinate value for this monument provided by the Rock County Surveyor, as well as 2 additional witness monuments as shown.

**(E) Was the corner reestablished through lost corner proportionate methods? If so, show the method, including the directions and distance to other public land survey corners used as evidence or used for proportioning the corner location.**

No.

I, Steven L. Oftedahl, hereby certify that the corner location as defined by the corner code index was determined by me under my direction and control and that this U.S. Public Land Survey Monument Record is correct and complete to the best of my knowledge and belief.



*Steven L. Oftedahl* 6-21-2011

SHEET 1 OF 1

CORNER CODE 535CE

G-5 (1)