

- Paper weight-110# (minimum)      Black nonfading ink required

# U.S. PUBLIC LAND SURVEY MONUMENT RECORD

For Public Land Survey Corners In:  
 T. 4 N. R. 13 E. 4th P.M.

WI ADMINISTRATIVE CODE A-E 7.08 REQUIREMENT  
 REV 10/23/2004      USMONREC.DWG

CORNER CODE INDEX

MILTON TWP

ROCK COUNTY WI

IF AVAILABLE  
 ROCK COUNTY COORDINATES PREFERRED

A	1	2	3	4	5	6	7	8	9	10	11	12	13	14	15	16	17	18	19	20	21	22	23	24	25	A
B		6																								B
C			5																							C
D				4																						D
E					3																					E
F						2																				F
G							1																			G
H																										H
I																										I
J																										J
K																										K
L																										L
M																										M
N																										N
O																										O
P																										P
Q																										Q
R																										R
S																										S
T																										T
U																										U
V																										V
W																										W
X																										X
Y																										Y
Z																										Z

North 296,791.730 Elev. \_\_\_\_\_

East 511,393.120

Hor. Datum WCCS Vert. Datum \_\_\_\_\_  
 ROCK COUNTY

LATITUDE \_\_\_\_\_ ELLIPS. HT. \_\_\_\_\_

LONGITUDE \_\_\_\_\_

NAD83(91) \_\_\_\_\_ NETWORK ADJ. YR 2010

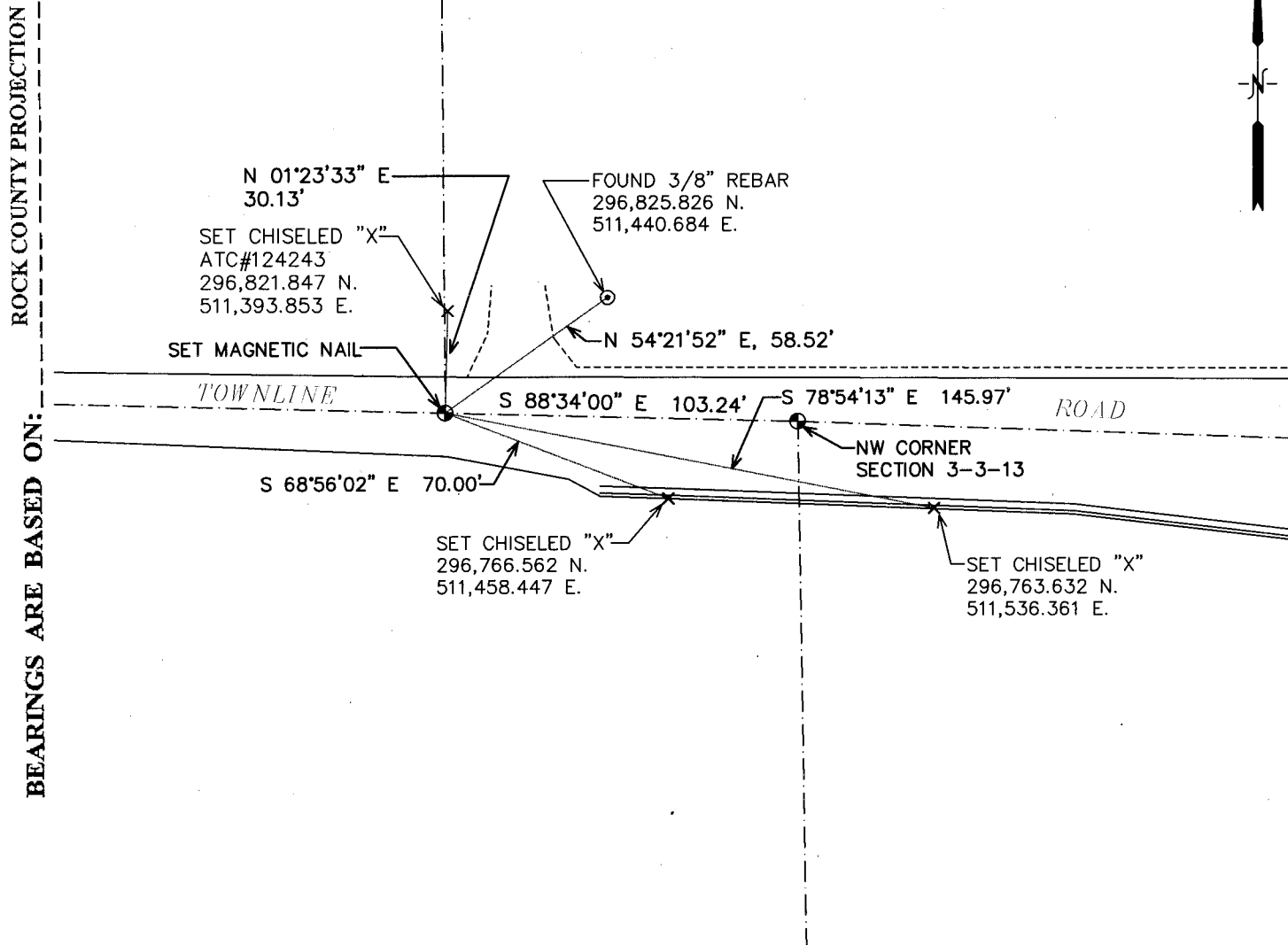
GPS (X) \_\_\_\_\_ TRAVERSE (X) X

BASED ON THE FOLLOWING CONTROL:

1 2 3 4 5 6 7 8 9 10 11 12 13 14 15 16 17 18 19 20 21 22 23 24 25  
 PLACE MONUMENT SYMBOL ■ AT PROPER LOCATION ON ABOVE INDEX

(a)

LOCATION SKETCH:  
 1" = 50'



FIELD BOOK \_\_\_\_\_ PAGE # \_\_\_\_\_  
 OR OBSERVATION SHEET \_\_\_\_\_

SHEET 1 OF 2

SHOW A PLAN VIEW DRAWING DEPICTING THE CORNER MONUMENT AND SURROUNDING PHYSICAL FEATURES, INCLUDING THE EXCAVATION AREA AND DEPTH.

PLANNING & ZONING COMMITTEE ADOPTED THIS FORM ON 12/2/1982

CORNER CODE Z-13(3)

*(B) Describe any record evidence, monument evidence, occupational evidence, testimonial evidence or any other material evidence you considered, and whether the monument was found or placed.*

Following highway reconstruction, set a magnetic nail in the asphalt roadway about thirteen feet north of the edge of pavement of the southerly side of Townline Road, which has been perpetuated from locating a previously existing cut poly monument prior to construction as found by Donald Barnes, Rock County Surveyor, in May of 2012 as marking the location of the corner. Found one chiseled "X" (ATC#124243), found one 3/8 inch rebar, and set two chiseled "X"s in the back of curb as witnesses following highway reconstruction as shown.

*C) Was the corner restored through acceptance of (1) an obliterated evidence location, or, (2) a found perpetuated location?*

Found perpetuated location.

*D) Describe any material discrepancy between the location of the corner as restored or reestablished and the location of that corner as previously restored or reestablished by distance and direction. Show the discrepancy on the plan view drawing under (a), above. Show the distances between the corner as previously restored or reestablished and (1) the corner as restored or reestablished, and (2) to at least 4 of the witness monuments shown on the drawing in (a), above.*

None.

*(E) Was the corner reestablished through lost corner proportionate methods? If so, show the method, including the directions and distances to other public land survey corners used as evidence or used for proportioning the corner location.*

No.

I, Kristin Belongia, RLS, hereby certify that the corner location as identified by the corner code index was determined by me under my direction and control and that this U.S. Public Land Survey Monument Record is correct and complete to the best of my knowledge and belief.

SHEET 2 OF 2

CORNER CODE Z-13(3)

A.E. 7.08 REQUIREMENT



*K. Belongia*  
10/30/13