

U.S. PUBLIC LAND SURVEY MONUMENT RECORD

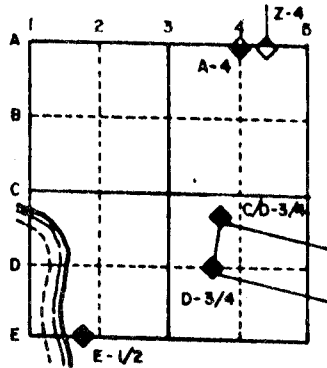
For Public Land Survey Corners in the
T. 1 N., R. 14 E.

CORNER CODE INDEX

	1	2	3	4	5	6	7	8	9	10	11	12	13	14	15	16	17	18	19	20	21	22	23	24	25
A																									
B																									
C		6																							
D			5																						
E				4																					
F					3																				
G						2																			
H																									
I																									
J																									
K																									
L																									
M																									
N																									
O																									
P																									
Q																									
R																									
S																									
T																									
U																									
V																									
W																									
X																									
Y																									
Z																									

PLACE MONUMENT SYMBOL (◆) AT PROPER LOCATION ON ABOVE INDEX

EXAMPLE



CLINTON TWP
ROCK COUNTY WI

IF AVAILABLE
STATE PLANE COORDINATES

North (Y) _____ Eleve. (Z) _____
East (X) _____ Zone _____
Hor. Datum _____ Vert. Datum _____

(a.)

◆ CORNER MONUMENT

○ WITNESS MONUMENT

BEARINGS ARE BASED ON:

MICROFILMED

FIELD BOOK _____ PAGE # _____

SHOW A PLAN VIEW DRAWING DEPICTING THE CORNER MONUMENT AND SURROUNDING PHYSICAL FEATURES, INCLUDING THE EXCAVATION AREA AND DEPTH. THE CORNER MONUMENT SHALL HAVE THE FOLLOWING CHARACTERISTICS: 1) HAVE AT LEAST TWO PREDETERMINED BREAK-OFF POINTS. 2) IF BROKEN, LEAVE A PERMANENTLY MAGNETIZED REMNANT AT THE ORIGINAL POINT. 3) MUST BE EXTENDABLE. 4) THE CAP IS INSCRIBED: ROCK COUNTY SURVEY MONUMENT - PENALTY FOR DISTURBING MARKER. 5) OR AN EXISTING CUT LIMESTONE. AN IRON PIPE 1 1/2" x 4'0" (MINIMUM) MAY BE USED IN AREAS WHERE GROUND WATER IS WITHIN ONE FOOT OF THE SURFACE. IF THE CORNER IS OCCUPIED BY AN IMPROVEMENT (MANHOLE, BURIED CABLE, ETC.) ANY DURABLE, DISTINCT MONUMENT MAY BE USED. CORNERS SHALL BE REFERENCED WITH AT LEAST 4 DURABLE WITNESS MONUMENTS. WITNESS MONUMENTS SHALL BE MADE OF CONCRETE, NATURAL STONE, IRON OR OTHER EQUALLY DURABLE MATERIAL, EXCEPT WOOD. DESCRIBE THE CORNER AND THE WITNESS MONUMENTS.

CORNER CODE:

Z 10

"MONUMENT RECORD"

OF

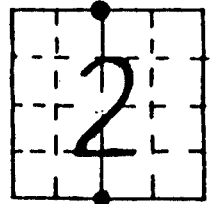
LAND SURVEY MONUMENTS SITUATED IN SECTION 2, TOWNSHIP 46,
RANGE 3, OF THE 3rd PRINCIPAL MERIDIAN, Boone
COUNTY, ILLINOIS.

MONUMENT DESCRIPTION AND REMARKS: Set concrete section corners at
North and South Quarter corners. Concrete reference markers were set in
accordance with Exhibit 1-04-7A and 1-04-7B of the I.D.O.T. land acquisition
policies and procedures.

RECOVERY TIE DRAWING



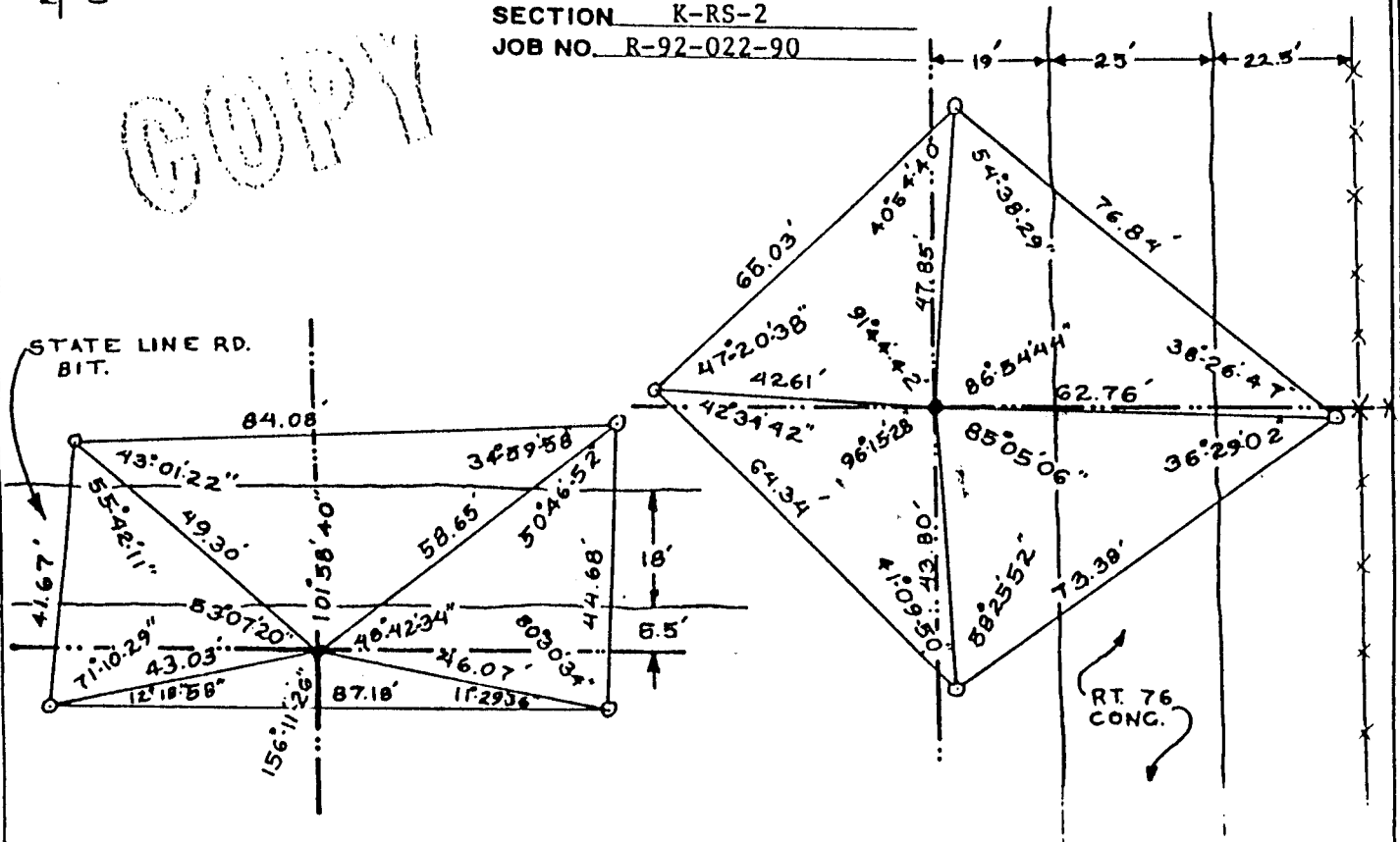
Illinois Department of Transportation
Division of Highways



ROUTE F.A. Route 754
SECTION K-RS-2
JOB NO. R-92-022-90

NORTH
(NOT TO SCALE)

COPY



● DENOTES N 1/4 CORNER
○ DENOTES CONC. REFERENCE MARKER

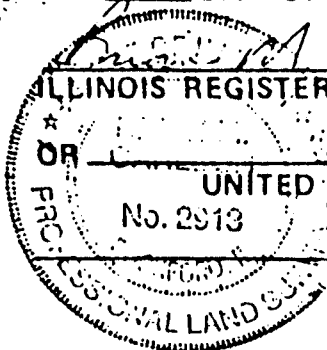
● DENOTES S 1/4 CORNER
○ DENOTES REFERENCE MARKER

STATE OF ILLINOIS
COUNTY OF WINNEBAGO SS

SPACE RESERVED FOR
RECORDING OFFICER
INDEX CODE

I, Brian M. Carlson, HEREBY
CERTIFY THAT THIS DOCUMENT WAS PREPARED
UNDER MY DIRECTION IN ACCORDANCE WITH
THE PUBLIC ACT 79-649 AND THE ABOVE
DATA IS GIVEN UNDER MY HAND AND SEAL
THIS 14th DAY OF August, 19 90 A.D.

Document No. 70-3825
Boone County Illinois
Applied to, forwarded, Recorded
10/33
KS



ILLINOIS REGISTERED LAND SURVEYOR NO. 2913
OR
UNITED STATES GOVERNMENT AGENCY
ARNOLD LUNDGREN & ASSOCIATES, INC.
PROFESSIONAL ENGINEERS
1834 FOURTH AVENUE
ROCKFORD, ILL. 61101
AREA CODE 815
TELEPHONE 999-2001
BY E.F.D. DATE 8-14-90
APPROVED BY B.M.C. ORDER NO. 19408

210