

Paper weight-110# (minimum)

Black nonfading ink required

# U.S. PUBLIC LAND SURVEY MONUMENT RECORD

For Public Land Survey Corners In:  
T. 2 N. R. 11 E. 4th P.M.

WI ADMINISTRATIVE CODE A-E 7.08 REQUIREMENT  
REV 10/23/2004 USMONREC.DWG

CORNER CODE INDEX

PLYMOUTH TWP  
ROCK COUNTY WI

IF AVAILABLE  
ROCK COUNTY COORDINATES PREFERRED

A	1	2	3	4	5	6	7	8	9	10	11	12	13	14	15	16	17	18	19	20	21	22	23	24	25	A
B		6				5				4				3			2			1						B
C																										C
D																										D
E																										E
F																										F
G																										G
H																										H
J																										J
K																										K
L																										L
M																										M
N																										N
O																										O
P																										P
Q																										Q
R																										R
S																										S
T																										T
U																										U
V																										V
W																										W
X																										X
Y																										Y
Z																										Z

North \_\_\_\_\_ Elev. \_\_\_\_\_

East \_\_\_\_\_

Hor. Datum \_\_\_\_\_ Vert. Datum \_\_\_\_\_

LATITUDE \_\_\_\_\_ ELLIPS. HT. \_\_\_\_\_

LONGITUDE \_\_\_\_\_

NAD83(91) \_\_\_\_\_ NETWORK ADJ. YR \_\_\_\_\_

GPS (X) \_\_\_\_\_ TRAVERSE (X) \_\_\_\_\_

BASED ON THE FOLLOWING CONTROL:

PLACE MONUMENT SYMBOL  AT PROPER LOCATION ON ABOVE INDEX

CORNER MONUMENT

WITNESS MONUMENT

(a)

BEARINGS ARE BASED ON: \_\_\_\_\_

FIELD BOOK \_\_\_\_\_ PAGE # \_\_\_\_\_

SHEET 1 OF 6

SHOW A PLAN VIEW DRAWING DEPICTING THE CORNER MONUMENT AND SURROUNDING PHYSICAL FEATURES, INCLUDING THE EXCAVATION AREA AND DEPTH.

PLANNING & ZONING COMMITTEE ADOPTED THIS FORM ON 12/2/1982

CORNER CODE A-25(4)

**PL513      NEGORSEC1**

*(B) Describe any record evidence, monument evidence, occupational evidence, testimonial evidence or any other material evidence you considered, and whether the monument was found or placed.*

- 1833 MULLETT (SEP 11) NORTH ON EAST SIDE SEC 1 T2N R11E**  
429 LEAVE MARSH AND ENTER PRAIRIE  
2640 SET QUARTER SECTION POST IN PRAIRIE AND RAISED A MOUND  
5280 SET POST CORNER TOWNSHIPS 2 & 3 N RANGES 11 & 12 E IN PRAIRIE AND RAISED A MOUND LAND ROLLING PRAIRIE {AND A MOUND LAND ROLLING PRAIRIE FIRST RATE: IN NOTES}.  
SEPT 11TH 1833
- 1833 MULLETT VAR 7-55 WEST ON SOUTH SIDE OF SECTION 36 T3N R11E**  
2640 SET QUARTER SECTION POST IN PRAIRIE AND MADE MOUND  
5280 SET POST CORNER SECTIONS 35 & 36 BUR OAK 10 N70E 411.84' BUR OAK 8 N64 ½ W 557.7' LAND ROLLING SECOND RATE PRAIRIE.  
NORTH ON EAST SIDE OF SECTION 36 VAR 8-40  
2640 SET QUARTER SECTION POST IN PRAIRIE AND MADE A MOUND  
5280 SET POST CORNER SECTIONS 25 & 36 IN PRAIRIE AND MADE A MOUND LAND ROLLING PRAIRIE FIRST RATE. SEPT 14 1833  
EAST ON SOUTH SIDE SECTION 31 VAR 7-50E  
2475 LEAVE PRAIRIE  
2600.4 SET QUARTER SECTION POST BUR OAK 8 NB9E 110.22' BUR OAK 10 N12 ½ W 182.82'  
4290 ENTER MARSH N & S  
4620 STREAM 2.64'? C S.E.  
5240.4 SET POST CORNER SECTIONS 31 & 32 BUR OAK 8 N 7 ½ W 397.32' BUR OAK 6 N6E 491.7' LAND ROLLING SECOND RATE PART PRAIRIE PART TIMBERED BLACK WHITE AND BUR OAK.
- 1833 MULLETT EAST ON SOUTH SIDE SECTION 31 T3N R12E VAR 7-50E**  
2475 LEAVE PRAIRIE  
2600.4 SET QUARTER SECTION POST BUR OAK 8 NB9E 110.22'; BUR OAK 10 N12-30W 182.82'  
4290 STREAM ?? C SE  
5240.4 SET POST CORNER SECTIONS 31 & 32 BURR OAK 8 N7-30W 397.32'; BUR OAK 6 N6E 491.7'. LAND ROLLING SECOND RATE PART PRAIRIE PART TIMBERED BLACK, WHITE, AND BUR OAK.
- 1833 MULLETT T3N R11E VAR 8-40 NORTH ON EAST SIDE SECTION 36**  
2640 SET QUARTER SECTION POST IN PRAIRIE AND MADE A MOUND  
5280 SET POST CORNER SECTIONS 25 & 36 IN PRAIRIE AND MADE A MOUND LAND ROLLING PRAIRIE FIRST RATE.
- 1845 JANESVILLE TWP RD REC BK1 PG 37 NOTES OF A SURVEY OF ROAD LAID OUT BY THE UNDERSIGNED COMMISSIONERS OF HIGHWAYS OF THE TOWNS OF JANESVILLE AND ROCK IN THE COUNTY OF ROCK AND TERRITORY OF WISCONSIN. JANESVILLE AND ROCK AFORESAID TO A POINT 528' DISTANT AND WEST FROM THE CORNER OF SECTIONS 34, 33, 3 & 4 IN SAID TOWNSHIPS; THENCE S79-45E 561' AND OVER SCOVILLE'S CREEK; THENCE N75-30E 303.6' BACK TO THE LINE BETWEEN THE TOWNSHIPS AFORESAID; BEGINNING AT A POINT ON THE LINE BETWEEN RANGES 11 AND 12 EAST WHERE T2 AND 3 NORTH IN R12E CORNER**

*Donald Lawrence*

*10/09/09*

SHEET 1 OF 6  
CORNER CODE A-25(4)

PL513

NECORSEC1

TOGETHER ON SAID LINE; AND RUNNING EAST ON THE LINE BETWEEN SAID TOWNSHIPS AND BETWEEN THE TOWNS OF THENCE EAST ON SAID LINE TO THE WESTERN BOUNDARY OF THE VILLAGE OF ROCKPORT SAID ROAD IS 66' IN WIDTH EXTENDS 33' ON EACH SIDE OF THE LINE DESCRIBED.

1847 STORY JANESVILLE TWP RD REC BK1 PG 83 A SURVEY OF A PUBLIC HIGHWAY MADE THIS 15TH DAY OF MAY. BY ORDER OF THE COMMISSIONERS OF HIGHWAYS OF THE TOWN OF JANESVILLE, BEGINNING AT THE EAST LINE OF SEC 35 AT THE QUARTER POST, T3N R12E FROM THENCE WESTERLY ALONG THE CENTER OF SEC 35 AND 34, 10,560' TO A POST STANDING IN THE EAST LINE OF SEC 33, FROM THENCE WESTERLY ALONG THE CENTER OF 33 AND A PART OF SEC 32, 6411.24' FROM THENCE S56W 6006' TO THE CENTER OF THE HIGHWAY TO A POST STANDING EASTERLY 38.94' FROM THE SW CORNER OF SEC 31 THIS ROAD IS LAID 33' FROM THE RIGHT TO THE LEFT OF THE CENTER.

1847 JANESVILLE TWP RD REC BK1 PG 84 & 96 WE THE UNDERSIGNED COMMISSIONERS OF HIGHWAYS FOR THE TOWNS OF ROCK AND JANESVILLE DID EXAMINE THE GROUND AND LAY OUT A PUBLIC HIGHWAY ON THE LINE BETWEEN T2 AND 3, R12E CALLED THE TOWN LINE ROAD ON THE 15TH DAY OF MAY AGREEABLY TO THE ABOVE DRAFT BEGINNING AT THE EAST CORNERS OF SECTIONS 35 AND 2; THENCE WEST ON THE TOWN LINE TO A STAKE 297' EAST OF THE WEST CORNER OF SECTION 3, THENCE S66W 305.25' TO A STAKE; THENCE S83W 132' TO A STAKE; THENCE N80W 305.25 TO A STAKE ON THE LINE OF SAID TOWN; THENCE ON SAID LINE TO THE WEST CORNER OF T2 AND 3, SAID ROAD TO BE 66' WIDE 33' ON EACH SIDE OF SAID LINE MAKING BY SECTIONS, A DISTANCE OF FIVE MILES AND ON [ONE?] ROD.

1854 McVEAN VOL 1 PG 23 STATES NOTHING ABOUT MON. 2655.84 TO E 1/4 COR SEC 1.

1868 LOCKE PG 33 NORTH ON EAST LINE SEC 1 VAR 6-40  
0 SET OFF 10.56' EAST  
2657.82 INTERSECTED 1/4 LINE 23.1' EAST OF COR. FOUND STONE SET AT END OF SOD FENCE. VAR CORRECTED 6-56 CONTINUED NORTH FROM 1/4 COR WITH VAR 6-40  
5315.64 INTERSECTED NORTH BOUNDARY 20.79' EAST OF COR. FOUND STONE & UNDERNEATH REMAINS OF STAKE. COR. IN CENTER OF HIGHWAY AND NEARLY IN LINE WITH N & S FENCES. VAR CORRECTED 7-07 PG 34 WEST ON NORTH LINE SECTION 1.  
2668.38 INTERSECTED 1/4 LINE FOR TOWN 3 (CENTER) 1.98' SOUTH OF COR. FOUND LARGE LIMESTONE IN CENTER OF HIGHWAY AND IN LINE OF N AND S FENCES.  
5334.12 INTERSECTED WEST BOUNDARY 14.52' SOUTH OF COR. FOUND BT IN SEC 2.  
5330.82 INTERSECTED COR FOR TOWN 3 FOUND BT IN SEC 35 AND STUMP OF BT IN SEC 36. COR IN CENTER OF HIGHWAY.  
2667.06 SET 1/4 COR 1.32' EAST OF 1/4 COR FOR TOWN 3 FOR FIRST HALF MILE VAR CORRECTED 6-58, FOR LAST HALF MILE VAR CORRECTED 7-11 1/4 MONUMENT MARKED WITH FIGURE 1 ON SOUTH FACE  
AUG 27, 1868

*Dwight Barnes*  
10/09/2009

- 1933 SUNNY VOL 3 PG 234 SET 1" IRON PIPE 30" LONG IN CONCRETE PAVEMENT 0.9' NORTH OF CENTER OF PAVEMENT & IN LINE WITH N & S FENCE. SHOWS A DISTANCE OF 2657.8 FROM THE NE COR SEC 1 TO THE EAST QUARTER CORNER OF SEC 1 AND 2667.2 FROM THE NE COR SEC 1 TO THE NORTH QUARTER CORNER OF SEC 1 AND 2629.45 FROM THE NE COR SEC 1 TO THE NORTH QUARTER CORNER OF SECTION 6.
- 1962 SCHIMEALL #5848 PIN @ SW COR SEC 31 IS 0.9' NORTH OF CENTER OF RD.
- 1970 BATTERMAN JR. VOL 4 PG 432 FOUND ¾" IRON PIN AT CORNER 1' NORTH OF CENTER OF PAVEMENT. REFERENCED CORNER.
- 1985 COMBS GMS VOL 12 PG 132 SET PK @ SW COR SEC 31 & S 1/4 COR SEC 31 FROM TIES IN VOL 4 PG 432 OF COUNTY SURVEYORS RECORDS.
- 1987 BARNES Z-1(1) FOUND PK AND 3 OF THE REFERENCE PIPES. PLACED G-1 MONUMENT TO THE NORTHEAST.
- 1988 BARNES A-25 & Z-25 (CENTER TWP. FOUND PIPE 15" DEEP IN OLD CONCRETE PAVEMENT. DUG LARGE HOLE AND FOUND CUT LIMESTONE 2 ½ X 8" 40 INCHES DEEP. BROKE TOP 16 INCHES OFF. PLACED MAGNET ON TOP OF STONE. EXCAVATION AREA INDICATES THAT SUNNY DID NOT DIG FOR THE CORNER. ACCEPTED FOUND CUT LIMESTONE. THE PK, PIPE, AND CUT LIMESTONE ARE NOT AT THE SAME LOCATION. MAP SHOWS DISCREPANCY. TIES & BEARINGS TO FOUND REFERENCE PIPES. USING DOT CONTROL THE COORDINATES FOR THE L.S. ARE N/S 246,136.80; E/W 2,233,919.92 AND THE JANESVILLE TWP PROJECT COORDINATES FOR THE PK IS 246,136.05; 2,233,920.98 AND THE DOT CONTROL COORDINATES FOR THE PK ARE 246,136.27; 2,233,920.18. THE COORDINATES FOR THE 1" PIPE ARE 246,136.22; 2,233,920.13. THE PK IS S25-48-45E 0.59' & THE FD PIPE IS S19-38-25E 0.61' FROM THE CUT L.S.
- 1988 BARNES VOL 6 PG 378 JANESVILLE TWP PROJ. SW TO S 1/4 COR SEC 31 IS N89-37-32E 2619.46 & SW TO W 1/4 COR SEC 31 IS N0-58-54W 2666.94
- 1988 BARNES VOL 6 PG 389 2666.95 TO N ¼ COR SEC 1 & 2668.14 TO S ¼ COR SEC 36.
- 1989 WIDOT PROJ #1704-03-22 MAP #16694 & 16704 CUT LIMESTONE 246,136.80; 2,233,919.92, N0-57-54E 2615.44 TO ALUM MON AT E ¼ COR SEC 36 CENTER TWP (248,802.68; 2,233,875.02, S0-42-30E 2607.55 TO CUT LIMESTONE AT E ¼ COR SEC 1 (243,480.31; 2,233,952.77), N89-38-20E 2619.72 TO 1" IRON PIN AT S ¼ COR SEC 31 T3 R12E
- 1992 BARNES A-25(1) (MAY) MONUMENT WILL BE DESTROYED BY ROAD CONSTRUCTION. DISTANCES & BEARINGS TO OLD REFERENCE PIPES AND NEW DOT REFERENCE MONUMENTS.
- 1992 BARNES A-25(2) & Z-25(1) (NOV) (CENTER TWP) FOUND DOT DISK @ COR & REFERENCE MONUMENTS. ACCEPTED DOT DISK & REFERENCED SAME.
- 1997 BARNES 2668.08 TO S 1/4 COR SEC 36.
- 1999 LATHROP GSM22-323 2688.37 TO S 1/4 COR SEC 36. FD DOT DISK @ S 1/4 COR & SE COR SEC 36. 2668.37 BETWEEN DISKS.
- 2002 COMBS GSM25-318 FD DOT DISKS @ NW COR SEC 6 & S 1/4 COR SEC 31. 2619.0X BETWEEN DISKS.

*Donald Barnes*

*10/09/2009*

PL513 NECORSEC1

- 2003 BARNES A-25(3) USED MY OLD OBSERVATIONS. DID NOT ACCEPT WIDOT DISK. ACCEPTED FOUND CUT LIMESTONE SEE MAP. MAP SHOWS DISCREPANCY BETWEEN FD PK, FD PIPE, CUT LIMESTONE, AND CURRENT WIDOT DISK IN PAVEMENT.
- 2004 LEUNBERGER CSM27-196 2668.37 TO S 1/4 COR SEC 36. @ SE COR SEC 36 FROM S 1/4 COR SEC 36 TO E 1/4 COR SEC 36 THE ANGLE IS 89-16-08 [2009 BARNES 89-16-02]
- 2004 BARNES TOWNSHIP PROJECT DISTANCE FROM S 1/4 COR SEC 36 TO SE COR SEC 36 IS 2668.20 & FROM NW COR SEC 1 TO N 1/4 COR SEC 1 IS NB9-36-35W 2666.96
- 2005 COMBS CSM29-260 FD DOT DISKS @ SW & S 1/4 CORNERS OF SEC 31. 2619.12 BETWEEN DISKS
- 2005 LATHROP #15224 SEC 1
- 2008 COMBS CSM32-179&220 FROM SE COR SEC 36 2662.72 TO S 1/4 COR SEC 36. FD DOT DISKS @ SW & S 1/4 COR SEC 36.

PRIOR TO RESURFACING PROJECT I FD DISK WITH 3/4 OF THE TOP BROKE OFF. 1.5' SOUTH OF CENTER OF PVMT. FD ALL 4 REFERENCE WIDOT DISKS. NB9-36-08W 2668.17 TO S 1/4 COR SEC 36, NB9-36-31W 2666.94 TO N 1/4 COR SEC 1, SO-04-37E 2656.84 TO E 1/4 COR SEC 1,

*C) Was the corner restored through acceptance of (1) an obliterated evidence location, or, (2) a found perpetuated location?*

ACCEPTED CUT LIMESTONE. DID NOT ACCEPT WIDOT'S DISK. LIMESTONE IS IN HARMONY WITH LOCKE'S CALL TO THE CENTER OF THE ROAD & HIS DISTANCES.

I, **Donald Barnes**, hereby certify that the corner location as identified by the corner code index was determined by me under my direction and control and that this U.S. Public Land Survey Monument Record is correct and complete to the best of my knowledge and belief.

*Donald Barnes*  
Seal

Emboss

10/9/2009

SHEET 4 OF 6

CORNER CODE **A-25(4)**

A.E. 7.08 REQUIREMENT

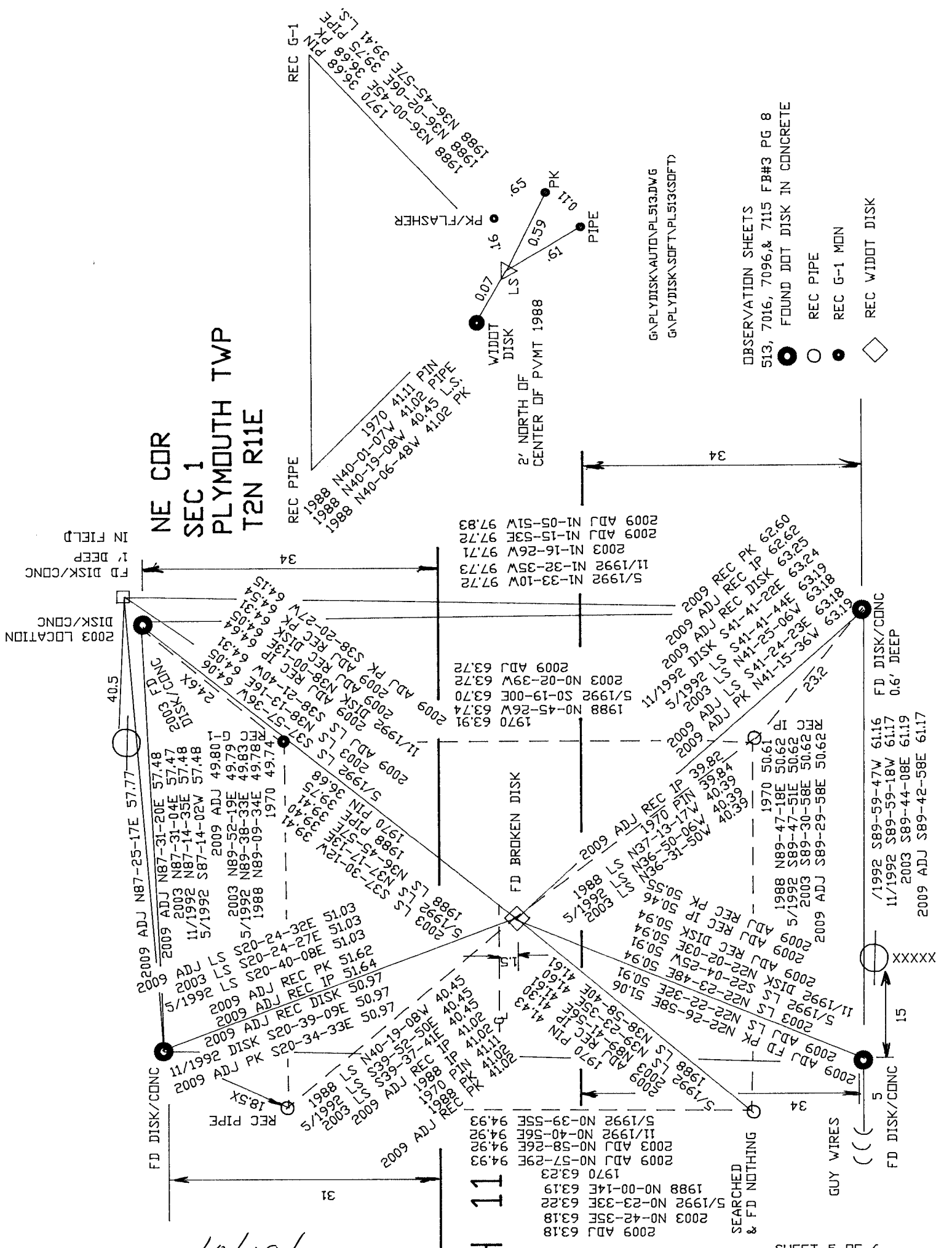
10/09/2009

EMBOSSSED SEAL  
*Donald Barnes*

STH 11

A-25(4)

SHEET 5 OF 6



OBSERVATION SHEETS  
513, 7016, 7096, & 7115 FB#3 PG 8

- FOUND DOT DISK IN CONCRETE
- REC PIPE
- REC G-1 MAIN
- ◇ REC WIDTH DISK

G:\PLYDISK\AUTO\PL513.DWG  
G:\PLYDISK\SOFT\PL513(SOFT)

SEARCHED  
& FD NOTHING

GUY WIRES

XXXXXX

1988 BARNES 6-389 3.28  
 2009 BARNES N89-24-25E 3.28  
 2004 BARNES N89-24-13E 3.28  
 2002 COMBS #15224 S89-56-59E 3.33  
 1997 BARNES S89-24-30W 3.30  
 1992 BARNES A21 3.28  
 1989 WIDOT N88-46-52E 3.29  
 1977 BARNES 5-362 3.3  
 1933 SUNNY 3-235 3.3  
 1868 LOCKE #6828 3.3  
 1868 LOCKE 3.30  
 1833 HARRISON 3.3

1877 RUGER 2616.90  
 1868 LOCKE V7-10 2621.52  
 1933 SUNNY 2621.5  
 1988 BARNES 6-389 2621.72  
 2005 COMBS CSM28-266 2661.95  
 2009 BARNES 50-03-12E 2621.98

2009 BARNES NO-22-45W 2660.58  
 1988 BARNES 6-389 N1-01-11W 2660.68  
 1979 SCHROEDER 2661.58  
 2002 COMBS #14515 2662.44  
 1868 LOCKE 2662.44  
 1989 WIDOT 2662.72  
 1988 BARNES 6-389 2662.72  
 1933 SUNNY 3-234&235 2662.58  
 1833 MULLETT VAR7-55 2640

2009 BARNES NO-28-39W 5329.74  
 2002 COMBS #14515 N1-06-25W 5239.96  
 2009 BARNES #14515 S86-49-30E 1.14  
 2009 BARNES S75-59-08E 1.27  
 2004 BARNES S75-44-38E 1.27  
 1997 BARNES S73-01-51E 1.24  
 1992 BARNES A23 1.19  
 1989 WIDOT INVERSE S73-56-38E 1.24  
 1988 A23 1.16  
 1988 BARNES 1.28  
 1933 SUNNY 3-234 1.32  
 1868 LOCKE 1.32

2009 BARNES S89-18-24E 2662.93  
 2008 COMBS CSM 2662.72  
 2004 BARNES S89-18-28E 2662.85  
 2002 COMBS #14515 N89-51-13W 2652.75  
 1997 BARNES S89-18-19E 2662.64  
 1989 WIDOT INVERSE S89-56-30E 2662.74  
 1989 WIDOT 2662.77  
 1988 BARNES 6-389 S89-56-30E 2662.72  
 1933 SUNNY 3-234&235 2662.58

2009 BARNES S89-36-08E 2668.17  
 2008 COMBS CSM32-179&220 2662.72  
 2004 BARNES S89-36-11E 2668.20  
 2004 LEUNBERGER CSM27-196 2668.37  
 1999 LATHROP CSM22-323 2668.37  
 1997 BARNES S89-36-00E 2668.08  
 1989 WIDOT 2668.17  
 1989 WIDOT INVERSE N89-45-49E 2668.14  
 1988 BARNES 6-389 N89-45-46E 2668.14  
 1933 SUNNY 3-234 2668.52  
 1868 LOCKE 2668.38  
 1833 MULLETT VAR7-55 2640

2009 BARNES 50-04-37E 2655.94  
 1933 SUNNY 2657.84  
 1868 LOCKE VAR 7-07 2657.82  
 1854 MCEVAN VOL1-23 2655.84  
 1833 MULLETT 2640

2009 BARNES 50-04-37E 2655.94  
 1933 SUNNY 2657.84  
 1868 LOCKE VAR 7-07 2657.82  
 1854 MCEVAN VOL1-23 2655.84  
 1833 MULLETT 2640

2009 BARNES 50-04-37E 2655.94  
 1933 SUNNY 2657.84  
 1868 LOCKE VAR 7-07 2657.82  
 1854 MCEVAN VOL1-23 2655.84  
 1833 MULLETT 2640

2009 BARNES 50-04-37E 2655.94  
 1933 SUNNY 2657.84  
 1868 LOCKE VAR 7-07 2657.82  
 1854 MCEVAN VOL1-23 2655.84  
 1833 MULLETT 2640

JANESVILLE  
 TWP

SEC 31

2009 ADJ S89-43-24E 2619.19  
 2005 COMBS CSM29-260 2619.2  
 2002 COMBS CSM25-38 2619.0X  
 1989 DOT N89-30-20E 2619.70  
 1988 BARNES 6-378 N89-37-32E 2619.46  
 1833 MULLETT 2600.4

1933 SUNNY 3-234 2629.45  
 2009 ADJ S89-43-27E 2633.49

SEC 6  
 ROCK TWP

CENTER TWP  
 T3N R11E

36

1868 LOCKE VAR6-58 2667.06  
 1933 SUNNY 3-234 2667.2  
 1988 BARNES 6-389 N89-45-21E 2666.95  
 1989 WIDOT INVERSE N89-45-21E 2666.95  
 2002 COMBS #14515 S89-35-29E 2667.26  
 2004 BARNES S89-36-35E 2666.96  
 2009 BARNES S89-36-31E 2666.94

1868 LOCKE VAR6-58 2667.06  
 1933 SUNNY 3-234 2667.2  
 1988 BARNES 6-389 N89-45-21E 2666.95  
 1989 WIDOT INVERSE N89-45-21E 2666.95  
 2002 COMBS #14515 S89-35-29E 2667.26  
 2004 BARNES S89-36-35E 2666.96  
 2009 BARNES S89-36-31E 2666.94

SEC 1

T2N R11E

CENTER TWP  
 T3N R11E

36

1868 LOCKE VAR7-11 2667.06  
 1933 SUNNY 3-234 2667.2  
 1988 BARNES 6-389 S89-56-08E 26657.20  
 1989 WIDOT INVERSE S89-56-09E 2667.22  
 1997 BARNES S89-17-58E 2667.12  
 2004 BARNES S89-18-11E 2667.37  
 2005 COMBS CSM28-159 2667.18  
 2009 BARNES S89-18-07E 2667.45

1868 LOCKE VAR7-11 2667.06  
 1933 SUNNY 3-234 2667.2  
 1988 BARNES 6-389 S89-56-08E 26657.20  
 1989 WIDOT INVERSE S89-56-09E 2667.22  
 1997 BARNES S89-17-58E 2667.12  
 2004 BARNES S89-18-11E 2667.37  
 2005 COMBS CSM28-159 2667.18  
 2009 BARNES S89-18-07E 2667.45

SEC 1

PLYMOUTH TWP

*Dwight Barnes*

10-09-2009