

U.S. PUBLIC LAND SURVEY MONUMENT RECORD

For Public Land Survey Corners in:

WI ADMINISTRATIVE CODE A-E 7.08 REQUIREMENT

T. 2 N., R. 11 E

CORNER CODE INDEX

PLYMOUTH TWP
ROCK COUNTY WI

IF AVAILABLE
ROCK COUNTY COORDINATES PREFERRED

A	1	2	3	4	5	6	7	8	9	10	11	12	13	14	15	16	17	18	19	20	21	22	23	24	25	
B																										
C	6																									
D		5																								
E			A																							
F				B																						
G	1																									
H		8																								
I			9																							
J				10																						
K					11																					
L	18					16																				
M		17					15																			
N			18					14																		
O				19					13																	
P					20					12																
Q						21					11															
R							22					10														
S								23					9													
T									24					8												
U										25					7											
V											26					6										
W												27					5									
X													28					4								
Y														29					3							
Z															30					2						
																31					1					
																	32									
																		33								
																			34							
																				35						
																					36					

PLACE MONUMENT SYMBOL \blacklozenge AT PROPER LOCATION ON ABOVE INDEX

North _____ Elev. _____

East _____

Hor. Datum _____ Vert. Datum _____

LATITUDE _____ ELLIPS. HT. _____

LONGITUDE _____

GPS (X) _____ TRAVERSE (X) _____

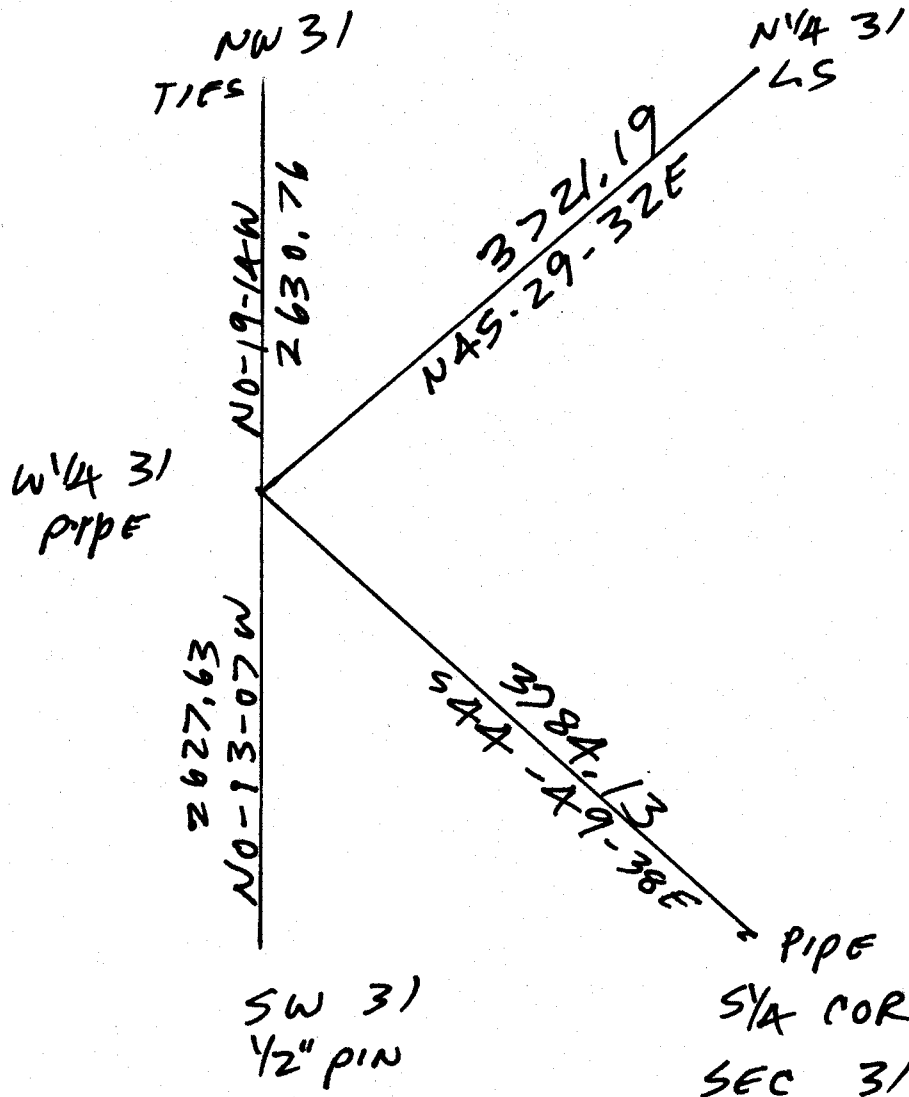
BASED ON THE FOLLOWING CONTROL:

\blacklozenge CORNER MONUMENT

\circ WITNESS MONUMENT

(a)

BEARINGS ARE BASED ON:



OBSERVATION SHEET 780

FIELD BOOK _____ PAGE # _____

SHEET 1 OF 1

SHOW A PLAN VIEW DRAWING DEPICTING THE CORNER MONUMENT AND SURROUNDING PHYSICAL FEATURES, INCLUDING THE EXCAVATION AREA AND DEPTH.

PLANNING & ZONING COMMITTEE ADOPTED THE ABOVE FORM ON 12/2/1982

CORNER CODE X-1(1)

PL614

(B) Describe any record evidence, monument evidence, occupational evidence, testimonial evidence or any other material evidence you considered, and whether the monument was found or placed.

1833 MULLET VAR 8-15E NORTH ON EAST SIDE SECTION 36 T2NR10E
2640 SET QUARTER SECTION POST BUR OAK 14 N73W
36.96'; BUR OAK S57W 35.64'
5280 SET POST CORNER SECTIONS 24 & 36 WHITE OAK 14
S52W 126.06'; BUR OAK 12 N38W 97.68' LAND
ROLLING SECOND RATE THINLY TIMBERED WITH W BUR
& BLK OAK
1868 LOCKE PG 72 SOUTH ON WEST LINE SEC 31 VAR 7-30
1382.7 SMALL BROOK
1521.3 SMALL BROOK
2631.42 INTERSECTED 1/4 LINE 12.87' EAST OF COR.
FOUND B.T.S COR IN CENTER OF ROAD AND 6.6'
NORTH OF E AND W FENCES. VAR CORRECTED 7-
13
SET OFF FROM 1/4 COR .66' WEST AND CONTINUED
SOUTH WITH VAR 7-20
4092 SET OFF 9.57' WEST
5267.79 INTERSECTED SOUTH BOUNDARY 3.96' WEST OF
COR. FOUND NORTH BT AND WHERE SOUTH BT WAS
DUG OUT AND LARGE LIMESTONE ON COR. COR IN
CENTER OF HIGHWAY. VAR CORRECTED 7-13
1937 SUNNY VOL 3 PG 356 FD 6X6 CUT STONE 5' LOW. SET 1 1/2 X 30
CAPPED PIPE ON TOP FLUSH WITH BLACKTOP. REF SAME.
1996 BARNES VOL 6 PG 446 FD PIPE N1-02-588W 2630.78 TO NW COR
SEC 31 & SO-57-07E 2627.62 TO SW COR SEC 31.
1999 TALARCZYK X-1 FD 1 1/2 PIPE SET BY SUNNY. REF SAME. 2.5' WEST
OF CENTER OF PVMT.
1999 TALARCZYK MAP #08048 FD 6" SQUARE STONE.

USED SPRING VALLEY OBSERVATION DATA TO FOUND PIPE

C) Was the corner restored through acceptance of (1) an obliterated evidence location, or, (2) a found perpetuated location?

ACCEPTED FD PIPE, WHICH PERPETUATED THE CUT L.S.

D) Describe any material discrepancy between the location of the corner as restored or reestablished and the location of that corner as previously restored or reestablished by distance and direction. Show the discrepancy on the plan view drawing under (a), above. Show the distances between the corner as previously restored or reestablished and (1) the corner as restored or reestablished, and (2) to at least 4 of the witness monuments shown on the drawing in (a), above.

(E) Was the corner reestablished through lost corner proportionate methods? If so, show the method, including the directions and distances to other public land survey corners used as evidence or used for proportioning the corner location.

I, Donald Barnes, hereby certify that the corner location as identified by the corner code index was determined by me under my direction and control and that this U.S. Public Land Survey Monument Record is correct and complete to the best of my knowledge and belief.

Seal

Donald Barnes
6-17-03
Emboss

SHEET 1 OF 1

CORNER CODE

X-1(1)

A-E 7.08 REQUIREMENT