

U.S. PUBLIC LAND SURVEY MONUMENT RECORD

For Public Land Survey Corners in:

WI ADMINISTRATIVE CODE A-E 7.08 REQUIREMENT

T. 2 N., R. 11 E

CORNER CODE INDEX

A	2	3	4	5	6	7	8	9	10	11	12	13	14	15	16	17	18	19	20	21	22	23	24	25
B	6																							
C		9																						
D																								
E																								
F																								
G	1																							
H		8																						
I																								
J																								
K																								
L	18																							
M		17																						
N																								
O																								
P																								
Q	19																							
R		20																						
S																								
T																								
U																								
V																								
W																								
X																								
Y																								
Z																								

PLYMOUTH TWP

ROCK COUNTY WI

IF AVAILABLE
ROCK COUNTY COORDINATES PREFERRED

North _____ Elev. _____

East _____

Hor. Datum _____ Vert. Datum _____

LATITUDE _____ ELLIPS. HT. _____

LONGITUDE _____

GPS (X) _____ TRAVERSE (X) _____

BASED ON THE FOLLOWING CONTROL:

PLACE MONUMENT SYMBOL AT PROPER LOCATION ON ABOVE INDEX

CORNER MONUMENT

WITNESS MONUMENT

(a)

BEARINGS ARE BASED ON:

FIELD BOOK _____ PAGE # _____

SHEET 1 OF 2

SHOW A PLAN VIEW DRAWING DEPICTING THE CORNER MONUMENT AND SURROUNDING PHYSICAL FEATURES, INCLUDING THE EXCAVATION AREA AND DEPTH.

PLANNING & ZONING COMMITTEE ADOPTED THE ABOVE FORM ON 12/2/1982

CORNER CODE X-17(1)

PL618

(B) Describe any record evidence, monument evidence, occupational evidence, testimonial evidence or any other material evidence you considered, and whether the monument was found or placed.

- 1833 HARRISON NORTH BET 34 & 35
2640 QUARTER SEC COR. BLK O 14 S57W 33'; W.O. 13
N26W 33'; BLK O 14 & W.O. 13 MARKED
4835.16 BUR O 13
5280 COR TO SECS 26, 27, 34, & 35 W.O. 14 S16W
38.94'; BUR OAK 11 S71E 132; BUR OAK 36 N78E
170.94'; BURR OAK 14 N70W 86.46' LAND R?G 2ND
RATE TIMBER BURR, & BLK O. MUCH? GRASS &
WEEDS.
- 1856 CHURCH VOL 1 PG 62 VAR N83-55E 2663.10 TO CEN SEC 35
& 5326.20 TO E ¼ COR SEC 35.
- 1868 LOCKE PG14 SOUTH BETWEEN SECS 34 & 35 VAR 6-55
2650.56 INTERSECTED ¼ LINE AT COR. FOUND NORTH BT AND
STUMP OF SOUTH BT AND OLD STAKE COR IN CENTER
OF HIGHWAY CONTINUED SOUTH FROM ¼ COR WITH
VAR 6-30
4092 SET OFF 15.51' EAST
4290 SET OFF 12.21' EAST
4488 SET OFF 12.41' WEST
4752 SET OFF 14.52' EAST
5016 SET OFF 16.5' EAST
5148 SET OFF 19.8' WEST
5307.72 INTERSECTED SOUTH BOUNDARY 5.28' WEST OF COR
FOUND EAST BT AND STUMP OF WEST BT AND OLD
STAKE VAR CORRECTED 7-08 ½ AUG 20 1868
- 1873 RUGER VOL 2 PG 114 VAR 5-19 2647.48 TO CEN SEC 34, VAR
6-20 2651.85 TO NE COR SEC 34, & VAR 6-21 2650.23 TO SE
COR SEC 34.
- 1873 RUGER VOL 2 PG 116 VAR 5-48 2683.56 TO CEN SEC 35, VAR
5-48 5335.44 TO E ¼ COR SEC 35, VAR 6-21 2650.23 TO SE COR
SEC 34.
- 1874 RUGER VOL 2 PG 122 FD STONE
- 1967 BATTERMAN VOL 4 PG 337 FD 7X7X20 BLUE HH 1.5' DEEP.
REF. SAME.
- 1974 COMBS CSM VOL 3 PG 333 STATES NOTHING ABOUT
MON. WEST 1326.8 TO 1/16TH COR
- 1974 SCHROEDER CSM VOL 4 PG 162
- 1975 SCHROEDER CSM VOL 5 PG 8 STATES NOTHING ABOUT MON.
- 1987 COMBS CSM VOL13 PG 97 FD SMALL PIN
- 1989 COMBS MAP #12293 FD PIN S89-53-15W TO W ¼ COR SEC 34 &
S1-39E TO SE COR SEC 34.
- 1998 KREBS MAP #08079 FD PK 2655.03 TO SE COR SEC 34.
- 1999 HOULE CSM VOL 22 PG 331 HH 2' DEEP NO-20-28E 2654.17
TO PIPE IN MON BOX @ NE COR SEC 34 & SOUTH 2655.07 TO FD
PK @ SE COR SEC 34
- 2002 COMBS X-17 FD BLUE HH. 2' DEEP. REF SAME.
- FD STONE POINT UP 1.9' DEEP. FD 1 REF PIPE & SET 2 RERODS.

C) Was the corner restored through acceptance of (1) an obliterated evidence location, or, (2) a found perpetuated location?

ACCEPTED FD STONE.

I, Donald Barnes, hereby certify that the corner location as identified by the corner code index was determined by me under my direction and control and that this U.S. Public Land Survey Monument Record is correct and complete to the best of my knowledge and belief.

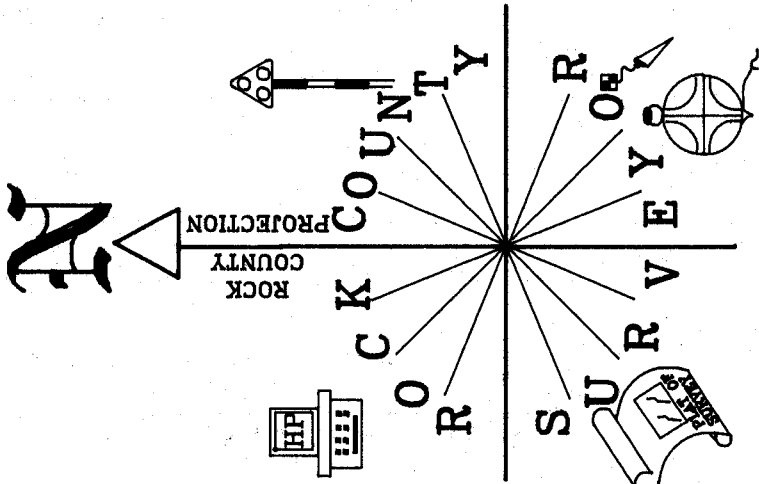
Seal

2/4/03
Emboss
Donald Barnes

SHEET 1 OF 2

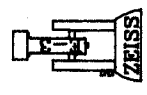
CORNER CODE X-17(1)

A-E 7.08 REQUIREMENT



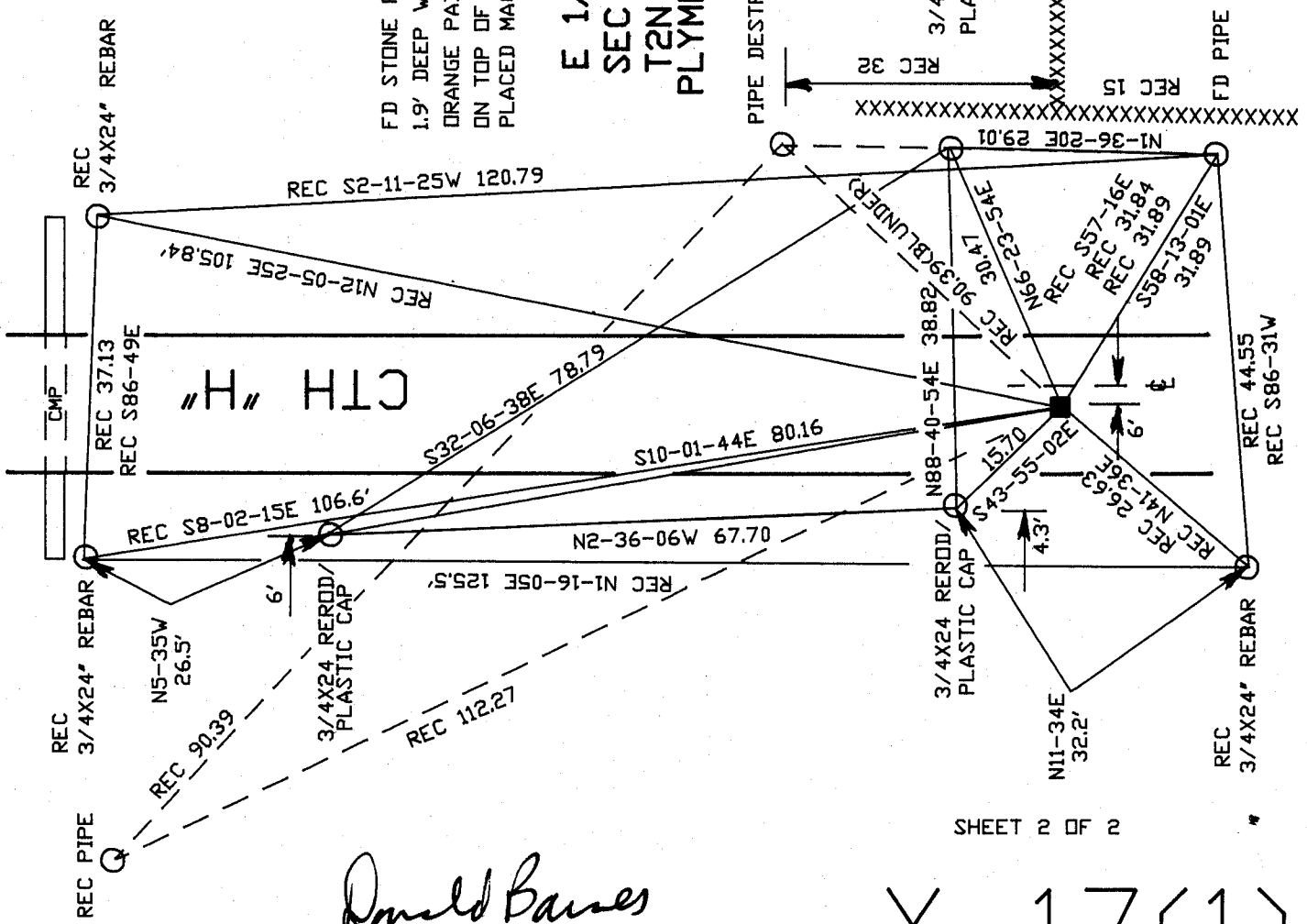
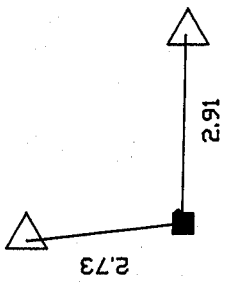
E 1/4 CDR
SEC 34
T2N R11E
PLYMOUTH TWP

FD STONE PT UP
1.9' DEEP WITH
ORANGE PAINT
ON TOP OF STONE
PLACED MAGNETS ON STONE



NOT TO SCALE
OBSERVATION SHEETS 192, 193, & 618
197

MAG. NAIL



CTH "H"

SHEET 2 OF 2

Donald Barnes
EMBOSSSED
SEAL

2-1A-03

X-17(1)