

Paper weight-110# (minimum)

Black nonfading ink required

U.S. PUBLIC LAND SURVEY MONUMENT RECORD

For Public Land Survey Corners In:

WI ADMINISTRATIVE CODE A-E 7.08 REQUIREMENT

T. 2 N. R. 11 E. 4th P.M.

REV 10/23/2004

USMONREC.DWG

CORNER CODE INDEX

PLYMOUTH TWP

ROCK COUNTY WI

IF AVAILABLE

ROCK COUNTY COORDINATES PREFERRED

A	1	2	3	4	5	6	7	8	9	10	11	12	13	14	15	16	17	18	19	20	21	22	23	24	25	A	
B		6				5				4					3					2						1	B
C																											C
D																											D
E																											E
F																											F
G																											G
H																											H
J																											J
K																											K
L																											L
M																											M
N																											N
O																											O
P																											P
Q																											Q
R																											R
S																											S
T																											T
U																											U
V																											V
W																											W
X																											X
Y																											Y
Z																											Z

North _____ Elev. _____

East _____

Hor. Datum _____ Vert. Datum _____

LATITUDE _____ ELLIPS. HT. _____

LONGITUDE _____

NAD83(91) _____ NETWORK ADJ. YR _____

GPS (X) _____ TRAVERSE (X) _____

BASED ON THE FOLLOWING CONTROL:

PLACE MONUMENT SYMBOL AT PROPER LOCATION ON ABOVE INDEX

CORNER MONUMENT

WITNESS MONUMENT

(a)

BEARINGS ARE BASED ON: ROCK COUNTY PROJECTION

FIELD BOOK _____ PAGE # _____

OR OBSERVATION SHEET _____

SHEET 1 OF 1

SHOW A PLAN VIEW DRAWING DEPICTING THE CORNER MONUMENT AND SURROUNDING PHYSICAL FEATURES, INCLUDING THE EXCAVATION AREA AND DEPTH.

PLANNING & ZONING COMMITTEE ADOPTED THIS FORM ON 12/2/1982

CORNER CODE 5-17(1)

SURVEY MAP RECORDED 1/17/2011 IN REGISTER OF DEEDS OFFICE.
 SURVEY SIGNED 4-28-2010 FOR WETLANDS RESERVE PROGRAM
 EASEMENT #66-5F48-10-016 BY RANDY R. ERICKSON S-1897.
 PAGE 2 CLAIMS THE SURVEY IS NOT A SURVEY. PLYMOUTH TWP
 SEC 11

THE FOLLOWING DATA WAS COPIED FROM MAP ON PAGE 1 OF 1.
 GRID NORTH, WISCONSIN STATE PLANE COORDINATES SYSTEM, NAD83
 2007.

RECOVERED ROCK COUNTY MONUMENT OF RECORD

W 1/4 COR SEC 11 238,127.52; 2,191,866.91

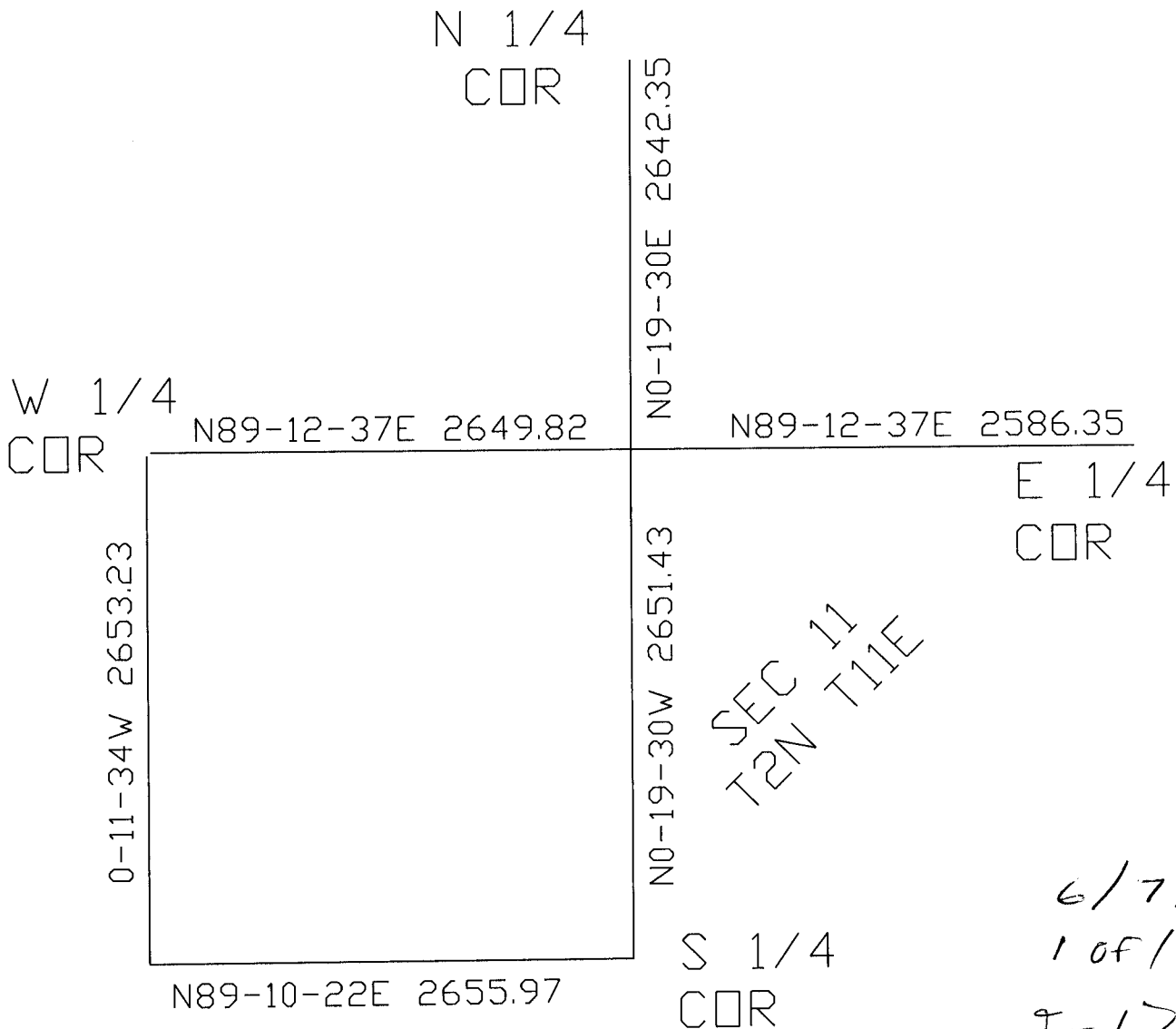
N 1/4 COR SEC 11 240,806.35; 2,194,501.48

E 1/4 COR SEC 11 238,199.69; 2,197,102.58

SW COR SEC 11 235,474.30; 2,191,875.84

S 1/4 COR SEC 11 235,512.65; 2,194,531.53

PLACED 3/4X24 REBAR AT INT OF 1/4 LINES OF SEC 11



6/7/12
 1 OF 1
 J-17