

U.S. PUBLIC LAND SURVEY MONUMENT RECORD

For Public Land Survey Corners in:

WI ADMINISTRATIVE CODE A-E 7.08 REQUIREMENT

T. 2 N., R. 11 E

CORNER CODE INDEX

PLYMOUTH TWP
ROCK COUNTY WI

IF AVAILABLE
ROCK COUNTY COORDINATES PREFERRED

A	2	3	4	5	6	7	8	9	10	11	12	13	14	15	16	17	18	19	20	21	22	23	24	25
B	6																							
C																								
D																								
E																								
F																								
G	1	8	9	10	11	12																		
H																								
I																								
J																								
K																								
L	13	14	15	16	17	18																		
M																								
N																								
O																								
P	19	20	21	22	23	24																		
Q																								
R																								
S																								
T																								
U																								
V																								
W																								
X																								
Y																								
Z																								

North _____ Elev. _____

East _____

Hor. Datum _____ Vert. Datum _____

LATITUDE _____ ELLIPS. HT. _____

LONGITUDE _____

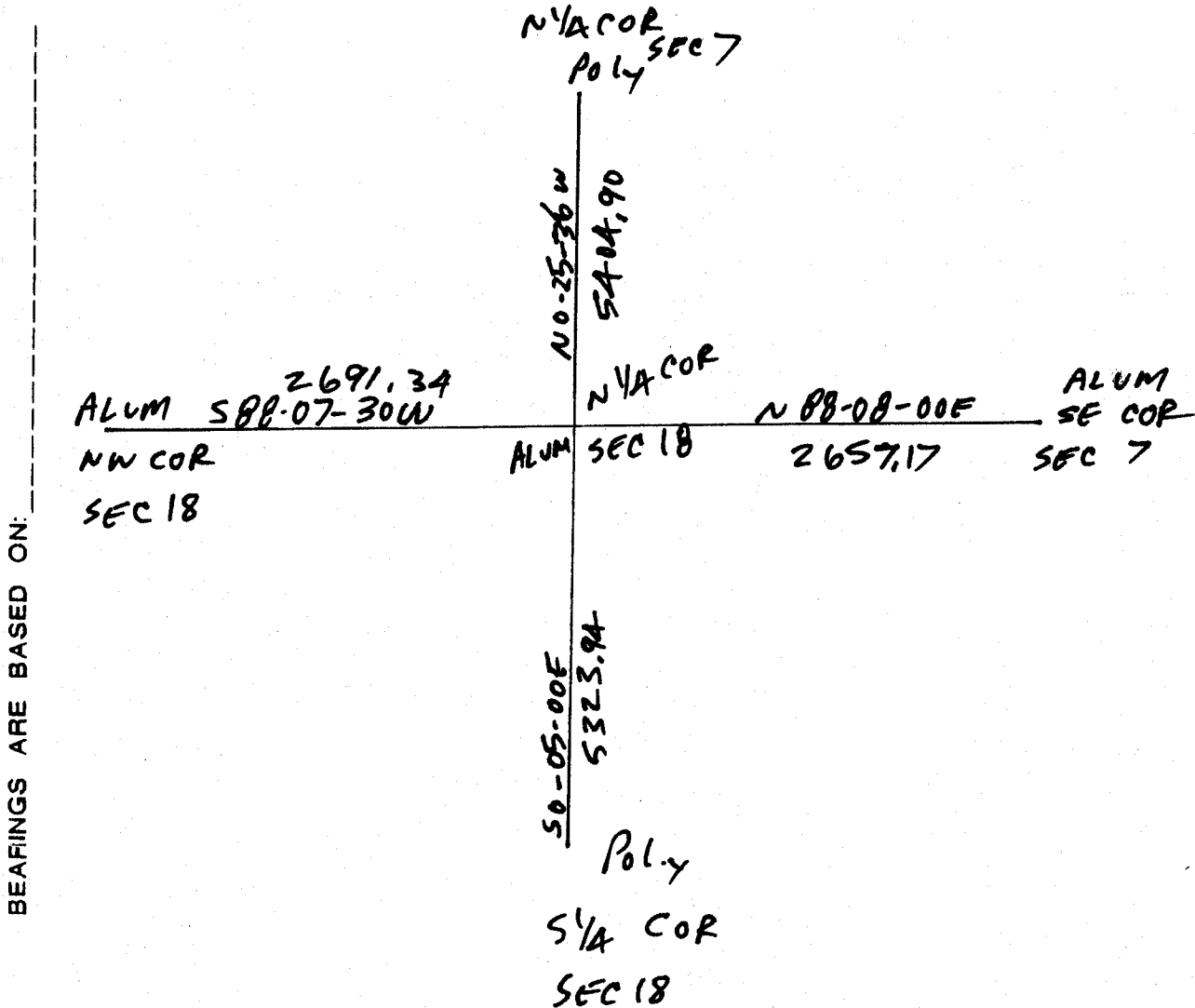
GPS (X) _____ TRAVERSE (X) _____

BASED ON THE FOLLOWING CONTROL:

PLACE MONUMENT SYMBOL \blacklozenge AT PROPER LOCATION ON ABOVE INDEX

\blacklozenge CORNER MONUMENT \circ WITNESS MONUMENT

(a)



OBSERVATION SHEET 3, 13, 31, 259, 265
SA3, 904

FIELD BOOK _____ PAGE # _____ SHEET 1 OF 1

SHOW A PLAN VIEW DRAWING DEPICTING THE CORNER MONUMENT AND SURROUNDING PHYSICAL FEATURES, INCLUDING THE EXCAVATION AREA AND DEPTH.

PLANNING & ZONING COMMITTEE ADOPTED THE ABOVE FORM ON 12/2/1982

CORNER CODE J-3(1)

PL542

(B) Describe any record evidence, monument evidence, occupational evidence, testimonial evidence or any other material evidence you considered, and whether the monument was found or placed.

- 1833 HARRISON WEST ON RAND. BET 7 & 18
2640 TEMPY 1/4 P
5314.98 INT. W. BDY 148.5' N OF P. LAND WET & LEVEL 3RD
RATE MARSH
COR EAST
2674.98 QUARTER SEC COR. POST & SMALL MOUND OF
TUSSUCKS
5314.98 SEC COR
- 1857 CHURCH VOL 1 PG 66 VAR 7 2687.52 TO SW COR SEC 7, VAR
7 2659.80 TO SE COR SEC 7, VAR 7-45 2637.36 TO CENTER
SEC 7, & VAR 7-45 5274.72 TO N 1/4 COR SEC 7.
- 1857 CHURCH VOL 1 PG 67 & MAP #3527 STAKE & STONE IN
MARSH. VAR 7 1/2 2704.68 TO CENTER SEC 18 & 5409.36 TO
S 1/4 COR SEC 18.
- 1868 LOCKE PG 82 EAST BETWEEN SECS 7 AND 18 VAR 7-52
2640 SET TEMPORARY 1/4 COR
5345.34 INTERSECTED EAST BOUNDARY 86.46' SOUTH OF
COR. COR LOST SEE PAGE 77 VAR CORRECTED 8-48
2690.16 SET 1/4 COR 50.16' EAST AND 43.23' NORTH OF
TEMPORARY COR. SURROUNDED MONUMENT BY
PLANK PILES. SEP 16 1868
- 1868 LEE VOL 1 PG 335 & MAP #3526 FD FLAG POLE SET AT COR
BY LOCKE IN PLYMOUTH SURVEY ALSO FD (CHUCKS) SET BY
HIM. VAR 6-30 2638.02 TO CENTER SEC 18 & 5327.52 TO S 1/4
COR SEC 18.
- 1869 RUGER VOL 2 PG 9 STONE MON. SET BY LOCKE VAR 8-40
2687.52 TO SW COR SEC 7, VAR 8-40 2657.16 TO SE COR
SEC 7, VAR 6-14 2645.94 TO CENTER SEC 7, & VAR 6-14
5404.74 TO N 1/4 COR SEC 7.
- 1914 KERCH VOL 5 PG 578 FB K6 PG 80 FD MON.
- 1979 BARNES VOL 5 PG 561 2643.69 TO CENTER SEC 18 & 5323.6
TO S 1/4 SEC 18.
- 1979 BARNES VOL 6 PG 1 NB6-01-35W 2691.22 TO SW COR SEC 7
& SB6-01-35E 2657.23 TO SE COR SEC 7
- 1979 BARNES VOL 6 PG 7 DUG & FD NOTHING. THE COR. WAS
PROBABLY DESTROYED BY DITCHING. SET ALUM. MON. ON
LINE WITH THE NW & NE CORNERS & SINGLE PROPORTIONATE
MEASUREMENT WITH LOCK'S DISTANCES. NORTH OF E/W
DRAINAGE DITCH & WEST OF N/S DRAINAGE DITCH.
- 1989 BARNES VOL 6 PG 402 REC DISTANCES. 5405.54 TO N 1/4 COR
SEC 7.

C) Was the corner restored through acceptance of (1) an obliterated evidence location, or, (2) a found perpetuated location?

USED MY OLD OBSERVATIONS. ACCEPTED ALUM. MON.

I, Donald Barnes, hereby certify that the corner location as identified by the corner code index was determined by me under my direction and control and that this U.S. Public Land Survey Monument Record is correct and complete to the best of my knowledge and belief.

Seal

Donald Barnes

Emboss

May 17, 2003

SHEET 1 OF 1

CORNER CODE

J-3(1)

A.E. 7.08 REQUIREMENT