

U.S. PUBLIC LAND SURVEY MONUMENT RECORD

For Public Land Survey Corners In:

WI ADMINISTRATIVE CODE A-E 7.08 REQUIREMENT

T. 2 N. R. 11 E.

CORNER CODE INDEX

PLYMOUTH TWP

ROCK COUNTY WI

IF AVAILABLE

ROCK COUNTY COORDINATES PREFERRED

1	2	3	4	5	6	7	8	9	10	11	12	13	14	15	16	17	18	19	20	21	22	23	24	25	
A																									A
B																									B
C	6																								C
D																									D
E																									E
F																									F
G	7																								G
H																									H
I																									I
J																									J
K	18																								K
L																									L
M																									M
N																									N
O																									O
P	19																								P
Q																									Q
R																									R
S																									S
T	30																								T
U																									U
V																									V
W																									W
X	31																								X
Y																									Y
Z																									Z

North _____ Elev. _____

East _____

Hor. Datum _____ Vert. Datum _____

LATITUDE _____ ELLIPS. HT. _____

LONGITUDE _____

GPS (X) _____ TRAVERSE (X) _____

BASED ON THE FOLLOWING CONTROL:

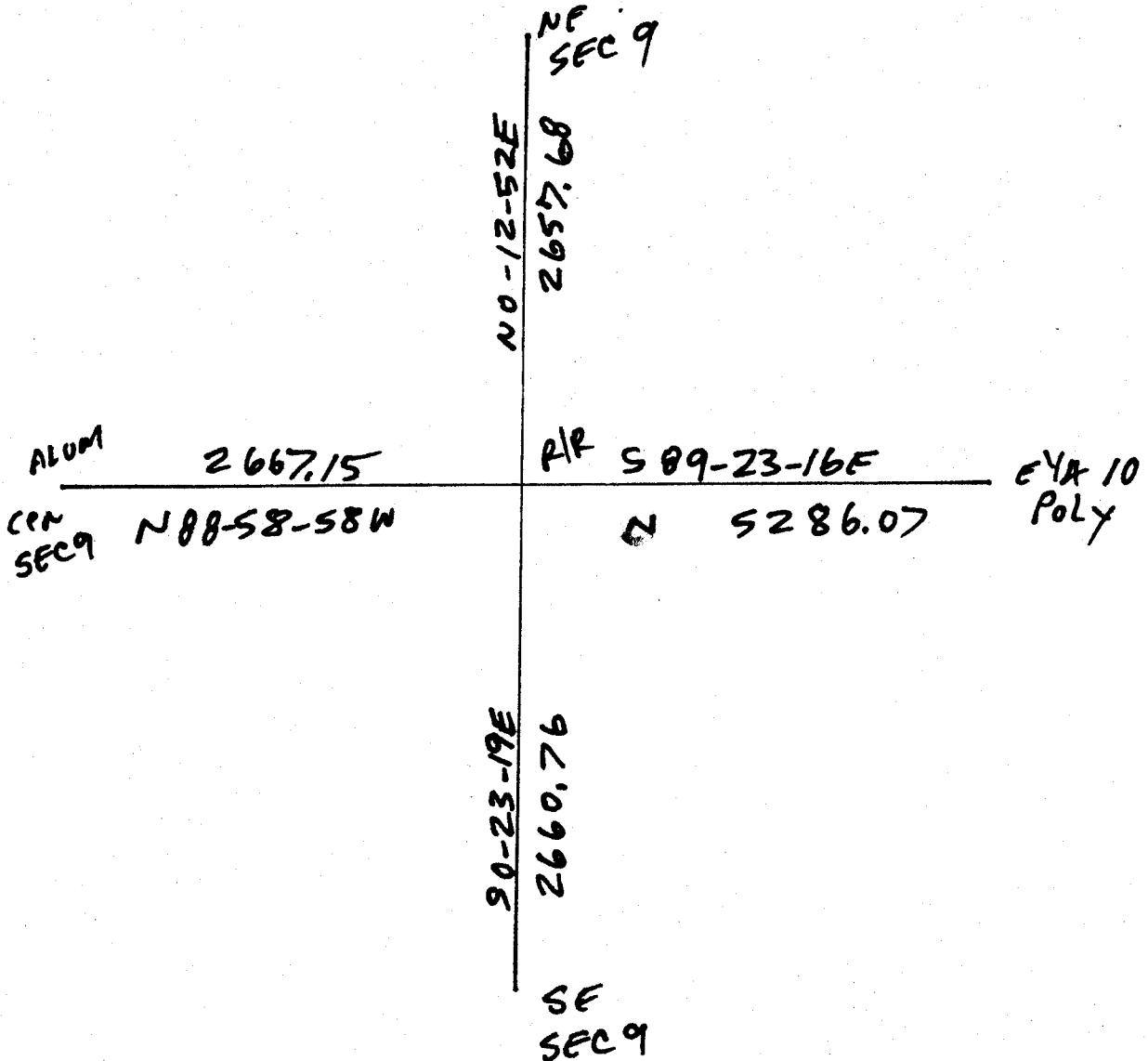
1 2 3 4 5 6 7 8 9 10 11 12 13 14 15 16 17 18 19 20 21 22 23 24 25
PLACE MONUMENT SYMBOL AT PROPER LOCATION ON ABOVE INDEX

CORNER MONUMENT

WITNESS MONUMENT

(a)

BEARINGS ARE BASED ON:



OBSERVATION SHEET 282 P 702

FIELD BOOK _____ PAGE # _____

SHEET 2 OF 2

SHOW A PLAN VIEW DRAWING DEPICTING THE CORNER MONUMENT AND SURROUNDING PHYSICAL FEATURES, INCLUDING THE EXCAVATION AREA AND DEPTH.

PLANNING & ZONING COMMITTEE ADOPTED THE ABOVE FORM ON 12/2/1982

CORNER CODE 6-13(D)

PL537

(B) Describe any record evidence, monument evidence, occupational evidence, testimonial evidence or any other material evidence you considered, and whether the monument was found or placed.

- 1833 HARRISON PG 23 NORTH BETWEEN 9 & 10
1226.94 BURR O 14
2640 QUARTER SEC COR. {BURR O 16 N31E 34.32'
BURR O 14 S67W 7.26' BURR O 16 BURR O
14} MARKED
3300 LEFT TIMBER & ENTER MARSH
3778.5 BROOK 16.5' CR6 S.E.
5280 COR TO SECS 3 4 9 10 IN MARSH SET POST &
RAISED MOUND. LAND LEVEL & WET FOR LAST 1/2
MILE. ROLLING 2ND RATE FOR THE 6 1/2 TIMBER
BURR O.
1847 TWP RD REC BK 1 PG 21 BEGINNING AT THE NW COR OF SEC
3 AND 4, 9 AND 10, 15 AND 16, 21 AND 22 TO THE SW COR
OF SEC 22. SAID RD IS 66' IN WIDTH
1855 CHURCH VOL 1 PG 40 W.O 24 S63W 178.2', BUR O 20 S85E
107.58', 2630.76 TO CENTER 10, & 5261.52 TO E 1/4 COR
SEC 10. STATES NOTHING ABOUT MONUMENT.
1862 CHURCH TWP RD REC BK 1 PG 43 COMMENCING AT THE SEC
COR BETWEEN SEC 9 & 10 ON THE NORTH LINE OF SAID
SECTIONS AND RUNNING THENCE SOUTH ON SEC LINE TO
SOUTH LINE OF SAID SEC; THENCE WEST ON SEC LINE TO
THE SW COR OF SEC 8.
1864 LOCKE VOL 1 PG 199 FD N.B. TREE & LIMESTONE SET BY
CHURCH (PROBABLY) VAR 6-15 2636.7 TO CENTER SEC 10,
5273.4 TO E 1/4 COR SEC 10, VAR 6-45 2650.56 TO SW COR
SEC 10.
1866 LOCKE VOL 1 PG 278 FD CORNER SET BY CHURCH SEC 10.
2651.88 TO NE COR SEC 9, 2666.90 TO CENTER SEC 9, &
5333.79 TO W 1/4 COR SEC 9.
1868 LOCKE VOL 1 PG 320 FD LIMESTONE SET BY CHURCH VAR 6-
50 2650.56 TO SE COR SEC 9, 2654.52 TO NE COR SEC 9,
VAR 5-35 2671.02 TO CENTER SEC 9, & VAR 6-15 2671.02
FROM CENTER SEC 9 TO W 1/4 COR SEC 9.
1868 LOCKE MAP#4335 VAR 6-50 2650.56 TO SE COR SEC 9, VAR
5-35 2670.62 TO GEN SEC 9. FD L.S. SET BY CHURCH
1868 LOCKE PG 45 NORTH BETWEEN SECS 9 & 10 VAR 6-55
2661.12 INTERSECTED 1/4 LINE AT COR. FOUND STUMPS OF
BTS AND STONE SET BY CHURCH (SEE CO. S.
RECORD) ALSO BTS TAKEN BY CHURCH. COR
0.66' SW OF POST IN FENCE
CONTINUED NORTH WITH VAR 6-20
3286.8 ENTER MARSH
3785.1 CENTER OF BRIDGE OVER BASS CREEK 21.12'
WIDE
5041.74 CENTER RR TRACK
5318.28 INTERSECTED NORTH BOUNDARY AT COR. FOUND
COR. AS SET BY SELF. SEE CO. SURVEYORS
RECORD SEC 4. COR IN CENTER OF HIGHWAY.
SEPT 3 1868
1868 LOCKE MAP #4333 2651.88 TO NE COR SEC 9, 2666.90 TO
GEN SEC 9 & 5333.8 TO W 1/4 COR SEC 9
1869 TWP RD REC BK 2 PG 6 BEGINNING AT THE 1/4 ON THE EAST
LINE OF SEC 9; THENCE RUNNING WEST ON THE 1/4 LINE TO
THE 1/4 POST ON THE WEST LINE OF SAID SEC 9; THENCE
WEST ON THE 1/4 LINE OF SEC 8 TO THE CENTER OF SAID SEC
8 TO INTERSECT A RD RUNNING NORTH & SOUTH ON THE
SAID SEC 8, AND THE SAME IS HEREBY ESTABLISHED 66' IN
WIDTH.
1871 RUBER VOL 2 PG 60 FD STONE MON. 2660.13 TO SW COR
SEC 10, VAR 6-10 2656.06 TO NW COR SEC 10, & VAR 4-57
2634.72' FROM CENTER SEC 10 TO E 1/4 COR SEC 10.
1871 RUBER VOL 2 PG 81. 2642.64 TO CENTER SEC 10.
1960 BATTERMAN VOL 4 PG 74 FD OUT LIMESTONE. REFERENCED
SAME.

Donald Barnes

May 12 2003

SHEET 1 OF 2 CORNER CODE G-13(1)

PL537

1974 LEE VOL 5 PG 11 STATES NOTHING ABOUT MON. 2666.85
TO CENTER SEC 9.

1974 LEE DSM VOL 4 PG 23 FD OUT STONE.

1974 LEE DSM 4-23 OUT LIMESTONE.

1976 COMBS DSM 6-87 OUT LIMESTONE

1978 BARNES VOL 5 PG 501 REQ. DISTANCES.

1980 COMBS DSM 10-492 OUT LIMESTONE 2667.04 TO CENTER
OF SEC 9 A ALUM

1980 COMBS MAP #4336 OUT STONE & ALUM AT QEN SEC 9

1988 BARNES VOL 6 PG 386 & 388 N2-25-20W 2657.70 TO NE
COR
SEC 9.

1990 COMBS MAP #1605 & 2224 STONE MON.

1995 LATHROP DSM 19-04 NAIL 2666.98 TO CENTER OF SEC 9 A
ALUM MON.

1999 COMBS G-13 USED FD PIPES OF DSM, VOL 6 PG 87 AND 88
TO SET CORNER BACK. DSM HAD FD STONE SHOWN AT SEC
COR. REFERENCED SAME. 2667.15 TO CENTER OF SEC 9.
SET R/R SPIKE

1999 COMBS DSM VOL 22 PG 222 SET R/R 2657.60 TO NE COR
SEC 9 A PK

FD R/R SPIKE AS SET BY COMBS IN 1999

C) Was the corner restored through acceptance of (1) an obliterated evidence location, or, (2) a found perpetuated location?

ACCEPTED FD R/R SPIKE AS PERPETUATING OUT L.S.

D) Describe any material discrepancy between the location of the corner as restored or reestablished and the location of that corner as previously restored or reestablished by distance and direction. Show the discrepancy on the plan view drawing under (a), above. Show the distances between the corner as previously restored or reestablished and (1) the corner as restored or reestablished, and (2) to at least 4 of the witness monuments shown on the drawing in (a), above.

(E) Was the corner reestablished through lost corner proportionate methods? If so, show the method, including the directions and distances to other public land survey corners used as evidence or used for proportioning the corner location.

I, Donald Barnes, hereby certify that the corner location as identified by the corner code index was determined by me under my direction and control and that this U.S. Public Land Survey Monument Record is correct and complete to the best of my knowledge and belief.

Seal

Donald Barnes
Embloss

May 12, 2003

SHEET 2 OF 2

CORNER CODE

A.E. 7.08 REQUIREMENT

G-13(1)