

U.S. PUBLIC LAND SURVEY MONUMENT RECORD

For Public Land Survey Corners in:

WI ADMINISTRATIVE CODE A-E 7.08 REQUIREMENT

T. 2 N., R. 11 E

CORNER CODE INDEX

A	2	3	4	5	6	7	8	9	10	11	12	13	14	15	16	17	18	19	20	21	22	23	24	25
B	6																							
C		5																						
D																								
E																								
F																								
G	1																							
H		8																						
I																								
J																								
K																								
L	18																							
M		17																						
N																								
O																								
P																								
Q	19																							
R		20																						
S																								
T																								
U	30																							
V		29																						
W																								
X																								
Y	31																							
Z		32																						

PLYMOUTH TWP
ROCK COUNTY WI

IF AVAILABLE
ROCK COUNTY COORDINATES PREFERRED

North _____ Elev. _____

East _____

Hor. Datum _____ Vert. Datum _____

LATITUDE _____ ELLIPS. HT. _____

LONGITUDE _____

GPS (X) _____ TRAVERSE (X) _____

BASED ON THE FOLLOWING CONTROL:

PLACE MONUMENT SYMBOL AT PROPER LOCATION ON ABOVE INDEX

CORNER MONUMENT

WITNESS MONUMENT

(a)

BEARINGS ARE BASED ON:

FIELD BOOK _____ PAGE # _____

SHEET 1 OF 3

SHOW A PLAN VIEW DRAWING DEPICTING THE CORNER MONUMENT AND SURROUNDING PHYSICAL FEATURES, INCLUDING THE EXCAVATION AREA AND DEPTH.

PLANNING & ZONING COMMITTEE ADOPTED THE ABOVE FORM ON 12/2/1982

CORNER CODE N-19(1)

PL570

(B) Describe any record evidence, monument evidence, occupational evidence, testimonial evidence or any other material evidence you considered, and whether the monument was found or placed.

- 1833 HARRISON EAST BETWEEN SECS 14 & 23
2640 TEMPY 1/4 SEC COR
3432 LEFT TIMBER & ENTER MARSH
5293.86 INT. E BDY 9.9' S OF P LAND ROLLING 2ND RATE TIM
BURR & BLK O GRASS & WEEDS
COR WEST
2649.93 QUARTER SEC COR {BLK O 24 S24W 15.18' BLK 10
S44E 18.48' BLK O 24 BLK O 10} MARKED
5293.86 SEC COR
- 1856 CHURCH VOL 1 PG 64 FOUND STUMPS CORRESPONDING WITH
FIELD NOTES. MOSTLY DECAYED. TOOK NEW TREES: BL. OAK
SB 1/2 E 80 LINKS (52.8'), WHITE OAK N88W 111 (73.26').
2655.84 TO SW COR SEC 14, 2640 TO SE COR SEC 14, VAR 7 1/2
2673.99 TO CENTER SEC 14, & VAR 7 1/2 5347.98 TO N 1/4 COR
SEC 14. VAR 7-10 2640 FROM THE CENTER OF SEC 14 TO THE
W 1/4 & E 1/4 CORNERS SEC 14 & VAR 7-1/2 FROM CENTER OF SEC
14 TO N 1/4 COR SEC 14.
- 1868 LOCKE PG 24 EAST BETWEEN SECS 14 & 23 VAR 6-40
1980 SET OFF 15.18' SOUTH
2659.8 INTERSECTED 1/4 LINE 2.97' SOUTH OF COR. FOUND
STUMPS OF BTS AND OLD STAKE VAR CORRECTED 6-
16 COR 4 FT N AND 1 FT WEST OF COR OF BOARD
FENCES RUNNING N & E
CONTINUED EAST FROM 1/4 COR WITH VAR 6-15
5317.62 INTERSECTED EAST BOUNDARY 1.32' NORTH OF COR.
FOUND EAST BT AND STUMP OF WEST BT AND STAKE.
1070.85' TO EAST B.T. AND 1075.8' TO WEST BT COR
IN FENCE (N&S) VAR CORRECTED 6-14 DROVE
STAKES AT SIDES OF MONUMENT AND MADE A
MOUND OF TUSSECKS AROUND. AUG 24 1868
- 1869 LEE VOL 2 PG 2 FD MON. VAR 7 2653.20 TO CENTER OF SEC
14 & VAR 7 2652.54 FROM CENTER SEC 14 TO N 1/4 COR SEC 14.
- 1869 RUGER MAP #4351 STONE MON SET BY LOCKE. 2645.28 TO
CEN SEC 14, 5297.82 TO N 1/4 COR SEC 14.
- 1870 RUGER VOL 2 PG 47 & MAP#6827 STONE MON. BY LOCKE.
VAR 6-39 2654.85 TO SW COR SEC 14, VAR 6-10 2655.68 TO
SE COR SEC 14, VAR 6-46 2663.76 TO CENTER SEC 23, & VAR
6-46 2649.90 TO S 1/4 COR SEC 23.
- 1873 TOWNSHIP ROAD RECORDS BK 2 PG 7 BEGINNING AT THE 1/4
SEC POST IN THE SOUTH LINE OF SEC 23 T2, R11 AND
RUNNING NORTH ON THE 1/4 SEC LINE (VAR 6) TO A PT 174.9'
SOUTH OF THE CENTER OF SAID SEC, THENCE EAST 316.8',
THENCE N42E 348.48', THENCE N10E 1108.8', THENCE N43E
151.8'; THENCE N26W 1402.5', TO THE NORTH LINE OF SEC
23, THENCE N27 3/4 W 528' TO A POINT 33' EAST OF 1/4 SEC 14,
THENCE NORTH PARALLEL WITH 1/4 SEC LINE 1828.2' TO THE 1/4
SEC LINE RUNNING EAST AND WEST IN S 1/2 OF SEC 14; THENCE
WEST ON 1/16 SEC LINE 33' TO THE 1/4 SEC LINE; THENCE
NORTH ON THE 1/4 SEC LINE, TO THE CENTER OF SEC 14, THE
SAME BEING AN ACCURATE SURVEY THEREOF CAUSED BY US TO
BE MADE, THE LINE OF SAID SURVEY IS THE CENTER OF SAID
HWY, AND THE SAME LAID OUT ?????.
- 1874 RUGER VOL 2 PG 138 FD STONE MON.
- 1950 SUNNY MAP #4354 FD CUT STONE.
- 1966 BATTERMAN VOL 4 PG 290 IRON ROD WITH HEXHEAD.
REFERENCED SAME.
- 1982 BARNES VOL 6 PG 282 THE FOLLOWING BEARINGS &
DISTANCES ARE FROM THE S 1/4 COR SEC 14:
N89-57-23E 2657.30 TO SE COR SEC 14
S0-32-26E 1331.57 TO 1/16TH COR
S89-38-24W 1332.51 TO 1/16TH COR
N0-39-39W 2650.42 TO CENTER OF SEC 14

SHEET 1 OF 3 CORNER CODE N-19 (1)

Dodd Barnes
May 10 2003

PL570

THE FOLLOWING ARE FROM THE CENTER OF SEC 14:

S89-49-47E 2658.20 TO E 1/4 COR SEC 14
2562.05 TO N 1/4 COR SEC 14 (COMBS)
2668.54 TO W 1/4 COR SEC 14

1982 BARNES N-19 THE CORNER WAS DESTROYED BY EXCAVATION. IT IS IMPOSSIBLE TO SET ANYTHING AT THE CORNER. THE CORNER IS ESTABLISHED AT THE MEAN LOCATION OF THE PROJECTION OF THE SW & S 1/16TH CORNERS OF SEC 14 AND THE CENTER & 1/16TH CORNERS OF SECTION 23. THIS IS ALSO IN HARMONY WITH RUGER'S DISTANCE TO THE CENTER OF SEC 14. SHOWS DISTANCES N, S, E, & W. FD CI AT CENTER OF SEC 14. DRAWING SHOWS DISTANCES & BEARINGS TO ESTABLISHED POSITION & THE PROJECTED POSITIONS.

1982 BARNES R-21 2665.65 TO SW COR SEC 14 & N89-57-23E 2657.30 TO SE COR SEC 14, ANGLE @ SE COR SEC 14 FROM S 1/4 COR SEC 14 TO E 1/4 COR SEC 14 IS 89-24-12, ANGLE @ SE COR SEC 14 FROM E 1/4 COR SEC 23 TO S 1/4 COR SEC 14 IS 90-43-04, & , ANGLE @ SE COR SEC 14 FROM S 1/4 COR SEC 14 TO SEC 13 IS 180-55-54

1982 THOM CSM VOL 11 PG 343 LOST BY MINING - COMPUTED. 2649.33 TO CENTER OF SEC 14 A COUNTY MON

1992 THOM MAP #11295 MORTGAGE INSPECTION. STATES NOTHING ABOUT MON.

1995 COMBS CSM VOL 18 PG 90 COMPUTED POSITION PER RLT CSM VOL 11 PG 343. 2649.33 TO GEN SEC 14.

2002 ERICKSON FED PRELIMINARY. N89-21-23E 2657.30' NAD83 TO NE COR SEC 23, N01-14-44W 2650.41 NAD83 TO GEN SEC 14, S01-12-04E 2660.88 TO SW COR SEC 23.

THE CUT L.S. MONUMENT WAS DESTROYED BY THE EXPANSION OF THE LARGE POND.

C) Was the corner restored through acceptance of (1) an obliterated evidence location, or, (2) a found perpetuated location?

I USED MY DISTANCE FROM THE HH AT THE S 1/16TH COR OF THE SW 1/4 OF SEC 14 AND SUNNY'S AND THOMS DISTANCES TO THE FOUND PIPES AND PINS TO THE NORTH. THIS POSITION IS IN HARMONY WITH ALL OF THE FOUND MONUMENTS

I, Donald Barnes, hereby certify that the corner location as identified by the corner code index was determined by me under my direction and control and that this U.S. Public Land Survey Monument Record is correct and complete to the best of my knowledge and belief.

Seal

Donald Barnes

Emboss

May 12, 2003

SHEET 2 OF 3

CORNER CODE **N-19(1)**

A.E. 7.08 REQUIREMENT

Embossed Seal
James
 May 3

VERY LARGE BODY OF WATER

UNDERGROUND HOUSE

SCHUMAN RD

S 1/4 COR
 SEC 14
 PLYMOUTH TWP
 T2N R11E

FD 2' PIPE
 CENTER OF
 SEC 14

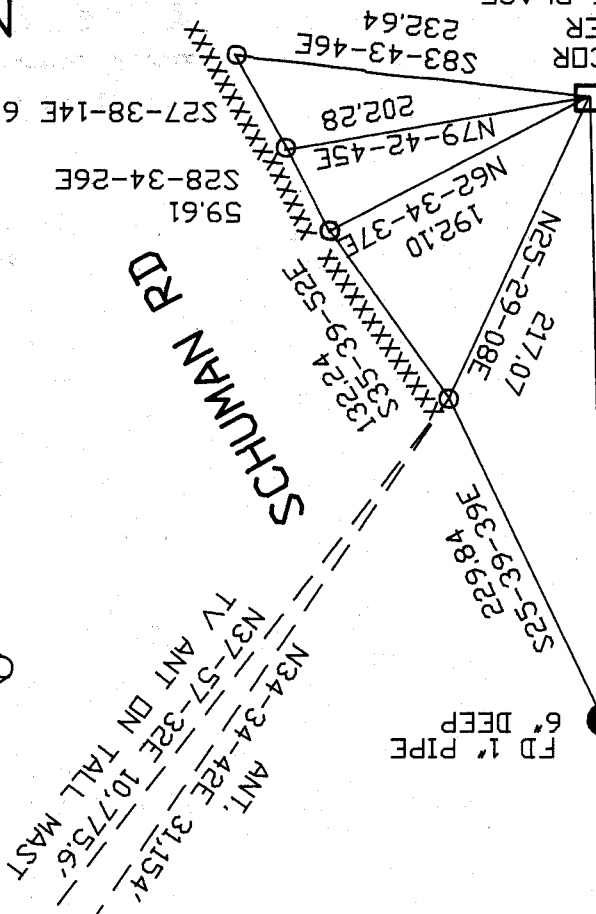
1950 SUNNY #4354 403.1X
 N00-52-09W 403.12
 N00-16-31W 360.35
 N00-37-37W 418.29
 N00-38-22W 1467.56

N00-35-20W 763.46
 1982 THDM 763.47
 1982 THDM 1885.86
 N00-38-12W 1885.85

FD BENT
 PIN 0.1' DEEP
 FD BENT
 PIN 0.1' DEEP
 FD PIN
 0.1' DEEP

LOT 1 CSM
 VOL 11 PG 343
 1982

FD 1' PIPE
 6' DEEP



S 1/4 COR
 IN WATER
 DID NOT PLACE
 MONUMENT

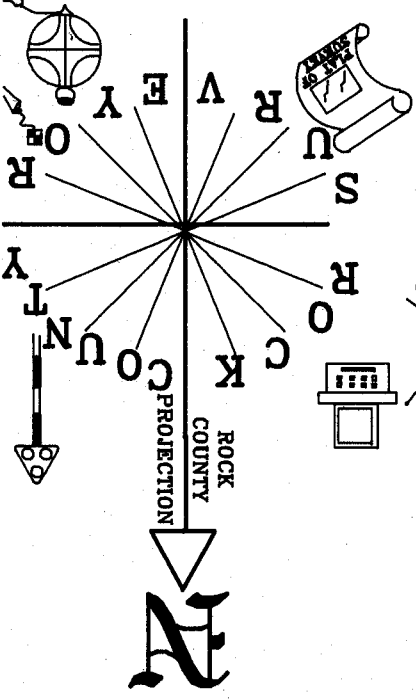
N-19(n)

MAP 3 OF 3

3/4X24' REROD/
 PLASTIC CAPS/
 WEST SIDE OF
 FENCE

OBSERVATION SHEET #71

NOT TO SCALE



(1)91-N