

# U.S. PUBLIC LAND SURVEY MONUMENT RECORD

For Public Land Survey Corners in:

WI ADMINISTRATIVE CODE A-E 7.08 REQUIREMENT

T. 2 N., R. 11 E

### CORNER CODE INDEX

A	1	2	3	4	5	6	7	8	9	10	11	12	13	14	15	16	17	18	19	20	21	22	23	24	25
B	6																								
C																									
D																									
E	•																								
F																									
G	1																								
H																									
I																									
J																									
K																									
L	18																								
M																									
N																									
O																									
P	19																								
Q																									
R																									
S																									
T	30																								
U																									
V																									
W																									
X																									
Y																									
Z																									

PLYMOUTH TWP

ROCK COUNTY WI

IF AVAILABLE  
ROCK COUNTY COORDINATES PREFERRED

North \_\_\_\_\_ Elev. \_\_\_\_\_

East \_\_\_\_\_

Hor. Datum \_\_\_\_\_ Vert. Datum \_\_\_\_\_

LATITUDE \_\_\_\_\_ ELLIPS. HT. \_\_\_\_\_

LONGITUDE \_\_\_\_\_

GPS (X) \_\_\_\_\_ TRAVERSE (X) \_\_\_\_\_

BASED ON THE FOLLOWING CONTROL:

PLACE MONUMENT SYMBOL  AT PROPER LOCATION ON ABOVE INDEX

CORNER MONUMENT

WITNESS MONUMENT

(a)

BEARINGS ARE BASED ON:

OBSERVATION SHEET 7103

FIELD BOOK \_\_\_\_\_ PAGE # \_\_\_\_\_

SHEET 1 OF 3

SHOW A PLAN VIEW DRAWING DEPICTING THE CORNER MONUMENT AND SURROUNDING PHYSICAL FEATURES, INCLUDING THE EXCAVATION AREA AND DEPTH.

PLANNING & ZONING COMMITTEE ADOPTED THE ABOVE FORM ON 12/2/1982

CORNER CODE E-3(1)

PL522

(B) Describe any record evidence, monument evidence, occupational evidence, testimonial evidence or any other material evidence you considered, and whether the monument was found or placed.

- 1833 HARRISON WEST BET SECS 6 & 7  
2640 TEMPY 1/4 P  
3168 LEFT TIMBER & ENTER PRAIRIE  
5287.26 INT. W. BDY 238.92' N OF P & ESTABLISHED COR TO  
SEC 6 & 7 } MARKED POST IN MOUND LAND  
ROLLING 2<sup>ND</sup> RATE WITH W.O. WALNUT CHERRY  
COR EAST  
2647.26 QUARTER SEC COR. {W.O. 24 N11W 15.18' CHERRY  
18 S14W 5.28' WO 24 CHERRY} MARKED  
5287.26 SEC COR
- 1843 STEBBIN TWP RD REC BK 1 PG 2 VARIATION OF NEEDLE 7 1/2  
BEGINNING AT THE SE COR OF SEC 1 T2N R11E; THENCE  
WEST 2 1/2 MILES (THIS COURSE FROM QUARTER POST ON  
SOUTH SIDE OF SEC 1 TO SW COR SOUTH ON A RANGE FROM  
BELOIT TO MADISON) TO THE QUARTER STAKE ON THE  
SOUTH LINE OF SEC 3; THENCE N72W ONE MILE AND 20  
CHAINS TO A STAKE; THENCE 59 WEST 1079.1' TO A BURR  
OAK TREE; THENCE N70W 815.1' TO A STAKE; THENCE S65W  
2610.3' TO A BLACK OAK TREE; THENCE S45W 1894.2' TO  
SEC BETWEEN SECTIONS 5 & 8, 247.5' EAST OF THE SE COR  
OF SEC 6, T2N R11E; THENCE WEST FOUR MILES 3679.5' TO  
A STAKE ON THE SEC LINE BETWEEN SECS 4 & 9, 660' WEST  
OF THE QUARTER POST; THENCE N43 1/2W 838.2' TO A BURR  
OAK TREE; THENCE N65W 3444.54' TO A POINT ON THE LINE  
BETWEEN THE COUNTIES OF ROCK AND GREEN 341.88'  
SOUTH OF THE QUARTER POST ON THE WEST SIDE OF SEC 7,  
T2N, R10E AND THE WHOLE LENGTH OF THE ROAD IS 12  
MILES 3927'
- 1845 PEASE TWP RD REC BK 1 PG 7 BEGINNING AT THE SE COR  
OF SEC 3 IN T2N R11E RUNNING THENCE WEST ON THE SOUTH  
SIDE OF SEC 3 AFORESAID 5214' AND TO THE SE COR OF SEC  
4, 5854.2' TO THE SE COR OF SEC 5; THENCE WEST 5272.74  
ON THE SOUTH SIDE OF SEC 5; THENCE WEST 5287.26' ON THE  
SOUTH SIDE OF SEC 6 AND TO THE LINE BETWEEN RANGE 10 &  
11; THENCE WEST 5306.4' ON THE SOUTH SIDE OF SEC 1 T2N  
R10E; "'''''''' SAID RD IS 66' WIDE & 33' ON EACH SIDE OF THE  
DESCRIBED RD. VAR OF NEEDLE FOUND BY COMPAISON WITH  
OLD LINES. {DISTANCES MATCH ORIG. GOV SURVEYOR'S DIST}
- 1858 CHURCH VOL 1 PG 66 VAR 7-45 2637.36 TO GEN SEC 7 &  
VAR 7-45 5274.72 TO S 1/4 COR SEC 7
- 1867 LOCKE VOL 1 PG 293 & MAP #4326 FOUND STUMPS OF BT &  
STAKE OF W.O. N11E
- 1868 LOCKE REMONUMENTATION FIELD NOTES.  
PG 79 WEST BETWEEN SECS 6 AND 7 VAR -  
328.02 CENTER OF BRIDGE 5.94' WIDE  
2655.84 INTERSECTED 1/4 LINE 4.62' NORTH OF COR. FOUND  
STUMPS OF B.T.S AND STAKE. NORTH BT. IS N11E  
VAR CORRECTED -  
CONTINUED WEST FROM 1/4 COR WITH VAR -  
2655.84 SET OFF 9.9' SOUTH  
5334.45 INTERSECTED WEST BOUNDARY 38.94' NORTH OF  
COR.  
VAR CORRECTED - SEPT 15 1868
- 1869 RUGER VOL 2 PG 9 FOUND STONE MONUMENT BY LOCKE.  
SHOWS A DISTANCE OF 2758.8 TO CENTER OF SECTION 7.
- 1870 RUGER VOL 2 PG 16 & VOL 6 PG 405 FOUND STONE POST  
SET BY LOCKE. USED CORNER TO SUBDIVIDE SW 1/4 OF SEC  
6. 2657.50 TO SE AND 2686.86 TO SW CORNERS OF  
SECTION 6.
- 1892 BLEEDORN VOL 2 PG 463 CALLS FOR MON BUT STATES  
NOTHING ABOUT IT.
- 1979 BARNES VOL 6 PG 1 RECORD DISTANCES

*Ronald Barnes*  
2-25-03

SHEET 1 OF 3 CORNER CODE E-3(1)

PL522

1989 BARNES VOL 6 PG 402 FD L.S. N89-11-26E 2655.71 TO NE COR SEC 7, S84-22-48W 2677.76 TO SW COR SEC 6, & S1-03-50E 5405.54 TO S ¼ COR SEC 7.

1989 BARNES E-3 DUG AND FOUND CUT LIMESTONE 2.5' NORTH OF CENTER LINE OF PAVEMENT. TOP OF STONE IS 6 INCHES DEEP. BROKE EAST HALF OF THE TOP 18 INCHES OFF. PLACED 3 MAGNETS BY STONE. PLACED POLY MON ON TOP OF STONE & REFERENCED SAME. COR IS 2.5' NORTH OF CENTER OF PVMT.

1993 COMBS MAP #10004 FD ALUM. S85-10-05W 2677.73 TO NW COR SEC 7.

1994 LATHROP CSM 17-255&308 ALUM 2677.30 TO NW COR SEC 7 A ALUM

1994 SCHROEDER CSM VOL 18 PG 46 STATES NOTHING ABOUT MON.

1998 COMBS CSM 21-218 FD ALUM MON. 2655.65 TO SE COR SEC 6 A ALUM.

1998 HOULE CSM 21-362 ALUM. 2677.76 TO SW COR SEC 6

2000 LATHROP CSM 23-145 FD ALUM. ANGLE 90-38-57 @ S ¼ COR SEC 6 FROM N ¼ COR SEC 6 TO SE COR SEC 6.

*C) Was the corner restored through acceptance of (1) an obliterated evidence location, or, (2) a found perpetuated location?*

ACCEPTED POLY MON. USED MY OLD OBSERVATIONS

*D) Describe any material discrepancy between the location of the corner as restored or reestablished and the location of that corner as previously restored or reestablished by distance and direction. Show the discrepancy on the plan view drawing under (a), above. Show the distances between the corner as previously restored or reestablished and (1) the corner as restored or reestablished, and (2) to at least 4 of the witness monuments shown on the drawing in (a), above.*

*(E) Was the corner reestablished through lost corner proportionate methods? If so, show the method, including the directions and distances to other public land survey corners used as evidence or used for proportioning the corner location.*

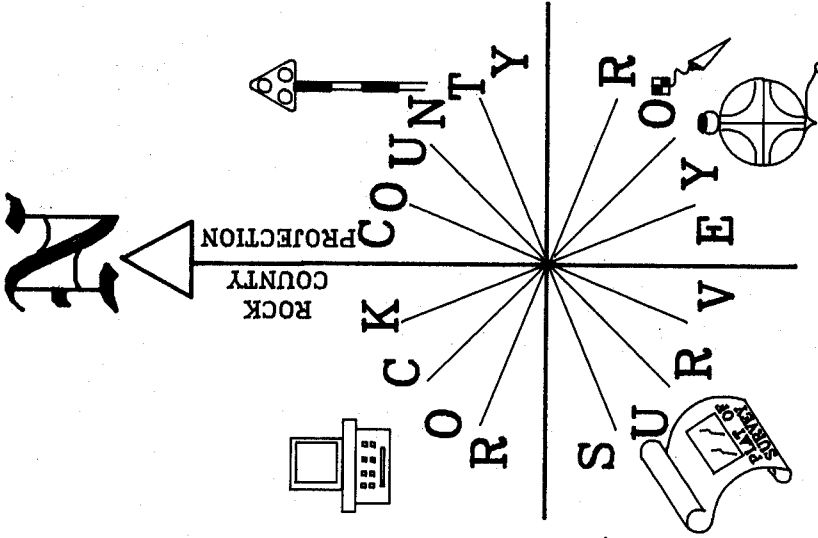
I, **Donald Barnes**, hereby certify that the corner location as identified by the corner code index was determined by me under my direction and control and that this U.S. Public Land Survey Monument Record is correct and complete to the best of my knowledge and belief.

Seal  
*Donald Barnes*  
2/25/03

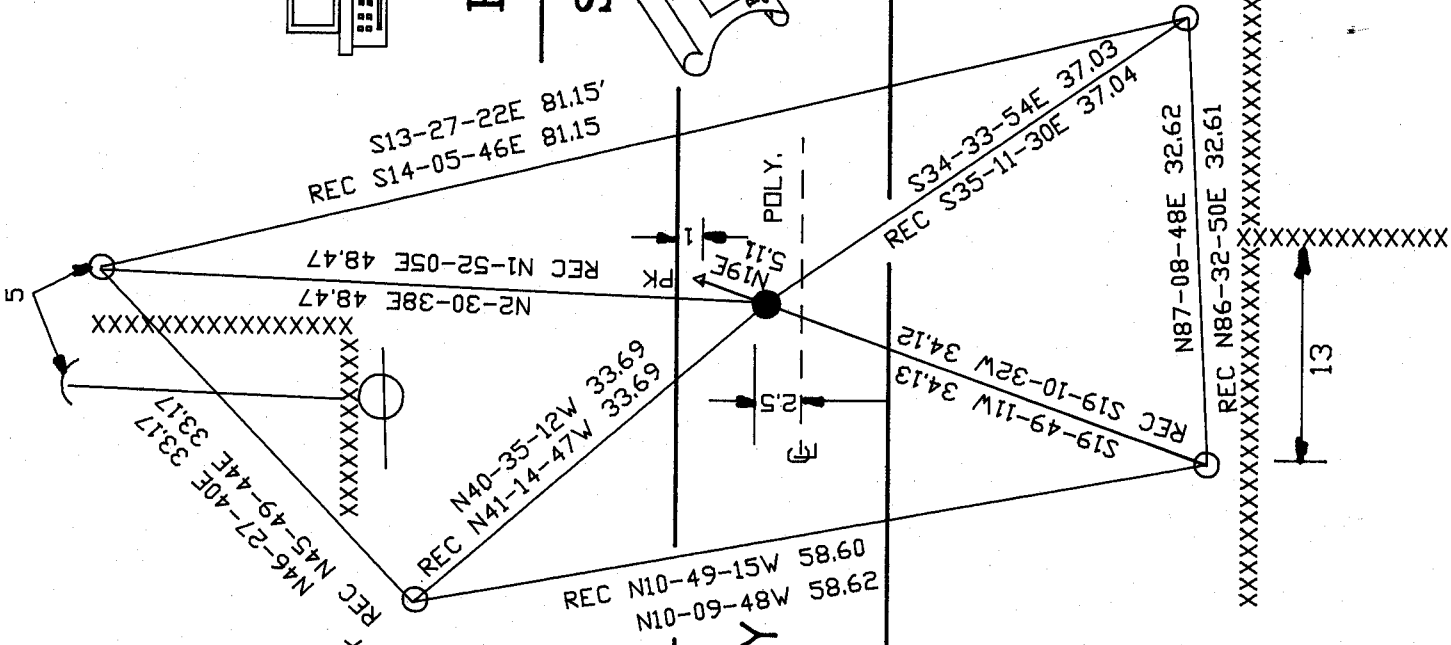
Emboss

SHEET 2 OF 3

CORNER CODE **E-3(1)**  
A-E 7.08 REQUIREMENT



NOT TO SCALE  
 ○ REC 1/2X24" REROD  
 □ OBSERVATION SHEET #7103



N 1/4 COR  
 SEC 7  
 PLYMOUTH TWP  
 T2N R11E

SPRING VALLEY  
 CORNERS RD

SHEET 3 OF 3

E-3(1)

EMBOSSSED  
 SEAL  
*Donald B. ...*  
 02/25/03