

U.S. PUBLIC LAND SURVEY MONUMENT RECORD

For Public Land Survey Corners In:

WI ADMINISTRATIVE CODE A-E 7.08 REQUIREMENT

T. 2N. R. 11E.

CORNER CODE INDEX

	1	2	3	4	5	6	7	8	9	10	11	12	13	14	15	16	17	18	19	20	21	22	23	24	25		
A																											A
B																											B
C																											C
D																											D
E																											E
F																											F
G																											G
H																											H
J																											J
K																											K
L																											L
M																											M
N																											N
O																											O
P																											P
Q																											Q
R																											R
S																											S
T																											T
U																											U
V																											V
W																											W
X																											X
Y																											Y
Z																											Z

PLYMOUTH TWP
ROCK COUNTY WI

IF AVAILABLE
ROCK COUNTY COORDINATES PREFERRED

North _____ Elev. _____

East _____

Hor. Datum _____ Vert. Datum _____

LATITUDE _____ ELLIPS. HT. _____

LONGITUDE _____

GPS (X) _____ TRAVERSE (X) _____

BASED ON THE FOLLOWING CONTROL:

PLACE MONUMENT SYMBOL AT PROPER LOCATION ON ABOVE INDEX

CORNER MONUMENT WITNESS MONUMENT

(a) BEARINGS ARE BASED ON: _____

OBSERVATION sheets 527

FIELD BOOK _____ PAGE # _____ SHEET 1 OF 4

SHOW A PLAN VIEW DRAWING DEPICTING THE CORNER MONUMENT AND SURROUNDING PHYSICAL FEATURES, INCLUDING THE EXCAVATION AREA AND DEPTH.

PLANNING & ZONING COMMITTEE ADOPTED THE ABOVE FORM ON 12/2/1982

CORNER CODE E-13(1)

PL527

B) Describe any record evidence, monument evidence, occupational evidence, testimonial evidence or any other material evidence you considered, and whether the monument was found or placed.

- 1833 HARRISON PG 23 NORTH BETWEEN 9 & 10
- 1226.94 BURR O 14
2640 QUARTER SEC COR. {BURR O 16 N31E 34.32'
BURR O 14 S67W 7.26' BURR O 16 BURR O
14} MARKED
- 3300 LEFT TIMBER & ENTER MARSH
3778.5 BROOK 16.5' CRB S.E.
5280 COR TO SECS 3 4 9 10 IN MARSH SET POST &
RAISED MOUND. LAND LEVEL & WET FOR LAST 1/2
MILE. ROLLING 2ND RATE FOR THE S 1/2 TIMBER
BURR O.
EAST ON RAND. BET 3 & 10
- 2640 TEMPY 1/4 SEC COR.
5253.6 INT. E. BDB 40.26' N OF P LAND LEVEL & WET 2ND
RATE GROWTH GRASS & WILLOWS
COR. WEST
- 2626.8 QUARTER SEC. COR. IN MARSH. POST & RAISED
MOUND
5253.6 SEC COR
NORTH BET 3 & 4
- 2574 LEFT MARSH 7 ENTER PRAIRIE
2640 QUARTER SEC COR. SET A POST & RAISED MOUND
5214 INT. N. BDB 26.4' E OF P. SET POST & RAISED
MOUND FOR COR TO SECS 3 & 4. LAND 1ST 1/2
LEVEL & WET 3RD RATE- MARSH- NORTH 1/2 ROLLING
1ST RATE PRAIRIE DEC 26TH 1833
EAST BET 4 & 9 ON RAND
- 2260.5 BROOK 10.56' CRB S.E.
2640 TEMPY 1/4 P
5326.2 INT. E. BDB 49.50' N OF P. LAND LEVEL & WET 3RD
RATE ? GRASS & WEEDS
COR WEST
- 2663.1 QUARTER SEC COR POST & MOUND IN MARSH
5326.2 INT. SEC COR
- 184? UNKNOWN VOL 6 PG 331 RD RECORDS IN COUNTY CLERK'S
VAULT. 2634.72 TO S 1/4 COR SEC 3.
- 1843 STEBBIN TWP RD REC BK 1 PG 2 VARIATION OF NEEDLE 7 1/2
BEGINNING AT THE SE COR OF SEC 1 T2N R11E; THENCE
WEST 2 1/2 MILES (THIS COURSE FROM QUARTER POST ON
SOUTH SIDE OF SEC 1 TO SW COR SOUTH ON A RANGE FROM
BELDIT TO MADISON) TO THE QUARTER STAKE ON THE
SOUTH LINE OF SEC 3; THENCE N72W ONE MILE AND 20
CHAINS TO A STAKE; THENCE S9 WEST 1079.1' TO A BURR
OAK TREE; THENCE N70W 815.1' TO A STAKE; THENCE S65W
2610.3' TO A BLACK OAK TREE; THENCE S45W 1894.2' TO
SEC BETWEEN SECTIONS 5 & 8, 247.5' EAST OF THE SE COR
OF SEC 6, T2N R11E; THENCE WEST FOUR MILES 3679.5' TO
A STAKE ON THE SEC LINE BETWEEN SECS 4 & 9, 660' WEST
OF THE QUARTER POST; THENCE N43 1/2W 838.2' TO A BURR
OAK TREE; THENCE N65W 3444.54' TO A POINT ON THE LINE
BETWEEN THE COUNTIES OF ROCK AND GREEN 341.88'
SOUTH OF THE QUARTER POST ON THE WEST SIDE OF SEC 7,
T2N, R10E AND THE WHOLE LENGTH OF THE ROAD IS 12
MILES 3927'
- 1845 PEABE TWP RD REC BK 1 PG 7 BEGINNING AT THE SE COR
OF SEC 3 IN T2N R11E RUNNING THENCE WEST ON THE
SOUTH SIDE OF SEC 3 AFORESAID 5214' AND TO THE SE
COR OF SEC 4, 5854.2' TO THE SE COR OF SEC 5; THENCE
WEST 5272.74 ON THE SOUTH SIDE OF SEC 5; THENCE WEST
5287.26' ON THE SOUTH SIDE OF SEC 6 AND TO THE LINE
BETWEEN RANGE 10 & 11; THENCE WEST 5306.4' ON THE
SOUTH SIDE OF SEC 1 T2N R10E; " " " " SAID RD IS 66' WIDE
& 33' ON EACH SIDE OF THE DESCRIBED RD. VAR OF
SHEET 1 OF 4 CORNER CODE E-13(1)

Paul Boenig

2/03/03

PL527

NEEDLE FOUND BY COMPARISON WITH OLD LINES.
{DISTANCES MATCH ORIG. GOV SURVEYOR'S DIST}

- 1847 TWP RD REC BK 1 PG 19 BEGINNING AT THE SW COR OF SEC 2, T2, R11E AND RUNNING WESTERLY BETWEEN SEC 3 & 10, 4 AND 9, 5 & 8 TO THE HIGHWAY THAT RUNS WEST FROM NEAR THE SW COR OF SEC 5 ALL OF THE SAME TWP AND RANGE. SAID RD IS 66' IN WIDTH.
- 1847 TWP RD REC BK 1 PG 21 BEGINNING AT THE NW COR OF SEC 3 AND 4, 9 AND 10, 15 AND 16, 21 AND 22 TO THE SW COR OF SEC 22. SAID RD IS 66' IN WIDTH
- 1855 CHURCH VOL 1 PG 39 STATES NOTHING ABOUT CORNER. SHOWS A DISTANCE OF 2640 TO THE S 1/4 CORNER OF SECTION 3.
- 1863 TWP RD REC BK 1 PG 45 COMMENCING AT THE NW COR OF SEC 10 IN SAID TOWN AND RUNNING SOUTHERLY ON SAID LINE BETWEEN SEC 9 & 10 THREE QUARTERS OF A MILE TO THE NW COR OF THE SOUTH WEST 1/4 OF THE SW 1/4 OF SEC 10 IN SAID TOWN. THE LINE OF SAID SURVEY TO BE THE CENTER OF SAID HIGHWAY AND THE SAME IS ESTABLISHED 66' IN WIDTH.
- 1866 LOCKE VOL 1 PG 277 & 278 & MAP #4317 FOUND STAKE SET STAKE SURROUNDED BY 3 LIMESTONES.
- 1868 LOCKE VOL 1 PG 320 & MAP #4335 FD COR AS SET BY SL. VAR 6 2676.30 TO N 1/4 COR SEC 9, & 2654.52 TO E 1/4 COR SEC 9.
- 1868 LOCKE REMONUMENTATION FIELD NOTES. PLACED OUT LIMESTONE.
- PG 47 NORTH BETWEEN SECS 3 AND 4 VAR 7-25
- 2655.84 INTERSECTED 1/4 LINE 3.96' WEST OF COR. FOUND POST IN MOUND 6 INCHES SOUTH TO COR POST TO FENCES VAR CORRECTED 7-20
- CONTINUED NORTH FROM 1/4 COR WITH VAR 7-20
- 5243.04 INTERSECTED NORTH BOUNDARY 11.88' EAST OF COR. CORNERS FOR TOWN 2 AND 3 BOTH LOST. SET COR FOR TOWN 3 MIDWAY AND ON A RIGHT LINE BETWEEN THE 1/4 COR 1/2 MILE EAST AND WEST AND SET THE COR. FOR TOWN 2 2.64'? 26.4'? EAST OF COR. FOR TOWN 3 COR IN CENTER OF HIGHWAY VAR CORRECTED 7-35 SEPT 3 1868 PG 50 WEST BETWEEN SECS 4 AND 9 VAR 6
- 371.58 CENTER B & M RR
- 1338.15 1/4 1/4 COR SET BY SELF
- 2676.3 INTERSECTED 1/4 LINE AT COR. SET BY SELF. (SEE CO. SURVEYORS RECORD SEC 4)
- 3082.2 EAST BANK OF BASS CREEK
- 3095.4 WEST BANK OF BASS CREEK
- 5352.6 INTERSECTED WEST BOUNDARY AT COR. AS SET BY SELF. SEE COUNTY SURVEYORS RECORD SEC 4 COR. IN LINE OF N AND S FENCES. SEPT 4 1868
- PG 45 NORTH BETWEEN SECS 9 & 10 VAR 6-55
- 2661.12 INTERSECTED 1/4 LINE AT COR. FOUND STUMPS OF BTS AND STONE SET BY CHURCH (SEE CO. S. RECORD) ALSO BTS TAKEN BY CHURCH. COR 0.66' SW OF POST IN FENCE
- CONTINUED NORTH WITH VAR 6-20
- 3286.8 ENTER MARSH
- 3785.1 CENTER OF BRIDGE OVER BASS CREEK 21.12' WIDE
- 5041.74 CENTER RR TRACK
- 5318.28 INTERSECTED NORTH BOUNDARY AT COR. FOUND COR. AS SET BY SELF. SEE CO. SURVEYORS RECORD SEC 4. COR IN CENTER OF HIGHWAY. SEPT 3 1868

Dwight Barnes SHEET 2 OF 4 CORNER CODE E-13(1)

2/03/03

PL527

1810.38 PG 46 EAST BETWEEN SECS 3 AND 10 VAR 5-42
CENTER SLUIDE BRIDGE
2644.95 INTERSECTED 1/4 LINE 3.96' SOUTH OF COR.
FOUND WHERE STAKE WAS PULLED OUT. IN
CENTER OF HIGHWAY AND NEARLY IN LINE WITH
FENCES RUNNING N AND S. VAR CORRECTED 5-47

CONTINUED EAST FROM 1/4 COR. WITH VAR 5-42

2766.72 CENTER OF SLUIDE BRIDGE
4505.16 CENTER OF SLUIDE BRIDGE
5289.9 INTERSECTED EAST BOUNDARY AT COR.

SEPT 3 1868

1871 RUBER VOL 2 PG 60 STONE MON. 2645.78 TO N 1/4 COR SEC
10 & VAR 6-10 2656.06 TO W 1/4 COR SEC 10

1933 SUNNY VOL 3 PG 235 FOUND 6 X 6 STONE IN LINE WITH
FENCE N & CENTER OF ROAD EAST. SET 1" PIPE ON TOP.
SHOWS A DISTANCE OF 5243.0 TO THE NW CORNER OF
SECTION 3.

1974 LEE VOL 5 PG 11 FD CUT STONE. SET ALUM. & REFERENCED.
2678.32 TO N 1/4 COR SEC 9

1988 BARNES VOL 6 PG 386 & 388 N1-13-51W 2656.82 TO W 1/4
COR SEC 3, 80-25-20E 2657.70 TO W 1/4 COR SEC 10, 889-
59-53E 2647.40 TO S 1/4 COR SEC 3.

1988 BARNES E-13 FD CUT LIMESTONE 23" DEEP. BROKE STONE
LENGTH WISE. TOOK THE TOP 14". PLACED MAGNET & R/R
SPIKE ON STONE. 2' WEST OF CENTER OF N/S RD, SOUTH OF
CENTER OF E/W RD. REFERENCED SAME.

1999 COMBS OSM22-222 PK 2657.60 TO E 1/4 COR SEC 9 R/R SPIKE

FD LARGE MAG NAIL & TIES.

C) Was the corner restored through acceptance of (1) an obliterated evidence location, or, (2) a found perpetuated location?

ACCEPTED MAG NAIL & TIES AS PERPETUATING THE FOUND CUT
L.S.

D) Describe any material discrepancy between the location of the corner as restored or reestablished and the location of that corner as previously restored or reestablished by distance and direction. Show the discrepancy on the plan view drawing under (a), above. Show the distances between the corner as previously restored or reestablished and (1) the corner as restored or reestablished, and (2) to at least 4 of the witness monuments shown on the drawing in (a), above.

I, Donald Barnes, hereby certify that the corner location as identified by the corner code index was determined by me under my direction and control and that this U.S. Public Land Survey Monument Record is correct and complete to the best of my knowledge and belief.

Seal
Donald Barnes

2/03/03

Emboas

SHEET 3 OF 4

CORNER CODE **E-13(1)**
A-E 7.08 REQUIREMENT

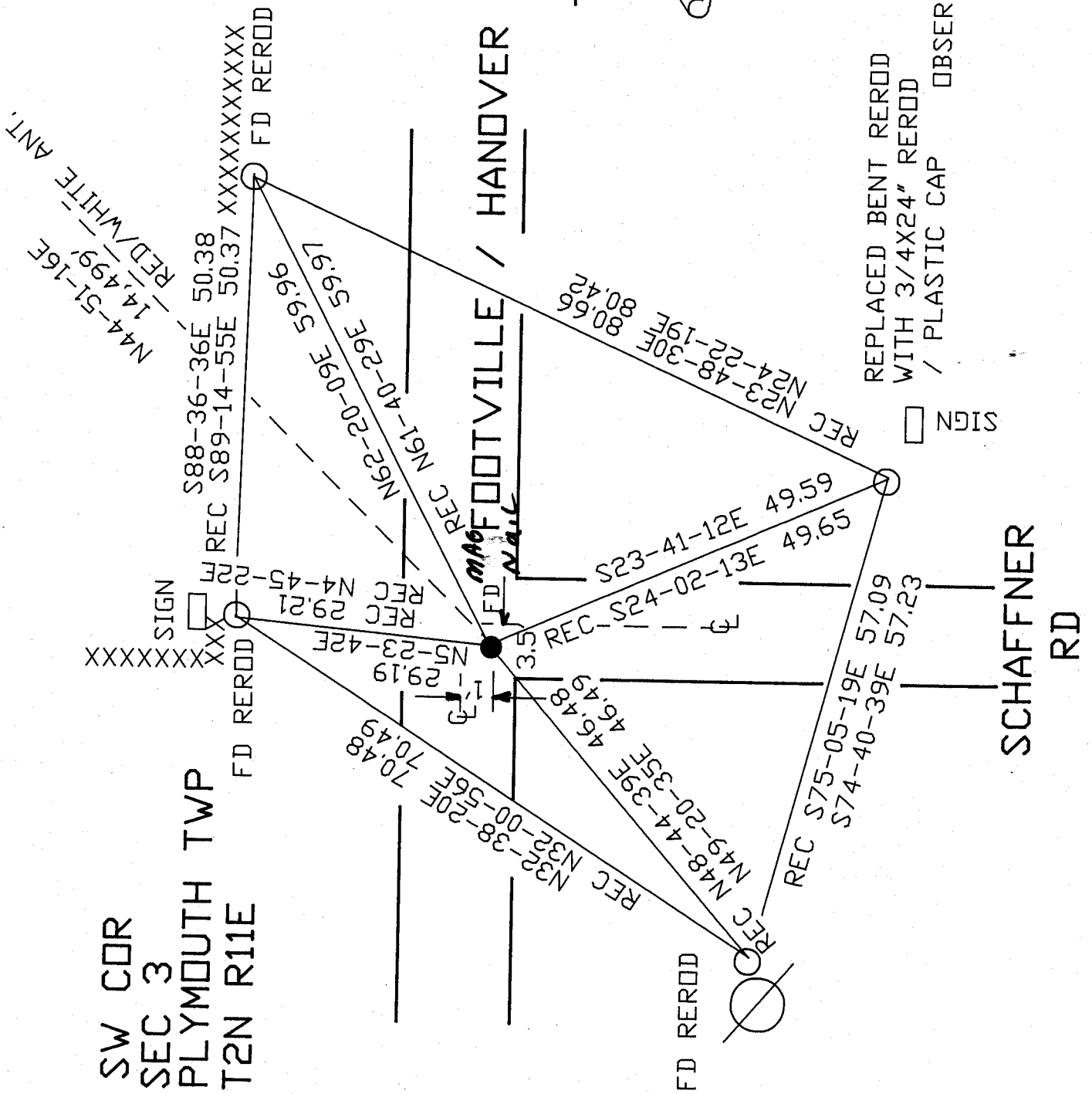
SW COR
 SEC 3
 PLYMOUTH TWP
 T2N R11E

EMBOSSED
 SEAL

Donald Barnes
 2-03-03

SHEET 4 OF 4

E-13(1)



REPLACED BENT REROD
 WITH 3/4X24" REROD
 / PLASTIC CAP

OBSERVATION SHEETS 702,705, & 527