

U.S. PUBLIC LAND SURVEY MONUMENT RECORD

For Public Land Survey Corners In:

WI ADMINISTRATIVE CODE A-E 7.08 REQUIREMENT

T. 2 N. R. 11 E.

CORNER CODE INDEX

	1	2	3	4	5	6	7	8	9	10	11	12	13	14	15	16	17	18	19	20	21	22	23	24	25
A																									
B																									
C	6																								
D																									
E																									
F																									
G	7																								
H																									
J																									
K	18																								
L																									
M																									
N																									
O																									
P	19																								
Q																									
R																									
S																									
T	30																								
U																									
V																									
W																									
X	31																								
Y																									
Z																									

PLYMOUTH TWP
ROCK COUNTY WI

IF AVAILABLE
ROCK COUNTY COORDINATES PREFERRED

North _____ Elev. _____

East _____

Hor. Datum _____ Vert. Datum _____

LATITUDE _____ ELLIPS. HT. _____

LONGITUDE _____

GPS (X) _____ TRAVERSE (X) _____

BASED ON THE FOLLOWING CONTROL:

PLACE MONUMENT SYMBOL AT PROPER LOCATION ON ABOVE INDEX

CORNER MONUMENT

WITNESS MONUMENT

(a)

BEARINGS ARE BASED ON: _____

FIELD BOOK _____ PAGE # _____

SHEET 1 OF 2

SHOW A PLAN VIEW DRAWING DEPICTING THE CORNER MONUMENT AND SURROUNDING PHYSICAL FEATURES, INCLUDING THE EXCAVATION AREA AND DEPTH.

PLANNING & ZONING COMMITTEE ADOPTED THE ABOVE FORM ON 12/2/1982

CORNER CODE C-1(1)

PL514

(B) Describe any record evidence, monument evidence, occupational evidence, testimonial evidence or any other material evidence you considered, and whether the monument was found or placed.

1833 MULLETT NORTH ON EAST SIDE OF SECTION 1 (T2N R10E)

2376 LEAVE PRAIRIE

2640 SET QUARTER SECTION POST BLACK OAK 16 S48W

194.04' NO OTHER

2772 ENTER MARSH

3168 LEAVE MARSH

5280 SET TEMPY 6 MILE POST. LAND ROLLING SECOND RATE
SCATTERING BUR OAK PLUM, HAZEL, ASPEN

1867 LOCKE MAP #4326 FOUND STUMPS OF B.T.S AND STAKE.
PLACED STAKE SURROUNDED BY 3 LIMESTONES IN MOUND.
SHOWS A DISTANCE OF 2615.25 TO CENTER OF SECTION 6.

1868 LOCKE REMONUMENTATION FIELD NOTES.

PG 54 SOUTH ON WEST LINE SEC 6 VAR 7

0 SET OFF 9.57' EAST

2649.57 INTERSECTED 1/4 LINE 25.41' WEST OF COR. FOUND
COR. AS SET BY SELF (SEE CO. SURVS RECORD FOR
SEC 6 CO. IN LINE OF RAIL FENCE RUNNING E & W VAR
CORRECTED 7-45

CONTINUED SOUTH WITH VAR 7-30

5240.07 INTERSECTED SOUTH BOUNDARY 7.26' WEST OF
COR. FOUND STAKE IN MOUND 28.38' N OF AND IN
LINE OF FENCE ON E SIDE OF HIGHWAY VAR
CORRECTED 7-39 SEPT 4 186

1870 RUGER VOL 2 PG 16 FOUND STONE CORNER POST SET BY
LOCKE. SHOWS A DISTANCE OF 2586.54' TO SW CORNER AND
2603.92 TO CENTER OF SECTION 6. THIS IS DIFFERENT THAN
THAT SHOWN IN VOL 6 PG 405.

1870 RUGER VOL 6 PG 405. SAME AS VOL 2 PG 16 EXCEPT THE
DISTANCE TO THE SOUTH WEST IS 2583.57 AND THE DISTANCE
TO THE CENTER IS 2622.02'. COPIED FROM FIELD NOTES BOOK
"RL" PG 22 & 23. FD STONE COR POST SET BY LOCKE. VOL 2
PG 16 CONTAINS SOME ERRORS.

1989 BARNES C-1 DUG AND FOUND CUT LIMESTONE 2.3 DEEP. STONE
IS 4.5' EAST OF CENTER OF THE PAVEMENT. PLACED 2 MAGNETS
ON TOP OF STONE. REFERENCED SAME.

1993 COMBS MAP #9878 FD PK

1996 COMBS CSM 19-418 PK 2690.94 TO NW COR SEC 6

1998 HOULE CSM 21-362 PK 2589.09 TO SW COR SEC 6

FD REFERENCE MONUMENTS & USED MY 1989 OBSERVATIONS

Was the corner restored through acceptance of (1) an obliterated evidence location, or, (2) a found perpetuated location?

ACCEPTED FOUND CUT LIMESTONE.

D) Describe any material discrepancy between the location of the corner as restored or reestablished and the location of that corner as previously restored or reestablished by distance and direction. Show the discrepancy on the plan view drawing under (a), above. Show the distances between the corner as previously restored or reestablished and (1) the corner as restored or reestablished, and (2) to at least 4 of the witness monuments shown on the drawing in (a), above.

I, Donald Barnes, hereby certify that the corner points as identified by the corner code index were, in a field survey on, October 17, 1989, established, re-established, monumented, remonumented, recovered or restored as expressed below and in conformance with the regulations and rules as required in the current manual of survey instructions of the United States Department of Interior, Bureau of Land Management.

COUNTY SURVEYOR FILING DATA

SEAL

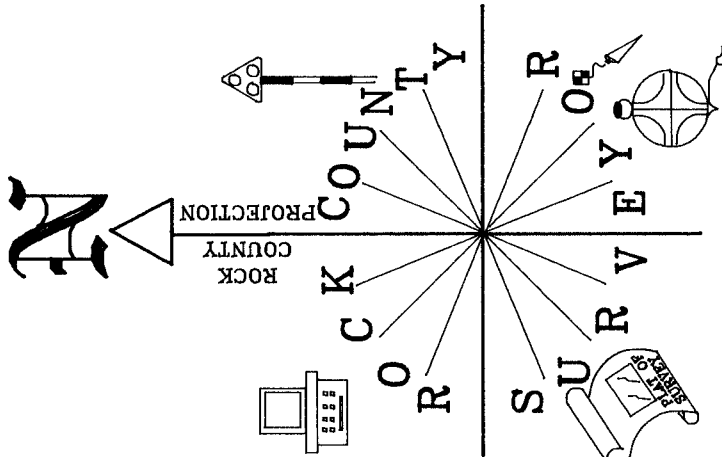
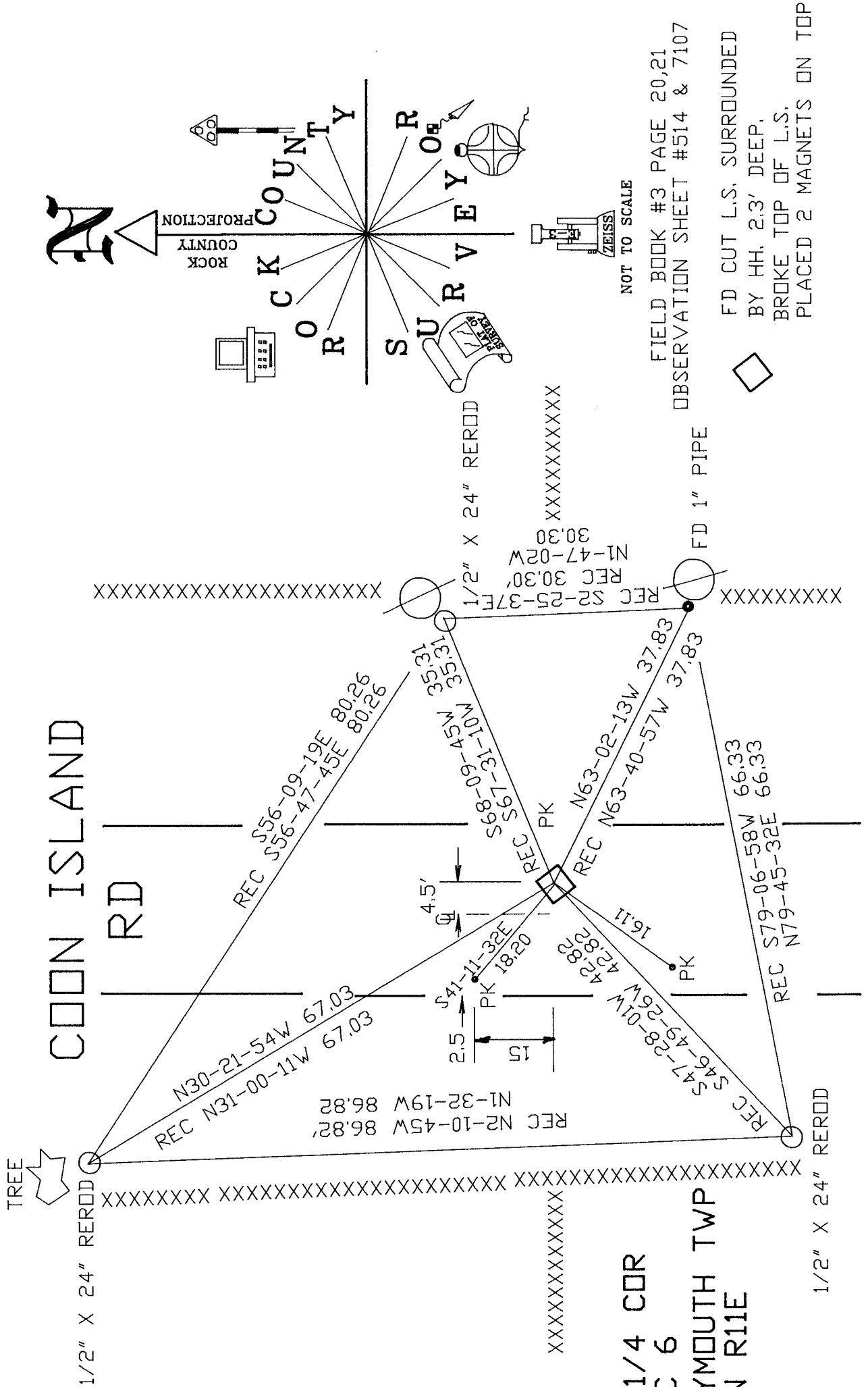
Donald Barnes

1/29/03

AFFIX YOUR LAND SURVEYOR SEAL

SHEET 1 OF 2

CORNER CODE C-1(1)



NOT TO SCALE
 FIELD BOOK #3 PAGE 20,21
 OBSERVATION SHEET #514 & 7107

FD CUT L.S. SURROUNDED
 BY HH. 2.3' DEEP.
 BROKE TOP OF L.S.
 PLACED 2 MAGNETS ON TOP



Donald Barnes
 EMBOSSED
 SEAL
 1/29/03

W 1/4 COR
 SEC 6
 PLYMOUTH TWP
 T2N R11E

SHEET 2 OF 2

