

Paper weight _____ (minimum)

Black nor. _____ required

U.S. PUBLIC LAND SURVEY MONUMENT RECORD

For Public Land Survey Corners in:

WI ADMINISTRATIVE CODE A-E 7.08 REQUIREMENT

T. 2N., R. 11E

CORNER CODE INDEX

A	1	2	3	4	5	6	7	8	9	10	11	12	13	14	15	16	17	18	19	20	21	22	23	24	25
B																									
C	6																								
D																									
E																									
F	1																								
G																									
H																									
I																									
J																									
K	18																								
L																									
M																									
N																									
O																									
P	19																								
Q																									
R																									
S																									
T	30																								
U																									
V																									
W																									
X	31																								
Y																									
Z																									

PLYMOUTH TWP
ROCK COUNTY WI

IF AVAILABLE
ROCK COUNTY COORDINATES PREFERRED

North _____ Elev. _____

East _____

Hor. Datum _____ Vert. Datum _____

LATITUDE _____ ELLIPS. HT. _____

LONGITUDE _____

GPS (X) _____ TRAVERSE (X) _____

BASED ON THE FOLLOWING CONTROL:

PLACE MONUMENT SYMBOL AT PROPER LOCATION ON ABOVE INDEX

CORNER MONUMENT

WITNESS MONUMENT

(a)

BEARINGS ARE BASED ON:

FIELD BOOK _____ PAGE # _____

SHEET 1 OF 2

SHOW A PLAN VIEW DRAWING DEPICTING THE CORNER MONUMENT AND SURROUNDING PHYSICAL FEATURES, INCLUDING THE EXCAVATION AREA AND DEPTH.

PLANNING & ZONING COMMITTEE ADOPTED THE ABOVE FORM ON 12/2/1982

CORNER CODE C-9(1)

PL516

(B) Describe any record evidence, monument evidence, occupational evidence, testimonial evidence or any other material evidence you considered, and whether the monument was found or placed.

1865 LOCKE VOL 1 PG 230 FOUND OLD STAKE SET POPLAR WITH L.S. 20X12X8 ON NORTH, L.S. 20X6X4 ON SOUTH AND SMALLER ONE ON WEST IN MOUND.

1866 LOCKE VOL 1 PG 277 FOUND CORNER SET BY SELF (SEE SEC. 5) USED TO SUBDIVIDE SECTION 4. 2665.74 TO CENTER OF SEC 4.

1867 LOCKE VOL 1 PG 280 FOUND CORNER AS SET BY SELF SECTION 4 USED TO SUBDIVIDE SECTION 5. 2664.42 TO CENTER OF SEC 5 & 2597.1 TO SE COR OF SEC 5.

1868 LOCKE VOL 1 PG 317 FOUND CORNER AS SET BY SELF USED TO SUBDIVIDE SEC 4.

1868 LOCKE REMONUMENTATION FIELD NOTES
NORTH ON EAST LINE OF SEC 5.

2601.06 FD COR AS SET BY SELF. 1 EAST OF N/S FENCE AND 5.94 SOUTH OF E/W FENCE. PLACED CUT LIMESTONE 5158.89 TO NE COR OF SEC 5.

1913 OWEN VOL 6 PG 386 CALLS FOR THE FOLLOWING:

2667.7 TO CENTER OF SEC 5

2671.3 TO CENTER OF SEC 4

87-52 ANGLE FROM CENTER OF 5 TO THE NE CORNER OF SEC 5.

1966 BATTERMAN JR. VOL 4 PG 255 SHOWS STONE IN MONUMENT BOX & SHOWS THE FOLLOWING:

2558.26 TO NE COR SEC 5

2668.7 TO CENTER OF SEC 5

88-13-45 ANGLE FROM CENTER OF SECTION 5 TO THE NE COR OF SEC 5.

1991 BARNES C-9 FOUND CUT L.S. IN ROUND MON. BOX & REFERENCED SAME.

FOUND CUT L.S. IN ROUND MON. BOX. MONUMENT WILL BE DESTROYED BY SEWER PROJECT.

C) Was the corner restored through acceptance of (1) an obliterated evidence location, or, (2) a found perpetuated location?

ACCEPTED FOUND PERPETUATED LOCATION

D) Describe any material discrepancy between the location of the corner as restored or reestablished and the location of that corner as previously restored or reestablished by distance and direction. Show the discrepancy on the plan view drawing under (a), above. Show the distances between the corner as previously restored or reestablished and (1) the corner as restored or reestablished, and (2) to at least 4 of the witness monuments shown on the drawing in (a), above.

(E) Was the corner reestablished through lost corner proportionate methods? If so, show the method, including the directions and distances to other public land survey corners used as evidence or used for proportioning the corner location.

I, Donald Barnes, hereby certify that the corner location as identified by the corner code index was determined by me under my direction and control and that this U.S. Public Land Survey Monument Record is correct and complete to the best of my knowledge and belief.

Seal

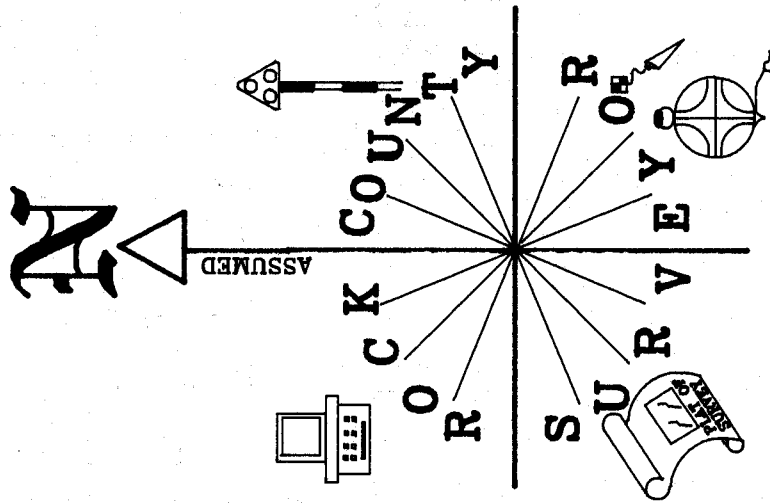
NUMBER OF INCLUDED SHEETS 1

Emilio
Donald Barnes
6/14/01

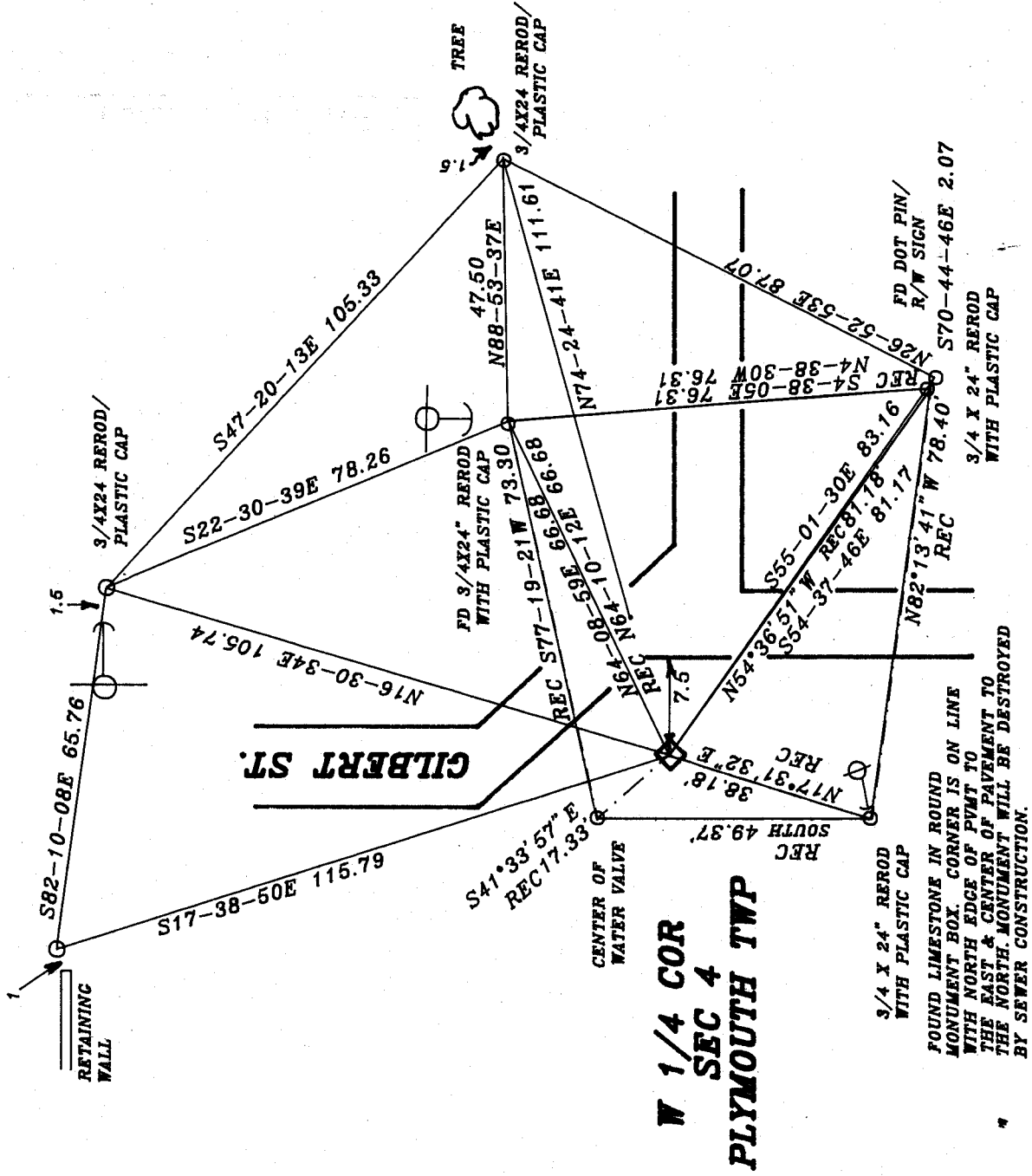
CORNER CODE

C-9(1)

A-E 7.08 REQUIREMENT



OBSERVATION SHEET #516
& FIELD BK #3 PC 80



**N 1/4 COR
SEC 4
PLYMOUTH TWP**

3/4 X 24" REROD
WITH PLASTIC CAP

FOUND LIMESTONE IN ROUND
MONUMENT BOX. CORNER IS ON LINE
WITH NORTH EDGE OF PAVMENT TO
THE EAST & CENTER OF PAVMENT TO
THE NORTH. MONUMENT WILL BE DESTROYED
BY SEWER CONSTRUCTION.

3/4 X 24" REROD
WITH PLASTIC CAP

FD DOT PIN/
R/W SIGN

EMBOSSED
SEAL
Deborah Barnes
6-24-01

C-9(1)