

# U.S. PUBLIC LAND SURVEY MONUMENT RECORD

For Public Land Survey Corners in:

WI ADMINISTRATIVE CODE A-E 7.08 REQUIREMENT

T. 2N., R. 11E

### CORNER CODE INDEX

A	2	3	4	5	6	7	8	9	10	11	12	13	14	15	16	17	18	19	20	21	22	23	24	25
B	6					5				4				3	1	2								1
C																								
D																								
E																								
F																								
G	1					8		9				10				11						12		
H																								
I																								
J																								
K																								
L	18					11		10				15				14						13		
M																								
N																								
O																								
P	19					20		21				22				23						24		
Q																								
R																								
S	30					29		28				27				26						25		
T																								
U																								
V																								
W																								
X	31					32		33				34				35						36		
Y																								
Z																								

PLYMOUTH TWP  
ROCK COUNTY WI

IF AVAILABLE  
ROCK COUNTY COORDINATES PREFERRED

North \_\_\_\_\_ Elev. \_\_\_\_\_

East \_\_\_\_\_

Hor. Datum \_\_\_\_\_ Vert. Datum \_\_\_\_\_

LATITUDE \_\_\_\_\_ ELLIPS. HT. \_\_\_\_\_

LONGITUDE \_\_\_\_\_

GPS (X) \_\_\_\_\_ TRAVERSE (X) \_\_\_\_\_

BASED ON THE FOLLOWING CONTROL:

PLACE MONUMENT SYMBOL  AT PROPER LOCATION ON ABOVE INDEX

CORNER MONUMENT

WITNESS MONUMENT

(a)

BEARINGS ARE BASED ON:

FIELD BOOK \_\_\_\_\_ PAGE # \_\_\_\_\_

SHEET 1 OF 3

SHOW A PLAN VIEW DRAWING DEPICTING THE CORNER MONUMENT AND SURROUNDING PHYSICAL FEATURES, INCLUDING THE EXCAVATION AREA AND DEPTH.

PLANNING & ZONING COMMITTEE ADOPTED THE ABOVE FORM ON 12/2/1982

CORNER CODE C-17(1)

PL518

(B) Describe any record evidence, monument evidence, occupational evidence, testimonial evidence or any other material evidence you considered, and whether the monument was found or placed.

- 1833 HARRISON NORTH BET 2 & 3  
132 LEFT MARSH & ENTER DRY PRAIRIE  
2640 QUARTER SEC COR. SET POST & RAISED MOUND  
5306.4 INT. N. BDY AT POST AND MARKED SAME FOR SECS  
2 & 3 LAND ROLLING 1<sup>ST</sup> RATE PRAIRIE
- 1845 PEASE PLY TWP RD REC BK 1 PG 9 BEGINNING AT THE SE  
COR OF SEC 3 T2N R11E AND RUNNING NORTH 2640 TO THE  
QUARTER SECTION POST ON EAST SIDE OF SAID SEC 3; THENCE  
N45W 1864.5' TO THE SW COR OF THE NE 1/4 OF THE NE 1/4 OF  
SEC 3, AFORESAID; THENCE NORTH ON THE WEST SIDE OF NE 1/4  
OF THE NE 1/4 1300.2' TO THE LINE BETWEEN T2 & 3, N OF  
RANGE 11 EAST; THENCE NORTH 5280' BETWEEN THE EAST &  
WEST HALF OF THE EAST HALF OF SEC 34 IN T3N R11E; """"  
SAID RD LAID 66' IN WIDTH. I CERTIFY THAT THE ABOVE IS A  
TRUE COPY OF THE NOTES OF A SURVEY OF SAID ROAD  
VARIATION OF NEEDLE 7-45
- 1855 CHURCH VOL 1 PG 39 STONE 18" LONG 4" THICK LOCUST 4  
S5W 600.27' YELLOW OAK 16 N13W 543. USED CORNER TO  
SUBDIVIDE SECTION 3. SHOWS A DISTANCE OF 2638.35 TO  
THE CENTER OF SECTION 3.
- 1868 LOCKE REMONUMENTATION FIELD NOTES. PLACED CUT  
LIMESTONE.  
PG 37 NORTH BETWEEN SECS 2 & 3 VAR 7-20  
1327.26 LIMESTONE IN CENTER OF HIGHWAY SET BY  
CHURCH.  
2654.52 INTERSECTED 1/4 LINE AT COR. FOUND STAKE &  
STONE & B.T.S TAKEN BY CHURCH. COR. IN ROAD &  
IN LINE OF E & W FENCE. CONTINUED NORTH WITH  
VAR 7-20  
4756.62 CENTER OF SLUICE BRIDGE  
5357.22 INTERSECTED NORTH BOUNDARY 2.64' WEST OF  
COR. FOUND OLD STAKE IN CENTER OF HIGHWAYS  
AND NEARLY IN LINE WITH FENCE RUNNING N. VAR  
CORRECTED 7-16 AUG 28, 1868
- 1877 RUGER VOL 2 PG 234 FOUND STONE MONUMENT. USED TO  
SUBDIVIDE SECTION 2. SHOWS A DISTANCE OF 2697.75 TO  
THE NW CORNER OF SECTION 2 AND 2651.22 TO THE CENTER  
OF SECTION 2.
- 1886 RUGER VOL 2 PG 272 USED TO SUBDIVIDE SECTION 3 BUT  
STATES NOTHING ABOUT THE CORNER. SHOWS A DISTANCE  
OF 2648.42 TO THE CENTER OF SECTION 3.
- 1933 SUNNY VOL 3 PG 235 SHOWS TIES TO CORNER AND STATES  
"THIS 1/4 CORNER IS GONE. NOW GRAVEL PIT FILLED WITH  
ASHES.
- 1958 BATTERMAN VOL 3 PG 235 NOTES: STATES WORK SHOWN IN  
RED DONE BY BATTERMAN IN 1958. SET 1" REFERENCE PIPES.  
DUG AND FOUND 3 X 6 X 12 LIMESTONE 4' DEEP."
- 1972 SHIMEALL VOL 3 PG 235 & CSM 2-219 NOTE STATES THAT  
HE PLACED A 1" PIPE.
- 1986 COMBS MAP #13397 FD PIPE. M.I.
- 1988 BARNES C-17 ACCEPTED FOUND SW REFERENCE PIPE & PIPE  
AT COR. DUG 4X6 6' DEEP HOLE 5' EAST OF PIPE AND  
FOUND NOTHING. REFERENCED PIPE & SHOWS EXCAVATION  
HOLE.
- 1988 BARNES VOL 6 PG 389 N1-03-59W NW COR SEC 2, S1-28-  
53E TO SW COR SEC 2, N89-05-41E 5294.56'
- 1989 WIDOT STH 11 MAP #16698 PROJECT 1704-03-22  
IRON PIPE 243,423.32; 2,223,323.74 N1-03-59E 2695.72  
TO NE COR SEC 3

SHEET 1 OF 3 C-17 (1)

Donald Barnes  
2/02/03

PL518

FD 1" PIPE 4' WEST OF CENTER OF PVMT. USED MY 1988  
OBSERVATIONS

*C) Was the corner restored through acceptance of (1) an obliterated evidence location, or, (2) a found perpetuated location?*

ACCEPTED 1" PIPE THAT WAS STATED AS PLACED OVER CUT L.S.  
WHICH IS 4' DEEP

*D) Describe any material discrepancy between the location of the corner as restored or reestablished and the location of that corner as previously restored or reestablished by distance and direction. Show the discrepancy on the plan view drawing under (a), above. Show the distances between the corner as previously restored or reestablished and (1) the corner as restored or reestablished, and (2) to at least 4 of the witness monuments shown on the drawing in (a), above.*

*(E) Was the corner reestablished through lost corner proportionate methods? If so, show the method, including the directions and distances to other public land survey corners used as evidence or used for proportioning the corner location.*

I, Donald Barnes, hereby certify that the corner location as identified by the corner code index was determined by me under my direction and control and that this U.S. Public Land Survey Monument Record is correct and complete to the best of my knowledge and belief.

Seal

*Donald Barnes*  
2/02/03  
Emboss

SHEET 2 OF 3

CORNER CODE **C-17(1)**  
A-E 7.08 REQUIREMENT

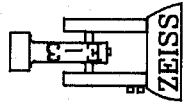
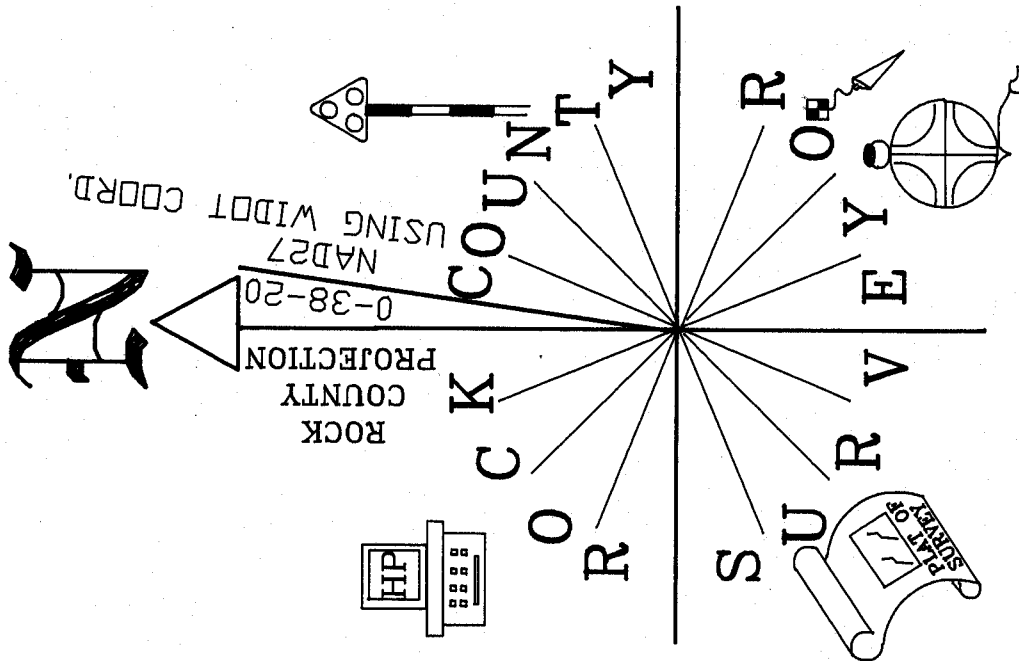
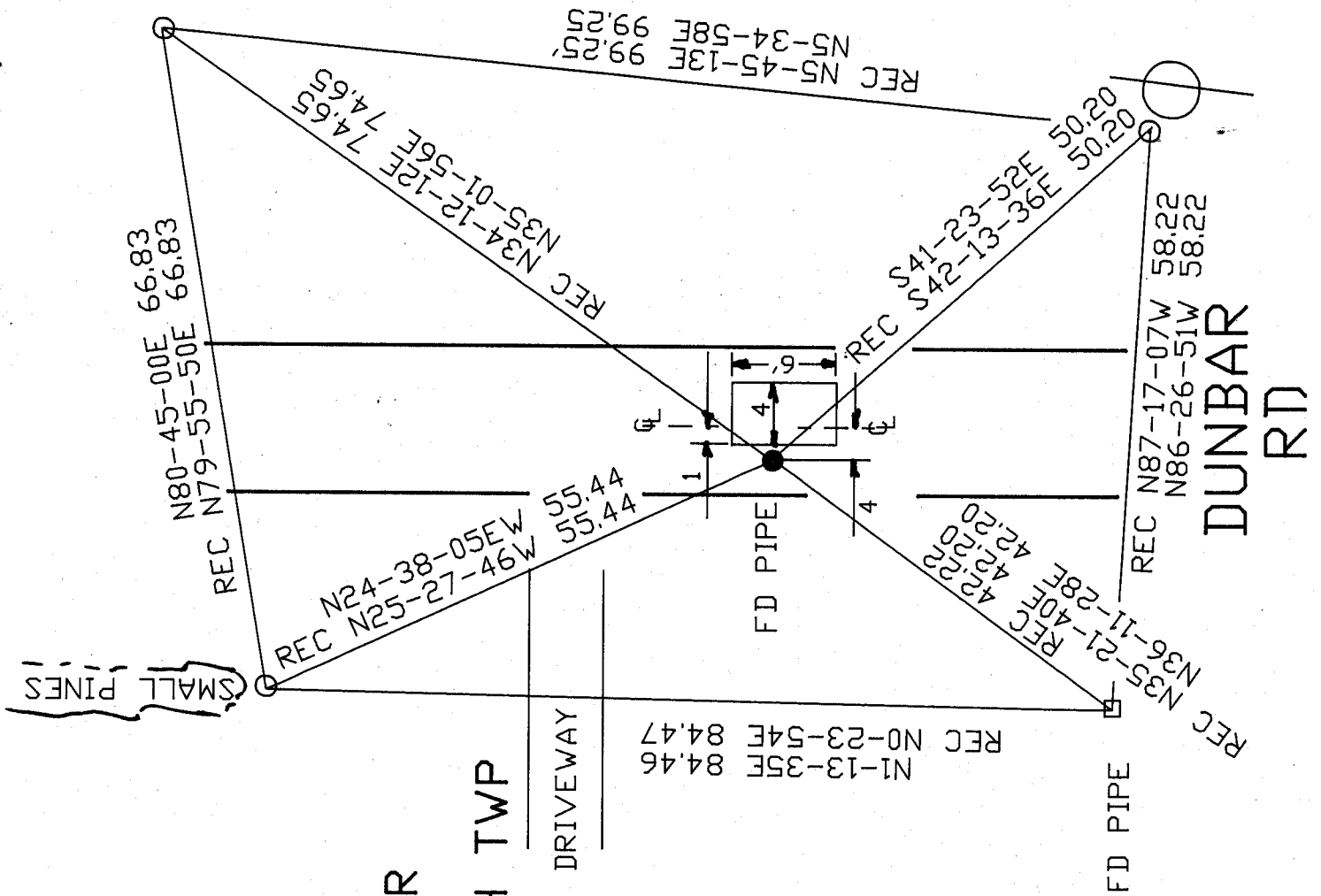
Donald Barnes  
 EMBOSSED  
 SEAL  
 2-3-03

E 1/4 COR  
 SEC 3  
 PLYMOUTH TWP  
 T2N R11E

DRIVEWAY

SHEET 3 OF 3

C-17(1)



OBSERVATION SHEET  
 518 & FB #2 PG 63  
 3/4X24" REROD  
 O / PLASTIC CAP