

# U.S. PUBLIC LAND SURVEY MONUMENT RECORD

For Public Land Survey Corners in:

WI ADMINISTRATIVE CODE A-E 7.08 REQUIREMENT

T. 2 N., R. 11 E

### CORNER CODE INDEX

A	1	2	3	4	5	6	7	8	9	10	11	12	13	14	15	16	17	18	19	20	21	22	23	24	25
B																									
C	6						5					4	◆	3			2							1	
D																									
E																									
F																									
G	1						8																		
H																									
J																									
K																									
L	18						17																		
M																									
N																									
O																									
P	19						20																		
Q																									
R																									
S																									
T	30						29																		
U																									
V																									
W																									
X	31						32																		
Y																									
Z																									

PLYMOUTH TWP  
ROCK COUNTY WI

IF AVAILABLE  
ROCK COUNTY COORDINATES PREFERRED

North \_\_\_\_\_ Elev. \_\_\_\_\_

East \_\_\_\_\_

Hor. Datum \_\_\_\_\_ Vert. Datum \_\_\_\_\_

LATITUDE \_\_\_\_\_ ELLIPS. HT. \_\_\_\_\_

LONGITUDE \_\_\_\_\_

GPS (X) \_\_\_\_\_ TRAVERSE (X) \_\_\_\_\_

BASED ON THE FOLLOWING CONTROL:

PLACE MONUMENT SYMBOL ◆ AT PROPER LOCATION ON ABOVE INDEX

◆ CORNER MONUMENT

○ WITNESS MONUMENT

(a)

BEARINGS ARE BASED ON:

OBSERVATION Sheet 704

FIELD BOOK \_\_\_\_\_ PAGE # \_\_\_\_\_

SHEET 1 OF 2

SHOW A PLAN VIEW DRAWING DEPICTING THE CORNER MONUMENT AND SURROUNDING PHYSICAL FEATURES, INCLUDING THE EXCAVATION AREA AND DEPTH.

PLANNING & ZONING COMMITTEE ADOPTED THE ABOVE FORM ON 12/2/1982

CORNER CODE C-13(1)

PL517

(B) Describe any record evidence, monument evidence, occupational evidence, testimonial evidence or any other material evidence you considered, and whether the monument was found or placed.

1833 HARRISON NORTH BET 3 & 4  
2574 LEFT MARSH 7 ENTER PRAIRIE  
2640 QUARTER SEC COR. SET A POST & RAISED MOUND  
5214 INT. N. BDY 26.4' E OF P. SET POST & RAISED  
MOUND FOR COR TO SECS 3 & 4. LAND 1<sup>ST</sup> 1/2  
LEVEL & WET 3<sup>RD</sup> RATE- MARSH- NORTH 1/2 ROLLING  
1<sup>ST</sup> RATE PRAIRIE DEC 26<sup>TH</sup> 1833  
1847 TWP RD REC BK 1 PG 21 BEGINNING AT THE NW COR OF SEC  
3 AND 4, 9 AND 10, 15 AND 16, 21 AND 22 TO THE SW COR  
OF SEC 22. SAID RD IS 66' IN WIDTH  
1855 CHURCH VOL 1 PG 39 USED CORNER TO SUBDIVIDE  
SECTION 3. STATES NOTHING ABOUT CORNER.  
1866 LOCKE VOL 1 PG 277 & MAP #4317 FOUND STAKE. USED  
CORNER TO SUBDIVIDE SECTION 4.  
1868 LOCKE REMONUMENTATION FIELD NOTES. PLACED CUT  
LIMESTONE.  
PG 47 NORTH BETWEEN SECS 3 AND 4 VAR 7-25  
2655.84 INTERSECTED 1/4 LINE 3.96' WEST OF COR. FOUND  
POST IN MOUND 6 INCHES SOUTH TO COR POST TO  
FENCES VAR CORRECTED 7-20  
CONTINUED NORTH FROM 1/4 COR WITH VAR 7-20  
5243.04 INTERSECTED NORTH BOUNDARY 11.88' EAST OF  
COR. CORNERS FOR TOWN 2 AND 3 BOTH LOST.  
SET COR FOR TOWN 3 MIDWAY AND ON A RIGHT  
LINE BETWEEN THE 1/4 COR 1/2 MILE EAST AND WEST  
AND SET THE COR. FOR TOWN 2 2.64? 26.4'? EAST  
OF COR. FOR TOWN 3 COR IN CENTER OF HIGHWAY  
VAR CORRECTED 7-35 SEPT. 3 1868  
1886 RUGER VOL 2 PG 272 USED CORNER TO SUBDIVIDE  
SECTION 3. STATES NOTHING ABOUT CORNER.  
1933 SUNNY VOL 3 PG 235 CORNER DESTROYED 6" X 6"  
MONUMENT FOUND LYING ON TOP OF GROUND.  
1988 LEE CSM 13-216 FD CUT L.S.  
1988 BARNES C-13 FD CUT LIMESTONE 39" LONG. 1.5' ABOVE  
GROUND AND LEANING. VERY LARGE HH ON NORTH & SOUTH.  
STRAIGHTENED STONE AND PLACED MAGNET & WHITE POST BY  
STONE. REFERENCED SAME.  
1988 BARNES VOL 6 PG 386 S1-13-51E 2656.82 TO SE COR SEC 4  
NB9-42-52W 2670.07 TO CENTER SEC 4, & N1-27-23W  
2587.09 TO NE COR SEC 4.  
1989 WIDOT STH 11 MAP #16698 PROJECT 1704-03-22 CUT  
LIMESTONE 243,430.00; 2,218,040.52 MAP #16698  
1995 LUENBERGER CSM VOL 18 PG 425 CUT L.S. ANGLE 90-16-04  
@ NE COR SEC 4 FROM E 1/4 COR SEC 4 TO N 1/4 COR SEC 4

C) Was the corner restored through acceptance of (1) an obliterated evidence location, or, (2) a found perpetuated location?

ACCEPTED FOUND CUT LIMESTONE. USED MY 1988 OBSERVATIONS

I, Donald Barnes, hereby certify that the corner location as identified by the corner code index was determined by me under my direction and control and that this U.S. Public Land Survey Monument Record is correct and complete to the best of my knowledge and belief.

Seal

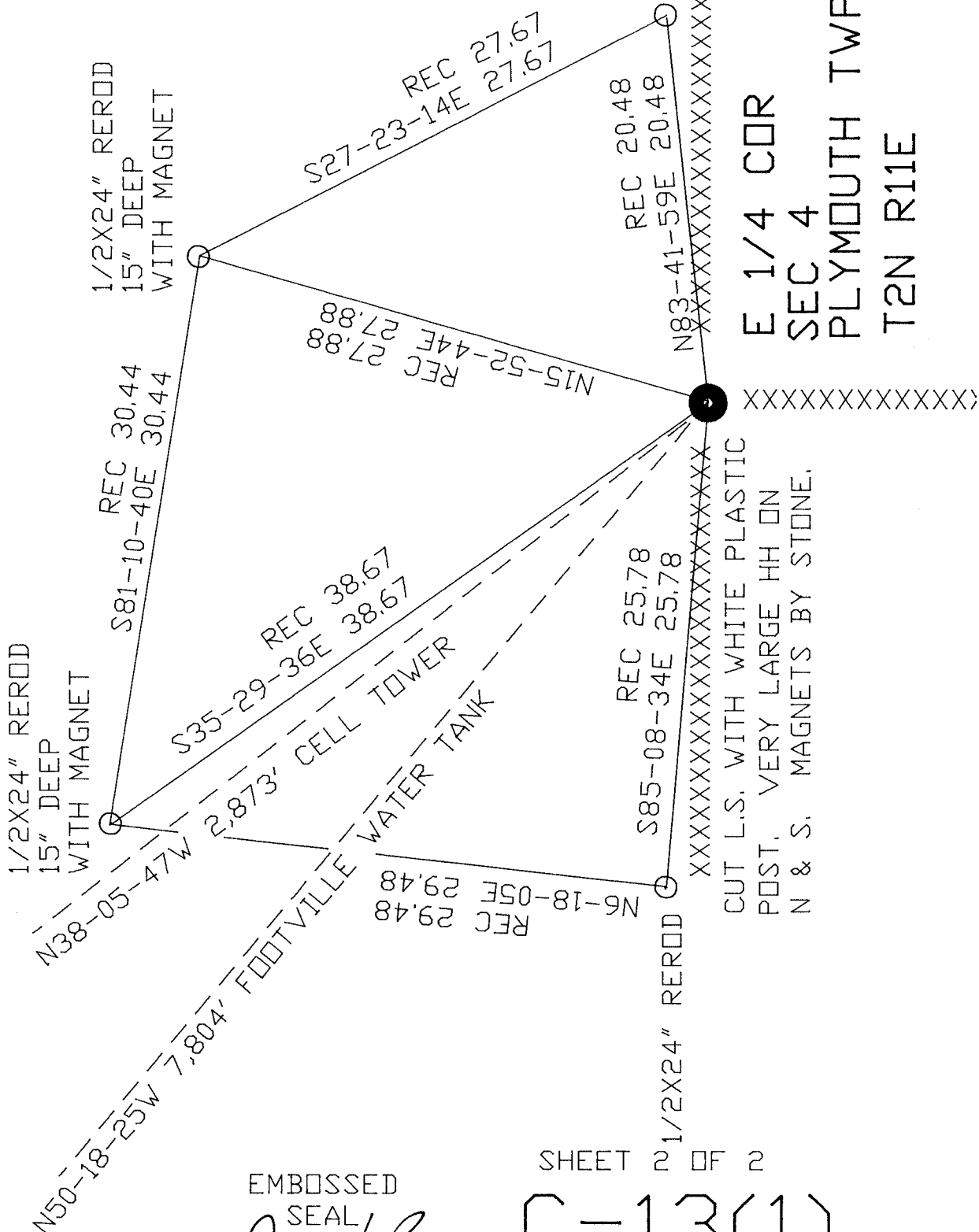
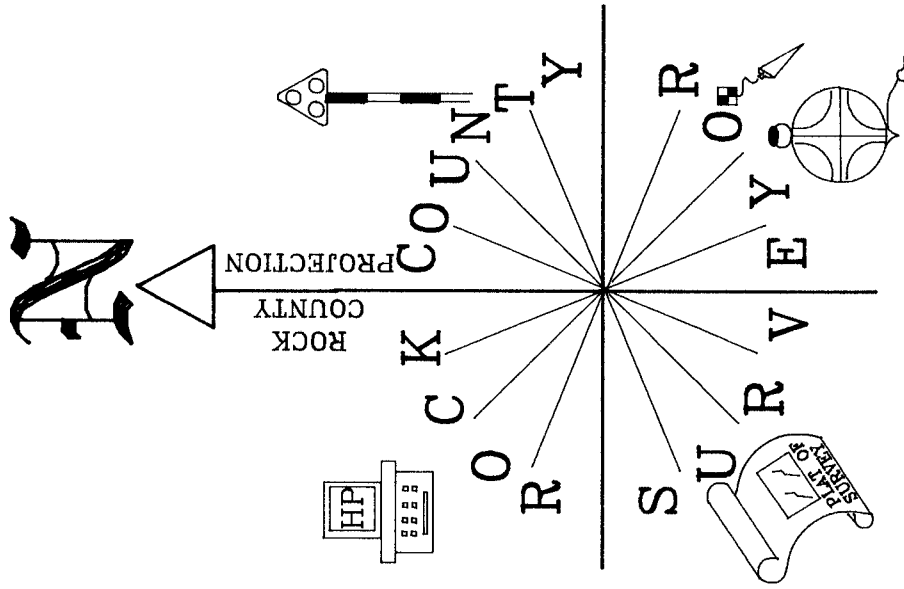
*Donald Barnes*

2-17-03

Emboss

SHEET 1 OF 2

CORNER CODE **C-13(1)**  
A-E 7.08 REQUIREMENT



E 1/4 CDR  
 SEC 4  
 PLYMOUTH TWP  
 T2N R11E

OBSERVATION SHEET #704  
 BK #2 PG 70 & 72

EMBOSSED  
 SEAL

*Ronald Barnes*

2-17-03

SHEET 2 OF 2

C-13(1)