

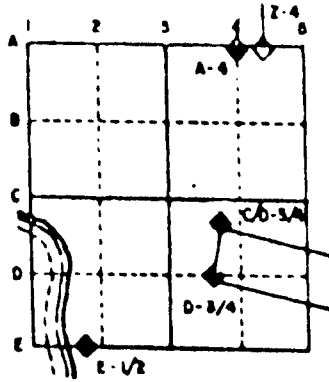
U.S. PUBLIC LAND SURVEY MONUMENT RECORD

For Public Land Survey Corners in the  
 T. 2 N., R. 11 E.  
 CORNER CODE INDEX

	1	2	3	4	5	6	7	8	9	10	11	12	13	14	15	16	17	18	19	20	21	22	23	24	25	
A																										
B																										
C	6	5	4	3	2																					
D																										
E																										
F																										
G	7	8	9	10	11	12																				
H																										
I																										
J																										
K																										
L	16	17	18	15	14	13																				
M																										
N																										
O																										
P	19	20	21	22	23	24																				
Q																										
R																										
S																										
T	30	29	28	27	26	25																				
U																										
V																										
W																										
X																										
Y	31	32	33	34	35	36																				
Z																										

PLACE MONUMENT SYMBOL (◆) AT PROPER LOCATION ON ABOVE INDEX

EXAMPLE



PLYMOUTH TWP  
 ROCK COUNTY WI

IF AVAILABLE  
 STATE PLANE COORDINATES

North (Y) \_\_\_\_\_ Elevation (Z) \_\_\_\_\_  
 East (X) \_\_\_\_\_ Zone \_\_\_\_\_  
 Horizontal Datum \_\_\_\_\_ Vertical Datum \_\_\_\_\_

◆ CORNER MONUMENT

○ WITNESS MONUMENT



PL506

**(B) Describe any record evidence, monument evidence, occupational evidence, testimonial evidence or any other material evidence you considered, and whether the monument was found or placed.**

1866 LOCKE VOL 1 PG 277 FOUND CORNER AS SET BY SELF. USED TO SUBDIVIDE SECTION 4.

1868 LOCKE REMONUMENTATION FIELD NOTES. SET N 1/4 COR FOR SEC 4 33.00' EAST OF THE CORNER FOR TOWN 3. 50 LINKS BEING 1/2 OF THE SUM OF THE MEAN BETWEEN THE "JOG" AT SECTION CORNERS. CALLS FOR 2659.31 VAR 6-25 TO THE NW COR SEC 4 & 2651.88 VAR 6-44 TO THE NE COR SEC 4. INSTALLED CUT LIMESTONE.

1934 SUNNY VOL 3 PG 236 FOUND IRON PIPE IN CONCRETE PAVEMENT IN LINE WITH FENCE TO SOUTH. SET BY ELY. 2.8' N OF CENTER OF CONCRETE PAVEMENT. 2555.6 TO INTERSECTION OF FENCES AT THE CENTER OF SEC 4.

1988 BARNES A11(2) FOUND PIPE IN MONUMENT BOX.

SET 3/4 X 24 REROD ON LINE WITH REROD AT THE S 1/4 COR SEC 33 AND THE ERRONEOUS CORNER THAT LOCKE SET AT THE N 1/4 COR SEC 4. REROD IS MIDWAY BETWEEN THE NE & NW CORNERS OF SEC 4. I DID NOT ACCEPT THE 1" PIPE IN THE MONUMENT BOX. LOCKE'S METHOD OF USING THE JOG DISTANCES TO DETERMINE THE DISTANCE FROM THE S 1/4 COR OF SEC 33 WAS NOT A FEDERAL OR STATE LAW AT THAT TIME. THE LAWS STATED THE CORNER WAS TO BE PLACED EQUAL DISTANCE BETWEEN THE NE & NW CORNERS OF SEC 4. ON PAGE 230 OF TOM SPRAGUE'S MANUAL OF STATE & FEDERAL LAWS FOR ESTABLISHING AND PERPETUATING THE ORIGINAL GOVERNMENT SURVEY IN WISCONSIN, THE PLACEMENT OF THE N 1/4 CORNER OF SEC 4 FOR THE GENERAL LAWS OF WISCONSIN, 1860, CHAPTER 323, SECTION 2 IS SHOWN. THE DIAGRAM SHOWS THE N 1/4 CORNER BEING MID WAY BETWEEN THE NE & NW CORNERS OF SEC 4. THE GENERAL LAWS OF WISCONSIN, 1862 AND 1867 DID NOT CHANGE THE METHOD. USED LOCKE'S POSITION TO ESTABLISH THE S 1/4 COR OF SEC 33 CENTER TWP.

**C) Was the corner restored through acceptance of (1) an obliterated evidence location, or, (2) a found perpetuated location?**

NO

**D) Describe any material discrepancy between the location of the corner as restored or reestablished and the location of that corner as previously restored or reestablished by distance and direction. Show the discrepancy on the plan view drawing under (a), above. Show the distances between the corner as previously restored or reestablished and (1) the corner as restored or reestablished, and (2) to at least 4 of the witness monuments shown on the drawing in (a), above.**

**(E) Was the corner reestablished through lost corner proportionate methods? If so, show the method, including the directions and distances to other public land survey corners used as evidence or used for proportioning the corner location.**

YES

I, Donald Barnes, hereby certify that the corner points as identified by the corner code index were, in a field survey on, April 27, 1995, established, re-established, monumented, re-monumented, recovered or restored as expressed below and in conformance with the regulations and rules as required in the current manual of survey instructions of the United States Department of Interior, Bureau of Land Management.

COUNTY SURVEYOR FILING DATA

seal

Date of computer entry \_\_\_\_\_

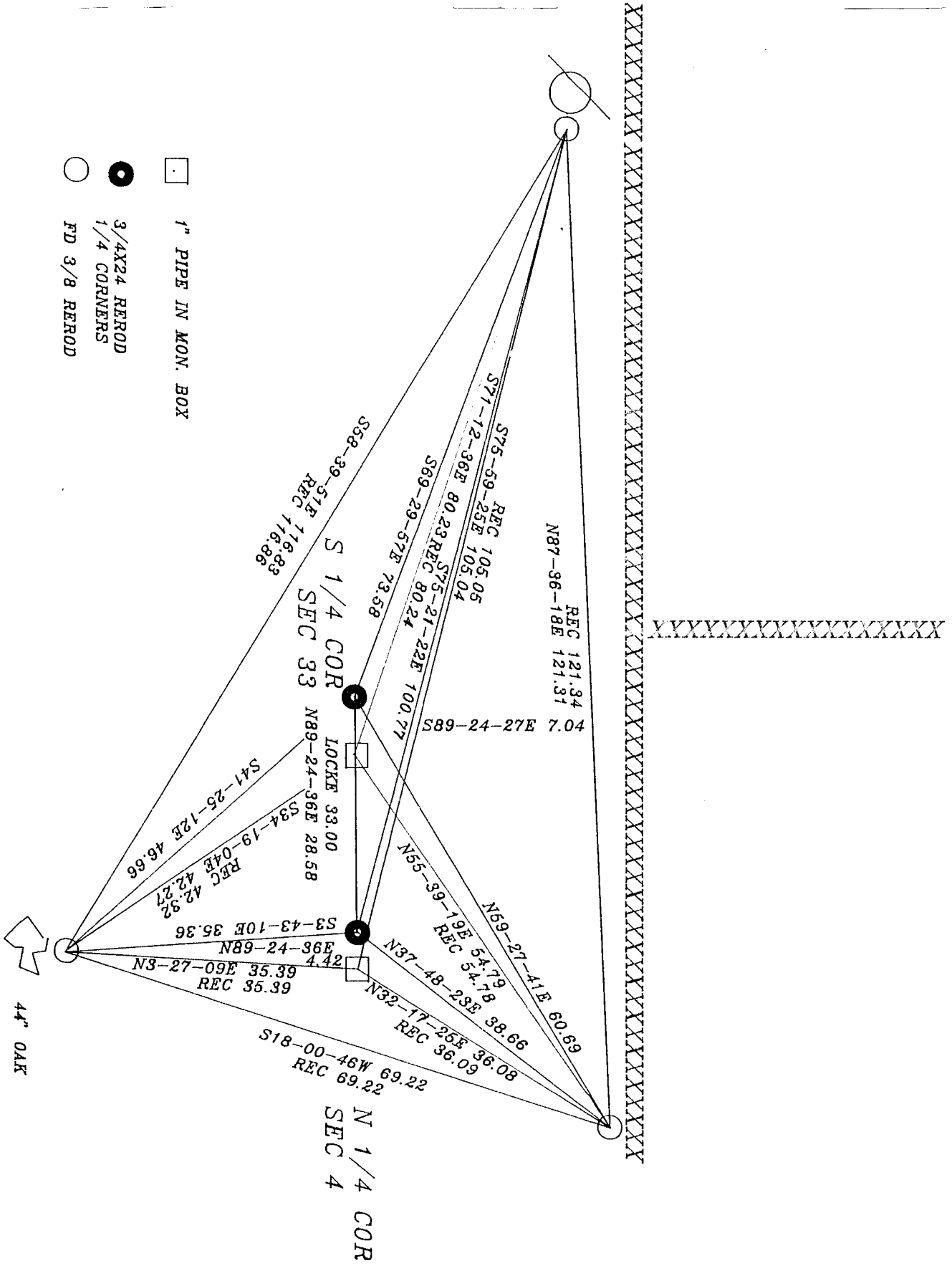
Date microfilmed \_\_\_\_\_

Number of included sheets 2  
CORNER CODE

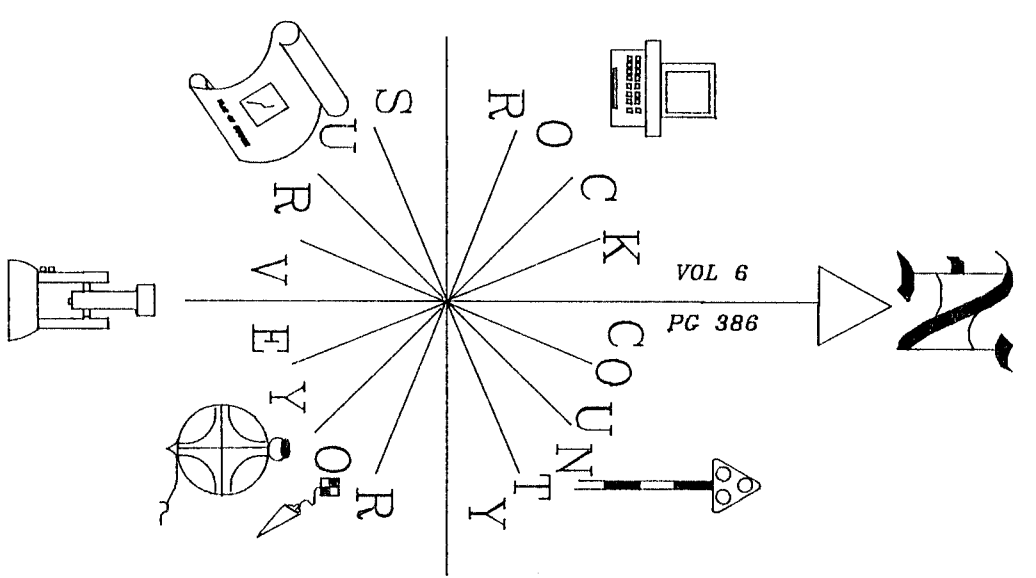
*Donald Barnes APR 28 1995*

EMBOSS LAND SURVEYOR SEAL

A11(3)



- 1" PIPE IN MON. BOX
- 3/4X24 REROD
- 1/4 CORNERS
- FD 3/8 REROD

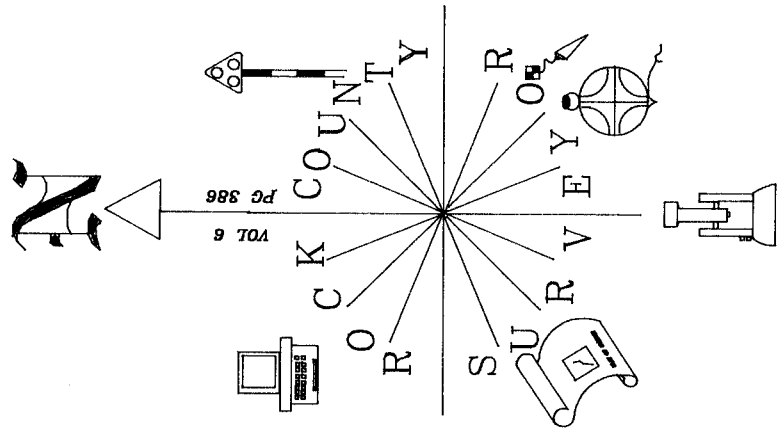


FB #3 PG 38  
 OBSERVATION SHEETS

*Dwight Barnes*  
 Apr 28, 1995

*Donald Band*  
 Apr 28, 1995

FB #3 PG 38  
 OBSERVATION SHEETS



N88-26-25E 39.57  
 BARNES 1988 39.57  
 ORIG 39.6  
 SUNNY 1934 39.6  
 FD ALUM.

N89-23-44E 2666.41  
 ORIG 2640  
 SEC 33

LOCKE 1868 2659.31 V6-25  
 N89-24-36E 2655.41  
 OWEN 1913 2661.0  
 FD ALUM.

LOCKE 33  
 N89-24-36E 28.58  
 N89-24-36E 28.58  
 SET 3/4 REROD

LOCKE 1868 2651.88 V6-44  
 N89-03-56E 2655.41  
 SEC 4

LOCKE 1868 2658.48  
 N89-04-15E 2657.57  
 ORIG 2640  
 USED REF. TLES

LOCKE 1868 26.4  
 ORIG 26.4  
 N88-55-44E 26.40  
 USED REF. TLES

N88-26-25E 39.57  
 BARNES 1988 39.57  
 ORIG 39.6  
 SUNNY 1934 39.6  
 FD ALUM.

N89-23-56E 2673.44  
 ORIG 2640  
 SEC 33

REC N89-23-54E 2673.45  
 REC N89-24-32E 2659.86  
 LOCKE 1868 2659.31 V6-25  
 OWEN 1913 2661.0  
 N89-24-36E 2659.83  
 FD ALUM.

LOCKE 33 MON BOX  
 26.26  
 LOCKE 1868 2651.88 V6-44  
 REC N89-03-54E 2651.06  
 N89-03-54E 2650.99  
 SEC 4

LOCKE 1868 26.4  
 ORIG 26.4  
 N88-55-44E 26.40  
 USED REF. TLES