

U.S. PUBLIC LAND SURVEY MONUMENT RECORD

For Public Land Survey Corners in:

WI ADMINISTRATIVE CODE A-E 7.08 REQUIREMENT

T. 2 N., R. 11 E

CORNER CODE INDEX

| | | | | | | | | | | | | | | | | | | | | | | | | |
|---|----|----|---|---|---|---|---|---|----|----|----|----|----|----|----|----|----|----|----|----|----|----|----|----|
| A | 2 | 3 | 4 | 5 | 6 | 7 | 8 | 9 | 10 | 11 | 12 | 13 | 14 | 15 | 16 | 17 | 18 | 19 | 20 | 21 | 22 | 23 | 24 | 25 |
| B | 6 | 5 | | | | | | | | | | | | | | | | | | | | | | |
| C | | | | | | | | | | | | | | | | | | | | | | | | |
| D | | | | | | | | | | | | | | | | | | | | | | | | |
| E | | | | | | | | | | | | | | | | | | | | | | | | |
| F | 1 | 8 | | | | | | | | | | | | | | | | | | | | | | |
| G | | | | | | | | | | | | | | | | | | | | | | | | |
| H | | | | | | | | | | | | | | | | | | | | | | | | |
| I | | | | | | | | | | | | | | | | | | | | | | | | |
| J | | | | | | | | | | | | | | | | | | | | | | | | |
| K | 18 | 17 | | | | | | | | | | | | | | | | | | | | | | |
| L | | | | | | | | | | | | | | | | | | | | | | | | |
| M | | | | | | | | | | | | | | | | | | | | | | | | |
| N | | | | | | | | | | | | | | | | | | | | | | | | |
| O | | | | | | | | | | | | | | | | | | | | | | | | |
| P | 19 | 20 | | | | | | | | | | | | | | | | | | | | | | |
| Q | | | | | | | | | | | | | | | | | | | | | | | | |
| R | | | | | | | | | | | | | | | | | | | | | | | | |
| S | 30 | 29 | | | | | | | | | | | | | | | | | | | | | | |
| T | | | | | | | | | | | | | | | | | | | | | | | | |
| U | | | | | | | | | | | | | | | | | | | | | | | | |
| V | | | | | | | | | | | | | | | | | | | | | | | | |
| W | | | | | | | | | | | | | | | | | | | | | | | | |
| X | 31 | 32 | | | | | | | | | | | | | | | | | | | | | | |
| Y | | | | | | | | | | | | | | | | | | | | | | | | |
| Z | | | | | | | | | | | | | | | | | | | | | | | | |

PLYMOUTH TWP
ROCK COUNTY WI

IF AVAILABLE
ROCK COUNTY COORDINATES PREFERRED

North _____ Elev. _____

East _____

Hor. Datum _____ Vert. Datum _____

LATITUDE _____ ELLIPS. HT. _____

LONGITUDE _____

GPS (X) _____ TRAVERSE (X) _____

BASED ON THE FOLLOWING CONTROL:

PLACE MONUMENT SYMBOL AT PROPER LOCATION ON ABOVE INDEX

CORNER MONUMENT

WITNESS MONUMENT

(a)

BEARINGS ARE BASED ON:

OBSERVATION SHEET 273, 275, 276, 505
2008, 277

FIELD BOOK _____ PAGE # _____

SHEET 1 OF 3

SHOW A PLAN VIEW DRAWING DEPICTING THE CORNER MONUMENT AND SURROUNDING PHYSICAL FEATURES, INCLUDING THE EXCAVATION AREA AND DEPTH.

PLANNING & ZONING COMMITTEE ADOPTED THE ABOVE FORM ON 12/2/1982

CORNER CODE A-9(1)

PL505

(B) Describe any record evidence, monument evidence, occupational evidence, testimonial evidence or any other material evidence you considered, and whether the monument was found or placed.

- 1833 MULLETT WEST ON SOUTH SIDE SECTION 32
2640 SET QUARTER SECTION POST IN PRAIRIE AND MADE MOUND.
5280 SET POST CORNER SECTIONS 31 & 32 IN PRAIRIE AND MADE MOUND LAND LEVEL FIRST RATE PRAIRIE
- 1833 MULLETT WEST ON SOUTH SIDE SECTION 33 T3N R11E
2640 SET QUARTER SECTION POST IN PRAIRIES AND MADE MOUND
5280 SET POST CORNERS SECTIONS 32 & 33 IN PRAIRIE AND MADE MOUND. LAND & O SAME.
- 1833 HARRISON NORTH BET 4 & 5
2221.56 BROOK 11.88' CRS S.E.
2640 QUARTER SEC CRS NEAR N. EDGE OF MARSH {BURR O 36 N21E 263' BURR O 34 N11W 396' BURR O 36 BURR O 34} MARKED
2970 LEFT MARSH & ENTER ? & TIMBER
3234 LEFT TIMBER & ENTER PRAIRIE
5186.94 INT. N. BDY 39.6' E OF P. SET A POST & RAISED A MOUND FOR COR SEC 4 & 5
- 1865 LOCKE VOL 1 PG 234 FOUND REMAINS OF OLD STAKE. SET ROUND HARDHEAD 13 X 12 X 12.
- 1868 LOCKE REMONUMENTION FIELD NOTES. PLACED CUT LIMESTONE.

PG 49 WEST ON NORTH LINE SEC 4 VAR 7

- 503.58 STONE DULVERT
- 1256.64 CENTER SLUIDE BRIDGE 3.3' WIDE
- 2684.88 INTERSECTED 1/4 LINE FOR TOWN 3 12.11' SOUTH OF COR FOUND OLD STAKE IN CENTER OF HIGHWAY AND NEARLY IN LINE WITH FENCES RUNNING N AND S.
- 2651.88 SET 1/4 COR FOR SEC 4 33' EAST OF COR. FOR TOWN 3 33' BEING 1/2 OF THE SUM OF THE MEAN BETWEEN THE "JOBS" AT THE SEC. CORNERS. VAR CORRECTED 6-44

CONTINUED WEST FROM 1/4 COR WITH VAR 7

- 5311.18 INTERSECTED WEST BOUNDARY 26.90' SOUTH OF COR. FOUND STONE SET BY SELF. (SEE CO. SURVEYORS RECORD SEC 4) VAR CORRECTED 6-25 MARKED 1/4 MONUMENT WITH FIGURE 4 ON SOUTH FACE. SEPT 3, 1868

PG 52 WEST ON NORTH LINE SEC 5 VAR 7-35

- 1966.14 R.R
- 2699.4 INTERSECTED 1/4 LINE FOR TOWN 3 20.79' SOUTH OF COR. FOUND STAKE SET BY SELF. (SEE CO 8. RECORD) IN SHOULDER OF DITCH FENCE. VAR CORRECTED 7-08
- 2679.6 SET 1/4 COR T2 19.8' EAST OF COR. FOR T3 19.8' BEING 1/2 OF THE "JOB" AT SEC. CORNERS COR 11.88' N OF FENCE

CONTINUED WEST FROM 1/4 COR WITH VAR 6-53

- 5357.22 INTERSECTED WEST BOUNDARY AT COR. FOUND COR. AS SET BY SELF. SEE RECORD COUNTY SURVEYOR. COR. ON DAM 3.63' WEST OF FENCE AND 14.85' N OF LAST POST OF AND IN LINE WITH FENCE RUNNING S. MARKED 1/4 MONUMENT WITH FIGURE 5 ON SOUTH FACE. SEPT 4 1868

PG 51 NORTH BETWEEN SECS 4 & 5 VAR 7-05

- 1324.62 COR. POST OF FENCE ON SOD FENCE
- 1864.5 SOUTH BANK BASS CREEK
- 1881 NORTH BANK BASS CREEK
- 2601.06 INTERSECTED 1/4 LINE AT COR. FOUND COR AS SET BY SELF. (SEE CO. SURVYORS RECORD) 1 FT EAST OF N AND S FENCE AND 5.94' SOUTH OF E AND W FENCE.

Ronald Barnes
1/15/03

PL505

- 2984.52 CENTER SLUICE BRIDGE 2.64' WIDE
3523.08 CENTER MAIN TRACK OF RR
4012.8 CENTER OF BRIDGE 6.6' WIDE
5158.89 INTERSECTED NORTH BOUNDARY 7.26' WEST OF
COR VAR CORRECTED 6-56 SEPT 4 1868
1913 OWEN VOL 6 PG 386 & MAP 6306 EAST 2661.0 TO N ¼ COR
SEC 4, 80-14W 2559.7 TO W ¼ COR SEC 4, & WEST 2681.8
TO N ¼ COR SEC 5.
1934 SUNNY VOL 3 PG 236 SET A" X 36"
IRON PIPE MON. MAP SHOWS THAT THE CORNER IS .4'
SOUTH OF SOUTH EDGE OF CONCRETE HIGHWAY. SHOWS A
DISTANCE OF TO THE SOUTHWEST CORNER OF
SECTION 33 CENTER TOWNSHIP.
1966 BATTERMAN JR. VOL 4 PG 255. SHOWS A DISTANCE OF
2558.26 TO THE WEST QUARTER CORNER OF SECTION 4 AND
A DISTANCE OF 2680.76 TO THE NORTH QUARTER CORNER
OF SECTION 5. ALSO SHOWS AN ANGLE OF 89°42' FROM
THE WEST QUARTER CORNER OF SECTION 4 TO THE NORTH
QUARTER CORNER OF SECTION 5 AT THE NW CORNER OF
SECTION 4.
1966 THOM MAP#7567 FD IRON PIN. 889-28-45W 2680.76 TO N
¼ COR SEC 5 & 80-31-15E 2558.26 TO E ¼ COR SEC 5
1980 BARNES VOL 5 PG 565 FOUND 3/8" © 18" IRON PIN, 30" DEEP
FOUND 2", IRON PIPE. PLACED ALUMINUM MONUMENT.
1988 BARNES A-9 ALUM MON 39.57' EAST OF ALUM MON AT SE
COR SEC 32 CENTER TWP. REFERENCED SAME.
1988 BARNES VOL 6 PG 386 39.57 EAST OF SEC 32 CENTER
TWP. 2659.86 TO N ¼ COR SEC 4. 2673.45 FROM SW COR
SEC 33 TO S ¼ COR SEC 33. 39.57 EAST OF SW COR SEC
33.
1999 KREBS MAP #7569 FD ALUM. MON. 888-55-09W 2682.89 TO
N ¼ COR SEC 5 & 80-46-58E 2558.53 TO E ¼ COR SEC 5

FD ALUM. MON. 0.1 DEEP. ON LINE WITH CENTER OF PVMT TO
SOUTH; ON LINE EAST CURB PROJECTED FROM NORTH; SOUTH OF
E/W CENTER OF PVMT. FD REFERENCE TIES.

C) Was the corner restored through acceptance of (1) an obliterated evidence location, or, (2) a found perpetuated location?

ACCEPTED FOUND ALUM. MON.

D) Describe any material discrepancy between the location of the corner as restored or reestablished and the location of that corner as previously restored or reestablished by distance and direction. Show the discrepancy on the plan view drawing under (a), above. Show the distances between the corner as previously restored or reestablished and (1) the corner as restored or reestablished, and (2) to at least 4 of the witness monuments shown on the drawing in (a), above.

(E) Was the corner reestablished through lost corner proportionate methods? If so, show the method, including the directions and distances to other public land survey corners used as evidence or used for proportioning the corner location.

I, Donald Barnes, hereby certify that the corner location as identified by the corner code index was determined by me under my direction and control and that this U.S. Public Land Survey Monument Record is correct and complete to the best of my knowledge and belief.

Seal

Donald
Barnes
Embloss

1/15/03

SHEET 2 OF 3

CORNER CODE

A-9(1)

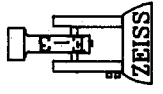
A-E 7.08 REQUIREMENT

A

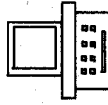
ROCK COUNTY PROJECTION

ROCK COUNTY SURVEY

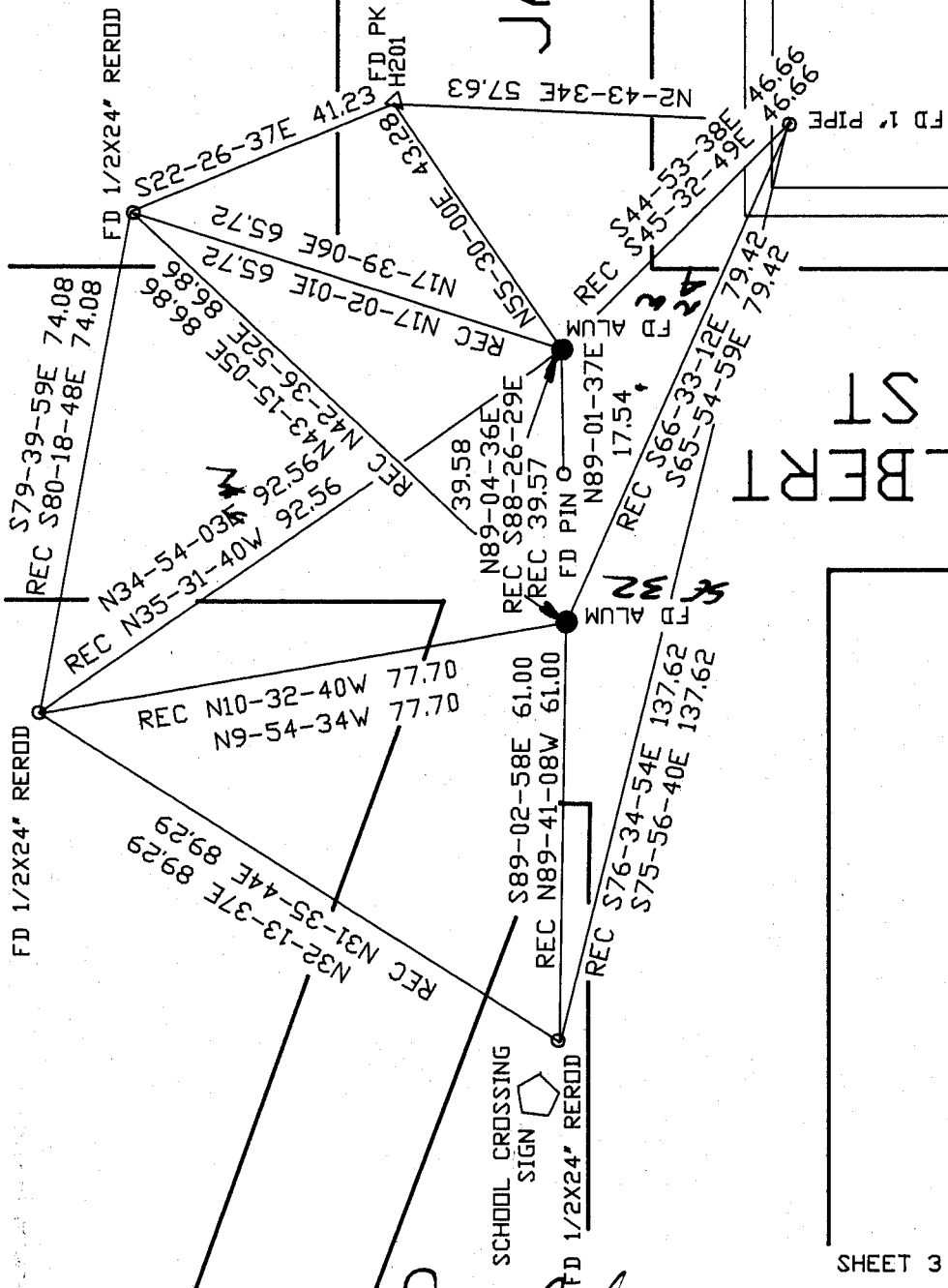
JANESVILLE ROCK COUNTY SURVEY



NOT TO SCALE



JANESVILLE ROCK COUNTY SURVEY



Daniel Barnes
 EMBOSSED SEAL
 1-15/03

SHEET 3 OF 3

A-9(1)