

# U.S. PUBLIC LAND SURVEY MONUMENT RECORD

For Public Land Survey Corners in:

WI ADMINISTRATIVE CODE A-E 7.08 REQUIREMENT

T. 2 N., R. 11 E

### CORNER CODE INDEX

	1	2	3	4	5	6	7	8	9	10	11	12	13	14	15	16	17	18	19	20	21	22	23	24	25
A																									
B																									
C	6																								
D		5																							
E			4																						
F				3																					
G	1																								
H		8																							
I			9																						
J				10																					
K					11																				
L	18					16																			
M							15																		
N								14																	
O									13																
P										20															
Q											21														
R												22													
S													23												
T														24											
U															27										
V																28									
W																	29								
X																		30							
Y																			31						
Z																				32					
																					33				
																						34			
																							35		
																								36	

PLYMOUTH TWP  
ROCK COUNTY WI

IF AVAILABLE  
ROCK COUNTY COORDINATES PERFERED

North \_\_\_\_\_ Elev. \_\_\_\_\_

East \_\_\_\_\_

Hor. Datum \_\_\_\_\_ Vert. Datum \_\_\_\_\_

LATITUDE \_\_\_\_\_ ELLIPS. HT. \_\_\_\_\_

LONGITUDE \_\_\_\_\_

GPS (X) \_\_\_\_\_ TRAVERSE (X) \_\_\_\_\_

BASED ON THE FOLLOWING CONTROL:  
\_\_\_\_\_

PLACE MONUMENT SYMBOL  AT PROPER LOCATION ON ABOVE INDEX

CORNER MONUMENT

WITNESS MONUMENT

(a)

BEARINGS ARE BASED ON: \_\_\_\_\_

OBSERVATION sheets 7097, 7100

FIELD BOOK \_\_\_\_\_ PAGE # \_\_\_\_\_

SHEET 1 OF 4

SHOW A PLAN VIEW DRAWING DEPICTING THE CORNER MONUMENT AND SURROUNDING PHYSICAL FEATURES, INCLUDING THE EXCAVATION AREA AND DEPTH.

PLANNING & ZONING COMMITTEE ADOPTED THE ABOVE FORM ON 12/2/1982

CORNER CODE A-17(3)

PL509

(B) Describe any record evidence, monument evidence, occupational evidence, testimonial evidence or any other material evidence you considered, and whether the monument was found or placed.

1833 MULLETT

WEST ON SOUTH SIDE SECTION 34

2640 SET QUARTER SECTION POST IN PRAIRIE AND  
MADE MOUND

5280 SET POST CORNER SECTIONS 33 & 34 IN PRAIRIE  
AND MADE MOUND LAND ROLLING PRAIRIE  
SECOND RATE.

WEST ON SOUTH SIDE SECTIONS 34 & 35 {35}

1518 LEAVE PRAIRIE TO ENTER MARSH

2442 STREAM 6.6' C SOUTH

2508 LEAVE MARSH AND ENTER PRAIRIE

2640 SET QUARTER SECTION POST IN PRAIRIE AND MADE  
MOUND

5280 SET POST CORNERS SECTIONS 34 & 35 IN PRAIRIE AND  
MADE MOUND. LAND ROLLING PRAIRIE SECOND RATE. BY  
OBSERVATION VAR 7-45E

1833 HARRISON NORTH BET 2 & 3

132 LEFT MARSH & ENTER DRY PRAIRIE

2640 QUARTER SEC COR. SET POST & RAISED MOUND

5306.4 INT. N. BDY AT POST AND MARKED SAME FOR SECS 2 & 3  
LAND ROLLING 1<sup>ST</sup> RATE PRAIRIE

1847 TWP RD RECORDS BK 1 PG 18 "BEGINNING AT THE SOUTHEAST  
COR OF SEC 3, T2N R11E AND RUNNING NORTH ON THE EAST LINE  
OF SEC TO THE NORTHEAST COR OF SAID SEC 3 AND FROM THE SW  
COR OF THE EAST HALF OF THE EAST HALF OF SEC 34 T3N R11E;  
THENCE NORTH ON THE WEST LINE OF SAID SEC 34 TO THE NORTH  
LINE OF SAID SEC 34. SAID RD IS FOUR RODS IN WIDTH.

1866 LOCKE REMONUMENTATION

PG 38 EAST ON NORTH LINE SEC 2 VAR 5-45

505.56 CENTER SLUICE BRIDGE

2657.49 INTERSECTED 1/4 LINE FOR TOWN 3 7.26' NORTH OF COR.  
FOUND STONE WITH STAKE SET BY ANDREW  
CODDINGTON IN OLD MOUND. COR. IN CENTER OF  
HIGHWAY AND IN LINE OF FENCE RUNNING N. VAR  
CORRECTED 5-36

CONTINUED EAST FROM 1/4 COR OF T3 WITH VAR 7-12

3034.02 CENTER OF BRIDGE 33' WIDE OVER CREEK.

5313.66 INTERSECTED EAST BOUNDARY AT COR.

5316.96 INTERSECTED EAST BOUNDARY OF SEC 35 T3N AT COR.

2656.83 SET 1/4 COR 0.66' WEST OF 1/4 COR FOR T3N  
MONUMENT MARKED WITH FIG 2 ON SOUTH FACE. AUG  
28, 1868

PG 37 NORTH BETWEEN SECS 2 & 3 VAR 7-20

1327.26 LIMESTONE IN CENTER OF HIGHWAY SET BY  
CHURCH.

2654.52 INTERSECTED 1/4 LINE AT COR. FOUND STAKE & STONE &  
B.T.S TAKEN BY CHURCH. COR. IN ROAD & IN LINE OF E &  
W FENCE. CONTINUED NORTH WITH VAR 7-20

4756.62 CENTER OF SLUICE BRIDGE

5357.22 INTERSECTED NORTH BOUNDARY 2.64' WEST OF COR.  
FOUND OLD STAKE IN CENTER OF HIGHWAYS AND NEARLY  
IN LINE WITH FENCE RUNNING N. VAR CORRECTED 7-16  
AUG 28, 1868

SHEET 1 OF 4 CORNER CODE A-17(3)

Ronald Farnes

6-1703

PL509

- PG 48 WEST ON NORTH LINE SEC 3 VAR 7
- 2668.05 INTERSECTED  $\frac{1}{4}$  LINE FOR SEC 34 TOWN 3 N AT COR. FOUND OLD STAKE IN CENTER OF HIGHWAY AND IN LINE OF FENCES RUNNING NORTH AND SOUTH.
- 2654.85 SET  $\frac{1}{4}$  COR 13.2' EAST OF  $\frac{1}{4}$  COR. FOR TOWN 3 THE SEC. CORs WEST BEING LOST.
- 2979.9 CENTER SLUICE BRIDGE 5.28' WIDE
- 4068.9 CENTER SLUICE BRIDGE 5.28' WIDE
- 5300.13 INTERSECTED WEST BOUNDARY 12.62' SOUTH OF COR. SET AS PREVIOUSLY STATED (PAGE 47) VAR CORRECTED 6-44 MARKED  $\frac{1}{4}$  MONUMENT WITH FIGURE 3 ON SOUTH FACE. SEPT 3 1868
- 1877 RUGER VOL 2 PG 234 FOUND STONE MONUMENT. USED CORNER TO SUBDIVIDE THE NW QUARTER OF SECTION 2. SHOWS A DISTANCE OF 2654.19 TO THE NORTH QUARTER CORNER OF SECTION 2.
- 1886 RUGER VOL 2 PG 272 STATES NOTHING ABOUT COR. VAR 4-55 2654.52 TO N  $\frac{1}{4}$  COR SEC 3.
- 1933 SUNNY VOL 3 PG 235 SET 1"X36" PIPE IN CONCRETE PAVEMENT; 7.9' NORTH OF CENTERLINE OF PAVEMENT. SHOWS A DISTANCE OF 2653.6 TO THE NORTH QUARTER CORNER OF SECTION 3 AND 2656.9 TO THE NORTH QUARTER CORNER OF SECTION 2.
- 1958 BATTERMAN JR. VOL 3 PG 235 FOUND 1" PIPE 1' FROM NORTH EDGE OF PAVEMENT.
- 1971 HJL CSM VOL 2 PG 84 REFERENCE POINT OR PK (LEGEND)
- 1977 BARNES VOL 5 PG 364 FOUND 1" PIPE 0.3' DEEP AND REPLACED WITH ALUMINUM MONUMENT. PLACED REFERENCE PIPES.
- 1977 BARNES VOL 5 PG 349 STATES NOTHING ABOUT MON. 2654.75 TO W  $\frac{1}{4}$  COR SEC 35
- 1982 LEE CSM 11-131 ALUM
- 1988 BARNES A-17 & Z-17 (CENTER TWP) FOUND LARGE 6 1/2" X 9 1/2" X 12' STONE POINT UP AND UNDER THAT FOUND CUT LIMESTONE. CUT LIMESTONE IS 2.6' DEEP. PLACED MAGNET ON TOP OF STONE. EXCAVATION INDICATES THAT SUNNY DID NOT DIG FOR CORNER. FOUND DOT DISK. REFERENCED SAME. COR IS 6' NORTH OF CENTER OF PVMT. USING DOT CONTROL ALUM MON IS 246,125.95 N/S; 2,223,272.88 E/W & CUT LIMESTONE IS 246,124.14 N/S; 2,223,273.46' E/W
- 1988 BARNES VOL 6 PG 388 & 389 STATES NOTHING ABOUT MON. S89-20-19E 2658.06 TO N  $\frac{1}{4}$  COR SEC 2, S88-43-19W 2654.71 TO N  $\frac{1}{4}$  COR SEC 3, & S1-04-00E 2701.33 TO E  $\frac{1}{4}$  COR SEC 3.
- 1989 WIDOT STH 11 MAP #16698 PROJECT 1704-03-22 ALUM. MON. SET BY DONALD BARNES 246,124.14; 2,223,273.46. N2-04-07W 2656.24 TO E  $\frac{1}{4}$  COR SEC 34 CENTER TWP. N88-43-23E 2667.94 TO S  $\frac{1}{4}$  COR SEC 34 CENTER TWP., S1-03-59E 2695.72 TO E  $\frac{1}{4}$  COR SEC 3

SHEET 2 OF 24 CORNER CODE A-17(3)

Donald Barnes  
6-17-03

1992 BARNES A-17 (1) MONUMENT WILL BE DESTROYED BY ROAD CONSTRUCTION. FOUND DOT REFERENCE MONUMENTS & SHOW DISTANCES & BEARINGS TO CUT LIMESTONE & ALUM MON @ NE COR SEC 3. ALUM MON IS JUST NORTH OF CUT LIMESTONE.

1992 BARNES A-17(2) SHOWS DISTANCES TO CUT LIMESTONE, OLD ALUM. MON., & DOT DISK @ NE COR SEC 3. DID NOT ACCEPT DOT DISK.

2000 COMBS A-19(4) FD DOT DISK NB3-58-10W 13.25 FROM SET PK NAIL. THIS DISK DID NOT CHECK D.O.T. RIGHT OF WAY MAP DISTANCES EAST-WEST FOR SECTION CORNER LOCATION. DISK DID NOT CHECK D. BARNES PREVIOUSLY MEASURED DISTANCES EAST-WEST. NB9-14-40E 2657.74 TO DOT DISK @ SE COR SEC 35, SB9-20-22E 2659.14 TO DOT DISK @ SW COR SEC 35, 0.66' EAST OF N 1/4 COR SEC 3, AND STATEMENT "PRORATED DISTANCES USING DON BARNES ANGLE. D. BARNES ANGLE @ S 1/4 COR SEC 35 FROM SW TO SE COR SEC 34 IS 178-35-02. REFERENCED SAME. FD DOT DISK NB3-58-10W 13.25 & SET IRON REBAR FOR REF. MONUMENTS. SET PK MASONRY NAIL AT S 1/4 COR SEC 35.

2000 COMBS CSM 24-63 DOT DISK 2658.48 TO FD PK AT N 1/4 COR SEC 2

**FD REFERENCES.**

*C) Was the corner restored through acceptance of (1) an obliterated evidence location, or, (2) a found perpetuated location?*

ACCEPTED FOUND CUT LIMESTONE. DID NOT ACCEPT DOT DISK. USED MY OLD OBSERVATIONS.

*D) Describe any material discrepancy between the location of the corner as restored or reestablished and the location of that corner as previously restored or reestablished by distance and direction. Show the discrepancy on the plan view drawing under (a), above. Show the distances between the corner as previously restored or reestablished and (1) the corner as restored or reestablished, and (2) to at least 4 of the witness monuments shown on the drawing in (a), above.*

IT APPEARS THAT DOT MONUMENTED THE OLD ALUMINUM MONUMENT LOCATION.

I, **Donald Barnes**, hereby certify that the corner location as identified by the corner code index was determined by me under my direction and control and that this U.S. Public Land Survey Monument Record is correct and complete to the best of my knowledge and belief.

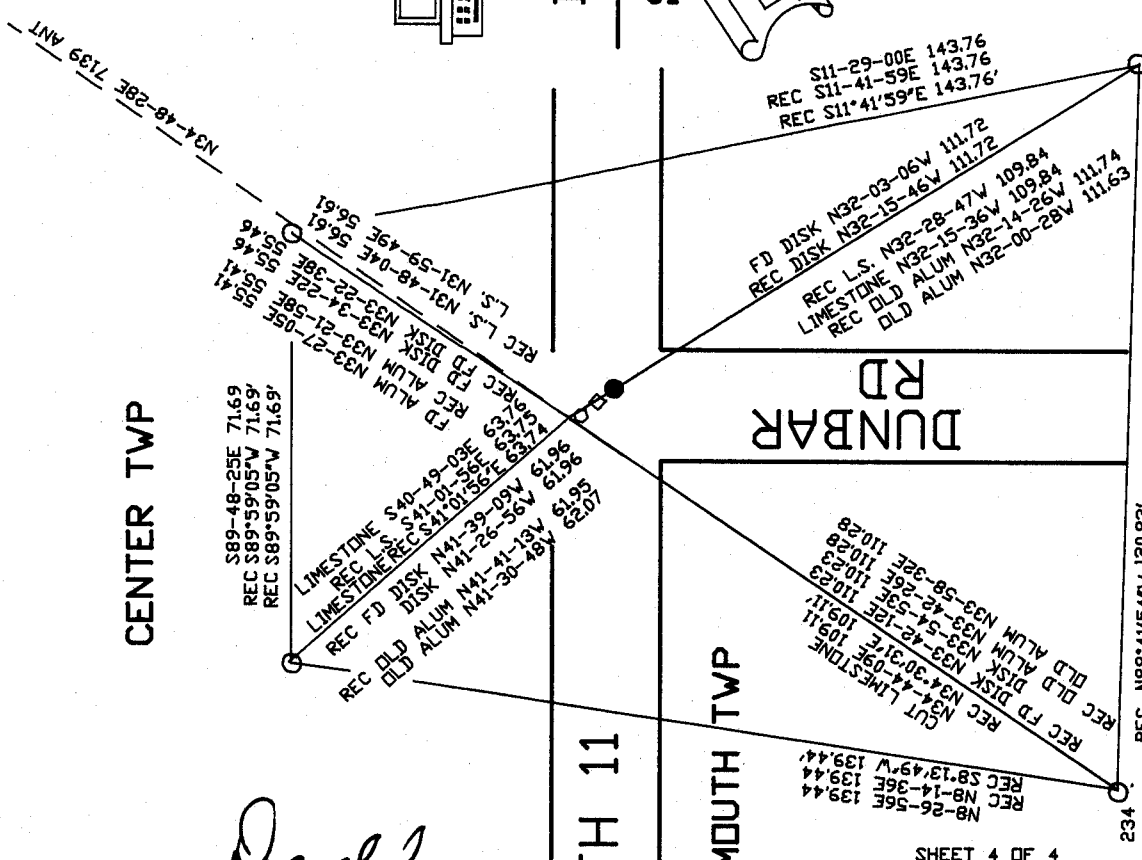
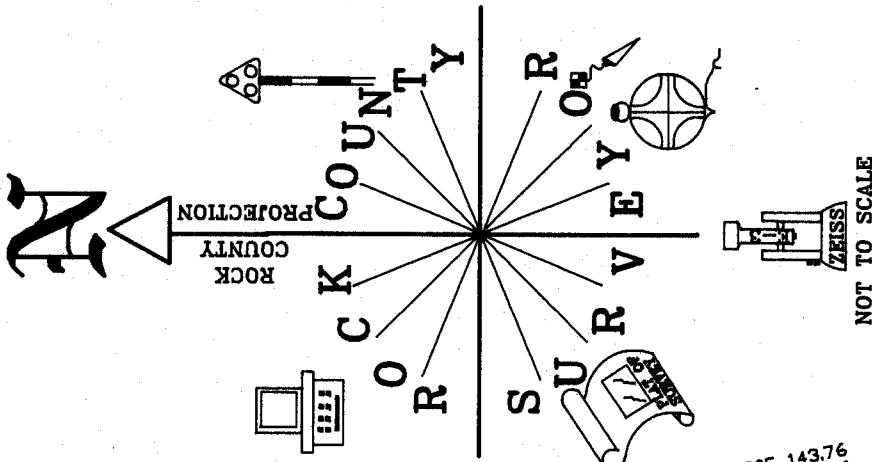
EMBOSSSED  
seal

*Donald Barnes*  
6-17-03

SHEET 3 OF 34

CORNER CODE **A-17(3)**

AFFIX YOUR LAND SURVEYOR SEAL



NE COR SEC 3 SE COR SEC 34  
 PLYMOUTH TWP & CENTER TWP  
 T2N R1E T3N R1E  
 COMMON CORNERS

CUT LIMESTONE IS THE CORNER  
 OLD ALUM. MONUMENT  
 CUT LIMESTONE  
 FOUND DOT DISK IN CONCRETE  
 FOUND DOT DISK IN CONCRETE

CENTER TWP

STH 11

PLYMOUTH TWP

DUNBAR RD

*Donald Barnes*  
 EMBOSSED SEAL

6-17-03

SHEET 4 OF 4

A-17(3)