

Paper weight-110# (minimum)

Black nonfading ink required

# U.S. PUBLIC LAND SURVEY MONUMENT RECORD

For Public Land Survey Corners In:  
T. 2 N. R. 11 E. 4th P.M.

WI ADMINISTRATIVE CODE A-E 7.08 REQUIREMENT

REV 10/23/2004 USMONREC.DWG

### CORNER CODE INDEX

A	1	2	3	4	5	6	7	8	9	10	11	12	13	14	15	16	17	18	19	20	21	22	23	24	25	A
B																										B
C																										C
D																										D
E																										E
F																										F
G																										G
H																										H
J																										J
K																										K
L																										L
M																										M
N																										N
O																										O
P																										P
Q																										Q
R																										R
S																										S
T																										T
U																										U
V																										V
W																										W
X																										X
Y																										Y
Z																										Z

PLYMOUTH TWP  
ROCK COUNTY WI

IF AVAILABLE  
ROCK COUNTY COORDINATES PREFERRED

North \_\_\_\_\_ Elev. \_\_\_\_\_

East \_\_\_\_\_

Hor. Datum \_\_\_\_\_ Vert. Datum \_\_\_\_\_

LATITUDE \_\_\_\_\_ ELLIPS. HT. \_\_\_\_\_

LONGITUDE \_\_\_\_\_

NAD83(91) \_\_\_\_\_ NETWORK ADJ. YR \_\_\_\_\_

GPS (X) \_\_\_\_\_ TRAVERSE (X) \_\_\_\_\_

BASED ON THE FOLLOWING CONTROL:  
\_\_\_\_\_

PLACE MONUMENT SYMBOL  AT PROPER LOCATION ON ABOVE INDEX

CORNER MONUMENT

WITNESS MONUMENT

BEARINGS ARE BASED ON: -----

FIELD BOOK \_\_\_\_\_ PAGE # \_\_\_\_\_

SHEET 1 OF 6

SHOW A PLAN VIEW DRAWING DEPICTING THE CORNER MONUMENT AND SURROUNDING PHYSICAL FEATURES, INCLUDING THE EXCAVATION AREA AND DEPTH.

PLANNING & ZONING COMMITTEE ADOPTED THIS FORM ON 12/2/1982

CORNER CODE A-19(6)

**PL510 N1/4CORSEC2**

(B) Describe any record evidence, monument evidence, occupational evidence, testimonial evidence or any other material evidence you considered, and whether the monument was found or placed.

- 1833 MULLET WEST ON SOUTH SIDE SECTIONS 34 & 35 {35}
- 1518 LEAVE PRAIRIE TO ENTER MARSH
  - 2442 STREAM 6.6' C SOUTH
  - 2508 LEAVE MARSH AND ENTER PRAIRIE
  - 2640 SET QUARTER SECTION POST IN PRAIRIE AND MADE MOUND
  - 5280 SET POST CORNERS SECTIONS 34 & 35 IN PRAIRIE AND MADE MOUND. LAND ROLLING PRAIRIE SECOND RATE. BY OBSERVATION VAR 7-45E
- 1868 LOCKE REMONUMENTATION FIELD NOTES.  
PG 38 EAST ON NORTH LINE SEC 2 VAR 5-45
- 505.56 CENTER SLUICE BRIDGE
  - 2657.49 INTERSECTED 1/4 LINE FOR TOWN 3 7.26' NORTH OF COR. FOUND STONE WITH STAKE SET BY ANDREW CODDINGTON IN OLD MOUND. COR. IN CENTER OF HIGHWAY AND IN LINE OF FENCE RUNNING N. VAR CORRECTED 5-36 CONTINUED EAST FROM 1/4 COR OF T3 WITH VAR 7-12
  - 3034.02 CENTER OF BRIDGE 33' WIDE OVER CREEK.
  - 5313.66 INTERSECTED EAST BOUNDARY AT COR.
  - 5316.96 INTERSECTED EAST BOUNDARY OF SEC 35 T3N AT COR.
  - 2656.83 SET 1/4 COR 0.66' WEST OF 1/4 COR FOR T3N 1/4 MONUMENT MARKED WITH FIG 2 ON SOUTH FACE. [2656.83 IS THE MIDPOINT DISTANCE AS LOCKE MEASURED]  
AUG 28, 1868
- 1877 RUGER VOL 2 PG 234 FOUND STONE MONUMENT @ NE COR SEC 1. CALLS FOR 2652.54' TO L.S. @ N 1/4 CORNER OF SECTION 2 AND 2616.89' TO EAST QUARTER CORNER OF SECTION 2. STATES THAT THE N 1/4 COR SEC 2 IS SOUTH OF A LINE DRAWN FROM SECTION CORNER TO SECTION CORNER (NW SEC 2 TO NE SEC 2).
- 1933 SUNNY VOL 3 PG 235 SET 1" X 36" PIPE IN CONCRETE PAVEMENT 8.0' SOUTH OF CENTERLINE. SHOWS A DISTANCE OF 2656.9 TO THE NW CORNER AND 2656.9 TO THE NE CORNER. SHOWS A DISTANCE OF 2625.1 TO THE FENCE INTERSECTION AT THE CENTER OF SECTION 2.
- 1977 BARNES VOL 5 PG 362 & 364 FOUND SUNNY'S PIPE AND REPLACED IT WITH AN ALUMINUM MONUMENT. EDM 2656.86 FROM N 1/4 TO NE CORNERS SEC 2
- 1979 SCHROEDER VOL 5 PG 531 SE COR SEC 35 TO S 1/4 COR SEC 35 IS 2659.5, SE COR SEC 35 TO E 1/4 COR SEC 35 IS 2661.58, & ANGLE @ SE COR SEC 35 IS 89-48 FROM S 1/4 COR TO E 1/4 COR SEC 35.
- 1988 BARNES A-19 & Z-19 (CENTER TWP) FB#2 PG 76 & FB#3 PG 5 DUG AND FOUND CUT LIMESTONE 26" DEEP 3.0 SOUTH OF CENTER OF PAVEMENT. PLACED MAGNET ON TOP OF STONE. THE CUT LIMESTONE IS N43-12E 3.19 FROM THE ALUM. MON. IT APPEARED FROM THE EXCAVATION SITE THAT SUNNY NEVER DUG FOR THE CORNER. REFERENCED CORNER. DID NOT ACCEPT PREVIOUS ALUM. MON. ACCEPTED FD CUT L.S. DID NOT PLACE ANY MON. BECAUSE

SHEET 1 OF 6

CORNER CODE A-19(6)

*Donald Barnes*

*10/15/2009*

PL510 N1/4CORSEC2

- OF PROPOSED RD CONSTRUCTION. S 1/4 COR SEC 35 IS NB9-14-43E 0.66'. USING DOT CONTROL S 1/4 COR SEC 35 IS N/S 246,093.47; E/W 2,225,932.01
- 1988 BARNES VOL 6 PG 388 & 389 NB9-20-19W 2658.06 TO NW COR SEC 2, NB9-14-44E 2654.68 TO NE COR SEC 2, S1-10-04E 2628.69 TO INT OF 1/4 LINES IN SEC 2, & 0.66 WEST OF S 1/4 COR SEC 35.
- 1989 WIDOT PROJ #1704-03-22 STH MAP #16701 CUT LIMESTONE 246,093.46; 2,225,931.35 S 1/4 COR SEC 35 CENTER TWP MON TO BE SET 246,093.47; 2,25,932.01. SB9-13-07EW 0.66' FROM S 1/4 COR SEC 34 TO N 1/4 COR SEC 2.
- 1992 BARNES A-19(1) & Z-19(1) (MAY) FOUND DOT DISK & REC REFERENCE MONUMENTS. SHOWS TIES TO OLD ALUM MON, LIMESTONE. MONUMENT WILL BE DESTROYED BY CONSTRUCTION.
- 1992 BARNES A-19(2) & Z-19(2) (NOV) ADDITIONAL TIES AS SHOWN IN A-19(1) SHOWS TIES TO OLD ALUM MON, LIMESTONE & NEW FD DISKS @ 1/4 CORNERS. FD WIDOT DISK.
- 2000 COMBS A-19(4) FD DOT DISK NB3-58-10W 13.25 FROM SET PK NAIL. THIS DISK DID NOT CHECK D.O.T. RIGHT OF WAY MAP DISTANCES EAST-WEST FOR SECTION CORNER LOCATION. DISK DID NOT CHECK D. BARNES PREVIOUSLY MEASURED DISTANCES EAST-WEST. S 1/4 COR SEC 35 NB9-14-40E 2657.74 TO DOT DISK @ SE COR SEC 35, S 1/4 COR SEC 35 SB9-20-22E 2659.14 TO DOT DISK @ SW COR SEC 35, S 1/4 COR SEC 35 IS 0.66' EAST OF N 1/4 COR SEC 3, AND STATEMENT "PRORATED DISTANCES USING DON BARNES ANGLE. D. BARNES ANGLE @ S 1/4 COR SEC 35 FROM SW TO SE COR SEC 34 IS 178-35-02. REFERENCED SAME. FD DOT DISK NB3-58-10W 13.25 & SET IRON REBAR FOR REF. MONUMENTS. SET PK MASONRY NAIL AT N 1/4 COR SEC 2. SET NEW REFERENCE MONUMENTS.
- 2000 BARNES A-19(3) & Z-19(2)(CENTER TWP) COMBS CONTACTED ME ABOUT EXISTING TIES. USED OLD OBSERVATIONS & RE-DREW TIES TO CLARIFY THINGS. DOT DISK IS NOT IN THE SAME POSITION AS THE FOUND CUT LIMESTONE. DID NOT ACCEPT DISK. INCLUDES A PAGE OF BEARINGS & DISTANCES TO ERRONEOUS MONUMENTS AND ACCEPTED MONUMENTS.
- 2000 COMBS CSM24-55 SET PK 0.66' WEST OF S 1/4 COR SEC 35 CENTER TWP. 2654.36 NE COR SEC 2 (DOT DISK).
- 2000 COMBS CSM24-63 FD PK 2658.48 TO NW COR SEC 2 A DOT DISK
- 2000 COMBS A-19(4) FD DOT DISK NB3-58-10W 13.25 FROM SET PK NAIL. THIS DISK DID NOT CHECK DOT RIGHT-OF-WAY MAP DISTANCES EAST-WET FOR SECTION CORNER LOCATION. DISK DID NOT CHECK D. BARNES PREVIOUSLY MEASURED DISTANCES EAST-WEST. FROM S 1/4 COR TO SW COR SEC 35 IS NB9-20-22E 2659.14 TO DOT DISK (BARNES 2658.72), FROM S 1/4 COR TO SE COR SEC 35 IS NB9-14-40E 2657.74 TO DOT DISK (BARNES 2657.32) S 1/4 COR IS 0.66 EAST OF N 1/4 COR SEC 2. PRORATED DISTANCES USING BARNES ANGLE OF 178-35-02 SET REF 3/4X24 REBAR. FD DOT DISK @ SE COR SEC 35 & SW COR SEC 35.
- 2003 BARNES A-19(5) ACCEPTED FOUND CUT LIMESTONE. USED MY 2000 OBSERVATIONS. DOT DISK & ALUM MONUMENT ARE NOT IN THE SAME POSITION AS THE FOUND CUT LIMESTONE. THE 2ND ALUM IS ALSO NOT @ THE S 1/4 COR SEC 35 DID NOT ACCEPT DISK, MAP SHOWS DISCREPANCY. REFERENCED CORNERS.
- 2006 LATHROP GSM 30-113 SET PK @ N 1/4 COR SEC 2 & SET PK @ SW COR SEC 35. SOUTH LINE OF SW 1/4 SEC 35 IS 2658.07

SHEET 2 OF 6

CORNER CODE A-19(6)

*Don Barnes*

*10/15/2009*

PL510 N1/4CORSEC2

PRIOR TO RESURFACING PROJECT I SEARCHED & FOUND NOTHING AT THE PVMT SURFACE. FOUND NW, SW, NE, & SE WIDOT REFERENCE DISKS. AFTER RESURFACING FOUND PK/FLASHER @ BOTH CORNERS. FLASHER STAMPED "WIDOT SURVEY". PK/FLASHER WAS SLIGHTLY BELOW SURFACE & 3.7' SOUTH OF CENTER OF PVMT. THE NE & SE WIDOT DISKS IN CONG. SEEMED TO BE DISTURBED BY FARM ACTIVITY.

*C) Was the corner restored through acceptance of (1) an obliterated evidence location, or, (2) a found perpetuated location?*

IN 1868 LOCKE CALLS FOR SETTING THE N 1/4 COR SEC 2 MIDWAY BETWEEN THE NE & NW CORNERS OF SEC 2 AS HE MEASURED. HIS DISTANCE WAS 2656.83 BETWEEN THE NE & NW CORNERS OF SEC 2.

I ACCEPTED FOUND PK/DOT FLASHER WHICH IS THE LOCATION OF LOCKE'S FOUND CUT LIMESTONE. THE LOCATION IS IN HARMONY WITH LOCKE'S DISTANCES TO NE & NW CORNERS OF SEC 2 & RUGER'S DISTANCE TO THE CENTER OF SEC 2.

THERE ARE 3 ERRONEOUS MONUMENTS AND THEY ARE:

- 1) SUNNY'S SET PIPE, WHICH I REPLACED WITH AN ALUM. MON.
- 2) THE FOUND REROD I FOUND IN 1992
- 3) THE DOT DISK THEY SET IN 1990
- 4) THE PK COMBS SET IN 2000 IS REC 13.25 BETWEEN DOT DISK & THE N 1/4 COR (LS) & MY DISTANCE IS 13.52.

FOUND CUT LS @ NW COR SEC 2, N 1/4 COR SEC 2, & PIPE @ NE COR SEC 2 (NO REC OF FOUND L.S.). IN 1877 RUGER SHOWS A STONE MONUMENT AND STATES THAT IT IS SOUTH OF A LINE DRAWN FROM SECTION CORNER TO SECTION CORNER. HOWEVER, THE FOUND CUT L.S. @ THE N 1/4 COR SEC 2 IS 32.86' NORTH OF THE LINE BETWEEN THE NW & NE CORNERS OF SEC 2.

THE L.S. IS 3.7' SOUTH OF CENTER OF PVMT. THE 1988 LS WAS 3.0 SOUTH OF THE CENTER OF THE PVMT. LOCKE CALLED FOR THE CORNER @ THE CENTER OF THE RD.

COMBS STATED ANGLE AND DISTANCES WERE NOT CHECKING WITH MINE. THIS IS BECAUSE HE USED WIDOT DISK @ THE NW COR OF SEC 2 AND NOT THE PERPETUATED FOUND CUT LIMESTONE.

SHEET 3 OF 6  
CORNER CODE A-19(6)

*Donald Barnes*  
*A-19(6)*

PL510 N1/4CORSEC2

D) Describe any material discrepancy between the location of the corner as restored or reestablished and the location of that corner as previously restored or reestablished by distance and direction. Show the discrepancy on the plan view drawing under (a), above. Show the distances between the corner as previously restored or reestablished and (1) the corner as restored or reestablished, and (2) to at least 4 of the witness monuments shown on the drawing in (a), above.

**DISCREPANCIES ARE SHOWN.**

(E) Was the corner reestablished through lost corner proportionate methods? If so, show the method, including the directions and distances to other public land survey corners used as evidence or used for proportioning the corner location.

**NO**

I, DONALD BARNES, hereby certify that the corner location as identified by the corner code index was determined by me under my direction and control and that this U.S. Public Land Survey Monument Record is correct and complete to the best of my knowledge and belief.

embossed  
seal

Donald Barnes  
10/14/2009

SHEET 4 OF 6

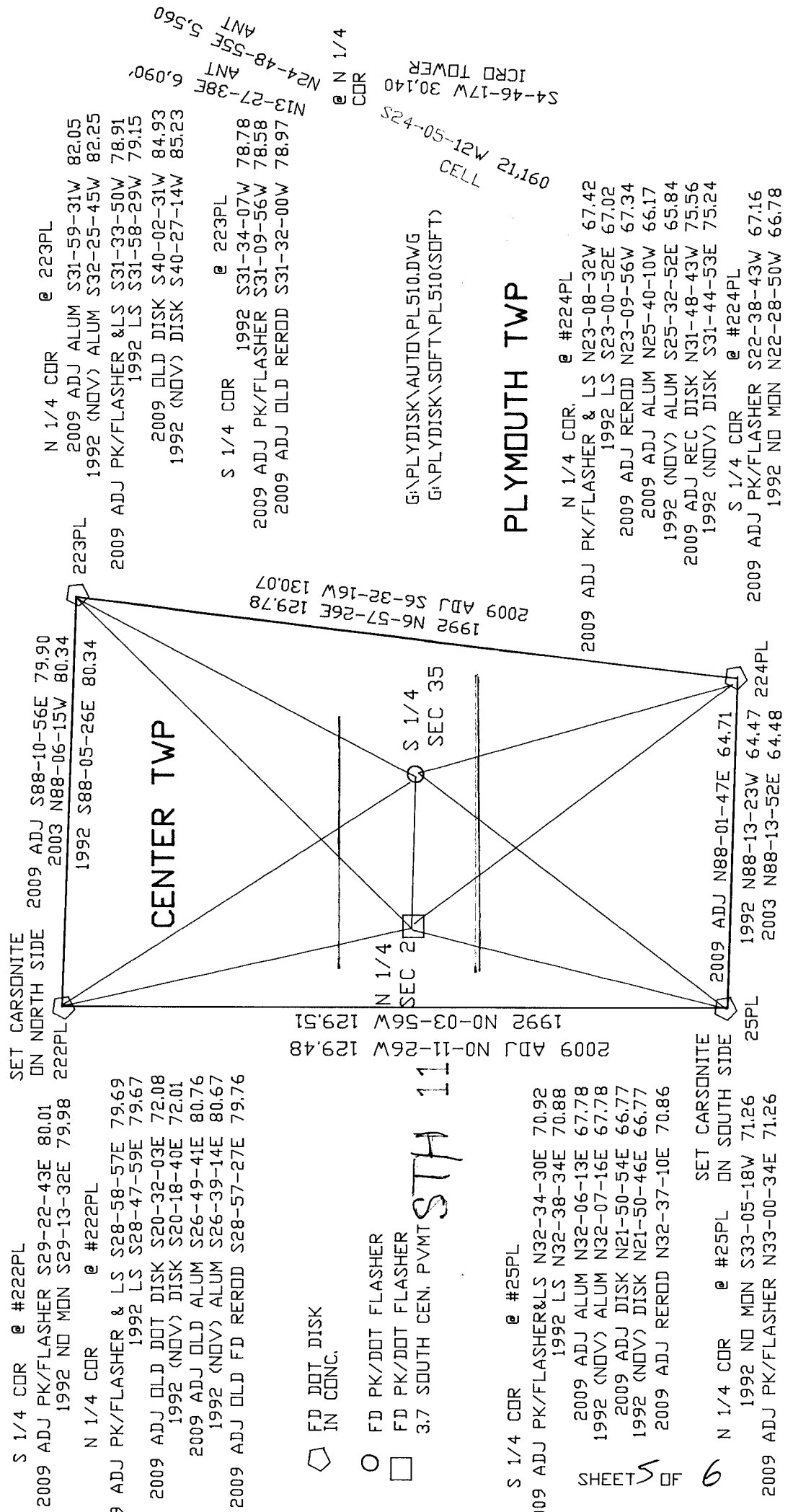
CORNER CODE **A-19(6)**

AFFIX YOUR LAND SURVEYOR SEAL

EMBOSSSED SEAL  
*Donald Barnes*

10/15/2009

A-19(6)



S 1/4 COR @ #222PL  
 2009 ADJ PK/FLASHER S29-22-43E 80.01  
 1992 NO MON S29-13-32E 79.98  
 N 1/4 COR @ #222PL  
 2009 ADJ PK/FLASHER & LS S28-58-57E 79.69  
 1992 LS S28-47-59E 79.67  
 2009 ADJ OLD DOT DISK S20-32-03E 72.08  
 1992 (NOV) DISK S20-18-40E 72.01  
 2009 ADJ OLD ALUM S26-49-41E 80.76  
 1992 (NOV) ALUM S26-39-14E 80.67  
 2009 ADJ OLD FD REROD S28-57-27E 79.76

SET CARSONITE ON NORTH SIDE  
 2009 ADJ S88-10-56E 79.90  
 2003 N88-06-15W 80.34  
 1992 S88-05-26E 80.34  
 222PL  
 2009 ADJ PK/FLASHER & LS S31-33-50W 78.91  
 1992 LS S31-58-29W 79.15  
 2009 OLD DISK S40-02-31W 84.93  
 1992 (NOV) DISK S40-27-14W 85.23

S 1/4 COR @ 223PL  
 1992 S31-34-07W 78.78  
 2009 ADJ PK/FLASHER S31-09-56W 78.58  
 2009 ADJ OLD REROD S31-32-00W 78.97

FD DOT DISK IN CONC.  
 FD PK/DOT FLASHER  
 FD PK/DOT FLASHER  
 3.7 SOUTH CENT. PVMT STA 11

S 1/4 COR @ #25PL  
 2009 ADJ PK/FLASHER&LS N32-34-30E 70.92  
 1992 LS N32-38-34E 70.88  
 2009 ADJ ALUM N32-06-13E 67.78  
 1992 (NOV) ALUM N32-07-16E 67.78  
 2009 ADJ DISK N21-50-54E 66.77  
 1992 (NOV) DISK N21-50-46E 66.77  
 2009 ADJ REROD N32-37-10E 70.86

N 1/4 COR @ #25PL ON SOUTH SIDE  
 1992 NO MON S33-05-18W 71.26  
 2009 ADJ PK/FLASHER N33-00-34E 71.26

2009 ADJ S6-57-26E 129.78  
 1992 S6-32-16W 130.07  
 2009 ADJ S68-01-47E 64.71  
 1992 N88-13-23W 64.47  
 2003 N88-13-52E 64.48

2009 ADJ N6-32-16W 130.07  
 1992 N6-57-26E 129.78  
 2009 ADJ N88-01-47E 64.71  
 1992 N88-13-23W 64.47  
 2003 N88-13-52E 64.48  
 2009 ADJ PK/FLASHER S22-38-43W 67.16  
 1992 NO MON N22-28-50W 66.78

PLYMOUTH TWP

N 1/4 COR @ #224PL  
 2009 ADJ PK/FLASHER & LS N23-08-32W 67.42  
 1992 LS S23-00-52E 67.02  
 2009 ADJ REROD N23-09-56W 67.34  
 2009 ADJ ALUM N25-40-10W 66.17  
 1992 (NOV) ALUM S25-32-52E 65.84  
 2009 ADJ REC DISK N31-48-43W 75.56  
 1992 (NOV) DISK S31-44-53E 75.24

S 1/4 COR @ #224PL  
 2009 ADJ PK/FLASHER S22-38-43W 67.16  
 1992 NO MON N22-28-50W 66.78

S4-46-17W 30.140  
 S24-50-12W 30.140  
 S21-50-42S  
 09121 21.16  
 CELL  
 S4-46-17W 30.140  
 ICRD TOWER  
 @ N 1/4  
 COR  
 N13-27-38E  
 ANT  
 6.090  
 N24-48-55E  
 ANT  
 5.560

G:\PLYDISK\AUTO\PL510.DWG  
 G:\PLYDISK\SOFT\PL510(SOFT)

