

Paper weight-110# (minimum)

Black nonfading ink required

# U.S. PUBLIC LAND SURVEY MONUMENT RECORD

For Public Land Survey Corners In:

WI ADMINISTRATIVE CODE A-E 7.08 REQUIREMENT

T. 2N. R. 11E. 4th P.M.

REV 10/23/2004

USMONREC.DWG

CORNER CODE INDEX

PLYMOUTH TWP  
ROCK COUNTY WI

IF AVAILABLE  
ROCK COUNTY COORDINATES PREFERRED

A	2	3	4	5	6	7	8	9	10	11	12	13	14	15	16	17	18	19	20	21	22	23	24	25	A
B		6				5					4				3					2				1	B
C																									C
D																									D
E																									E
F																									F
G																									G
H																									H
J																									J
K																									K
L																									L
M																									M
N																									N
O																									O
P																									P
Q																									Q
R																									R
S																									S
T																									T
U																									U
V																									V
W																									W
X																									X
Y																									Y
Z																									Z

North \_\_\_\_\_ Elev. \_\_\_\_\_

East \_\_\_\_\_

Hor. Datum \_\_\_\_\_ Vert. Datum \_\_\_\_\_

LATITUDE \_\_\_\_\_ ELLIPS. HT. \_\_\_\_\_

LONGITUDE \_\_\_\_\_

NAD83(91) \_\_\_\_\_ NETWORK ADJ. YR \_\_\_\_\_

GPS (X) \_\_\_\_\_ TRAVERSE (X) \_\_\_\_\_

BASED ON THE FOLLOWING CONTROL:

1 2 3 4 5 6 7 8 9 10 11 12 13 14 15 16 17 18 19 20 21 22 23 24 25  
PLACE MONUMENT SYMBOL  AT PROPER  
LOCATION ON ABOVE INDEX

CORNER MONUMENT

WITNESS MONUMENT

BEARINGS ARE BASED ON: \_\_\_\_\_

FIELD BOOK \_\_\_\_\_ PAGE # \_\_\_\_\_

SHEET 1 OF 5

SHOW A PLAN VIEW DRAWING DEPICTING THE CORNER MONUMENT AND SURROUNDING PHYSICAL FEATURES, INCLUDING THE EXCAVATION AREA AND DEPTH.

PLANNING & ZONING COMMITTEE ADOPTED THIS FORM ON 12/2/1982

CORNER CODE A-13(4)

PL507

NECORSEC4

(B) Describe any record evidence, monument evidence, occupational evidence, testimonial evidence or any other material evidence you considered, and whether the monument was found or placed.

- 1833 MULLETT WEST ON SOUTH SIDE SECTION 34  
2640 SET QUARTER SECTION POST IN PRAIRIE AND MADE MOUND  
5280 SET POST CORNER SECTIONS 33 & 34 IN PRAIRIE AND MADE MOUND LAND ROLLING PRAIRIE SECOND RATE.
- 1833 MULLETT WEST ON SOUTH SIDE SECTION 33 T3N R11E  
2640 SET QUARTER SECTION POST IN PRAIRIES AND MADE MOUND  
5280 SET POST CORNERS SECTIONS 32 & 33 IN PRAIRIE AND MADE MOUND. LAND & C SAME.
- 1833 HARRISON NORTH BET 3 & 4  
2574 LEFT MARSH & ENTER PRAIRIE  
2640 QUARTER SEC COR. SET A POST & RAISED MOUND  
5214 INT. N. BDY 26.4' E OF P. SET POST & RAISED MOUND FOR COR TO SECS 3 & 4. LAND 1<sup>ST</sup> 1/2 LEVEL & WET 3<sup>RD</sup> RATE- MARSH- NORTH 1/2 ROLLING 1<sup>ST</sup> RATE PRAIRIE DEC 26<sup>TH</sup> 1833
- 1847 TWP RD RECORDS BK 1 PG 21 BEGINNING AT THE NORTHWEST CORNER OF SEC 3 AND 4, 9 AND 10, 15 AND 16, 21 AND 22 TO THE SOUTHWEST CORNER OF SEC 22. SAID RD IS FOUR RODS IN WIDTH.
- 1866 LOCKE REMONUMENTATION FIELD NOTES.  
PG 47 NORTH BETWEEN SECS 3 AND 4 VAR 7-25  
2655.84 INTERSECTED 1/4 LINE 3.96' WEST OF COR. FOUND POST IN MOUND 6 INCHES SOUTH TO COR POST TO FENCES VAR CORRECTED 7-20  
CONTINUED NORTH FROM 1/4 COR WITH VAR 7-20  
5243.04 INTERSECTED NORTH BOUNDARY 11.88' EAST OF COR. CORNERS FOR TOWN 2 AND 3 BOTH LOST. SET COR FOR TOWN 3 MIDWAY AND ON A RIGHT LINE BETWEEN THE 1/4 COR 1/2 MILE EAST AND WEST AND SET THE COR. FOR TOWN 2 2.64'? 26.4'? EAST OF COR. FOR TOWN 3 COR IN CENTER OF HIGHWAY VAR CORRECTED 7-35 SEPT. 3 1868  
PG 48 WEST ON NORTH LINE SEC 3 VAR 7  
2668.05 INTERSECTED 1/4 LINE FOR SEC 34 TOWN 3 N AT COR. FOUND OLD STAKE IN CENTER OF HIGHWAY AND IN LINE OF FENCES RUNNING NORTH AND SOUTH.  
2654.85 SET 1/4 COR 13.2' EAST OF 1/4 COR. FOR TOWN 3 THE SEC. CORNERS WEST BEING LOST.  
2979.9 CENTER SLUICE BRIDGE 5.28' WIDE  
4068.9 CENTER SLUICE BRIDGE 5.28' WIDE  
5300.13 INTERSECTED WEST BOUNDARY 12.62' SOUTH OF COR. SET AS PREVIOUSLY STATED (PAGE 47) VAR CORRECTED 6-44 MARKED 1/4 MONUMENT WITH FIGURE 3 ON SOUTH FACE. SEPT 3 1868  
PG 49 WEST ON NORTH LINE SEC 4 VAR 7 [FROM NE SEC 4]  
503.58 STONE CULVERT  
1256.64 CENTER SLUICE BRIDGE 3.3' WIDE  
2684.88 INTERSECTED 1/4 LINE FOR TOWN 3 2.11' SOUTH OF COR FOUND OLD STAKE IN CENTER OF HIGHWAY AND NEARLY IN LINE WITH FENCES RUNNING N AND S.  
2651.88 SET 1/4 COR FOR SEC 4 33' EAST OF COR. FOR TOWN 3 33' BEING 1/2 OF THE SUM OF THE MEAN BETWEEN THE "JOBS" AT THE SEC. CORNERS. VAR CORRECTED 6-44

SHEET 1 OF 5  
CORNER CODE A-13(4)

Donald Barnes  
10/13/2009

PL507 NECORSEC4

CONTINUED WEST FROM 1/4 COR WITH VAR 7

- 5311.18 INTERSECTED WEST BOUNDARY 26.90' SOUTH OF COR. FOUND STONE SET BY SELF. (SEE CO. SURVEYORS RECORD SEC 4) VAR CORRECTED 6-25 MARKED 1/4 MONUMENT WITH FIGURE 4 ON SOUTH FACE. SEPT 3, 1868
- 1933 SUNNY VOL 3 PG 235 @ NE COR SEC 4 SET 1" X 36" IRON PIPE IN CONCRETE PAVEMENT 1.76' NORTH OF CENTER OF SAME. STATES NOTHING ABOUT SE COR SEC 33 BUT CALLS FOR THE NE COR SEC 4 AS 26.4 TO THE EAST. NW COR SEC 3 GO SET PIPE @ N 1/4 COR SEC 3 IS 2645.4
- 1934 SUNNY VOL 3 PG 236 FOR THIS COR. SEE PG 235. 26.4' OFFSET. SE COR SEC 33 IS WEST.
- 1970 BATTERMAN JR. VOL 4 PG 484 REFERENCED AND MAPPED CORNER NE COR SEC 4.
- 1974 LEE MAP #4316 PIPE @ NE COR SEC 4. ANGLE 89-54-12 @ N 1/4 COR SEC 4 FROM NE COR SEC 4 TO CENTER OF SEC 4.
- 1988 LEE GSM13-216 2625.14 TO N 1/4 COR SEC 4 & 26.46 EAST OF SE COR SEC 33 CENTER TWP
- 1988 BARNES A-13 & Z-13 (CENTER TWP) @ NE COR SEC 4 THERE IS A LARGE CUT ON NORTH SIDE OF ROAD AND SMALL CUT ON SOUTH SIDE. FOUND 1" PIPE @ NE COR SEC 4, REFERENCE TIES, & EXCAVATION HOLE @ SE COR SEC 33. USING DOT CONTROL 246,015.82; E/W 2,217,948.38' FOR SE COR SEC 33 CENTER TWP. @ SE COR SEC 33 CENTER TWP DUG 4X10 HOLE & FD NOTHING. SUBSOIL INDICATES AREA WAS CUT. LARGE BANK CUT ON NORTH SIDE AND POSSIBLY SMALL CUT ON SOUTH SIDE. PLACED SE COR SEC 33 ON LINE WITH NE COR OF SEC 3 PLYMOUTH TWP NORTH 1/4 COR OF SEC 4 PLY AT RECORD DISTANCE.
- 1988 WIDOT VOL 6 PG 386 & 388 BEARINGS & DISTANCES ARE INVERSE OF DOT COORDINATES. N88-56-44E 2645.99 FROM NE COR SEC 4 TO N 1/4 COR SEC 3, 889-03-54W 2651.06 FROM NE COR SEC 4 TO N 1/4 COR SEC 4, 81-27-23E 2587.09 FROM NE COR SEC 4 TO E 1/4 COR SEC 4, NE COR SEC 4 IS EAST OF SE COR SEC 33. SE COR SEC 33 TO E 1/4 COR SEC 33 IS N1-57-37W 2662.16.
- 1989 WIDOT 8TH 11 MAP #16698 PROJECT 1704-03-22 @ NE COR SEC 4 FD REINFORCING ROD 246,016.25; 2,217,974.77 889-04-00W 26.40 TO SE COR SEC 33 CENTER TWP MON TO BE SET (246,015.82; 2,217,948.38)
- 1992 BARNES A-13(1) & Z-13(1) & FB#2 PG 75. FOUND DOT DISK IN CONCRETE MON & DOT REFERENCE MONUMENTS. N86-47-19W 26.42' TO SE COR SEC 33 CENTER TWP. MONUMENT WILL BE DESTROYED BY CONSTRUCTION. BEARINGS & DISTANCES ARE COMPILED FROM DOT FIELD OBSERVATIONS.
- 1992 BARNES A-13(2) FD DOT DISK @ NE COR SEC 4 & DOT REFERENCE MONUMENTS. N86-47-19W 26.42 (REC 26.40) TO SE COR SEC 33 CENTER TWP. DOT STATIONING: 299+44 @ SE COR SEC 33 & 299+71 @ NE COR SEC 4. DID NOT ACCEPT DISK. ACCEPTED POSITION AS ESTABLISHED BY TIES OF RECORD. THE DISK IS 0.44' SOUTH AND 0.08' EAST OF THE CORRECT LOCATION. RECORD TIE DISTANCES DO NOT AGREE WITH DISK.
- 1993 COMBS GSM VOL 17 PG 75 FD DOT DISK @ N 1/4 COR SEC 3, SW COR SEC 34, & NW COR SEC 3. FD PIPE @ S 1/4 COR SEC 33. SE COR SEC 33 TO S 1/4 COR SEC 33 N89-04-10W 2650.56, SW COR SEC 34 TO N 1/4 SEC 3 (PROBABLY S 1/4 COR SEC 34) N88-56-10E 2658.31, & SW COR SEC 33 TO NW COR SEC 33 N88-37-10E 26.40.

*Dwight Barnes*  
10/13/2009

SHEET 2 OF 5  
CORNER CODE A-13(4)

**PL507 NEGORSEC4**

- 1995 LUENBERGER CSM VOL 18 PG 425 FD DOT BRASS CAP AT NE COR SEC 4 & SE COR SEC 33. FD PIPE IN MON BOX @ N 1/4 SEC 4 & S 1/4 COR SEC 33. NE COR SEC 4 TO N 1/4 COR SEC 4 IS 2651.11, 2650.62 FROM S 1/4 COR TO SE COR SEC 33. 26.46 FROM DISK TO DISK & 25.97 FROM PIPE TO PIPE IN BOXES. FROM DOT DISK SET FOR NE COR SEC 4 SOUTH ALONG SEC LINE 80.38 TO NE CORNER OF CSM LOT.
- 2002 REIGEL MAP #14301 & 14302 FD 1" PIPE IN MON BOX & FD 1" PIPE IN MON BOX AT SE COR SEC 33. 26.52 NE COR SEC 4 IS EAST OF SE COR SEC 33. 2651.14 FROM NE COR SEC 4 TO N 1/4 COR SEC 4
- 2003 BARNES A-13(3) & OBSERVATION SHEETS 2245, 2246, 2247, 4627, & 7070 USED MY OLD OBSERVATIONS. FD TIES. THE WIDOT DISK IS NOT AT THE CORRECT LOCATION. SEE U.S. PUBLIC LAND SURVEY MONUMENT RECORD A-13(1).
- 2004 BARNES PLYMOUTH REMON FROM SE COR SEC 33 TO S 1/4 COR SEC 34 NB9-34-55E 2658.36, FROM SE COR SEC 33 TO S 1/4 COR SEC 33 SB9-42-32W 2657.54, FROM SE COR SEC 33 TO NW COR SEC 3 NB9-33-46E 26.41, FROM NW COR SEC 3 TO N 1/4 COR SEC 3 NB9-34-56E 2645.15, FROM NE COR SEC 4 TO N 1/4 COR SEC 4 SB9-42-13W 2655.37, & FROM NW COR SEC 3 TO W 1/4 COR SEC 3 SB-49-18E 2587.06
- 2005 LATHROP #15232 SW COR SEC 34 FD DOT DISK. N01-57-41E 2662.14 TO W 1/4 COR SEC 34

PRIOR TO RESURFACING FD 4 WIDOT DOT REFERENCE MONUMENTS. DID NOT FIND DISKS @ CORNERS. SE COR SEC 33 IS ON A LINE BETWEEN THE NE COR SEC 4 & THE N 1/4 COR SEC 4. IN SEP. AFTER RESURFACING I FD PK/FLASHER @ SE COR SEC 33 & @ NE COR SEC 4. FLASHER STAMPED "WI DOT SURVEY" & PLACED JUST BELOW PVMT SURFACE.

*C) Was the corner restored through acceptance of (1) an obliterated evidence location, or, (2) a found perpetuated location?*

**YES**

ACCEPTED 1992 BARNES A-13(2). DID NOT ACCEPT RECORD DISK. ACCEPTED POSITION AS ESTABLISHED BY TIES OF RECORD. THE REC DISK IS 0.44' SOUTH AND 0.08' EAST OF THE CORRECT LOCATION. ACCEPTED FD PK/FLASHERS. THE FD PIPE IS IN HARMONY WITH LOCKE'S CALLS. THE LOCATION IS IN HARMONY WITH LOCKE'S DISTANCE CALLS TO THE N 1/4 SEC 3 & THE N 1/4 SEC 4 AND HIS CALL FOR THE SE COR OF SEC 33 AS RIGHT LINE TO THE LINE BETWEEN THOSE CORNERS. THE SE COR SEC 33 IS 2.89 SOUTH OF THAT LINE & WITHIN HUNDRETHS OF A RIGHT LINE.

*D) Describe any material discrepancy between the location of the corner as restored or reestablished and the location of that corner as previously restored or reestablished by distance and direction. Show the discrepancy on the plan view drawing under (a), above. Show the distances between the corner as previously restored or reestablished and (1) the corner as restored or reestablished, and (2) to at least 4 of the witness monuments shown on the drawing in (a), above.*

1992 WIDOT DISKS @ CORNERS DID NOT AGREE WITH TIES. FD PK/FLASHERS AGREE WITH OLD TIE DISTANCES.

I, Donald Barnes, hereby certify that the corner location as identified by the corner code index was determined by me under my direction and control and that this U.S. Public Land Survey Monument Record is correct and complete to the best of my knowledge and belief.

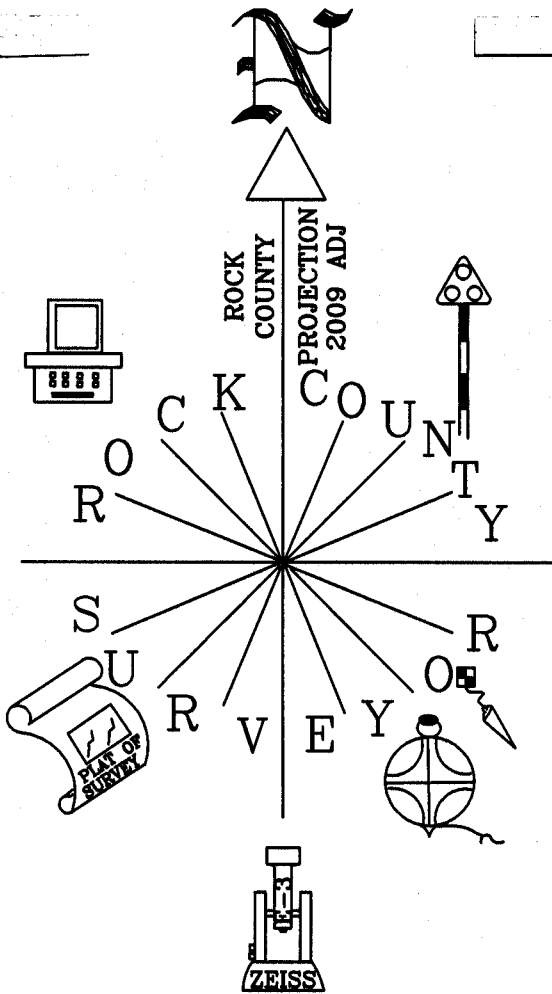
Seal  
*Donald Barnes*  
Emboss

SHEET 3 OF 5

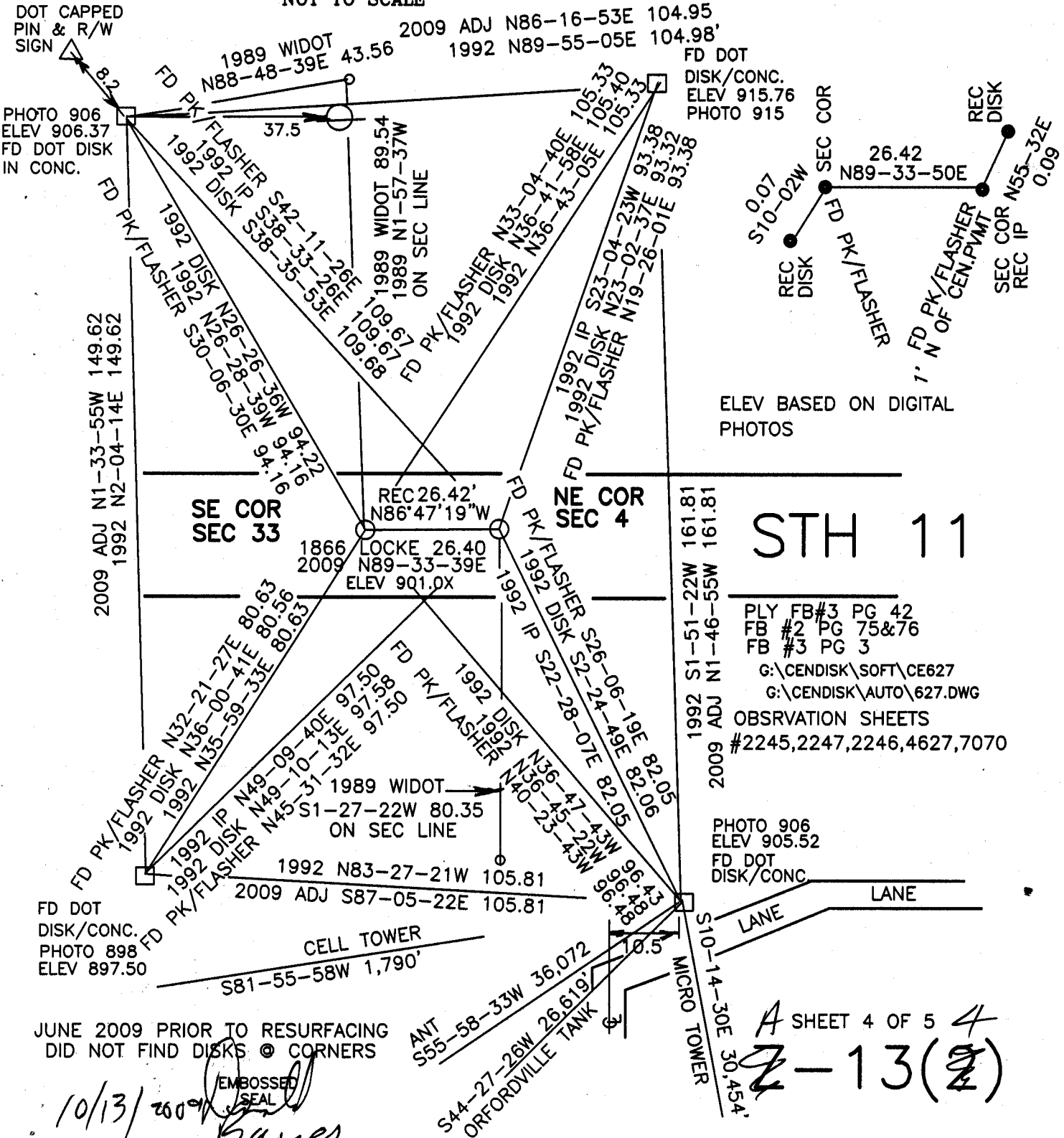
*Barnes*

CORNER CODE **A-13(4)**

*10/13/2009* 7.08 REQUIREMENT



NOT TO SCALE



ELEV BASED ON DIGITAL PHOTOS

PLY FB#3 PG 42  
 FB #2 PG 75&76  
 FB #3 PG 3  
 G:\CENDISK\SOFT\CE627  
 G:\CENDISK\AUTO\627.DWG  
 OBSRVATION SHEETS  
 #2245,2247,2246,4627,7070

PHOTO 906  
 ELEV 905.52  
 FD DOT  
 DISK/CONC.

JUNE 2009 PRIOR TO RESURFACING  
 DID NOT FIND DISKS @ CORNERS

10/13/2009  
 Embossed Seal  
 Barnes

A SHEET 4 OF 5  
 2-13(2)

T3N  
R11E

1868 LOCKE 13.2  
1933 SUNNY 3-235 13.2  
1899 WIDOT INVERSE 536-37-17E 22.13  
1992 BARNES A-15(1) 13.20  
1997 BARNES N89-35-24E 13.20  
1997 COMBS A15 13.25  
2004 BARNES N89-34-16E 13.20  
2009 BARNES N89-34-29E 13.20

34

1868 LOCKE 5316.96  
2009 ADJ N89-00-23E 5308.81  
S 1/4 TO S 1/4 COR  
2,220,904.98  
246,004.98  
LODIM 6861

2009 LATHROP #15232 N01-57-41E 2662.14  
2009 ADJ N1-19-06W 2662.24  
1988 WIDOT 6-386 N1-57-37W 2662.16

34

1833 HARRISON 26.40  
1868 LOCKE 26.40  
1933 SUNNY 3-235 26.4  
1988 LEE CSM13-216 26.46  
1988 WIDOT INV 26.40  
1988 WIDOT 6-389 26.40  
1982 BARNES A-13(2) 26.40  
1993 COMBS CSM17-75 26.40  
DISK-DISK 26.46  
1993 LEUENBERGER CSM18-425 26.40  
1993 BARNES A-11(3) 26.40  
1993 LEUENBERGER CSM18-425 26.42  
1997 BARNES #4302 26.42  
2002 REIGEL #4302 26.41  
2004 BARNES N89-33-46E 26.41  
2009 BARNES N89-22-29E 26.47

2.99 SOUTH OF  
S 1/4 TO S 1/4 LINE

CENTER  
TWP

33

2009 ADJ 589-96-16E 28.58  
2004 BARNES REMON 589-56-14E 28.58  
2002 REIGEL #14302 25.97  
1995 BARNES A-11(3) 28.58  
1995 LEUENBERGER CSM18-425 25.97  
1988 LEE 13-216 25.97  
1988 BARNES A-11(2) 25.97  
1988 WIDOT 6-386 26.26  
1944 SUNNY 3-236 33.0  
1921 ELY #6309 26  
1913 OWEN #6336 26  
1868 LOCKE 33.00

2009 ADJ 589-52-18E 5323.92  
1989 DOT 5324.01  
1868 LOCKE 5324.39  
1833 MULLETT 5280  
2009 ADJ 589-58-02E 2666.42  
2004 BARNES REMON 589-58-01E 2666.42  
1997 BARNES 589-58-10E 2664.43  
1995 BARNES A-11(3) 2666.41  
1988 WIDOT 6-386 2673.45  
1868 LOCKE 2665.91  
1833 MULLETT 2640.00

33

1833 HARRISON 39.60  
1868 LOCKE 39.60  
1921 ELY #6309 39.4  
1934 SUNNY 3-236 39.6  
1988 WIDOT 6-386 39.57  
1995 BARNES A-11 39.57  
1997 BARNES N89-04-19E 39.58  
2004 BARNES REMON 39.58  
2009 ADJ. N89-04-46E 39.58  
2009 ADJ NO-59-57W 2661.30

SW TO SE SEC 33  
2009 ADJ N89-52-18E 5323.92  
1989 DOT 5324.01  
1868 LOCKE 5324.39  
1833 MULLETT 5280

32

3

1899 WIDOT 2,220,619.41  
1899 WIDOT 2,220,619.41  
1899 WIDOT 2,220,619.41  
2009 ADJ N89-34-55E 2645.15  
2004 BARNES N89-34-56E 2645.15  
1997 BARNES N89-34-59E 2644.99  
1989 DOT INV N89-20-08E 2644.82  
1988 BARNES 6-388 2645.09  
1933 SUNNY 3-235 2645.4  
1868 LOCKE VARG-44 2645.28

3

1913 OWEN #6336 2280.05  
1868 LOCKE REMON 2574.00  
1833 HARRISON 2574.00  
2009 ADJ 500-49-18E 2587.06  
2004 BARNES REMON 500-49-18E 2587.06

3

1868 LOCKE VARG-44 2651.88  
1868 LOCKE VARG-44 2651.88  
1868 LOCKE VARG-44 2651.88  
1988 BATTERMAN 6-386 2651.06  
1988 LEE CSM13-216 2651.60  
1988 WIDOT 6-386 2651.06  
1988 DOT INV N89-03-53E 2650.96  
1989 COMBS #12283 2651.06  
1993 COMBS CSM17-75 2651.14  
1995 LEUENBERGER CSM18-425 2651.11  
1995 BARNES A-11(3) 2655.41  
1997 BARNES N89-42-01E 2655.49  
2002 REIGEL #14301 & 14302 2651.14  
2004 BARNES 589-42-13W 2655.37  
2009 ADJ N89-42-13E 2655.36

4

1995 LEUENBERGER CSM18-425 26.40  
1995 LEUENBERGER CSM18-425 26.40  
1995 LEUENBERGER CSM18-425 26.40  
1995 LEUENBERGER CSM18-425 26.40  
1995 LEUENBERGER CSM18-425 26.40  
1995 LEUENBERGER CSM18-425 26.40  
1995 LEUENBERGER CSM18-425 26.40  
1995 LEUENBERGER CSM18-425 26.40  
1995 LEUENBERGER CSM18-425 26.40  
1995 LEUENBERGER CSM18-425 26.40

4

1868 LOCKE VARG-25 2659.31  
1913 OWEN #6336 2661.0  
1921 ELY #6309 2661.0  
1988 WIDOT 6-386 2659.86  
1989 COMBS #12283 2659.86  
1995 BARNES A-11(3) 2655.41  
1997 BARNES 589-57-18E 2655.43  
2004 BARNES 589-57-09E 2655.42  
2009 589-57-09E 2655.42

4

1913 OWEN #6306 2559.7  
1921 ELY #6309 2559.7  
1966 BATTERMAN 4-255 2559.26  
1966 THOM #7567 2559.26  
1998 KREBS CSM18-208 2559.26  
1997 COMBS #5616 2559.46  
2000 HOUSE CSM22-397 2559.46  
2001 LUENBERGER CSM24-76 2559.46  
2004 BARNES N00-08-23W 2559.46  
2009 ADJ 50-08-24E 2559.46

5

1833 HARRISON 2546.94  
1868 LOCKE REMON VARG-58 2597.83  
1868 LOCKE REMON VARG-58 2597.83  
1868 LOCKE REMON VARG-58 2597.83  
1868 LOCKE REMON VARG-58 2597.83  
1868 LOCKE REMON VARG-58 2597.83  
1868 LOCKE REMON VARG-58 2597.83  
1868 LOCKE REMON VARG-58 2597.83  
1868 LOCKE REMON VARG-58 2597.83  
1868 LOCKE REMON VARG-58 2597.83  
1868 LOCKE REMON VARG-58 2597.83

*Handwritten signature*  
10/13/2009

A-13(4)

T2N R11E  
PLYMOUTH TWP

NW TO NE SEC 4  
1868 LOCKE 5311.19  
1988 DOT 5310.92  
1989 COMBS 5310.92  
1997 BARNES 5310.92  
2004 BARNES 5310.79  
2009 ADJ 5310.78

5 OF 5 SHEETS