

Paper weight-110# (minimum)

Black nonfading ink required

U.S. PUBLIC LAND SURVEY MONUMENT RECORD

For Public Land Survey Corners In:

WI ADMINISTRATIVE CODE A-E 7.08 REQUIREMENT

T. 2 N. R. 4 E. 4th P.M.

REV 10/23/2004

USMONREC.DWG

CORNER CODE INDEX

PLYMOUTH TWP

ROCK COUNTY WI

IF AVAILABLE

ROCK COUNTY COORDINATES PREFERRED

A	1	2	3	4	5	6	7	8	9	10	11	12	13	14	15	16	17	18	19	20	21	22	23	24	25	A	
B		6				5				4					3					2						1	B
C																											C
D																											D
E																											E
F																											F
G																											G
H																											H
J																											J
K																											K
L																											L
M																											M
N																											N
O																											O
P																											P
Q																											Q
R																											R
S																											S
T																											T
U																											U
V																											V
W																											W
X																											X
Y																											Y
Z																											Z

North _____ Elev. _____

East _____

Hor. Datum _____ Vert. Datum _____

LATITUDE _____ ELLIPS. HT. _____

LONGITUDE _____

NAD83(91) _____ NETWORK ADJ. YR _____

GPS (X) _____ TRAVERSE (X) _____

BASED ON THE FOLLOWING CONTROL: _____

1 2 3 4 5 6 7 8 9 10 11 12 13 14 15 16 17 18 19 20 21 22 23 24 25
PLACE MONUMENT SYMBOL AT PROPER LOCATION ON ABOVE INDEX

CORNER MONUMENT

WITNESS MONUMENT

BEARINGS ARE BASED ON: -----

FIELD BOOK _____ PAGE # _____

SHEET 1 OF 5

SHOW A PLAN VIEW DRAWING DEPICTING THE CORNER MONUMENT AND SURROUNDING PHYSICAL FEATURES, INCLUDING THE EXCAVATION AREA AND DEPTH.

PLANNING & ZONING COMMITTEE ADOPTED THIS FORM ON 12/2/1982

CORNER CODE A-23(4)

PL512 N1/4CORSEC1

(B) Describe any record evidence, monument evidence, occupational evidence, testimonial evidence or any other material evidence you considered, and whether the monument was found or placed.

- 1833 MULLETT VAR 7-55 WEST ON SOUTH SIDE OF SECTION 36 T3N R11E**
- 2640 SET QUARTER SECTION POST IN PRAIRIE AND MADE MOUND**
 - 5280 SET POST CORNER SECTIONS 35 & 36 BUR OAK 10 N70E 411.84' BUR OAK 8 N64 1/2 W 557.7' LAND ROLLING SECOND RATE PRAIRIE.**
- 1866 LOCKE PLYMOUTH TWP REMONUMENTATION FIELD NOTES. PG 34 WEST ON SOUTH LINE SECTION 1.**
- 2668.38 INTERSECTED 1/4 LINE FOR TOWN 3 (CENTER) 1.98' SOUTH OF COR. FOUND LARGE LIMESTONE IN CENTER OF HIGHWAY AND IN LINE OF N AND S FENCES.**
 - 5334.12 INTERSECTED WEST BOUNDARY 14.52' SOUTH OF COR. FOUND BT IN SEC 2**
 - 5330.82 INTERSECTED COR FOR TOWN 3 FOUND BT IN SEC 35 AND STUMP OF BT IN SEC 36. COR IN CENTER OF HIGHWAY.**
 - 2667.06 SET 1/4 COR 1.32' EAST OF 1/4 COR FOR TOWN 3 FOR FIRST HALF MILE VAR CORRECTED 6-58, FOR LAST HALF MILE VAR CORRECTED 7-11 1/4 MONUMENT MARKED WITH FIGURE 1 ON SOUTH FACE AUG 27, 1868**
- 1933 SUNNY VOL 3 PG 234 @ N 1/4 COR SEC 1 SET 1" X 36" PIPE IN CONCRETE PAVEMENT. 1.4' NORTH OF CENTER OF CONCRETE PAVEMENT IN LINE WITH S. FENCE. SHOWS A DISTANCE OF 2644.7 FROM THE N 1/4 COR SEC 1 TO THE FENCE INTERSECTION AT THE CENTER OF SECTION 1. SHOWS THE N 1/4 COR SEC 1 MONUMENT IS 1.32' EAST OF THE SOUTH QUARTER CORNER OF SECTION 36.**
- 1970 BATTERMAN JR. VOL 4 PG 298 SHOWS A 3/4" PIN @ N 1/4 COR SEC 1 WITH REFERENCE MONUMENTS. DOES NOT STATE ANYTHING ABOUT THE CORNER.**
- 1988 BARNES A-23 & Z-23 @ N 1/4 COR SEC 1 FOUND 3/4" REROD AND 4" DEEP FOUND PIPE IN CONCRETE PAVEMENT. 5' 3" DEEP FOUND CUT LIMESTONE. BROKE TOP 25" OF STONE. MEASURED TO BOTTOM AND THEN PUT TOP BACK ON. PLACED BENT PIPE HORIZONTALLY BY THE STONE. FOUND 15" X 6" 2 1/2" LIMESTONE @ S 1/4 COR SEC 36 1.26' (MAP-1.26') TO THE WEST. STONE IS 1.82 SOUTH OF THE PIPE. STONE IS AT THE CENTER OF THE PAVEMENT. IT APPEARS FROM THE EXCAVATION THAT SUNNY NEVER DUG FOR THE CORNER. ACCEPTED FOUND CUT LIMESTONE. USING DOT CONTROL THE COORDINATES FOR THE S 1/4 COR SEC 36 ARE N/S 246,125.79 E/W 2,231,251.80**
- 1988 BARNES VOL 6 PG 389 FROM N 1/4 COR SEC 1 IT IS N89-52-21E 2666.95 TO NE COR SEC 1 & FROM N 1/4 COR SEC 1 IT IS N89-56-08W 2667.20 TO NW COR SEC 1.**
- 1989 WIDOT MAP # 16703 PROJ. #1704-03-22 @ N 1/4 COR SEC 1 1/2" REINFORCING ROD 246,125.44; 2,231,252.99) N73-38-58W 1.24 TO 1/2" REINFORCING ROD AT S 1/4 COR SEC 36 (246,125.79; 2,231,251.80**
- 1992 BARNES A-23(1) & Z-21(1)(CENTER TWP) CORNER AS DESCRIBED IN PREVIOUS U.S. PUBLIC LAND SURVEY MONUMENT RECORD IS BEING PERPETUATED. TIES TO NEW DOT REFERENCE MONUMENTS & OLD REFERENCE MONUMENTS. TIES TO CUT LIMESTONE. MONUMENT WILL BE DESTROYED BY CONSTRUCTION. S 1/4 COR SEC 36 WHICH IS A CUT L.S. IS N76-33-18W 1.28 FROM N 1/4 COR SEC 1 PLYMOUTH TWP.**
- 1992 BARNES A-23(2) FOUND DISK AT THE S 1/4 CORNER OF SECTION 36 BUT NOTHING AT THE N 1/4 CORNER OF SECTION 1. TIES FROM DOT REFERENCE MONUMENTS TO LIMESTONE, DOT DISK, OLD PIPE, & OLD REROD. N76-33-18W 1.28' TO S 1/4 COR SEC 36 CENTER TWP**

Donald Barnes
10/09/09

SHEET 1 OF 5
CORNER CODE A-23(4)

PL512 N1/4CORSEC1

- 1999 LATHROP CSM VOL 22 PG 323 FD WIDOT DISK @ SE & S 1/4 COR SEC 36. 2668.37 BETWEEN DISKS
- 2002 COMBS #14515 2662.75 FROM SW COR SEC 36 TO S 1/4 COR SEC 36 & 89.50 TO A SET REROD ON THE N/S 1/4 LINE OF SEC 36.
- 2003 BARNES A-23(3) FD DOT REFERENCE DISK MONUMENTS IN CONCRETE. FD DOT DISK IN PAVEMENT AT THE S 1/4 COR SEC 36 CENTER TWP. THIS IS IN HARMONY TO RECORD REFERENCE TIES. FD DISK PERPETUATED FOUND ACCEPTED CUT L.S. & USED MY 1992 OBSERVATIONS TO DETERMINE POSITION OF N 1/4 COR SEC 1 PLYMOUTH TWP.
- 2004 LEUNBERGER CSM VOL 27 PG 196 FD ALUM @ S 1/4, SE, & E 1/4 CORNERS OF SEC 36. NB9-36-24W 2668.37 FROM SE TO S 1/4 COR SEC 36 & ND-20-16W 2666.07 FROM SE COR SEC 36 TO E 1/4 COR SEC 36.
- 2004 BARNES PLYMOUTH TWP PROJ. FROM N 1/4 COR SEC 1 IT IS SB9-36-35E 2666.96 TO NE COR SEC 1 & IT IS SB9-17-58E 2667.37 FROM NW TO N 1/4 COR SEC 1. SB9-36-11E 2668.20 FROM S 1/4 COR SEC 36 TO SE COR SEC 36, SB9-18-28E 2662.85 FROM SW COR SEC 36 TO S 1/4 COR SEC 36
- 2005 COMBS CSM VOL 28 PG 159 FD PK @ N 1/4 COR SEC 1 & WIDOT DISK @ NW COR SEC 1. 2667.18 BETWEEN CORNERS
- 2005 LATHROP #15224 FROM DOT MON @ NW COR SEC 1 TO FD PK @ N 1/4 COR SEC IS 2667.19, N 1/4 SEC 1 TO FD COTTON GIN PIN @ S 1/4 COR SEC 1 IS SD-27-41E. FROM N 1/4 COR SEC 1 TO DOT MON @ S 1/4 COR SEC 36 IS NB6-49-30W 1.14. FROM PK @ N1/4 COR SEC 1 TO DOT MON @ NE COR SEC 1 IS NB9-35-29W 2667.26
- 2008 COMBS CSM VOL 32 PG 179 FD DOT DISK @ S 1/4 & SW CORNERS OF SEC 36. 2662.72 BETWEEN DISKS.
- 2008 COMBS CSM VOL 32 PG 220 FD DOT DISK @ S 1/4 & SW CORNERS OF SEC 36. 2662.72 BETWEEN DISKS.
- 2009 BARNES PRIOR TO RESURFACING PROJECT I FOUND DISK IN CONC. @ NEAR COR. FD ALL 4 WIDOT REFERENCE MONUNUMENTS. ELEVATIONS INDICATE THE OLD REFERENCE PIPES ARE UNDER FILL MATELAL. ACCEPTED FD LIMESTONES.
- 2009 BARNES ADJUSTMENT SB9-36-31E 2666.94 FROM N 1/4 COR SEC 1 TO NE COR SEC 1, SB9-18-07E 2667.45 FROM NW COR SEC 1 TO N 1/4 COR SEC 1. SB9-18-24E 2662.93 FROM SW COR SEC 36 TO S 1/4 COR SEC 36, SB9-36-08E 2668.17 FROM S 1/4 COR SEC 36 TO SE COR SEC 36.

AFTER RESURFACING SET FD PK/FLASHER STAMPED "WIDOT SURVEY". IT IS IN HARMONY WITH TIES OF RECORD WHICH PERPETUATES THE FD CUT LIMESTONE.

C) Was the corner restored through acceptance of (1) an obliterated evidence location, or, (2) a found perpetuated location?

ACCEPTED FD LIMESTONES. IN NEW ASPHALT FD A PK/FLASHER SET ABOUT 0.05' BELOW SURFACE. FLASHER IS STAMPED "WI DOT SURVEY"

Donald Barnes
10/09/09

SHEET 2 OF 5
CORNER CODE A-23(4)

PL512 N1/4CORSEC1

D) Describe any material discrepancy between the location of the corner as restored or reestablished and the location of that corner as previously restored or reestablished by distance and direction. Show the discrepancy on the plan view drawing under (a), above. Show the distances between the corner as previously restored or reestablished and (1) the corner as restored or reestablished, and (2) to at least 4 of the witness monuments shown on the drawing in (a), above.

THE DISCREPANCY IS SHOWN ON THE MAP

(E) Was the corner reestablished through lost corner proportionate methods? If so, show the method, including the directions and distances to other public land survey corners used as evidence or used for proportioning the corner location.

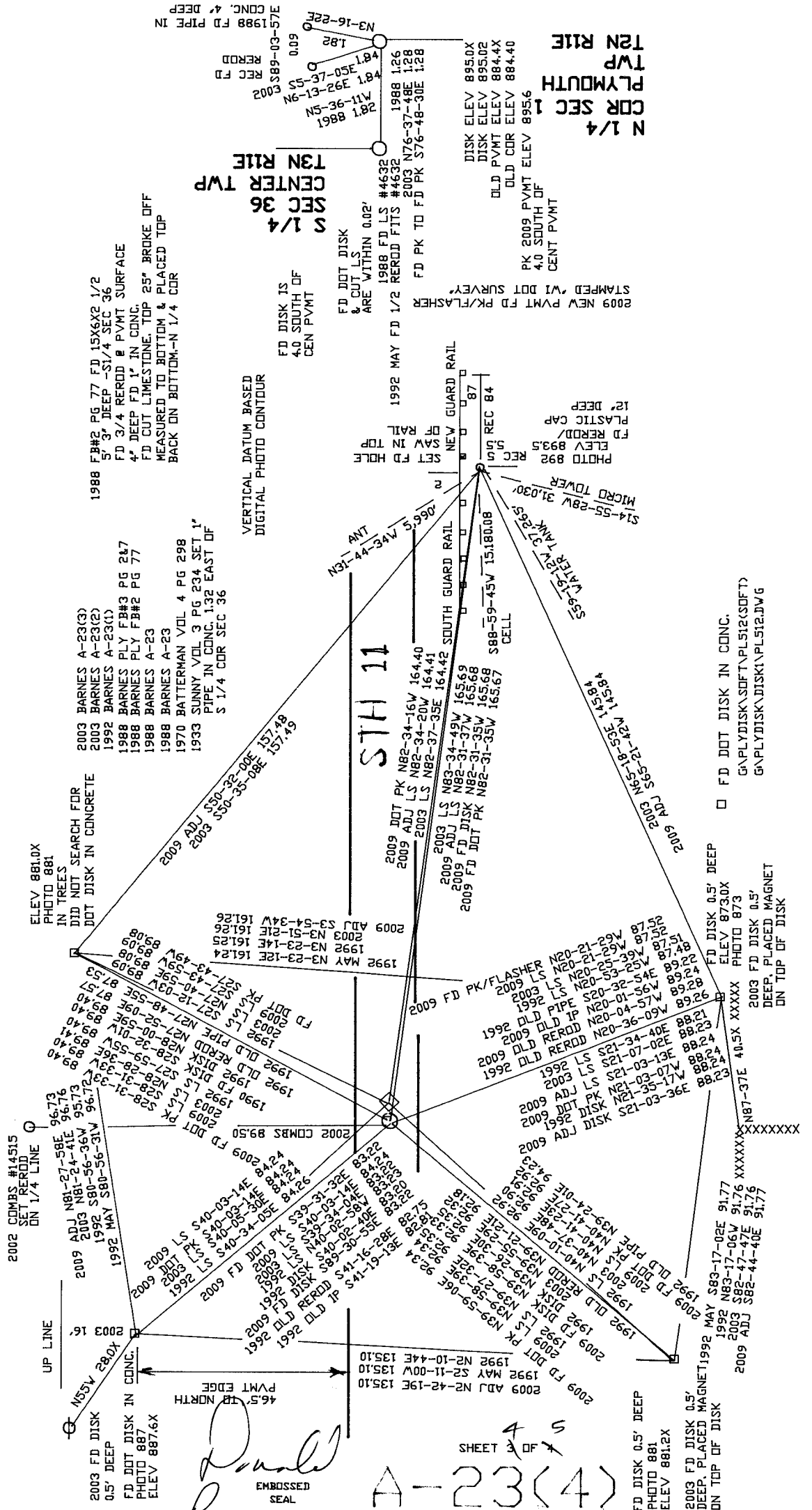
I, **Donald Barnes**, hereby certify that the corner location as identified by the corner code index was determined by me under my direction and control and that this U.S. Public Land Survey Monument Record is correct and complete to the best of my knowledge and belief.

Seal
Donald Barnes
10/09/2009

Emboss

SHEET 3 OF 4

CORNER CODE A-23(4)
A-E 7.08 REQUIREMENT



Donald Barnes
 EMBOSSED SEAL
 SHEET 4 OF 4
 A-23(4)
 10/09/2009

N 1/4
 COR SEC 1
 PLYMOUTH TWP
 T2N R1E

S 1/4
 SEC 36
 CENTER TWP
 T3N R1E

FD DISK 0.5' DEEP
 PHOTO 881
 ELEV 881.2X
 2003 FD DISK 0.5'
 DEEP, PLACED MAGNET
 ON TOP OF DISK

FD DOT DISK IN CONC.
 G:\PLYDISK\SOFT\PL512(SOFT)
 G:\PLYDISK\DISK\PL512.JWG

FD DISK 0.5' DEEP
 ELEV 873.0X
 PHOTO 873
 2003 FD DISK 0.5'
 DEEP, PLACED MAGNET
 ON TOP OF DISK

MAY S83-17-02E 91.77
 1992 N83-17-06W 91.76
 2003 S82-47-47E 91.76
 2009 ADJ S82-44-40E 91.77

2009 ADJ N87-37E 40.5X
 XXXXXX
 XXXXXX
 XXXXXX

PHOTO 892
 ELEV 893.5
 FD REROD/
 PLASTIC CAP
 12" DEEP

REC 84
 SET TO HOLE
 OF 2 1/2"

REC 87
 SET TO HOLE
 OF 2 1/2"

REC 84
 SET TO HOLE
 OF 2 1/2"

REC 87
 SET TO HOLE
 OF 2 1/2"

REC 84
 SET TO HOLE
 OF 2 1/2"

REC 87
 SET TO HOLE
 OF 2 1/2"

REC 84
 SET TO HOLE
 OF 2 1/2"

REC 87
 SET TO HOLE
 OF 2 1/2"

1988 BARNES 6-389 3.28
 2009 BARNES N89-24-25E 3.28
 2004 BARNES N89-24-13E 3.28
 2002 COMBS #15224 S89-56-59E 3.33
 1997 BARNES S89-24-30W 3.30
 1992 BARNES A21 3.28
 1989 WIDOT N88-46-52E 3.29
 1977 BARNES 5-362 3.3
 1933 SUNNY 3-235 3.3
 1868 LOCKE #6828 3.3
 1868 LOCKE 3.30
 1833 HARRISON 3.3

2660.38
 2660.68
 1979 SCHROEDER 2661.58
 2009 BARNES NO-22-45W 2660.38
 988 BARNES 6-389 N1-01-11W 2660.68

WIDOT 1989 69 128.50 126.50 128.50 126.50

2009 BARNES S89-18-24E 2662.93
 2008 COMBS CSM 2662.72
 2004 BARNES S89-18-28E 2662.85
 2002 COMBS #14515 N89-51-13W 2652.75
 1997 BARNES S89-18-19E 2662.64
 1989 WIDOT INVERSE S89-56-30E 2662.74
 1989 WIDOT 2662.77
 1988 BARNES 6-389 S89-56-30E 2662.72
 1933 SUNNY 3-234&235 2662.58
 1868 LOCKE 2662.44
 1833 MULLETT VAR7-55 2640

36

1877 RUGER 2616.90
 1868 LOCKE V7-10 2621.52
 1933 SUNNY 2621.56
 1988 BARNES 6-389 S0-41-45E 2621.72
 2005 COMBS CSM28-159 2667.18
 2009 BARNES S89-18-07E 2667.45
 2002 COMBS #14515 S0-27-41E 2667.20
 1988 BARNES 6-389 S89-56-08E 2667.22
 1989 WIDOT INVERSE S89-56-09E 2667.22
 1997 BARNES S89-17-58E 2667.12
 2004 BARNES S89-18-11E 2667.37
 2005 COMBS CSM28-159 2667.18
 2009 BARNES S89-18-07E 2667.45

SEC 1

PLYMOUTH TWP

2009 BARNES NO-28-39W 5329.74
 2002 COMBS #14515 N1-06-25W 5239.96
 2002 COMBS #14515 S75-59-08E 1.27
 2004 BARNES S75-59-08E 1.27
 1997 BARNES S73-01-51E 1.24
 1992 BARNES A23 1.19
 1989 WIDOT INVERSE S73-36-38E 1.24
 1988 A23 1.16
 1988 BARNES 1.28
 1988 BARNES 1.32
 1933 SUNNY 3-234 1.32
 1868 LOCKE 1.32

CENTER TWP
 T3N R11E

2009 BARNES S89-36-08E 2668.17
 2008 COMBS CSM32-179&220 2662.72
 2004 BARNES S89-36-11E 2668.20
 2004 LEUNBERGER CSM27-196 2668.37
 1999 LATHROP CSM22-323 2668.37
 1997 BARNES S89-36-00E 2668.08
 1989 WIDOT 2668.17
 1989 WIDOT INVERSE N89-45-49E 2668.14
 1988 BARNES 6-389 N89-45-46E 2668.14
 1933 SUNNY 3-234 2668.52
 1868 LOCKE 2668.38
 1833 MULLETT VAR7-55 2640

36

1868 LOCKE VAR6-58 2667.06
 1933 SUNNY 3-234 2667.2
 1988 BARNES 6-389 N89-45-21E 2666.95
 1989 WIDOT INVERSE N89-45-21E 2666.95
 2002 COMBS #14515 S89-35-29E 2667.26
 2004 BARNES S89-36-35E 2666.96
 2009 BARNES S89-36-31E 2666.94

SEC 1

T2N R11E

WIDOT 1989 80 246.125 246.125 246.125 246.125

2009 BARNES S0-28-36E 5290.88

JANESVILLE
 TWP

SEC 31

2009 ADJ S89-43-24E 2619.19
 2005 COMBS CSM29-260 2619.2
 2002 COMBS CSM25-38 2619.0X
 1989 DOT N89-30-20E 2619.70
 1988 BARNES 6-378 N89-37-32E 2619.46
 1833 MULLETT 2600.4

2009 BARNES S0-04-37E 2656.04
 1933 SUNNY 2657.08
 1868 LOCKE VAR 7-07 2657.02
 1854 McVEAN VOL1-23 2655.04
 1854 McVEAN VOL1-23 2655.04
 1833 MULLETT 2640

SEC 6
 ROCK TWP

2009 BARNES 50-04-37E 2656.04
 1933 SUNNY 2657.08
 1868 LOCKE VAR 7-07 2657.02
 1854 McVEAN VOL1-23 2655.04
 1854 McVEAN VOL1-23 2655.04
 1833 MULLETT 2640

1933 SUNNY 3-234 2629.45
 2009 ADJ S89-43-27E 2633.49

109-2009
 Donald Lane