

Paper weight-110# (minimum) Black nonfading ink required

U.S. PUBLIC LAND SURVEY MONUMENT RECORD

For Public Land Survey Corners In:
 T. N. R. 11 E. 4th P.M.

WI ADMINISTRATIVE CODE A-E 7.08 REQUIREMENT
 REV 10/23/2004 USMONREC.DWG

CORNER CODE INDEX

A	1	2	3	4	5	6	7	8	9	10	11	12	13	14	15	16	17	18	19	20	21	22	23	24	25	A
B		6				5				4				3				2				1				B
C																										C
D																										D
E																										E
F																										F
G																										G
H																										H
J																										J
K																										K
L																										L
M																										M
N																										N
O																										O
P																										P
Q																										Q
R																										R
S																										S
T																										T
U																										U
V																										V
W																										W
X																										X
Y																										Y
Z																										Z

PORTER TWP

ROCK COUNTY WI

IF AVAILABLE
 ROCK COUNTY COORDINATES PREFERRED

North _____ Elev. _____

East _____

Hor. Datum _____ Vert. Datum _____

LATITUDE _____ ELLIPS. HT. _____

LONGITUDE _____

NAD83(91) _____ NETWORK ADJ. YR _____

GPS (X) _____ TRAVERSE (X) _____

BASED ON THE FOLLOWING CONTROL:

PLACE MONUMENT SYMBOL AT PROPER LOCATION ON ABOVE INDEX

CORNER MONUMENT

WITNESS MONUMENT

BEARINGS ARE BASED ON: _____

FIELD BOOK _____ PAGE # _____

SHEET 1 OF 4

SHOW A PLAN VIEW DRAWING DEPICTING THE CORNER MONUMENT AND SURROUNDING PHYSICAL FEATURES, INCLUDING THE EXCAVATION AREA AND DEPTH.

PLANNING & ZONING COMMITTEE ADOPTED THIS FORM ON 12/2/1982

CORNER CODE V-25(1)

PO613 SE COR SEC25

(B) Describe any record evidence, monument evidence, occupational evidence, testimonial evidence or any other material evidence you considered, and whether the monument was found or placed.

1833 (SEP 20) MULLETT & BRINK NORTH ON EAST SIDE SECTION 36 V8 40'E T4N 11E

2385.9 BUR OAK 14 IN DIAMETER
2640 SET QUARTER SECTION POST BUR OAK 14 S45W
33' BUR OAK 12 N36W 25.08'
3135 ENTER PRAIRIE
5280 SET POST CORNER SECTIONS 25 & 36 BUR
OAK 14 S25W 305.58' BUR OAK 12 N85W
188.1' LAND ROLLING SECOND RATE FIRST 1/2
THINLY TIMBERED WITH BUR WHITE AND BLACK
OAK GOOD OBSERVATIONS AT THIS CORNER
VAR B 10'

1833 (SEP 20) MULLETT & BRINK NORTH ON EAST SIDE SECTION 25 T4N R11E 4TH MERIDIAN MT.

2640 SET QUARTER SECTION POST BUR OAK 6
N34W 82.5' WHITE OAK 12 N31E 126.72
2772 LEAVE PRAIRIE AND ENTER WOODLAND
5280 SET POST CORNER SECTIONS 24 & 25
BUR OAK 10 S35W 135.3' BUR OAK 10 N76E
168.3'
LAND ROLLING SECOND RATE LAST HALF
THINLY TIMBERED WITH WHITE BLACK & BUR
OAK ELM AND WHITE MAPLE THE REST PRAIRIE

1833 (OCT 29) HARRISON EAST ON RAND BET SECS 25 & 36 T4N R11E

379.5 TRAIL CRS NE
2640 TEMPY 1/4 SEC COR
5332.8 INT E BDY IN E EDGE OF PRAIRIE 26.4' SOUTH
OF POST LAND GENTLY ROLLING 1ST RATE
PRAIRIE GROWTH GRASS & WEEDS
WEST BET SECS 25 & 36
2666.4 QUARTER SEC. COR. {SET A POST AND RAISED
A MOUND ON ROLLING GROUND
5332.8 SEC COR

1834 (APR 4) HARRISON EAST BETWEEN SECS 30 & 31

330 LEFT PRAIRIE
1358.94 BURR O 20 IN DIAM
2112 TRAIL NORTH
2310 TO SUMMIT OF BLUFF
2445.3 WO 18 IN DIAM
2475 INT. RIGHT BANK OF RIVER AT THE FOOT OF
BLUFF SET MEANDER POST {WO 12 S5W 52.8'
W.O. 20 N62W 80.52' LAND ROLLING 2ND RATE
WITH BURR & W.O. TIMBER UNDERGROWTH ?
GRASS & WEEDS APRIL 4TH 1834

1836 (AUG) BURNHAM WEST RANDOM BETWN SECS 30 & 31

2084.28 TO LEFT BANK ROCK RIVER
2632.74 INT. RIGHT BANK 9.24' SOUTH MP FIRST RATE
BUR OAK OPENINGS
EAST CORRECTED BETWN SEC 31 & 30
548.46 SET MP ON LEFT BANK BUR OAK 10 N21E
21.78' OAK 8 S4E 25.74'
2632.74 TO CORNERS

**1854 TWP RD REC PORTER TWP BK 1 PG 6 BEGINNING AT THE 1/4
POST ON THE WEST LINE OF SEC 19 T4N R12E (STH 184);
THENCE RUNNING SOUTH ON THE SECTION LINE 1337.82';
THENCE EAST 446.82'; THENCE S18 1/2E 396'; THENCE S3W
264' TO RED OAK TREE; THENCE S17 3/4W 264' TO BURR
OAK; THENCE S1E 764.94'; THENCE S11W 502.92' TO BURR
OAK TREE; THENCE S6 3/4W 326.04'; THENCE S17E 1158.3';**

SHEET 1 OF 34

CORNER CODE V-25(1)

Donald Barnes

11/02/2009

PO613 SE COR SEC25

- THENCE S30 $\frac{3}{4}$ W 741.84'; THENCE S41 $\frac{3}{4}$ W 1247.4' TO THE WEST LINE OF T4N R12E (THENCE SOUTH ON THE TOWN LINE 766.92', THENCE S42 $\frac{1}{2}$ W 924';[SEC 30 FULTON] THENCE S3- $\frac{1}{4}$ W ? CHAINS; THENCE S32 $\frac{1}{2}$ E 1013.1' TO THE W. LINE OF T4N R12E; THENCE S. ON THE TOWN LINE 4746.06' TO THE SW COR OF SEC 31 OF T4N R12E)
- 1870 RUGER #1431 & VOL 2 PG 34 FD OLD STAKE & BEARING TREE. SET IRREGULAR POINTED HARD HEAD STONE 18X9X7 POINT UP & SURROUNDED IT WITH 4 HARD HEAD STONES. 2453.72 TO MP
- 1974 LEE VOL 5 PG 19 FD HH SURROUNDED BY 4 HH. REF. SAME.
- 1974 SCHROEDER CSM VOL 4 PG 171 STATES NOTHING ABOUT MON. 2624.20 FROM E $\frac{1}{4}$ COR SEC 36 TO NE COR SEC 36 PORTER TWP.
- 1977 BARNES VOL 5 PG 249 FD PK WITH FLASHER & REF. SAME.
- 1977 BARNES VOL 5 PG 267 2650.1 TO W $\frac{1}{4}$ COR SEC 30
- 1977 BARNES VOL 5 PG 274 2680.20 TO S $\frac{1}{4}$ COR SEC 25 PORTER TWP.
- 1977 BARNES R-1 CALLS FOR TRAVERSE TO MON. & REC. DISTANCES.
- 1977 SCHROEDER #3626 STATES NOTHING ABOUT MON.
- 1979 SCHROEDER #3628 STATES NOTHING ABOUT MON. NOO-27E 2153.10 ALONG EAST LINE OF SEC 25, WEST 700.10 ALONG SOUTH LINE OF SEC 25.
- 1981 BARNES VOL 6 PG 202 FD PK, 2' DEEP FD LS 14X10X6 SURROUNDED BY 4 HHS. REPLACED WITH ALUM. MON. & REF. SAME. 2' WEST OF CENTER N/S PVMT & ON LINE WITH E/W CENTER OF PVMT.
- 1981 COMBS CSM VOL 10 PG 410 SE COR SEC 25 ALUM. ANGLE @ SE COR SEC 25 FROM S $\frac{1}{4}$ COR SEC 25 TO E $\frac{1}{4}$ COR SEC 25 PORTER TWP IS 89-33-00. SE COR OF LOT IS WITHIN 40" OF THE SEC COR.
- 1981 AERO-METRIC PHOTO CONTROL NGVD 29 ELEVATION 863.27'
- 1982 BARNES VOL 6 PG 240 #6625, 11544, 11545, 11546 FOLLOWING INFORMATION FROM WIDOT PLANS PROJECT 5972-01-22 SHEET 4.2 ALUM. MON. 283,350.35; 2,233,325.65
- 1982 BARNES VOL 6 PG 271 TIED INTO AERO-METRIC PHOTO CONTROL. FD ALUM. 283,350.43; 2,233,326.46 ELEV. 863
- 1982 DOT #6625, 11544, 11545, 1146 FD ALUM. NAD27 COORDINATES OF 283,350.35; 2,233,325.65. INVERSE BETWEEN SW & W $\frac{1}{4}$ COR SEC 30 IS S00-52-20E 2649.94' TO SW COR SEC 30.
- 1989 SCHROEDER CSM VOL 14 PG 112 STATES NOTHING ABOUT MON
- 1995 BARNES V-1(2) & V-25 (PORTER TWP) FD ALUM MON & TIES. THE MON. WILL BE DISTURBED BY RD CONSTRUCTION. 1.5 WEST OF N/S CENTER OF PVMT.
- 2000 RIESOP CSM VOL 23 PG 340 SE COR SEC 25 FD PK NAIL. FD MATCHING MON LOCATION FROM TIES.
- 2002 COMBS CSM VOL 25 PG 414 PK 2679.95 TO ALUM @ N $\frac{1}{4}$ COR SEC 36
- 2006 BARNES V-1(3) FD ALUM. MON. & REFERENCE MONUMENTS.

Donald Rames

11/02/2009

SHEET 2 OF 4
CORNER CODE V-25(1)

C) Was the corner restored through acceptance of (1) an obliterated evidence location, or, (2) a found perpetuated location?

ACCEPTED FD REFERENCE MONUMENTS

D) Describe any material discrepancy between the location of the corner as restored or reestablished and the location of that corner as previously restored or reestablished by distance and direction. Show the discrepancy on the plan view drawing under (a), above. Show the distances between the corner as previously restored or reestablished and (1) the corner as restored or reestablished, and (2) to at least 4 of the witness monuments shown on the drawing in (a), above.

(E) Was the corner reestablished through lost corner proportionate methods? If so, show the method, including the directions and distances to other public land survey corners used as evidence or used for proportioning the corner location.

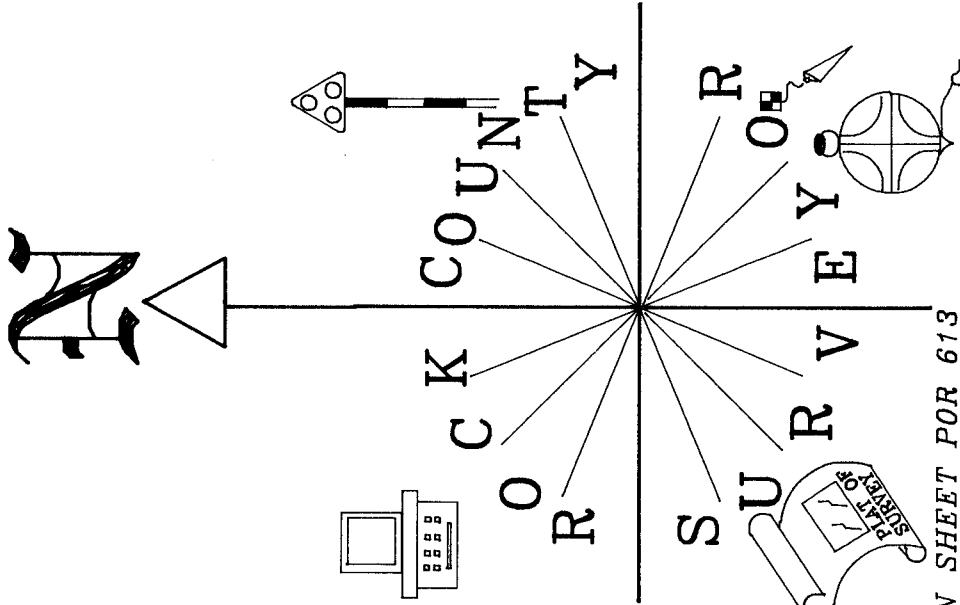
I, **Donald Barnes**, hereby certify that the corner location as identified by the corner code index was determined by me under my direction and control and that this U.S. Public Land Survey Monument Record is correct and complete to the best of my knowledge and belief.

Seal
Donald Barnes
Emboss

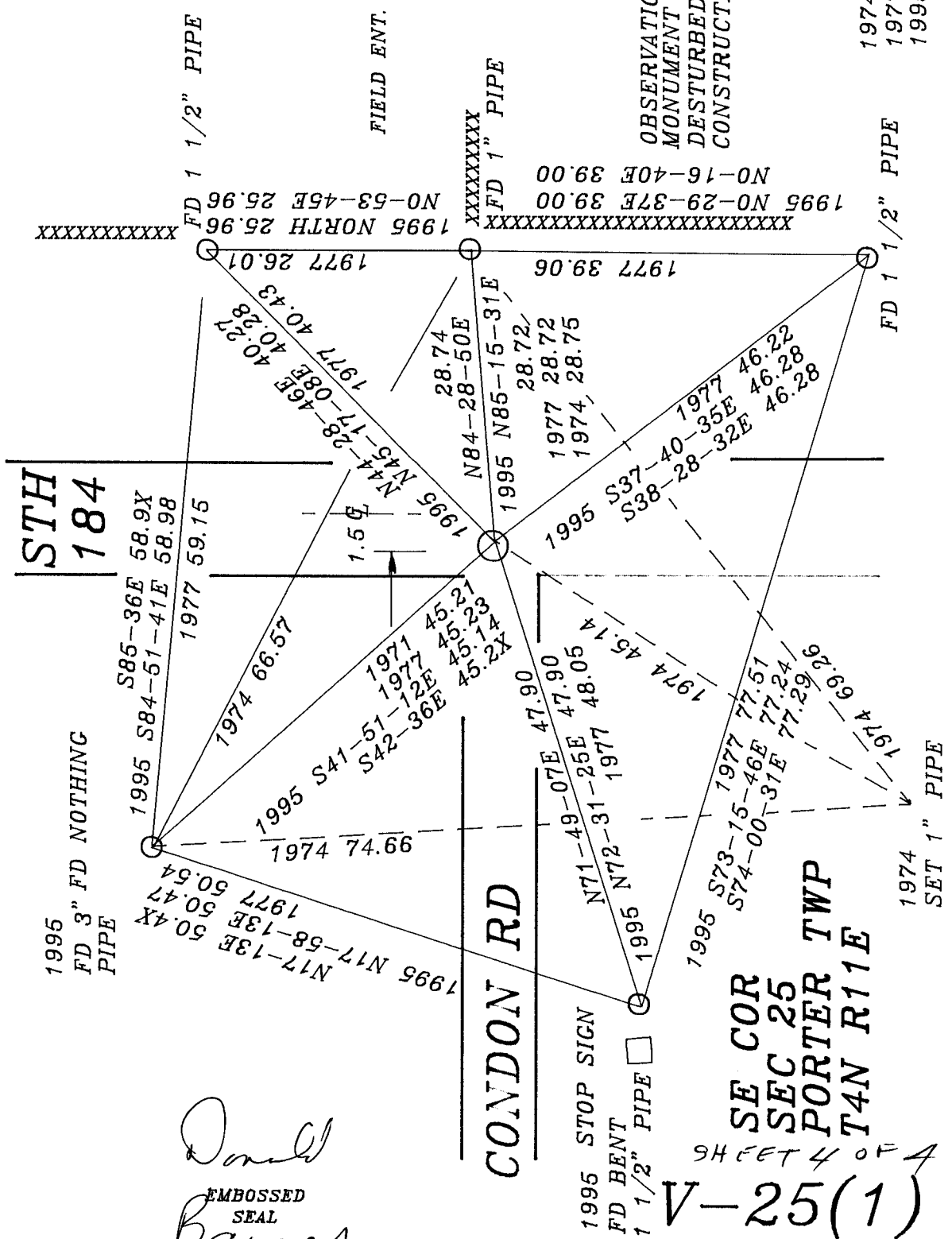
SHEET 3 OF 4

11/02/2009

CORNER CODE **V-25(1)**
A.E. 7.08 REQUIREMENT



NOT TO SCALE
 1974 LEE VOL 5 PC 19
 1977 BARNES VOL 5 PC 249
 1995 BARNES V-25(1)



Donald Barnes
 EMBOSSED SEAL

11/02/2009

SE COR
 SEC 25
 PORTER TWP
 T4N R11E
 SHEET 4 OF 4
 V-25(1)