

Paper weight-110# (minimum)

Black nonfading ink required

U.S. PUBLIC LAND SURVEY MONUMENT RECORD

For Public Land Survey Corners In:

WI ADMINISTRATIVE CODE A-E 7.08 REQUIREMENT

T. 4 N. R. 11 E. 4th P.M.

REV 10/23/2004

USMONREC.DWG

CORNER CODE INDEX

PORTER TWP

ROCK COUNTY WI

IF AVAILABLE
ROCK COUNTY COORDINATES PREFERRED

	1	2	3	4	5	6	7	8	9	10	11	12	13	14	15	16	17	18	19	20	21	22	23	24	25		
A																											A
B																											B
C																											C
D																											D
E																											E
F																											F
G																											G
H																											H
J																											J
K																											K
L																											L
M																											M
N																											N
O																											O
P																											P
Q																											Q
R																											R
S																											S
T																											T
U																											U
V																											V
W																											W
X																											X
Y																											Y
Z																											Z

North _____ Elev. _____

East _____

Hor. Datum _____ Vert. Datum _____

LATITUDE _____ ELLIPS. HT. _____

LONGITUDE _____

NAD83(91) _____ NETWORK ADJ. YR _____

GPS (X) _____ TRAVERSE (X) _____

BASED ON THE FOLLOWING CONTROL:

PLACE MONUMENT SYMBOL **◆** AT PROPER LOCATION ON ABOVE INDEX

◆ CORNER MONUMENT

○ WITNESS MONUMENT

(a)

BEARINGS ARE BASED ON: _____

FIELD BOOK _____ PAGE # _____

SHEET 1 OF 3

SHOW A PLAN VIEW DRAWING DEPICTING THE CORNER MONUMENT AND SURROUNDING PHYSICAL FEATURES, INCLUDING THE EXCAVATION AREA AND DEPTH.

PLANNING & ZONING COMMITTEE ADOPTED THIS FORM ON 12/2/1982

CORNER CODE E-9(2)

PO525

SECORSEC 5

(B) Describe any record evidence, monument evidence, occupational evidence, testimonial evidence or any other material evidence you considered, and whether the monument was found or placed.

1833 HARRISON (NOV) T4N R11E 4TH MER. NORTH
 BET. 8 & 9
 231.00 LEAVE PRAIRIE
 2640.0 QUARTER SEC COR
 {BURR OAK 12 N58W 87.12'; BURR OAK
 10 S62W 198.0' {BURR OAK 12; BURR
 OAK 10} MARKED
 5115.0 CREEK 19.8' CRS S.E.
 5280.0 SET COR TO SECS 4,5,8,9
 BURR OAK 12 N84E 119.46'; RED OAK 12
 S56E 140.58'; BURR OAK 10 N54W 82.5'
 LAND ROLLING 2ND RATE WITH HEAVY
 BURR & WHITE OAK TIMBER ?? ??? GRASS
 & WEEDS

1833 HARRISON (OCT/NOV) T4N R11E 4TH MER. EAST BET. SECS.
 4 & 9
 2640.0 TEMPY 1/4 SEC COR.
 2871.0 CREEK 19.8' CREEK 19.8' CRS N.E.
 5304.42 INT. E BDY 39.60' SOUTH OF POST LAND
 ROLLING 2ND RATE TIMBER ?? RED & BURR OAK
 ?? ??? ??? OF WEEDS
 WEST COR WEST BET 4 & 9
 2652.21 QUARTER SEC. COR. RED OAK 12 N41E 17.82;
 RED OAK 12 S69E 34.98'

1833 HARRISON (NOV 4TH) T4N R11E 4TH MER. EAST BET. SECS.
 5 & 8
 2640.00 TEMPY 1/4 SEC. COR.
 3960.0 LEAVE PRAIRIE & ENTER TIMBER
 4290.0 CREEK 16.5' CRS S.E.
 5319.60 INT. E BDY 11.88' SOUTH OF POST
 LAND 1ST 3960' ROLLING HANDSOME 1ST
 RATE PRAIRIE SOIL GOOD RUN OF MILL
 WOODLAND WITH RED BURR & WHITE OAK
 WEST COR. WEST BET. SECS. 5 & 8
 2659.8 QUARTER SEC COR SET POST & RAISED
 MOUND OF EARTH & SOD
 5319.60 SEC COR.

1833 (NOV) HARRISON T4N R11E 4TH MER. NORTH BET. SECS. 4
 & 5
 2640.00 QUARTER SEC. COR. BURR OAK 10 EAST
 85.8' NO OTHER NEAR.
 5280.00 INT. N. BDY 112.20' EAST OF POST {BURR
 OAK 12 S73E 75.24'; BURR OAK 12 S41W
 130.68'
 LAND ROLLING 2ND RATE TIMBER SMALL
 AND SCATTERED CONSISTING MOSTLY OF
 BURR OAK

1873 LEE VOL 2 PG 103 FD STAKE & STONES & STUMPS OF SE BT
 WHICH SHOULD BE BL OAK INSTEAD OF BURR OAK. VAR 8-37
 2696.10 TO S 1/4 COR SEC 5, NORTHERLY VAR 7-10' 1165.56'
 TO RD

1892 UNKNOWN VOL 6 PG 320 (BARNES) FIELD NOTES B2 PG 116
 STAKE & STONE 2696.1 TO N 1/4 CORNER OF SECTION 8.

1973 LEE VOL 4 PG 597 DUG & FOUND REMAINS OF STAKE & 3 HH.
 DUG & FOUND 1" PIPE. {ALSO} DUG & FD REMAINS OF STAKE
 & 3 HH 4-2-73 BK 163/124 REFERENCED SAME.

1978 BARNES VOL 5 PG 497 SET ALUM. MONUMENT FROM TIES OF
 RECORD & REFERENCED SAME. 30 +/- NORTH OF CULVERT.

1988 BARNES E-9 FOUND ALUM. MONUMENT WITH TOP BROKE OFF.
 REPLACED WITH POLY. MONUMENT.

Paul Barnes
 3/24/2009

Paper weight-110# (minimum)

Black nonfading ink required

U.S. PUBLIC LAND SURVEY MONUMENT RECORD

For Public Land Survey Corners In:

WI ADMINISTRATIVE CODE A-E 7.08 REQUIREMENT

T. 4 N. R. 11 E. 4th P.M.

REV 10/23/2004

USMONREC.DWG

CORNER CODE INDEX

PORTER TWP

ROCK COUNTY WI

IF AVAILABLE

ROCK COUNTY COORDINATES PREFERRED

A	1	2	3	4	5	6	7	8	9	10	11	12	13	14	15	16	17	18	19	20	21	22	23	24	25	A	
B		6				5				4					3					2						1	B
C																											C
D																											D
E																											E
F																											F
G																											G
H																											H
J																											J
K																											K
L																											L
M																											M
N																											N
O																											O
P																											P
Q																											Q
R																											R
S																											S
T																											T
U																											U
V																											V
W																											W
X																											X
Y																											Y
Z																											Z

North _____ Elev. _____

East _____

Hor. Datum _____ Vert. Datum _____

LATITUDE _____ ELLIPS. HT. _____

LONGITUDE _____

NAD83(91) _____ NETWORK ADJ. YR _____

GPS (X) _____ TRAVERSE (X) _____

BASED ON THE FOLLOWING CONTROL:

1 2 3 4 5 6 7 8 9 10 11 12 13 14 15 16 17 18 19 20 21 22 23 24 25
PLACE MONUMENT SYMBOL AT PROPER LOCATION ON ABOVE INDEX

CORNER MONUMENT WITNESS MONUMENT

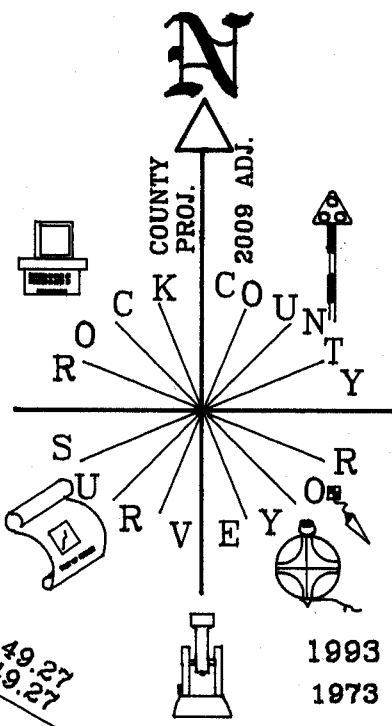
BEARINGS ARE BASED ON: _____

FIELD BOOK _____ PAGE # _____ SHEET 2 OF 3

SHOW A PLAN VIEW DRAWING DEPICTING THE CORNER MONUMENT AND SURROUNDING PHYSICAL FEATURES, INCLUDING THE EXCAVATION AREA AND DEPTH.

PLANNING & ZONING COMMITTEE ADOPTED THIS FORM ON 12/2/1982

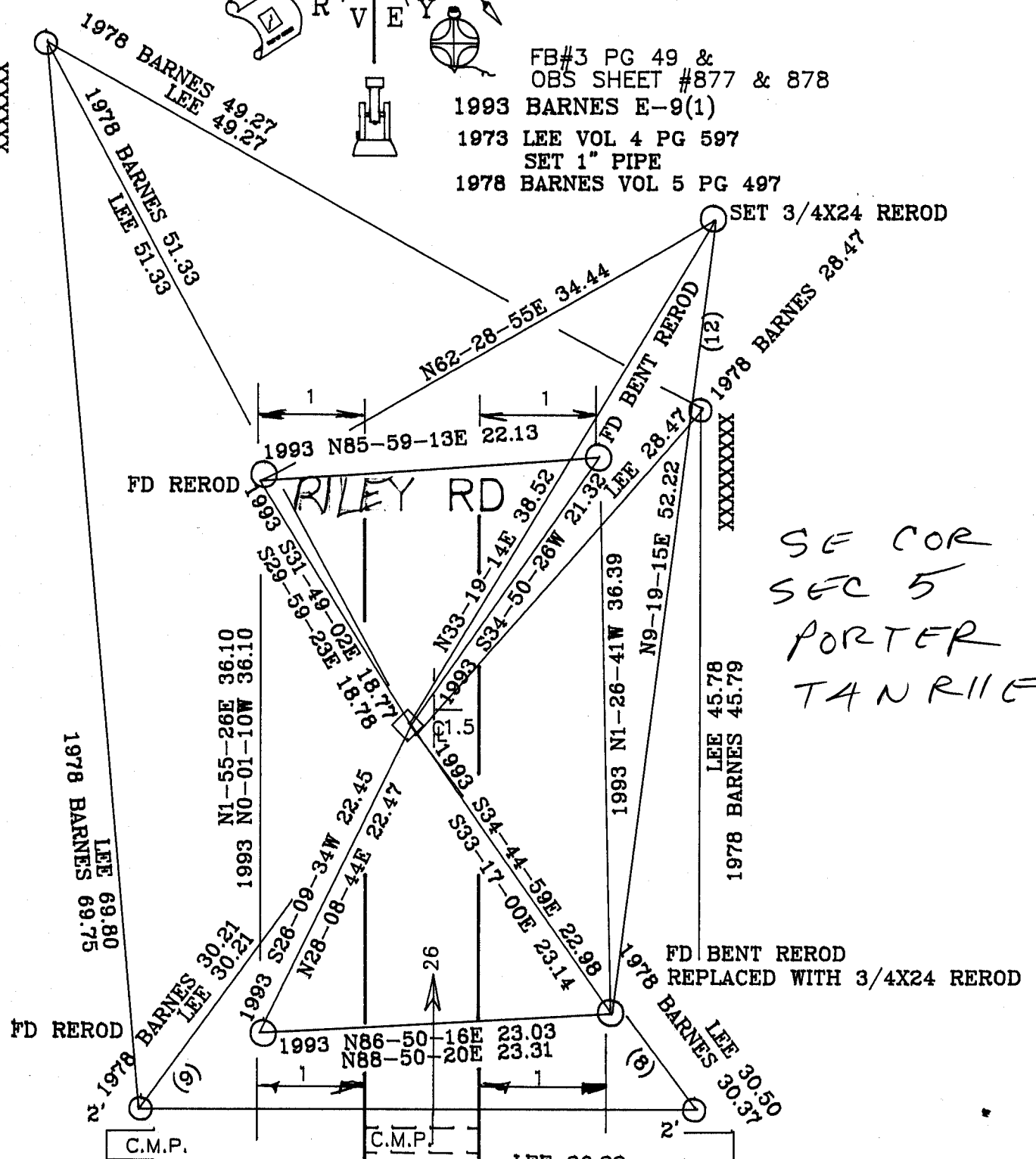
CORNER CODE E-9(2)



◇ FD POLY MON.
WITH TOP BROKE OFF

FB#3 PG 49 &
OBS SHEET #877 & 878
1993 BARNES E-9(1)
1973 LEE VOL 4 PG 597
SET 1" PIPE
1978 BARNES VOL 5 PG 497

XXXXXXXXXX
XXXXXXXXXX



SE COR
SEC 5
PORTER
TANRIE

LEE 36.32
1978 BARNES 36.63 SHEET 3 OF 3

EMBOSSSED SEAL
Ronald Barnes
3/14/09

E-9(2)