

Paper weight-110# (minimum)

Black nonfading ink required

U.S. PUBLIC LAND SURVEY MONUMENT RECORD

For Public Land Survey Corners In:

WI ADMINISTRATIVE CODE A-E 7.08 REQUIREMENT

T. 4 N. R. 11 E. 4th P.M.

REV 10/23/2004

USMONREC.DWG

CORNER CODE INDEX

PORTER TWP

ROCK COUNTY WI

IF AVAILABLE

ROCK COUNTY COORDINATES PREFERRED

A	1	2	3	4	5	6	7	8	9	10	11	12	13	14	15	16	17	18	19	20	21	22	23	24	25	A
B																										B
C																										C
D																										D
E																										E
F																										F
G																										G
H																										H
J																										J
K																										K
L																										L
M																										M
N																										N
O																										O
P																										P
Q																										Q
R																										R
S																										S
T																										T
U																										U
V																										V
W																										W
X																										X
Y																										Y
Z																										Z

North _____ Elev. _____

East _____

Hor. Datum _____ Vert. Datum _____

LATITUDE _____ ELLIPS. HT. _____

LONGITUDE _____

NAD83(91) _____ NETWORK ADJ. YR _____

GPS (X) _____ TRAVERSE (X) _____

BASED ON THE FOLLOWING CONTROL:

1 2 3 4 5 6 7 8 9 10 11 12 13 14 15 16 17 18 19 20 21 22 23 24 25
PLACE MONUMENT SYMBOL **◆** AT PROPER LOCATION ON ABOVE INDEX

◆ CORNER MONUMENT

○ WITNESS MONUMENT

(a)

BEARINGS ARE BASED ON:-----

FIELD BOOK _____ PAGE # _____

SHEET 1 OF 3

SHOW A PLAN VIEW DRAWING DEPICTING THE CORNER MONUMENT AND SURROUNDING PHYSICAL FEATURES, INCLUDING THE EXCAVATION AREA AND DEPTH.

PLANNING & ZONING COMMITTEE ADOPTED THIS FORM ON 12/2/1982

CORNER CODE J-13(2)

PO597

W1/4CORSEC27

(B) Describe any record evidence, monument evidence, occupational evidence, testimonial evidence or any other material evidence you considered, and whether the monument was found or placed.

- 1833 HARRISON (NOV 3RD) T4N R11E 4TH MER. NORTH
BET. 28 & 27
2640.0 QUARTER SEC COR. {RED OAK 10 N10W 33.0'
BURR OAK 12 S45E 52.14' {BURR OAK 12;
RED OAK 10} MARKED
4200.24 BURR OAK 18 IN DIAM.
5280.0 SET POST FOR COR TO SEC 21,22,27,28
{BURR OAK 12 N14E 29.70'; BUR OAK 12
S58W 73.26'; BURR OAK 18 N33W 96.36';
BURR OAK 20 S68E 91.74'
LAND ? SAME
- 1856 PORTER TWP RD REC BK 1 PG 8 BEGINNING AT THE 1/4
POST ON THE SEC LINE BETWEEN SECTIONS 27 & 28 T4N
R11E EAST; THENCE SOUTH ON THE SEC LINE 3960' TO THE
ROAD RUNNING EASTERLY AND WESTERLY ACROSS
SECTIONS 33 & 34 PAST THE DEWLLING OF JOHN TAYLOR
AND WE THE SUPERVISORS DO AWARD AS DAMAGES FROM
THE LAYING OUT AND OPENING OF THE ABOVE HIGHWAY TO
JOHN TRUMAN ON THE LINE 40 ROADS, 10 DALLARS, TO
JAMES JENKS ON THE LINE 80 RODS TWENTY DOLLARS,
JOHN STEVENS "*****" DECLARED TO BE A PUBLIC HIGHWAY
66' WIDE.
- 1857 PORTER TWP RD REC BK 1 PG 10 PORTER TWP RD REC BK 1
PG 8 BEGINNING AT THE 1/4 POST ON THE SEC LINE
BETWEEN SECTIONS 27 & 28 T4N R11E EAST; THENCE NORTH
ON THE SEC LINE AND ON THE SECTION LINE BETWEEN
SECTIONS 21 & 22, 6534' TO THE CENTER OF THE RD
RUNNING NORTH WESTERLY THROUGH SAID SECTIONS 21 &
22 AND THE WHOLE LENGTH OF SAID ROAD IS ONE MILE
AND 1254' AND THE ROD IS 66' WIDE THE LINE SURVEYED
BEING THE CENTER OF THE SAME. THE COURSES ARE
GIVEN ACCORDING TO THE TRUE MERIDIAN, VARIATION
NEEDLE 8-0. H. STEBBINS, E.D. BARNARD- SUPERVISORS
OF PORTER.
- 1871 RUGER VOL 2 PG 69 FOUND OLD STAKE AND BOTH BTS.
THE DISTANCE TO SE BT IS 49.5 INSTEAD OF 52.14. DROVE
STAKE DEEP AND ON IT WITH 3 HARD HEAD STONES. PUT ON
TOP OF IT RED HH.
- 1960 SCHIMEALL #3641 FD STAKE SURROUNDED BY 4 HH-SET BY
RUGER IN 1875-6' DEEP. SET PIPE IN PLACE OF STAKE
ALSO PIPE AT SURFACE AT BLACK TOP. FENCE TO THE EAST
IS 1' NORTH & 28.4 EAST.
- 1963 BATTERMAN VOL 4 PG 166 FOUND 1" PIPE BY SHIMEALL
AND REFERENCED SAME.
- 1971 COMBS CSM2-37 FD 1" PIPE
- 1972 LEE #3634 FD IRON PIPE.
- 1982 BARNES VOL 6 PG 279 CALLS FOR 5349.49 TO W 1/4
CORNER OF SECTION 28, 5267.03 TO E 1/4 CORNER OF
SECTION 27, 2654.11 TO SE CORNER OF SECTION 28,
1321.60 TO E 1/16TH CORNER OF NE 1/4 OF SECTION 28.
- 1982 BARNES T-13 REPLACED 1" PIPE WITH POLY MONUMENT.
- 1983 BARNES #6841 POLY MON. S89-54-15E 2625.48 TO SET 2"
PIPE @ CENTER OF SEC 27, S89-54-15E 5267.01 TO ALUM
MON @ E 1/4 COR SEC 27.
- 19?? BARNES ???? FOUND POLY MONUMENT. ACCEPTED FOUND
PERPETUATED LOCATION.
- 1992 BARNES VOL 6 PG 428 FD ALUM MON. N89-15-12W 5349.07
TO FD ALUM @ W 1/4 COR SEC 28, N00-56-36E 1321.59 TO
FD PIPE, N00-56-38E 2643.18 TO FD ALUM @ NE COR SEC
28
- 1992 SCHROEDER CSM VOL 16 PG 153
- 1992 SCHROEDER #11624 STATES NOTHING ABOUT MON. N01-
04E 1321.50 TO NW COR OF GOV'T LOT (3).

Donald Barnes
3-18-2009

SHEET 1 OF 3
CORNER CODE T-13(2)

PO597 W1/4CORSEC27

- 1993 KARNs CSM VOL 16 PG 477 FD ROCK COUNTY MON. 5349.32 TO ROCK COUNTY MON @ E 1/4 COR SEC 28.
- 2004 COMBS CSM VOL 27 PG 154 FD ALUM. 5338.48 TO W 1/4 COR SEC 28
- 2008 COMBS CSM32-96 FD ALUM 5338.48 TO PIPE @ W 1/4 COR SEC 28

^{Pol}
FD ALUM. MON & REFERENCE MONUMENTS.

C) Was the corner restored through acceptance of (1) an obliterated evidence location, or, (2) a found perpetuated location? ^{Pol}

ACCEPTED FD ALUM. MON. SINCE SHIMEALL REPLACED RUGER'S STAKE WITH A PIPE AND PLACED A PIPE ON TOP AT ROAD SURFACE, HIS DEEP PIPE SHOULD STILL BE IN PLACE.

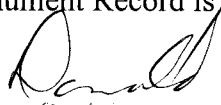
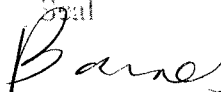
D) Describe any material discrepancy between the location of the corner as restored or reestablished and the location of that corner as previously restored or reestablished by distance and direction. Show the discrepancy on the plan view drawing under (a), above. Show the distances between the corner as previously restored or reestablished and (1) the corner as restored or reestablished, and (2) to at least 4 of the witness monuments shown on the drawing in (a), above.

NONE

(E) Was the corner reestablished through lost corner proportionate methods? If so, show the method, including the directions and distances to other public land survey corners used as evidence or used for proportioning the corner location.

NO

I, **Donald Barnes**, hereby certify that the corner location as identified by the corner code index was determined by me under my direction and control and that this U.S. Public Land Survey Monument Record is correct and complete to the best of my knowledge and belief.

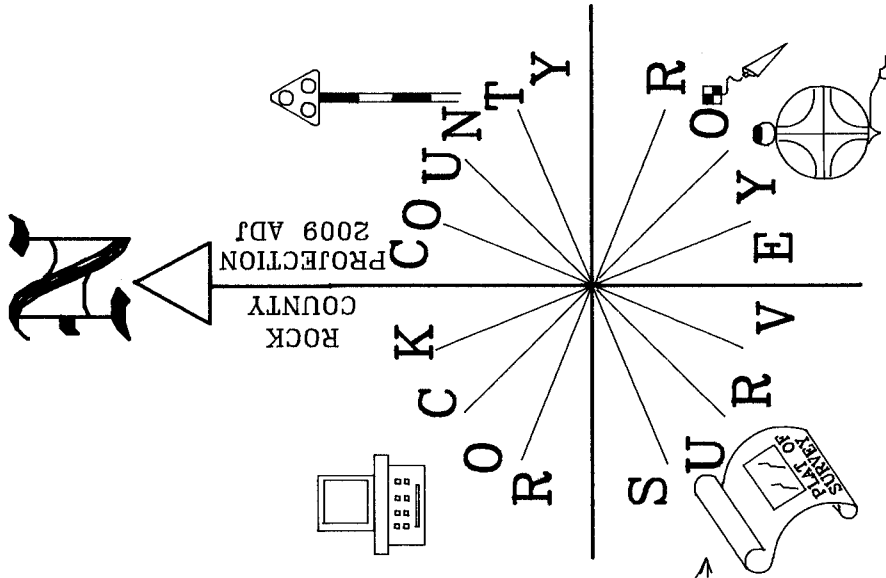

Seal


Emboss
3-18-2009

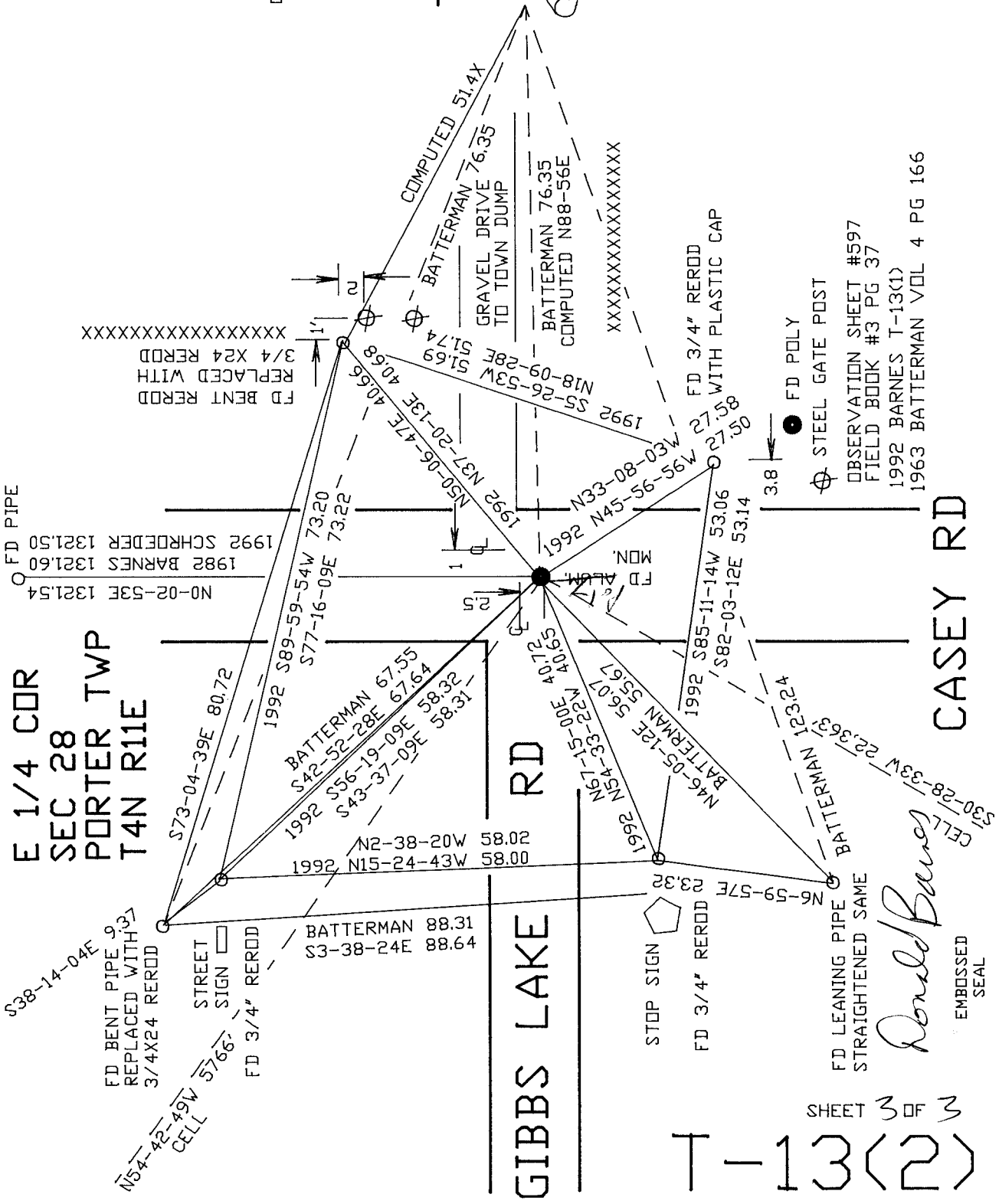
SHEET 2 OF 3

CORNER CODE T-13(2)

A.E. 7.08 REQUIREMENT



ZEISS
NOT TO SCALE



E 1/4 CDR
SEC 28
PORTER TWP
T4N R11E

CASEY RD

GIBBS LAKE RD

Donald Barnes

EMBOSSSED SEAL

3-18-2009

SHEET 3 OF 3

T-13(2)

FD BENT REROD
REPLACED WITH
3/4 X24 REROD
XXXXXXXXXXXXXXXXXXXX

FD PIPE
1982 BARNES 1321.60
1992 SCHREDER 1321.50
NO-02-53E 1321.54

BATTERMAN 88.31
S3-38-24E 88.64

N2-38-20W 58.02
1992 N15-24-43W 58.00

1992 S89-59-54W 73.20
S77-16-09E 73.22
BATTERMAN 67.55
S42-52-28E 67.64
S56-19-09E 58.32
S43-37-09E 58.31

COMPUTED 51.4X
BATTERMAN 76.35
GRAVEL DRIVE
TO TOWN DUMP
BATTERMAN 76.35
COMPUTED N88-56E
XXXXXXXXXXXXXXXXXXXX

FD 3/4" REROD
WITH PLASTIC CAP
M30-08-03W 27.53
M95-56-56E 27.53
1992 S5-26-53W 27.53
M18-09-28E 27.53

FD POLY
STEEL GATE POST
OBSERVATION SHEET #597
FIELD BOOK #3 PG 37
1992 BARNES T-13(1)
1963 BATTERMAN VOL 4 PG 166

STOP SIGN
FD 3/4" REROD
E3.32
N6-59-57E E3.32

FD LEANING PIPE
STRAIGHTENED SAME
BATTERMAN 123.24
S30-28-33W 22.363

FD MON.
FD LIGHT
1992 N45-56-56E 27.53
M33-08-03W 27.53
1992 N37-20-13E 40.68
M50-06-47E 40.68
S51-74-28E 40.68
S51-26-53W 40.68

CELL
S30-28-33W 22.363