

Paper weight-110# (minimum)

Black nonfading ink required

U.S. PUBLIC LAND SURVEY MONUMENT RECORD

For Public Land Survey Corners In:

WI ADMINISTRATIVE CODE A-E 7.08 REQUIREMENT

T. 4N. R. 11E. 4th P.M.

REV 10/23/2004

USMONREC.DWG

CORNER CODE INDEX

A	1	2	3	4	5	6	7	8	9	10	11	12	13	14	15	16	17	18	19	20	21	22	23	24	25	A	
B		6					5								3						2					1	B
C																											C
D																											D
E																											E
F																											F
G																											G
H																											H
J																											J
K																											K
L																											L
M																											M
N																											N
O																											O
P																											P
Q																											Q
R																											R
S																											S
T																											T
U																											U
V																											V
W																											W
X																											X
Y																											Y
Z																											Z

PORTER TWP
ROCK COUNTY WI

IF AVAILABLE
ROCK COUNTY COORDINATES PREFERRED

North _____ Elev. _____

East _____

Hor. Datum _____ Vert. Datum _____

LATITUDE _____ ELLIPS. HT. _____

LONGITUDE _____

NAD83(91) _____ NETWORK ADJ. YR _____

GPS (X) _____ TRAVERSE (X) _____

BASED ON THE FOLLOWING CONTROL:

1 2 3 4 5 6 7 8 9 10 11 12 13 14 15 16 17 18 19 20 21 22 23 24 25
PLACE MONUMENT SYMBOL AT PROPER LOCATION ON ABOVE INDEX

CORNER MONUMENT

WITNESS MONUMENT

BEARINGS ARE BASED ON: _____

FIELD BOOK _____ PAGE # _____

SHEET 1 OF 4

SHOW A PLAN VIEW DRAWING DEPICTING THE CORNER MONUMENT AND SURROUNDING PHYSICAL FEATURES, INCLUDING THE EXCAVATION AREA AND DEPTH.

PLANNING & ZONING COMMITTEE ADOPTED THIS FORM ON 12/2/1982

CORNER CODE R-25(1)

P0593 SE-COR-SEC24

(B) Describe any record evidence, monument evidence, occupational evidence, testimonial evidence or any other material evidence you considered, and whether the monument was found or placed.

1833 (SEP) MULLETT & BRINK NORTH ON EAST SIDE SECTION 25 T4N R11E 4TH MERIDIAN MT.

2640 SET QUARTER SECTION POST BUR OAK 6 N34W 82.5' WHITE OAK 12 N31E 126.72

2772 LEAVE PRAIRIE AND ENTER WOODLAND

5280 SET POST CORNER SECTIONS 24 & 25 BUR OAK 10 S35W 135.3' BUR OAK 10 N76E 168.3'

LAND ROLLING SECOND RATE LAST HALF THINLY TIMBERED WITH WHITE BLACK & BUR OAK ELM AND WHITE MAPLE THE REST PRAIRIE

1833 (SEP 26) MULLETT & BRINK NORTH ON EAST SIDE OF SECTION 24 T4N R11E

2640 SET QUARTER SECTION POST BUR OAK 18 S61W 60.72' BUR OAK 20 N26W 110.22'

3762 TRAIL @ NW

3810.84 BUR OAK 14 IN DIAMETER

5280 SET POST CORNER SECTIONS 13 & 24 BUR OAK 12 N83W 54.12' BLACK OAK 10 S12W 51.48'

LAND ROLLING SECOND RATE FIRST HALF ON WEST SIDE OF LINE PRAIRIE EAST SIDE TIMBERED WITH WHITE BLACK AND BUR OAK ELM AND WHITE MAPLE LAST 1/2 TIMBERED WITH WHITE AND BLACK & BUR OAK.

1833 (OCT 29) HARRISON EAST ON RANDOM BET SECS 24 & 25 T4N R11E 4TH MER

2640 QUARTER SEC COR (TEMPORARY)

5329.5 INT E BDY IN E EDGE OF PRAIRIE 34.32' S OF POST LAND ROLLING 1ST RATE PRAIRIE COVERED WITH GRASS & WEEDS

COR. WEST BET SECS 24 & 25

2664.75 QUARTER SEC COR. {SET A POST & RAISED A MOUND OF EARTH & SODS.

5329.5 INT. SEC COR.

1834 (APR 4TH) HARRISON EAST BETWEEN SECS 19 & 30 T4N R12E 4TH M

363 ENTER BOTTOM

396 TRAIL NE

799.92 INT RIGHT BANK OF ROCK RIVER SET MEANDER POST {BURR O 12 S31W 174.24' BURR O 8 N87W 172.92' BURR O 12 BURR O 8} MARKED

LAND ROLLING 2ND RATE TIMBER BURR O UNDERGROWTH ? & GRASS & WEEDS

1836 (AUG 2) BURNHAM WEST RANDOM BETW SECS 19 & 30

3597? INT. LEFT BANK ROCK RIVER

4280.1? INT. RIGHT BANK 22.44' SOUTH OF MP FIRST RATE BUR OAK OPENINGS

EAST CORRECTED BETW. SECS 30 & 19

709.5 SET MP ON LEFT BANK BUR OAK 10 N41E 10.56' BUR OAK 8 S44 1/2W 25.74'

1640.1 SET 1/4 SEC POST YELLOW OAK 16 NORTH 41W 7.26' W. OAK 18 S26E 62.7'

4280.1 TO CORNERS

1848 STEBBINS PORTER TWP BK 1 PG 3 BEGINNING IN THE EAST LINE OF THE TOWN AT THE SE COR OF SEC 24 T4R11; THENCE WEST ON THE SOUTH LINE OF SAID SECTION & SECTIONS 23 & 22 TO A POINT 528' WEST OF THE SE COR OF SEC 22 "" THE WHOLE LENGTH OF THE RD IS 6 MILES AND 2706' COURSE GIVEN ACCORDING TO THE TRUE MERIDIAN VARIATION OF NEEDLE 7-45

Donald Paeris

Nov 4 2009

SHEET 1 OF 34
CORNER CODE ~~R-1(1)~~
R-25(1)

PO593 SE-COR-SEC24

- 1854 TWP RD REC PORTER TWP BK 1 PG 6 BEGINNING AT THE ¼ POST ON THE WEST LINE OF SEC 19 T4N R12E (STH 184); THENCE RUNNING SOUTH ON THE SECTION LINE 1337.82'; THENCE EAST 446.82'; THENCE S18 ½E 396'; THENCE S3W 264' TO RED OAK TREE; THENCE S17 ¾W 264' TO BURR OAK; THENCE S1E 764.94'; THENCE S11W 502.92' TO BURR OAK TREE; THENCE S6 ¾W 326.04'; THENCE S17E 1158.3'; THENCE S30 ¾W 741.84'; THENCE S41 ¾W 1247.4' TO THE WEST LINE OF T4N R12E (THENCE SOUTH ON THE TOWN LINE 766.92', THENCE S42 ½W 924'; [SEC 30 FULTON] THENCE S3 ¼W ? CHAINS; THENCE S32 ½E 1013.1' TO THE W. LINE OF T4N R12E; THENCE S. ON THE TOWN LINE 4746.06' TO THE SW COR OF SEC 31 OF T4N R12E)
- 1875 RUGER VOL 2 PG 200 FD STUMPS OF NE BT & WHERE STUMP OF SW BT HAD BEEN DUG UP. DROVE STAKE SURROUNDED IT BY 4 STONES. VAR 6-05 2646.6 TO W ¼ COR SEC 19, VAR 6-52 804.54 TO M.P.
- 1880 LEE VOL 2 PG 315 FD COR SET BY RUGER VAR 7-30 804.54' (R) TO MP, VAR 5-48 2655.18 TO W ¼ COR SEC 19
- 1961 BATTERMAN VOL 4 PG 94 DUG HOLE 20X20X3 FD NOTHING. AT N/S FENCE & IN RD
- 1977 BARNES VOL 5 PG 263 LOCATED COR IN PATCH SPOT WHERE FORMER COUNTY SURVEYOR DUG & FOUND NOTHING. SET ALUM. MON. & REF. SAME. 29' WEST OF CULVERT. SET NE COR ON LINE WITH E ¼ COR SEC 25 & E ¼ COR SEC 24 AT CENTER OF RD. THIS AGREED WITH THE FOLLOWING: 1) ROAD RECORDS STATES GIBBS LAKE RD WAS STAKE OUT BEGINNING WITH THE NE COR SEC 25 ON JAN 22, 1848. 2) OCCUPATION TO THE NORTH, 3) OCCUPATION TO THE WEST. DOES NOT AGREE WITH THE ORIGINAL GOV. SURV REC OR THE SINGLE PROPORTIONATE DISTANCE FROM THE E ¼ COR SEC 25 & E ¼ COR SEC 24.
- 1977 BARNES VOL 5 PG 265 SET ALUM. MON.
- 1977 BARNES VOL 5 PG 267 2611.9X TO W ¼ COR SEC 30 & 2694.46 TO N ¼ COR SEC 25 PORTER TWP
- 1983 BARNES R-3 SHOWS REC DISTANCE ALONG SOUTH LINE OF SEC 19.
- 1982 BARNES VOL 6 PG 272 TIED INTO TRAVERSE POINTS ESTABLISHED BY AERO-METRIC FOR AIR PHOTO PROJECT. FD ALUM. 288,611.61; 2,233,267.10
- 1983 BARNES R-1 DUG HOLE 4X6X1.5 DEEP. I SET THE CORNER ON LINE WITH THE W ¼ COR OF SEC 30 AND THE W ¼ COR OF SEC 19 AT SINGLE PROPORTIONATE MEASUREMENT. THE E/W FENCE LINE NEAR THE E/W CENTER OF THE SW ¼ OF SEC 19 IS CRUCIAL FOR ANALYZING THE SECTION. IT APPEARS FROM THE LOCATION OF THE OLD RECORDS AND THE OCCUPATION LINES THERE MAY HAVE BEEN TWO CORNERS. ONE THAT RUGER SET FROM TH BT STUMPS AND ONE THAT WAS SET BY WHOEVER DID GIBBS LAKE RD. DECLARING THE CORNER LOST AND SETTING IT SO IS IN HARMONY WITH RUGER'S DISTANCES AND THE OCCUPATION ON THE EAST SIDE OF STH 184. 288,649.96; 2,233,266.80 E/W. 38.36' NORTH OF FD ALUM IN RD. FD ALUM MON IS 288,611.61; 2,233,267.10. 2650.37 TO W ¼ COR SEC 19, 2650.37 TO W ¼ COR SEC 30, ON LINE WITH W ¼ COR SEC 19 & W ¼ COR SEC 30.
- 1983 BARNES VOL 6 PG 301 COORDINATES 288,649.96; 2,233,266.80

SHEET 2 OF 34

CORNER CODE R-25(1)

Renald Barnes

Nov 4 2009

2000 LATHROP GSN VOL 23 PG 440 ALUM. 37.59 NORTH OF NE COR SEC 25 PORTER TWP., ANGLE @ NW COR SEC 30 FROM N 1/4 COR SEC 30 TO W 1/4 COR SEC 30 IS 89-36-55, 2687.02 TO W 1/4 COR SEC 30, 2694.44 FROM NE COR SEC 25 TO N 1/4 COR SEC 25
2007 BARNES R-1(1) FD POLY MON WITH CARSONITE & REFERENCE MONUMENTS. PLACED MORE REFERENCE MONUMENTS.

USED 2007 DATA.

C) Was the corner restored through acceptance of (1) an obliterated evidence location, or, (2) a found perpetuated location?

ACCEPTED FD POLY. IS IN HARMONY WITH RUGER'S LS TO THE EAST.

D) Describe any material discrepancy between the location of the corner as restored or reestablished and the location of that corner as previously restored or reestablished by distance and direction. Show the discrepancy on the plan view drawing under (a), above. Show the distances between the corner as previously restored or reestablished and (1) the corner as restored or reestablished, and (2) to at least 4 of the witness monuments shown on the drawing in (a), above.

SEE 2007 R-1(1) TIE SHEET

(E) Was the corner reestablished through lost corner proportionate methods? If so, show the method, including the directions and distances to other public land survey corners used as evidence or used for proportioning the corner location.

I, Donald Barnes, hereby certify that the corner location as identified by the corner code index was determined by me under my direction and control and that this U.S. Public Land Survey Monument Record is correct and complete to the best of my knowledge and belief.

Donald Barnes
Donald Barnes

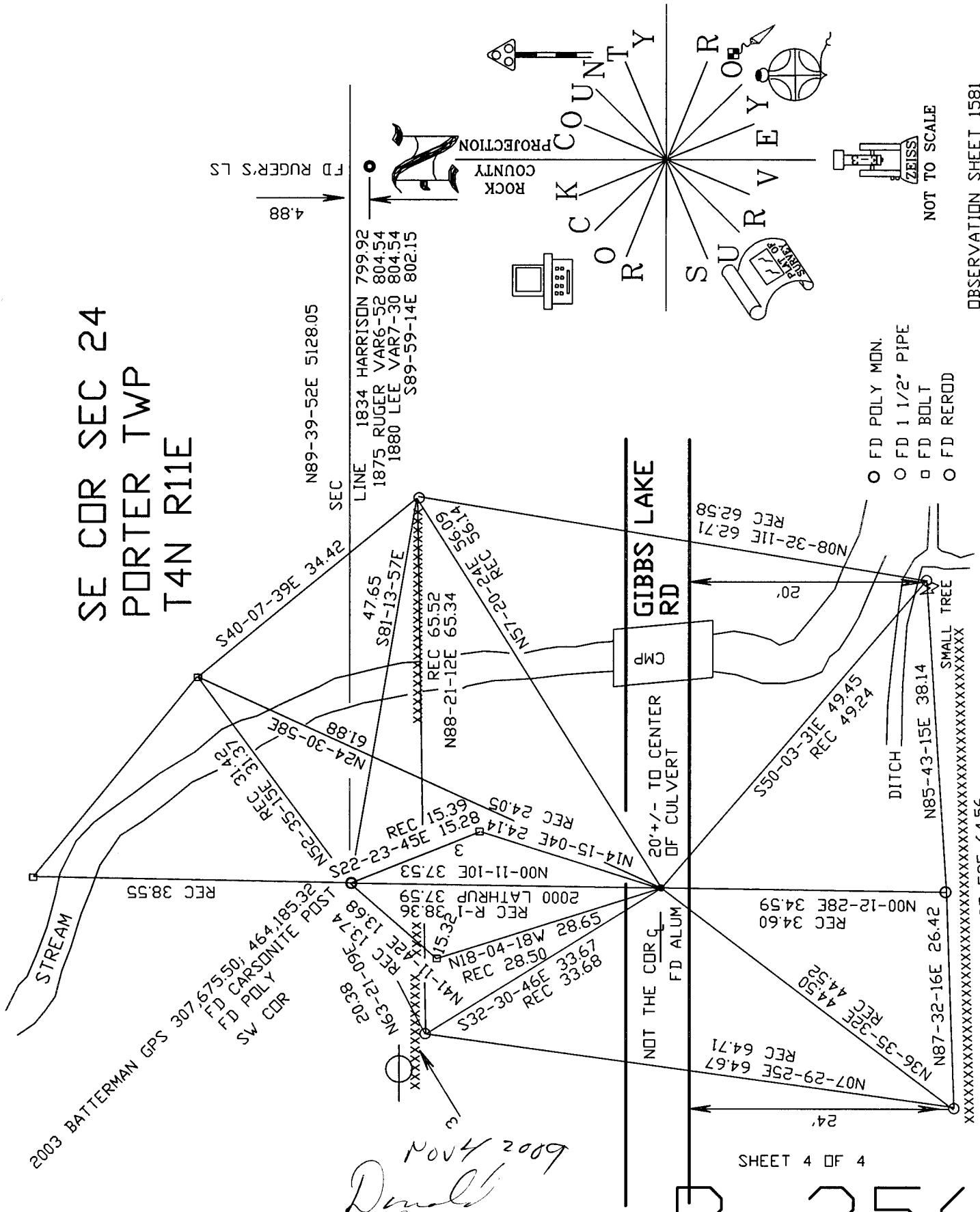
Nov 4 2009

SHEET 3 OF 3 4

CORNER CODE
A.E. 7.08 REQUIREMENT

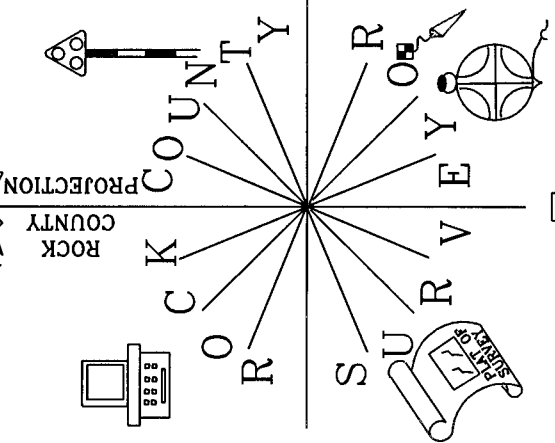
R-25(1)

SE COR SEC 24
 PORTER TWP
 T4N R11E



FD RUGER'S LS
 4.88

LINE 1834 HARRISON 799.92
 1875 RUGER VAR6-52 804.54
 1880 LEE VAR7-30 804.54
 S89-59-14E 802.15



- FD POLY MON.
- FD 1 1/2' PIPE
- FD BOLT
- FD REROD

OBSERVATION SHEET 1581

2003 BATTERMAN GPS 307.67550; 464.18532
 FD CARSONITE POST
 FD POLY MON
 SW COR

Nov 4 2009
Donald Bains
 EMBOSSED SEAL

SHEET 4 OF 4

R-25(1)