

Paper weight-110# (minimum)

Black nonfading ink required

U.S. PUBLIC LAND SURVEY MONUMENT RECORD

For Public Land Survey Corners In:

WI ADMINISTRATIVE CODE A-E 7.08 REQUIREMENT

T. 4 N. R. 1 E. 4th P.M.

REV 10/23/2004

USMONREC.DWG

CORNER CODE INDEX

PORTER TWP
ROCK COUNTY WI

IF AVAILABLE
ROCK COUNTY COORDINATES PREFERRED

| | | | | | | | | | | | | | | | | | | | | | | | | | | | |
|---|---|---|---|---|---|---|---|---|---|----|----|----|----|----|----|----|----|----|----|----|----|----|----|----|----|--|---|
| | 1 | 2 | 3 | 4 | 5 | 6 | 7 | 8 | 9 | 10 | 11 | 12 | 13 | 14 | 15 | 16 | 17 | 18 | 19 | 20 | 21 | 22 | 23 | 24 | 25 | | |
| A | | | | | | | | | | | | | | | | | | | | | | | | | | | A |
| B | | | | | | | | | | | | | | | | | | | | | | | | | | | B |
| C | | | | | | | | | | | | | | | | | | | | | | | | | | | C |
| D | | | | | | | | | | | | | | | | | | | | | | | | | | | D |
| E | | | | | | | | | | | | | | | | | | | | | | | | | | | E |
| F | | | | | | | | | | | | | | | | | | | | | | | | | | | F |
| G | | | | | | | | | | | | | | | | | | | | | | | | | | | G |
| H | | | | | | | | | | | | | | | | | | | | | | | | | | | H |
| J | | | | | | | | | | | | | | | | | | | | | | | | | | | J |
| K | | | | | | | | | | | | | | | | | | | | | | | | | | | K |
| L | | | | | | | | | | | | | | | | | | | | | | | | | | | L |
| M | | | | | | | | | | | | | | | | | | | | | | | | | | | M |
| N | | | | | | | | | | | | | | | | | | | | | | | | | | | N |
| O | | | | | | | | | | | | | | | | | | | | | | | | | | | O |
| P | | | | | | | | | | | | | | | | | | | | | | | | | | | P |
| Q | | | | | | | | | | | | | | | | | | | | | | | | | | | Q |
| R | | | | | | | | | | | | | | | | | | | | | | | | | | | R |
| S | | | | | | | | | | | | | | | | | | | | | | | | | | | S |
| T | | | | | | | | | | | | | | | | | | | | | | | | | | | T |
| U | | | | | | | | | | | | | | | | | | | | | | | | | | | U |
| V | | | | | | | | | | | | | | | | | | | | | | | | | | | V |
| W | | | | | | | | | | | | | | | | | | | | | | | | | | | W |
| X | | | | | | | | | | | | | | | | | | | | | | | | | | | X |
| Y | | | | | | | | | | | | | | | | | | | | | | | | | | | Y |
| Z | | | | | | | | | | | | | | | | | | | | | | | | | | | Z |
| | 1 | 2 | 3 | 4 | 5 | 6 | 7 | 8 | 9 | 10 | 11 | 12 | 13 | 14 | 15 | 16 | 17 | 18 | 19 | 20 | 21 | 22 | 23 | 24 | 25 | | |

North _____ Elev. _____

East _____

Hor. Datum _____ Vert. Datum _____

LATITUDE _____ ELLIPS. HT. _____

LONGITUDE _____

NAD83(91) _____ NETWORK ADJ. YR _____

GPS (X) _____ TRAVERSE (X) _____

BASED ON THE FOLLOWING CONTROL:

PLACE MONUMENT SYMBOL AT PROPER LOCATION ON ABOVE INDEX

CORNER MONUMENT

WITNESS MONUMENT

BEARINGS ARE BASED ON: -----

FIELD BOOK _____ PAGE # _____

SHEET 1 OF 3

SHOW A PLAN VIEW DRAWING DEPICTING THE CORNER MONUMENT AND SURROUNDING PHYSICAL FEATURES, INCLUDING THE EXCAVATION AREA AND DEPTH.

PLANNING & ZONING COMMITTEE ADOPTED THIS FORM ON 12/2/1982

CORNER CODE R13(z)

P0587

SWCORSEC22

(B) Describe any record evidence, monument evidence, occupational evidence, testimonial evidence or any other material evidence you considered, and whether the monument was found or placed.

1833 HARRISON (NOV) T4N R11E 4TH MER. NORTH
 BET. 21 & 22
 2640.00 SET QUARTER SEC COR. BURR OAK 10
 S63E 52.14'; BURR OAK 8 N40W 16.50'
 BURR OAK 10; BURR OAK 8} MARKED
 4521.0 LEAVE TIMBER & ENTER PRAIRIE
 5190.9 ROAD E & W
 5280.0 SET COR TO SECS 15,16,21,,22
 SET A POST & RAISED MOUND OF EARTH
 & SOD
 LAND 1ST 3/4 ROLLING 2ND RATE WITH BURR
 & WHITE OAK TIMBER LAST 1/4 ROLLING
 PRAIRIE

1833 HARRISON (NOV) T4N R11E 4TH MER. EAST
 BET. SEC 22 & 27
 2640.0 QUARTER SEC COR. (TEMPORARY)
 2772.0 BROOK 5.28' CRS NORTH
 5247.0 INT. EAST BNDY 23.76' SOUTH OF POST
 LAND ROLLING 2ND RATE WITH WHITE OAK
 & BURR OAK TIMBER
 WEST COR WEST
 2623.50 QUARTER SEC COR
 WHITE OAK 18 N55E 91.74'; WHITE
 OAK N25W 36.30' WHITE OAK 18; WHITE
 OAK 24} MARKED
 5247.0 SEC COR
 N.?. FRAC 1/4 SEC COR RAN LINE SOUTH 6-
 1/2 EAST 957.00' TO SMALL LAKE IN SEC
 27

1833 HARRISON (NOV 3RD) T4N R11E 4TH MER. NORTH
 BET. 28 & 27
 2640.0 QUARTER SEC COR. {RED OAK 10 N10W 33.0'
 BURR OAK 12 S45E 52.14' {BURR OAK 12;
 RED OAK 10} MARKED
 4200.24 BURR OAK 18 IN DIAM.
 5280.0 SET POST FOR COR TO SEC 21,22,27,28
 {BURR OAK 12 N14E 29.70'; BURR OAK 12
 S58W 73.26'; BURR OAK 18 N33W 96.36';
 BURR OAK 20 S68E 91.74'
 LAND ? SAME

1833 HARRISON (NOV) T4N R11E 4TH MER. EAST ON RAND.
 BET. 21 & 28
 2640.0 TEMPY 1/4 SEC COR.
 5314.98 INT. E BDY 16.50' NORTH OF POST
 LAND ? SAME
 WEST COR. WEST BET 21 & 28
 1353.0 BURR OAK 12
 2657.49 QUARTER SEC. COR. {BURR OAK 12 N45W
 38.94'; RED OAK 20 S3W 37.62' {BURR
 OAK 12; RED OAK 20} MARKED
 4146.78 HICKORY 12
 5314.98 SEC COR

1963 BATTERMAN VOL 4 PG 166 DUG LARGE HOLE & FOUND NOTHING.

1973 LEE #3635 FD IRON PIN S89-26-24E 247.50 TO SET PIPE ON NORTH LINE OF SEC 27, SOUTH 307.89 TO IRON PIN ON WEST LINE OF SEC 27

1979 SCHNEEBERGER #3617 FD RR SPIKE S89-52-03E 280.50 ALONG SOUTH LINE OF SEC 22 TO SET STAKE, N00-20-22E 1331.06 TO SET R/R

1979 SCHNEEBERGER #3618 FD RR SPIKE S89-52-03E ALONG SEC 22, N00-20-22E 176.06 TO SET R/R

SHEET 1 OF 3
CORNER CODE R-13(2)

Donald Barnes

6-12-09

- PO587 SWCORSEC22
- 1979 SCHNEEBERGER CSM VOL 9 PG 307 FD RR S89-52-03E 280.50 TO A POINT ON SEC LINE; N00-20-22E 176.06 TO A POINT ON THE SEC LINE.
- 1982 BARNES VOL 6 PG 279 DUG & FD 2X36 IP SURROUNDED BY 4 HH & SMALL PIECES OF WOOD STAKE 8' BELOW THE RD SURFACE. REPLACED THE 2" PIPE WITH A 1X24 IP & SET THE 2" PIPE HORIZONTALLY ON TOP (8' DEEP). REFERENCED SAME. SHORT PK TIES; 18.00 TO THE NW & 18.00 TO THE NE. @ CENTER OF PVMT & ON LINE WITH E/W FENCE.
- 1982 BARNES R-13 FD R/R SPIKE & REPLACED WITH POLY MON. & REFERENCED SAME. 5' EAST OF CENTER OF PVMT & ON LINE WITH E/W FENCE.
- 1984 BRANDT #14082 FD ALUM. MON.
- 1992 BARNES R-13(1) FD POLY MON 5' EAST OF CENTER OF PVMT. & REFERENCED SAME.
- 1992 BARNES VOL 6 PG 428 FD ALUM. MON. N89-04-59W 2685.04 TO N 1/4 COR SEC 28, S0-56-39E 1321.60 TO FD PIPE, S0-56-38W 2643.18 TO FD ALUM MON @ E 1/4 COR SEC 28
- 1993 SCHROEDER #9965 STATES NOTHING ABOUT MON. N89-25-02W 1333.49 TO IRON PIN, S00-43-44W 2651.14 TO PK @ CENTER OF SEC 28
- 2000 COMBS #7655 ALUM MON N89-34-37W 2635.92 TO ALUM @ S 1/4 COR SEC 22
- 2000 KARNS #7606 ROCK COUNTY SEC COR N89-33-41W 2685.22 TO ROCK COUNTY SEC COR @ S 1/4 COR SEC 21, N00-15-46W 2662.14 TO ROCK COUNTY SEC COR @ E 1/4 COR SEC 21.
- 2002 KARNS CSM VOL 25 PG 225 STATES NOTHING ABOUT MON. 2661.08 TO E 1/4 COR SEC 21

^{Poly}
FD ALUM. MON. 4' EAST OF CEN OF PVMT. & REF. MONUMENTS.

C) Was the corner restored through acceptance of (1) an obliterated evidence location, or, (2) a found perpetuated location?

ACCEPTED ALUM. MON. SINCE BATTERMAN IN 1963 DUG A LARGE HOLE & FOUND NOTHING, THE FD IRON PIN MENTIONED BY LEE IN 1973 MUST HAVE BEEN PLACED BETWEEN 1963 AND 1973. I DID NOT FIND A RECORD OF IT BEING SET OR HOW IT WAS ESTABLISHED.

D) Describe any material discrepancy between the location of the corner as restored or reestablished and the location of that corner as previously restored or reestablished by distance and direction. Show the discrepancy on the plan view drawing under (a), above. Show the distances between the corner as previously restored or reestablished and (1) the corner as restored or reestablished, and (2) to at least 4 of the witness monuments shown on the drawing in (a), above.

NONE

(E) Was the corner reestablished through lost corner proportionate methods? If so, show the method, including the directions and distances to other public land survey corners used as evidence or used for proportioning the corner location.

I, **Donald Barnes**, hereby certify that the corner location as identified by the corner code index was determined by me under my direction and control and that this U.S. Public Land Survey Monument Record is correct and complete to the best of my knowledge and belief.

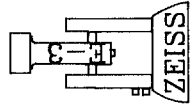
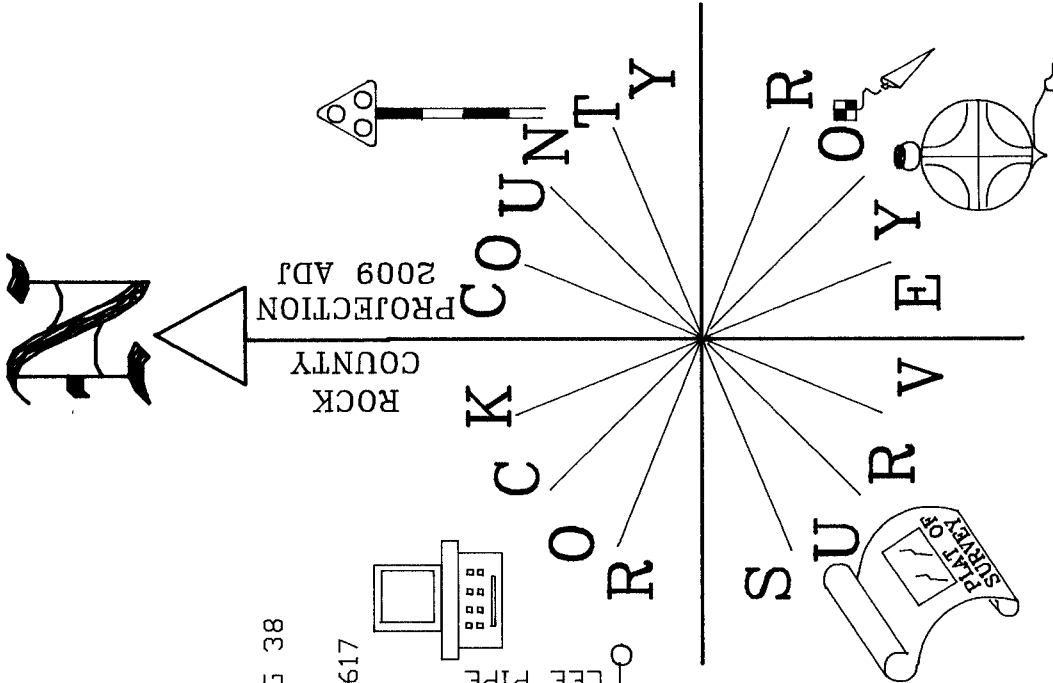
Seal

Donald Barnes
6-12-09

SHEET 2 OF 3

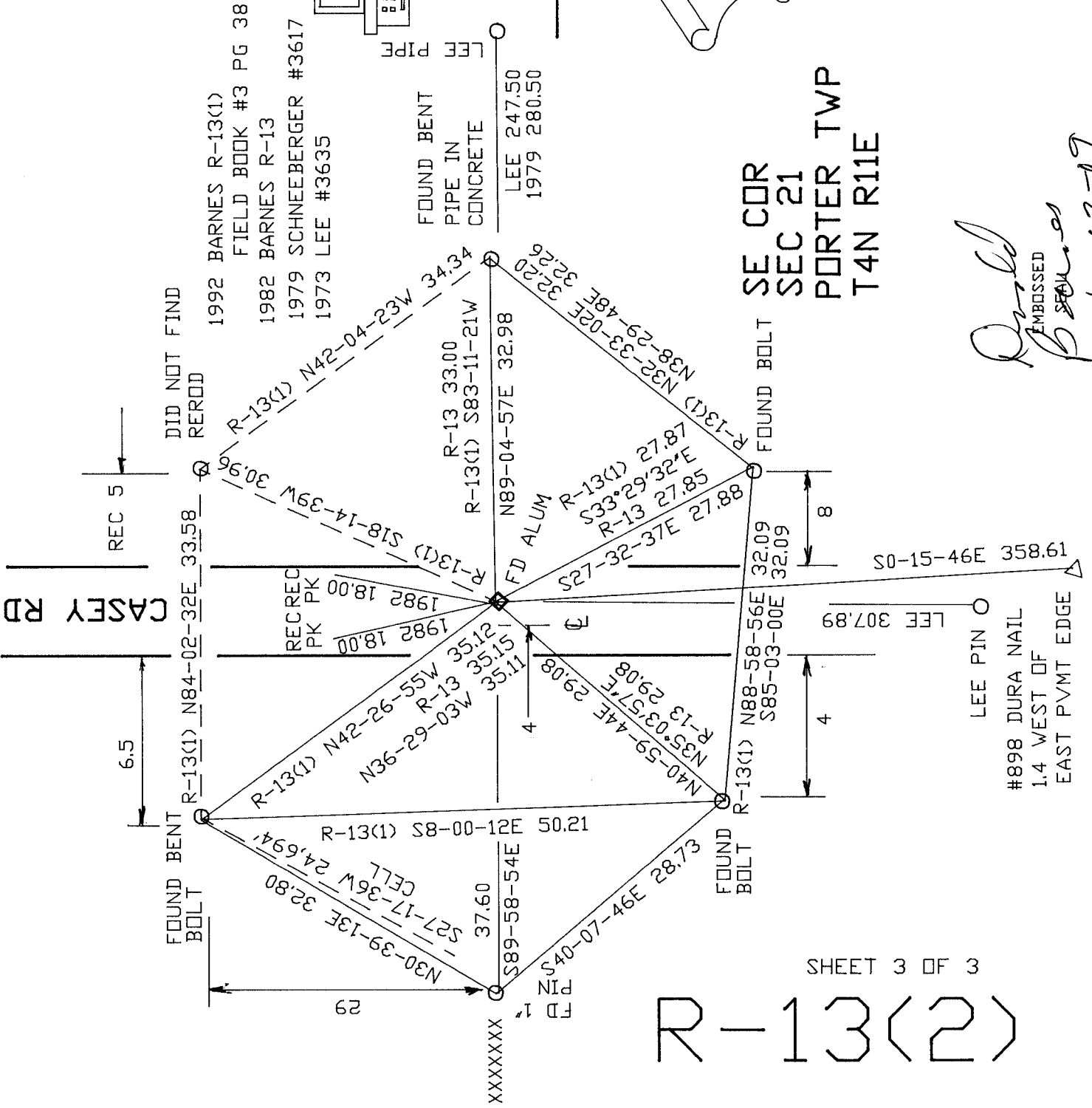
CORNER CODE R-13(2)

A.E. 7.08 REQUIREMENT



NOT TO SCALE

OBSERVATION SHEET #960



SE CDR
SEC 21
PORTER TWP
T4N R11E

Ronald
B. Scales
EMBOSSED
6-12-09

SHEET 3 OF 3

R-13(2)