

Paper weight-110# (minimum)

Black nonfading ink required

U.S. PUBLIC LAND SURVEY MONUMENT RECORD

For Public Land Survey Corners In:

WI ADMINISTRATIVE CODE A-E 7.08 REQUIREMENT

T. 4 N. R. 11 E. 4th P.M.

REV 10/23/2004

USMONREC.DWG

CORNER CODE INDEX

PORTER TWP

ROCK COUNTY WI

IF AVAILABLE

ROCK COUNTY COORDINATES PREFERRED

A	1	2	3	4	5	6	7	8	9	10	11	12	13	14	15	16	17	18	19	20	21	22	23	24	25	A
B																										B
C																										C
D																										D
E																										E
F																										F
G																										G
H																										H
J																										J
K																										K
L																										L
M																										M
N																										N
O																										O
P																										P
Q																										Q
R																										R
S																										S
T																										T
U																										U
V																										V
W																										W
X																										X
Y																										Y
Z																										Z

North _____ Elev. _____

East _____

Hor. Datum _____ Vert. Datum _____

LATITUDE _____ ELLIPS. HT. _____

LONGITUDE _____

NAD83(91) _____ NETWORK ADJ. YR _____

GPS (X) _____ TRAVERSE (X) _____

BASED ON THE FOLLOWING CONTROL:

1 2 3 4 5 6 7 8 9 10 11 12 13 14 15 16 17 18 19 20 21 22 23 24 25
PLACE MONUMENT SYMBOL AT PROPER LOCATION ON ABOVE INDEX

CORNER MONUMENT

WITNESS MONUMENT

(a)

BEARINGS ARE BASED ON: _____

FIELD BOOK _____ PAGE # _____

SHEET 1 OF 3

SHOW A PLAN VIEW DRAWING DEPICTING THE CORNER MONUMENT AND SURROUNDING PHYSICAL FEATURES, INCLUDING THE EXCAVATION AREA AND DEPTH.

PLANNING & ZONING COMMITTEE ADOPTED THIS FORM ON 12/2/1982

CORNER CODE J-13(2)

PO547 SECORSEC9

CENTER OF HIGHWAYS 66' WIDE AND WE THE SAID SUPERVISORS DO HEREBY DISCONTINUE THE PUBLIC HIGHWAY DISCRIBED AS FOLLOWS: BEGINNING AT THE SE COR OF THE W 1/4 OF SEC 22 AND RUNNING NORTH ON THE LINE OF EIGHTIES THROUGH SAID QUARTER SECTION AND THROUGH SEC 15 AND A PORTION OF SEC 10, UNTIL IT INTERSECTS THE ROAD RUNNING WEST FROM VAN TATTENS BRIDGE THROUGH SEC 10,

- 1880 ?? VOL 6 PG 331 THE FOLLOWING ROAD RECORD INFORMATION IS FROM A BOOK THAT IS IN THE COUNTY CLERK'S VAULT. THE RECORDS ARE FROM 1840-1888. SOME OR ALL OF THE ROADS MAY NOT BE USED. THE BEARINGS AND DISTANCES OF THE CENTER LINE ARE RECORDED AS SURVEYED. NW COR SEC 15 IS 330' NORTH OF CENTER OF RD.
- 1965 BATTERMAN VOL 4 PG 236 FD STAKE SURROUNDED BY 4 HH AT THE NW COR OF SEC 15 SET 1' PIPE IN STAKE HOLE ALSO SET R/R SPIKES 10' W & 10' S. REFERENCED SAME. 2645.30 TO N 1/4 COR SEC 15
- 1970 COMBS CSM VOL 1 PG 289 FD PIPE, ANGLE 89-53-05 @ SW COR SEC 9 FROM W 1/4 COR SEC 9 TO PIPE @ SE COR SEC 9
- 1982 BARNES J-13 FD 1" PIPE 28" DEEP. DROVE PIPE DEEP & SET ALUM ON TOP. REFERENCED SAME.
- 1993 BARNES J-13(1) FD ALUM. MON. REFERENCED SAME.
- 2002 MARTY #14329, 14357, 14358 FD ALUM. MON. NOO-03-13W 2677.02 TO COMPUTED POSITION @ W 1/4 COR SEC 10, N89-40-49E 2644.58 TO FD 2" IP @ S 1/4 COR SEC 10.

FD ALUM. MON 0.2 BELOW PVMT SURFACE.

C) Was the corner restored through acceptance of (1) an obliterated evidence location, or, (2) a found perpetuated location?

ACCEPTED FD ALUM. MON. IT IS IN HARMONY WITH THE REFERENCE MONUMENTS.

D) Describe any material discrepancy between the location of the corner as restored or reestablished and the location of that corner as previously restored or reestablished by distance and direction. Show the discrepancy on the plan view drawing under (a), above. Show the distances between the corner as previously restored or reestablished and (1) the corner as restored or reestablished, and (2) to at least 4 of the witness monuments shown on the drawing in (a), above.

NONE

(E) Was the corner reestablished through lost corner proportionate methods? If so, show the method, including the directions and distances to other public land survey corners used as evidence or used for proportioning the corner location.

NO

I, **Donald Barnes**, hereby certify that the corner location as identified by the corner code index was determined by me under my direction and control and that this U.S. Public Land Survey Monument Record is correct and complete to the best of my knowledge and belief.

Seal
Donald

Emboss
Barnes

3/17/2009

SHEET 2 OF 3

CORNER CODE

J-13(2)

A.E. 7.08 REQUIREMENT

PO547

SECORSEC9

(B) Describe any record evidence, monument evidence, occupational evidence, testimonial evidence or any other material evidence you considered, and whether the monument was found or placed.

1833 HARRISON (NOV2) T4N R11E 4TH MER. NORTH

BET. 15 & 16

2640.0 QUARTER SEC CORNER SET A POST & RAISED MOUND OF EARTH & SOD

5280.0 SET CORNER TO SECS 9,10,15,16 MARKED A POST AND RAISED AMOUNT OF EARTH & SOD LAND ROLLING 1ST RATE PRAIRIE GROWTH GRASS & WEEDS

1833 HARRISON (NOV 3RD) T4N R11E 4TH MER. EAST ON RAND.

BET. 9 & 16

1386.00 BROOK 3.3' CRS N

2640.0 TEMPY 1/4 SEC COR.

5235.12 INT. E BDY 9.24' NORTH OF POST LAND 1ST RATE ROLLING PRAIRIE GROWTH GRASS & WEEDS

WEST COR. WEST BET 9 & 16

2617.56 QUARTER SEC COR. {SET A POST AND RAISED A MOUND OF EARTH & SOD

5235.12 SEC COR.

1833 HARRISON (NOV 2ND) T4N R11E 4TH MER. EAST ON RAND.

BET. 10 & 15

2640.0 TEMPY 1/4 SEC COR.

5290.56 INT. E BDY 39.6' NORTH OF POST LAND ROLLING 1ST RATE PRAIRIE GROWTH GRASS & WEEDS

WEST COR. WEST BET 10 & 15

2645.28 QUARTER SEC COR. {SET POST & RAISED A MOUND OF EARTH & SOD

5290.56 INT. SEC COR

1833 HARRISON (NOV) T4N R11E 4TH MER. NORTH

BET. 9 & 10

2640.0 QUARTER SEC COR. SET A POST & RAISED MOUND OF EARTH & SOD

3630.0 LEAVE PRAIRIE & ENTER TIMBER

3953.40 BURR OAK 12

5280.0 COR TO SECS 3,4,9,10 {BURR OAK 12 N50W 30.36'; BURR OAK 16 S60W 42.24'; BURR OAK 12 S34E 30.36'; BURR OAK 14 N55E 100.98' LAND 1ST 1/2 MILE ROLLING PRAIRIE 2ND 1/2 ROLLING 2ND RATE WITH ALL BURR OAK TIMBER

1851 STEBBINS PORTER TWP ROAD REC BK#1 PG 4 BEGINNING AT A POINT ON THE HIGHWAY LEADING WEST FROM VAN PATTENS BRIDGE ACROSS SEC 10 & 8(9?), WHERE THE LINE WHICH DIVIDES THE NW 1/4 OF THE SEC 10 RUNNING NORTH AND SOUTH INTERSECTS SAID HIGHWAY; THENCE SOUTH ON SAID LINE 11,503.14' TO THE 1/4 LINE RUNNING EAST & WEST, THROUGH SEC 22 T4NR11E AND THE WHOLE LENGTH OF THE RD IS 11,501.82'. COURSES GIVEN ACCORDING TO THE TRUE MERIDIAN. VARIATION OF NEEDLE 7 3/4 HARRISON STEBBINS, SURVEYOR

1858 PORTER TWP RD REC BK 1 PG 12 BEGINNING AT A POINT ON THE SECTION LINE BETWEEN SECTIONS 21 & 22 1438.80' SOUTH OF THE NE COR OF SEC 21 AT THE TERMINATION OF A ROAD CONTINUING SOUTH AND AT THE INTERSECTION OF A ROAD RUNNING NORTH WESTERLY THROUGH SECTIONS 21 & 22, THENCE NORTH ON THE SEC LINE BETWEEN SECTIONS 21 & 22, 15 & 16, 9 & 10, 11,998.8' TO THE NE COR OF SEC 9. ALSO BEGINNING AT THE NE COR OF THE WEST 1/2 OF THE NW 1/4 OF SEC 15; THENCE WEST ON THE SEC LINE BETWEEN SECTIONS 10 & 15, 9 & 16, 6,600' TO THE SW COR OF SEC 9 AND THE LINES ABOVE DESCRIBED ARE THE

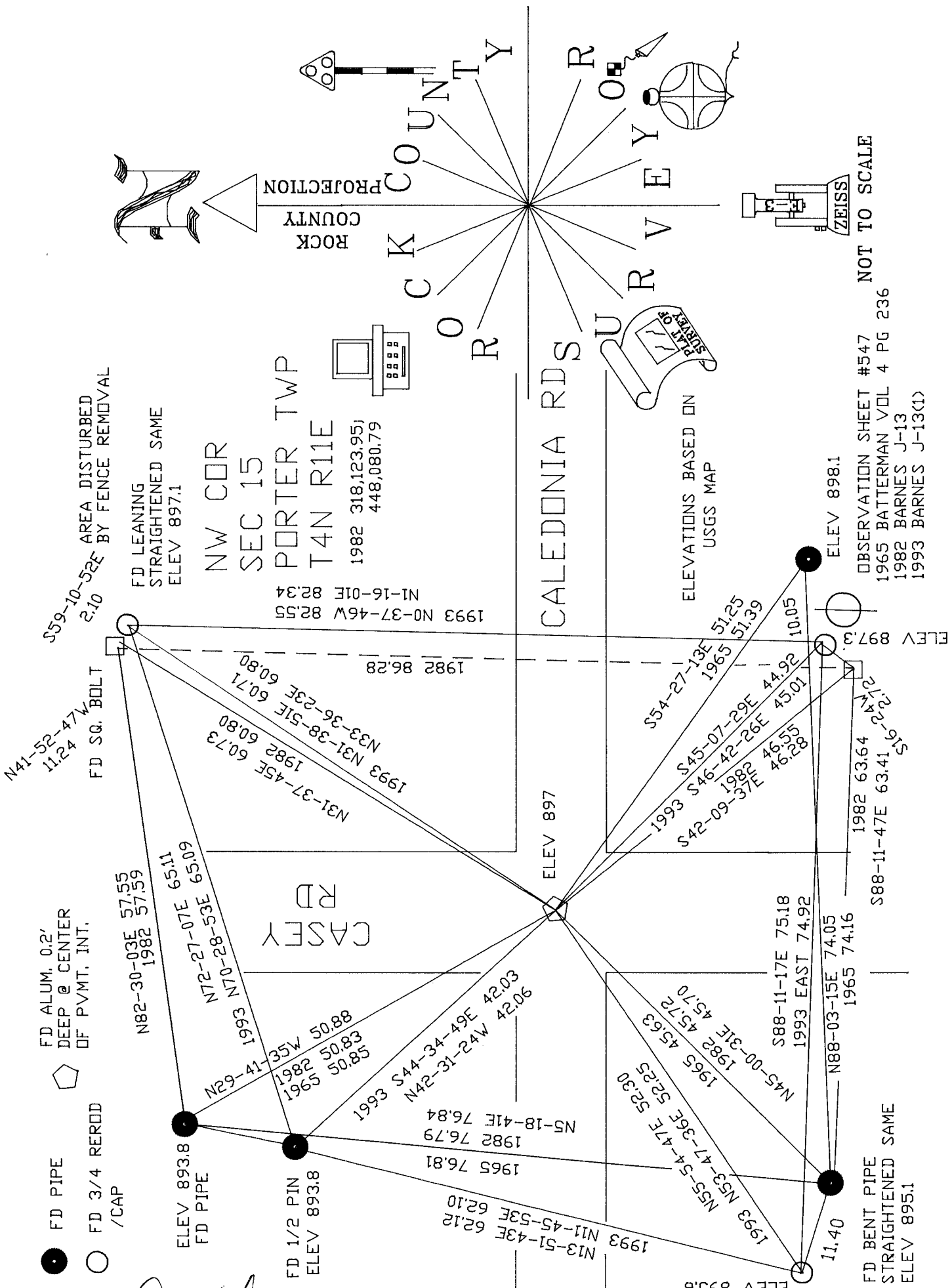
SHEET 1 OF 3

CORNER CODE J-13(2)

Donald J. Boerner
3/17/2009

- FD PIPE
- FD 3/4 REROD /CAP
- ◻ FD ALUM. 0.2' DEEP @ CENTER OF PVMT. INT.

Donald Barnes
 EMBOSSED SEAL
 3/17/2009



S59-10-52E AREA DISTURBED
 2.10 BY FENCE REMOVAL

FD LEANING
 STRAIGHTENED SAME
 ELEV 897.1

NW COR
 SEC 15
 PORTER TWP
 T4N R11E
 1982 318,123.95;
 448,080.79

1993 NO-37-46W 82.55
 N1-16-01E 82.34

ELEVATIONS BASED ON
 USGS MAP

OBSERVATION SHEET #547 NOT TO SCALE
 1965 BATTERMAN VOL 4 PG 236
 1982 BARNES J-13
 1993 BARNES J-13(1)

3 OF 3
 SHEET 3

J-13(2)