

Paper weight-110# (minimum)

Black nonfading ink required

U.S. PUBLIC LAND SURVEY MONUMENT RECORD

For Public Land Survey Corners In:

WI ADMINISTRATIVE CODE A-E 7.08 REQUIREMENT

T. 4 N. R. 11 E. 4th P.M.

REV 10/23/2004

USMONREC.DWG

CORNER CODE INDEX

PORTER TWP

ROCK COUNTY WI

IF AVAILABLE

ROCK COUNTY COORDINATES PREFERRED

A	1	2	3	4	5	6	7	8	9	10	11	12	13	14	15	16	17	18	19	20	21	22	23	24	25	A
B																										B
C																										C
D																										D
E																										E
F																										F
G																										G
H																										H
J																										J
K																										K
L																										L
M																										M
N																										N
O																										O
P																										P
Q																										Q
R																										R
S																										S
T																										T
U																										U
V																										V
W																										W
X																										X
Y																										Y
Z																										Z

North _____ Elev. _____

East _____

Hor. Datum _____ Vert. Datum _____

LATITUDE _____ ELLIPS. HT. _____

LONGITUDE _____

NAD83(91) _____ NETWORK ADJ. YR _____

GPS (X) _____ TRAVERSE (X) _____

BASED ON THE FOLLOWING CONTROL:

PLACE MONUMENT SYMBOL AT PROPER LOCATION ON ABOVE INDEX

CORNER MONUMENT

WITNESS MONUMENT

BEARINGS ARE BASED ON: _____

FIELD BOOK _____ PAGE # _____

SHEET 1 OF 4

SHOW A PLAN VIEW DRAWING DEPICTING THE CORNER MONUMENT AND SURROUNDING PHYSICAL FEATURES, INCLUDING THE EXCAVATION AREA AND DEPTH.

PLANNING & ZONING COMMITTEE ADOPTED THIS FORM ON 12/2/1982

CORNER CODE A-7(2)

PO504 N1/4CORSEC5

(B) Describe any record evidence, monument evidence, occupational evidence, testimonial evidence or any other material evidence you considered, and whether the monument was found or placed.

- 1833 (SEP 22) BRINK & MULLETT T5N R11E WEST ON SOUTH SIDE
SECTION 32
- 2640.0 SET QUARTER SECTION POST BLACK OAK 14 N32E
147.18'; BLACK OAK 14 N22W 83.82'
- 3003.0 BUR OAK 12 IN DIAMETER
- 3762.0 ENTER MARSH
- 4026 STREAM 2.64' (264' ??) @ SE
- 4356 LEAVE MARSH
- 5280 SET POST CORNER SECTIONS 31 & 32 BUR OAK 8
N66W 4.62'; BUR OAK 10 N78E 55.44' LAND
ROLLING SECOND RATE WHITE BLACK & BUR OAK
- 1833 ORIG GOV PLAT NW COR SEC 4 PORTER TWP IS 112.20'
EAST OF SW COR SEC 33 DUNKIRK TWP.
- 1833 ORIG GOV PLAT NW COR SEC 5 PORTER TWP IS 66.00' EAST
OF SW COR SEC 32 DUNKIRK TWP.
- 1853 STEBBINS TWP RD BK1 PG 5 BEGINNING AT A POINT ON THE
HIGHWAY LEADING WESTERLY FROM JOHN BOYCES ACROSS
SECTIONS 22,21,20 & 29 WHERE THE NORTH & SOUTH
CENTER LINE OF SECTION 20 INTERSECTS THE SAME; THENCE
NORTH ON THE CENTER LINE OF SEC 20, 541.2' TO THE 1/4
POST ON THE NORTH LINE OF SEC 20; THENCE NORTH ON
THE CENTER LINES OF SECTIONS 17 & 8 & 5 TO THE 1/4 POST
ON THE NORTH LINE OF SEC 5 T4N R11E AND THE WHOLE
LENGTH OF THE ROAD IS 3 MILES 541.2'. COURSES GIVEN
ACCORDING TO THE TRUE MERIDIAN. VARIATION OF NEEDLE
7 3/4 H. STEBBINS-SURVEYOR
- 1867 PORTER BK 2 PG 7 BEGINNING AT THE NORTH EAST
CORNER OF SEC 5 IN THE TOWN OF PORTER AND AT THE
SOUTH EAST COR OF SEC 32 IN THE TOWN OF DUNKIRK,
DANE COUNTY; THENCE RUNNING WEST ON SAID LINE UNTILO
NEAR THE COR OF MR. SAVAGES ORCHARD. SAID ORCHARD
BEING ON THE SOUTH EAST QUARTER OF SEC 31 IN SAID
TOWN OF DUNKIRK; THENCE BEARING SOUTH 2 RODS;
THENCE WEST UNTIL IT INTERSECTS THE COOKVILL AND
DUNKIRK RD RUNNING NORTH AND SOUTH ON THE
CENTERLINE OF SEC 6 IN PORTER AND THE NORTH AND
SOUTH CENTERLINE OF SEC 31 IN DINKIRK. THE SAID
HIGHWAY IS LAID OUT ON THE NORTH LINE OF SEC 5 AND ON
THE NORTHLINE OF SEC 6 UNTIL IT REACHES THE NORTH
WEST COR OF THE NED 1/4 OF SAID SEC 6 INTERSECTING THE
ROAD RUNNING FROM COOKVILL TO DUNKIRK BEARING
SOUTH 2 RODS OPPOSITE J.W. SAVAGES ORCHARD AND THE
WHOLE LENGTH OF SAID RD BEING 1 1/2 MILES MORE OR
LESS THE LINE OF SAID SURVEY TO BE CENTER OF SAID
HIGHWAY AND THE SAME IS ESTABLISHED 4 RODS IN WIDTH
- 1870 RUGER VOL 2 PG 24 ESTABLISHED QUARTER CORNER FROM
SECTION CORNERS. SET HH STONE 11 X 5 X 3 & PUT PIECE
OF WHITE BRICK ON NORTH & SOUTH. AT SOUTH QUARTER
CORNER OF SECTION 32 FOUND HH & SET PIECE OF WHITE
BRICK ON NORTH & SOUTH.
- 1962 BATTERMAN JR. VOL 4 PG 143 FOUND WHITE BRICK & 2
HARDHEADS AT N 1/4 CORNER OF SECTION 5. N 1/4 COR
SEC 5 IS 81.75 EAST OF S 1/4 COR SEC 32 T5N R11E.
REFERENCED SAME
- 1963 ELY #12621&12620 1" IRON STAKE. SHOWS A R/R SPIKE AT
THE S 1/4 COR SEC 32. THE S 1/4 COR SEC 32 IS WEST.
2658.10 TO R/R @ NE COR SEC 6
- 1963 LEE #3559 FD & REF COR IN 1962
- 19?? UNKNOWN #3563 TIES FOR SE COR SEC 32

Donald Barnes
3/17/2009

SHEET 1 OF 4
CORNER CODE A-7(2)

PO504 N1/4CORSEC5

- 1969 BATTERMAN JR. VOL 4 PG 421 SET PK AT N 1/4 CORNER OF SECTION 5. FOUND PIPE AT S 1/4 CORNER OF SECTION 32 T5N R11E. N 1/4 COR IS NB4-50E 81.97 OF S 1/4 COR SEC 32. REFERENCED SAME. BEARINGS ARE ASTRONOMIC NORTH BEARINGS NB9-31-45E BETWEEN NW COR SEC 5 TO S 1/4 COR SEC 32
- 1988 BARNES FB#3 PG 17 I FOUND A PIPE AT THE S 1/4 CORNER OF SECTION 32 AND A PK AND PK STEM AT THE N 1/4 CORNER OF SECTION 5. I DID NOT ACCEPT THE PK OR PK STEM. I USED THE RECORD ANGLE AND DISTANCE AT THE SOUTH 1/4 CORNER OF SECTION 32. THIS IS IN HARMONY WITH THE FOUND REFERENCE PIPE ON THE NORTH SIDE OF THE ROAD. THE REFERENCE PIPE ON THE SOUTH SIDE OF THE ROAD DOES NOT AGREE WITH THE DISTANCE TO THE SOUTH 1/4 CORNER.
- 1984 COMBS CSM VOL 11 PG 588 SET PK FROM TIES IN VOL 4 PG 144. EASTERLY 1347.83 TO SET R/R @ 1/16TH COR. 2695.66 TO SET PK FROM TIES IN VOL 4 PG 143 @ NE COR SEC 5.
- 1988 BARNES VOL 6 PG 387 NB4-45-56E 81.91 OF S 1/4 COR SEC 32. SOLAR NB9-31-30E 2591.24 FROM NW COR SEC 5 TO S 1/4 COR SEC 32. 2672.82 BETWEEN NW & N 1/4 COR SEC 5
- 1988 BARNES A-7 NB5-22-07E 81.87 TO PK STEM NEAR THE N 1/4 COR SEC 5, NB5-40-26E 82.10 TO PK NEAR N 1/4 COR SEC 5, NB5-42-26E 81.97 TO S 1/4 COR SEC 32. FD PIPE @ S 1/4 COR SEC 32. FOR THE N 1/4 COR SEC 5, I DID NOT ACCEPT THE FD PK OR FD PK STEM. I USED THE RECORD ANGLE AND DISTANCE AT THE SOUTH 1/4 COR OF SEC 32. THIS IN HARMONY WITH THE FOUND REFERENCE PIPE ON THE NORTH SIDE OF THE ROAD. THE REFERENCE PIPE ON THE SOUTH SIDE OF THE ROAD DOES NOT AGREE WITH THE DISTANCE TO THE SOUTH 1/4 CORNER.
- 2002 COMBS A-7(1) USED DATA FROM B-8-1988 TIE SHEET OF DONALD BARNES TO SET PK NAIL AT COR. NEITHER PK OR PK STEM AS SHOW PREVIOUSLY WERE PRESENT. USED SW PIPE AND WEST PIPE FROM TIE SHEET TO SET PK NAIL, DIDN'T USE NORTH REFERENCE PIPE AS IT DIDN'T CHECK BARNES 1988 MEASUREMENTS. CALLS FOR 81.97 BETWEEN N 1/4 & S 1/4 COR SEC 32.
- 2002 COMBS #14500 FD R/R SPIKE S1-32-25W 2586.18 TO SET PIN @ CENTER OF SEC 5, S1-32-25W 5204.62 TO FD R/R SPIKE @ S 1/4 COR SEC 5.

FD COMBS" PK & REFERENCE MONUMENTS.

C) Was the corner restored through acceptance of (1) an obliterated evidence location, or, (2) a found perpetuated location?

I USED MY 1988 REFERENCE TIES TO DETERMINE THE LOCATION. THE TIES PERPETUATES RUGERS POSITION THAT BATTERMAN FD. FD PIPE @ THE S 1/4 COR SEC 32 IS IN HAMONY WITH RECORD TIES.

D. Barnes
3/17/2009

SHEET 2 OF 4
CORNER CODE A-7(2)

PO504 N1/4CORSEC5

D) Describe any material discrepancy between the location of the corner as restored or reestablished and the location of that corner as previously restored or reestablished by distance and direction. Show the discrepancy on the plan view drawing under (a), above. Show the distances between the corner as previously restored or reestablished and (1) the corner as restored or reestablished, and (2) to at least 4 of the witness monuments shown on the drawing in (a), above.

THE DISCREPANCY OF S19-23W 0.19' IS SHOWN IN THE MAP.

(E) Was the corner reestablished through lost corner proportionate methods? If so, show the method, including the directions and distances to other public land survey corners used as evidence or used for proportioning the corner location.

NO

I, **Donald Barnes**, hereby certify that the corner location as identified by the corner code index was determined by me under my direction and control and that this U.S. Public Land Survey Monument Record is correct and complete to the best of my knowledge and belief.

Donald Barnes
Seal

Emboss
3/17/2009

SHEET 3 OF 4

CORNER CODE **A-7(2)**

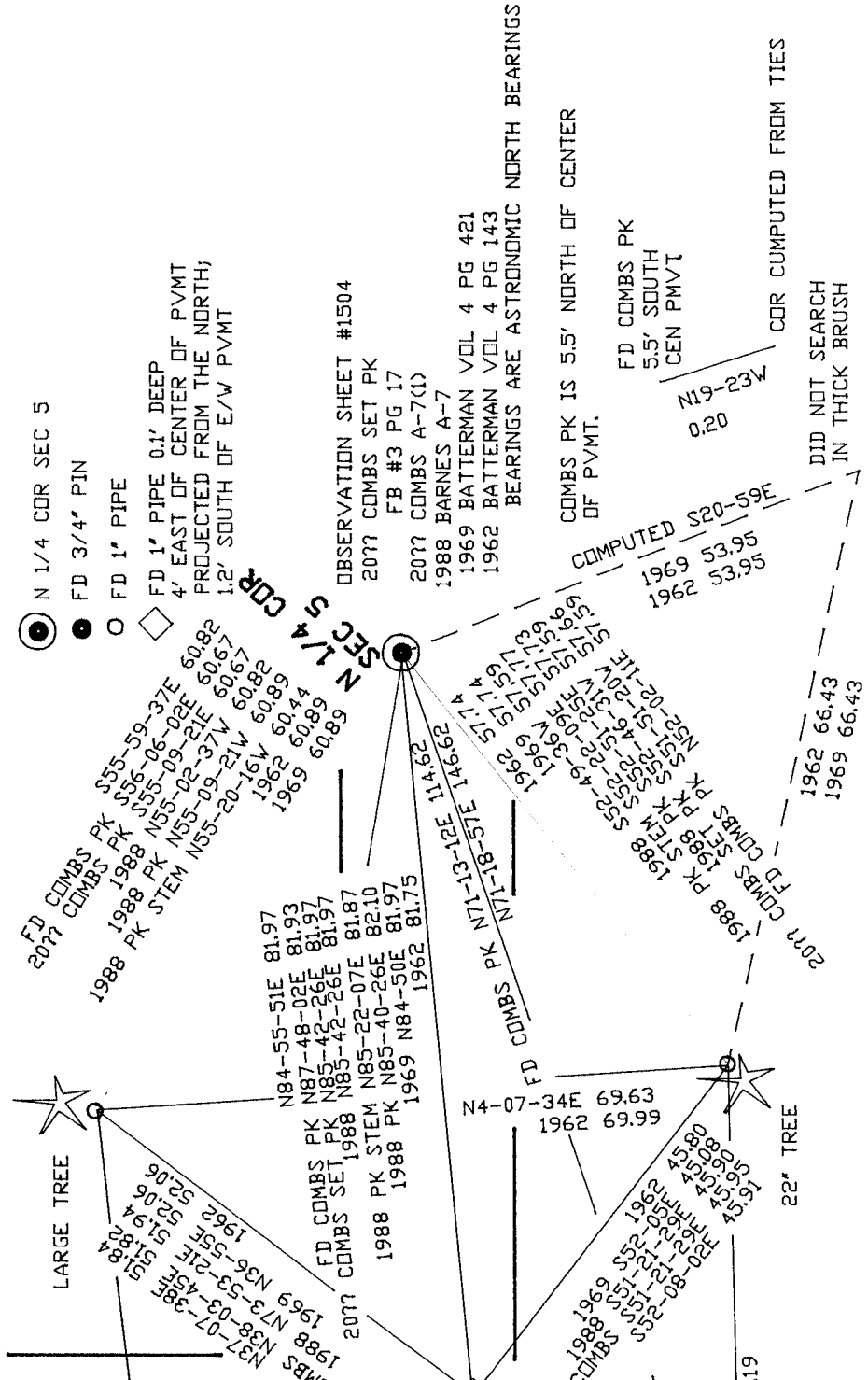
A.E. 7.08 REQUIREMENT

3/17/2009

N 1/4 COR
SEC 5
PORTER TWP

N82-58-59E 83.33
FD COMBS PK S79-50-48E 135.24
2077 COMBS S79-55-11E 135.15
S58-49-06E 60.72

STEBBINSVILLE
RD



- ⊙ N 1/4 COR SEC 5
- FD 3/4" PIN
- FD 1" PIPE
- ◇ FD 1" PIPE 0.1' DEEP
4' EAST OF CENTER OF PVMT
PROJECTED FROM THE NORTH;
1.2' SOUTH OF E/W PVMT

OBSERVATION SHEET #1504
2077 COMBS SET PK
FB #3 PG 17
2077 COMBS A-7(1)
1988 BARNES A-7
1969 BATTERMAN VOL 4 PG 421
1962 BATTERMAN VOL 4 PG 143
BEARINGS ARE ASTRONOMIC NORTH BEARINGS

COMBS PK IS 5.5' NORTH OF CENTER
OF PVMT.
FD COMBS PK
5.5' SOUTH
CEN PMVT
M19-23W
0.20

COR COMPUTED FROM TIES
DID NOT SEARCH
IN THICK BRUSH

COMPUTED S20-59E
1969 53.95
1962 53.95

1962 66.43
1969 66.43

N4-07-34E 69.63
1962 69.99

22" TREE

S88-49-41W 63.19

38" TREE

SHEET 4 OF 4

A-7(2)