

# U.S. PUBLIC LAND SURVEY MONUMENT RECORD

For Public Land Survey Corners In: WI ADMINISTRATIVE CODE A-E 7.08 REQUIREMENT  
**T. 4 N. - R. 11 E. of the 4th P.M.**

### CORNER CODE INDEX

(PLACE "◆" SYMBOL AT PROPER PLSS CORNER LOCATION)

	2	3	4	5	6	7	8	9	10	11	12	13	14	15	16	17	18	19	20	21	22	23	24	25		
A																										A
B																										B
C																										C
D																										D
E																										E
F																										F
G																										G
H																										H
J																										J
K																										K
L																										L
M																										M
N																										N
O																										O
P																										P
Q																										Q
R																										R
S																										S
T																										T
U																										U
V																										V
W																										W
X																										X
Y																										Y
Z																										Z
	1	2	3	4	5	6	7	8	9	10	11	12	13	14	15	16	17	18	19	20	21	22	23	24	25	

PORTER TWP  
ROCK COUNTY WI

### COORDINATES

(GNSS DERIVED VIA WISCORS)

NORTHING: 320945.30      ELEV: N/A

EASTING: 464052.20

Hor. Datum: WISCRS, ROCK DATUM (NA2011)

Vertical Datum: NAVD 88, (If applicable)

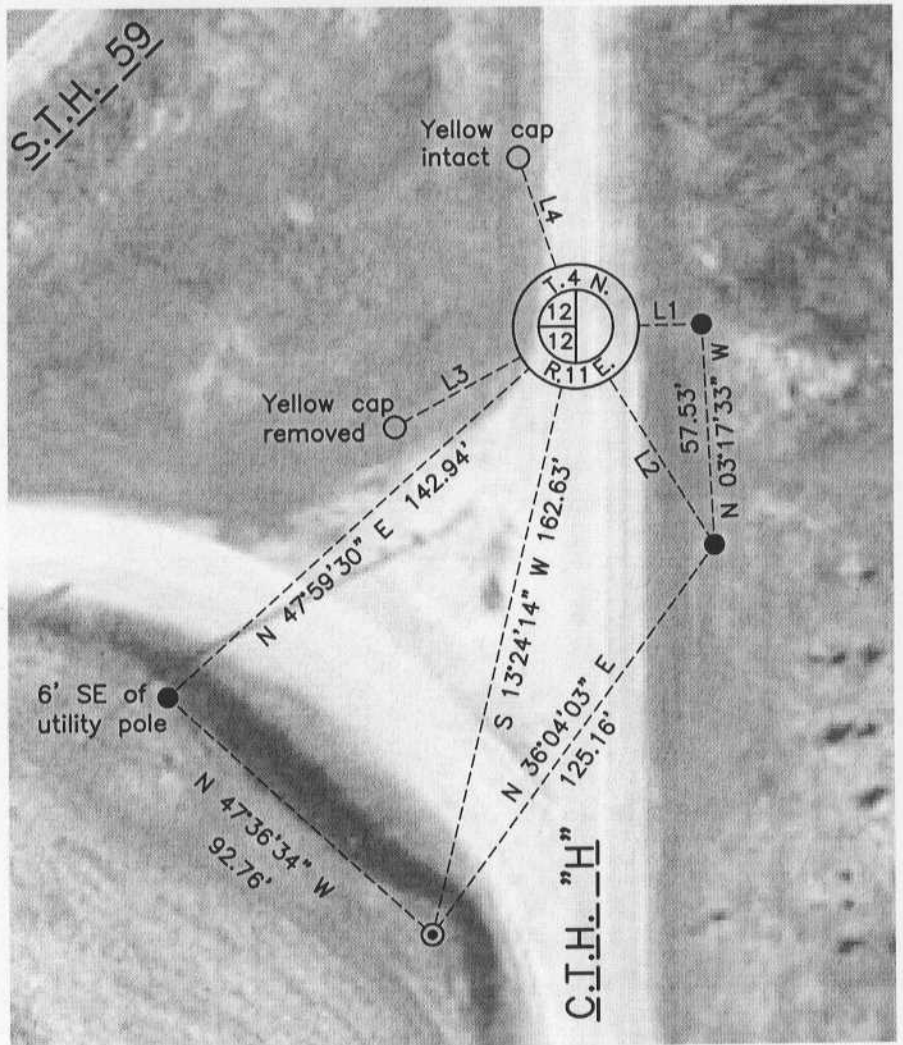
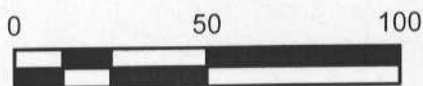
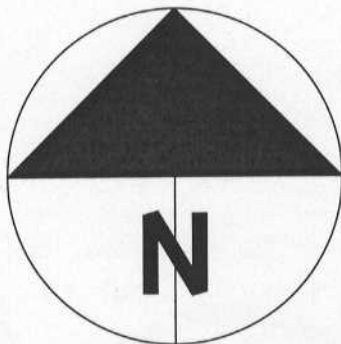
#### (a) LEGEND

- - 3/4" x 24" REBAR SET, (RED CAP W/"PLSS WITNESS")
- - 3/4" IRON REBAR FOUND, (PREVIOUS MONUMENT RECORD)
- ⊙ - IRON REBAR FOUND, (PT#2 from 2014 plan set)
- (#) - PREVIOUS TIE-SHEET DIMENSION

LINE	BEARING	DISTANCE	
L1	N 89°17'35" E	32.68'	
L2	S 32°14'56" E	67.44'	
L3	S 61°01'57" W	53.56'	(53.54')
L4	N 18°29'09" W	46.59'	(46.61')



- ALUMINUM MONUMENT FOUND



**B) Describe any record evidence, monument evidence, occupational evidence, testimonial evidence or any other material evidence you considered, and whether the monument was found or placed.**

I found the aluminum monument per the G-25 Monument record, (Barnes – 1995). A Barnes 2009 monument record indicates a broken monument and ties were found; no sketch was shown. I found an intact aluminum monument, (excavated to cap), and accepted two witnesses, (W and NW), from the 1995 record. The NE tie is leaning to the east and the easterly tie is most likely there however, beneath fill material. I did not excavate due to the apparent depth. I found a control point from the plans for the intersection realignment, (impetus for this project), and match the coordinates to 0.01' N & S. I used the control point as a witness and set 3 additional per the sketch. The witnesses found & accepted will be destroyed/buried by future construction operations.

**C) Was the corner restored through acceptance of (1) an obliterated evidence location, or, (2) a found perpetuated location?**

Found perpetuated location.

**D) Describe any material discrepancy between the location of the corner as restored or reestablished and the location of that corner as previously restored or reestablished by distance and direction. Show the discrepancy on the plan view drawing under (a), above. Show the distances between the corner as previously restored or reestablished and (1) the corner as restored or reestablished, and (2) to at least 4 of the witness monuments shown on the drawing in (a), above.**

I did not find a discrepancy between the corner restored and a previously documented corner location. *Discrepancy* being defined as *disagreeing* with a corner location, *not* as noting dimensional differences between current/former tie sheets due to measuring methods. The current and *most recent* tie-sheet dimensions filed for the corner are noted.

**(E) Was the corner reestablished through lost corner proportionate methods? If so, show the method, including the directions and distances to other public land survey corners used as evidence or used for proportioning the corner location.**

N/A

I, **Jason R. Houle**, hereby certify that the corner location as identified by the corner code index was determined by me under my direction and control and that this U.S. Public Land Survey Monument Record is correct and complete to the best of my knowledge and belief.

CORNER CODE: G-25  
(A.E. 7.08 REQUIREMENT)

