

Paper weight-110# (minimum)

Black nonfading ink required

# U.S. PUBLIC LAND SURVEY MONUMENT RECORD

For Public Land Survey Corners In:

WI ADMINISTRATIVE CODE A-E 7.08 REQUIREMENT

T. 4 N. R. 11 E. 4th P.M.

REV 10/23/2004

USMONREC.DWG

CORNER CODE INDEX

**PORTER** TWP

**ROCK COUNTY WI**

IF AVAILABLE

ROCK COUNTY COORDINATES PREFERRED

1	2	3	4	5	6	7	8	9	10	11	12	13	14	15	16	17	18	19	20	21	22	23	24	25	
A																									A
B																									B
C	6																								C
D																									D
E																									E
F																									F
G	7																								G
H																									H
J																									J
K																									K
L	18																								L
M																									M
N																									N
O																									O
P	19																								P
Q																									Q
R																									R
S																									S
T	30																								T
U																									U
V																									V
W																									W
X	31																								X
Y																									Y
Z																									Z
	1	2	3	4	5	6	7	8	9	10	11	12	13	14	15	16	17	18	19	20	21	22	23	24	25

North \_\_\_\_\_ Elev. \_\_\_\_\_

East \_\_\_\_\_

Hor. Datum \_\_\_\_\_ Vert. Datum \_\_\_\_\_

LATITUDE \_\_\_\_\_ ELLIPS. HT. \_\_\_\_\_

LONGITUDE \_\_\_\_\_

NAD83(91) \_\_\_\_\_ NETWORK ADJ. YR \_\_\_\_\_

GPS (X) \_\_\_\_\_ TRAVERSE (X) \_\_\_\_\_

BASED ON THE FOLLOWING CONTROL:

PLACE MONUMENT SYMBOL **◆** AT PROPER LOCATION ON ABOVE INDEX

**◆** CORNER MONUMENT

**○** WITNESS MONUMENT

(a)

BEARINGS ARE BASED ON: \_\_\_\_\_

FIELD BOOK \_\_\_\_\_ PAGE # \_\_\_\_\_

SHEET 1 OF 4

SHOW A PLAN VIEW DRAWING DEPICTING THE CORNER MONUMENT AND SURROUNDING PHYSICAL FEATURES, INCLUDING THE EXCAVATION AREA AND DEPTH.

PLANNING & ZONING COMMITTEE ADOPTED THIS FORM ON 12/2/1982

CORNER CODE E 21(2)



- P0539 E1/4COR-SEC11  
 " 66' WIDE THE LINE SURVEYED TO BE THE CENTER OF SAID ROAD.
- 1868 PORTER TWP RD REC BK 2 PG 8 " AND IS HEREBY LAID OUT PURSUANT TO SAID APPLICATION WHEREOF AN ACCURATE SURVEY HAS BEEN MADE, WHICH IS AS FOLLOWS, TO WIT: BEGINNING AT THE QUARTER POST OF SEC LINE BETWEEN SECTIONS 11 & 12 T4 & R 11; THENCE SOUTH ON SAID LINE 2640.00 TO THE SE COR OF SEC 11; THENCE S14E 785.40' TO A STAKE; THENCE S3 1/4E 972.18 TO A STAKE; THENCE S80W 122'; THENCE S40W 231'; THENCE S7E 198'; THENCE S46E 280.5'; THENCE S45W ACROSS THE CATFISH RIVER 416.46' TO A POINT ON THE EAST AND WEST QUARTER LINE OF SEC 14 58.74' WEST OF THE QUARTER POST BETWEEN SEC 13 AND 14. THE LINE OF SAID SURVEY TO BE THE CENTER OF SAID HIGHWAY. THE SAME IS ESTABLISHED 66' IN WIDTH BARNARD{SUPERVISORS OF PORTER.
- 1868 PORTER TWP RD REC BK 2 PG 8 BEGINNING AT THE QUARTER POST OF SEC LINE BETWEEN SECTIONS 11 & 12 T4 AND R11; THENCE SOUTH ON SAID LINE 2640' TO THE SE COR OF SEC 11; THENCE S14E 785.4' TO A STAKE; THENCE S3 1/4E 972.18' TO A STAKE; THENCE S80W 122'; THENCE S40W 231'; THENCE S7E 198'; THENCE S46E 280.5'; THENCE S45W ACROSS THE CATFISH RIVER 416.46' TO A POINT ON THE EAST & WEST QUARTER LINE OF SEC 14, 58.74' WEST OF THE QUARTER POST BETWEEN SEC 13 & 14. THE LINE OF SAID SURVEY TO BE THE CENTER OF SAID HIGHWAY. THE SAME IS ESTABLISHED 66' IN WIDTH
- 1871 RUGER VOL 2 PG 63 FOUND LIMESTONE & 2 OLD STAKES UNDER IT, ONE VERY MUCH DECAYED, DROVE NEW STAKE DEEP & PUT LIMESTONE ON TOP OF IT 1' 6X7X6 SURROUNDED IT WITH 4 LIMESTONES. USED TO SUBDIVIDE SECTION 12. SHOWS 1322.06 TO THE S 1/16TH CORNER OF THE NW QUARTER OF SECTION 12.
- 1871 RUGER VOL 2 PG 78 STATES NOTHING ABOUT MON. 1322.06 TO LIMESTONE 16X12X5 @ N 1/16TH COR OF SW 1/4 SEC 12, 2644.12 TO LIMESTONE 19X7X5 @ CENTER OF SEC 12
- 1886 RUGER VOL 2 PG 282 FOUND CORNER AS SET BY SELF. USED TO SUBDIVIDE SECTION 11. SHOWS 2743.95 TO THE CENTER OF SECTION 11, 2578.84 TO THE NE CORNER OF SECTION 11; AND 2753.52 TO THE SE CORNER OF SECTION 11. SHOWS A BEND IN THE SECTION LINE AT THE QUARTER CORNER.
- 1965 BATTERMAN JR. VOL 4 PG 223 SET 1" PIPE 3' DEEP WITH 1 L.S. & 4 L.S. SHOWS TIES FOR CORNER. STATES WORK WAS DONE BY SURVEYOR'S OF W.P.& L. CO. REF PKS 10.91 SW & 9.49 SE. REFERENCE COR. NORTH OF E/W CENTERLINE & EAST OF N/S CENTER LINE.
- 1991 BARNES G-21 & VOL 6 PG 412 FOUND PK AND REFERENCE PIPES. ACCEPTED FOUND PERPETUATED PK. FIELD BOOK # 3 PG 28. FD SW PK 10.93 (REC 10.91); FD SE PK 9.50 (REC 9.49) CORNER IS 1.8' NORTH OF CENTER OF PVMT & 3' EAST OF CENTER OF PVMT THAT IS TO THE NORTH.
- 2001 BARNES G-21(1) FOUND REFERENCE PIPES. DID NOT FIND PK NOR SET MONUMENT. ACCEPTED FOUND PERPETUATED LOCATION. S00-09-02E 2755.88 TO SE COR SEC 11, N1-21-35W 2580.69 TO ALUM @ NE COR SEC 11, S88-23-26W 2746.14 TO CENTER OF 11, S88-23-37W 5441.06 TO CONC. @ W 1/4 COR SEC 11. 320,962.77; 458,811.64
- 2007 RIESOP CSM VOL 31 PG 10 CONC. NAIL FROM TIES, S88-23-32W 2746.22 TO ALUM @ CENTER OF SEC 11, N01-21-42W 2580.77 TO ALUM @ NE COR SEC 11.

SHEET 2 OF 24  
 CORNER CODE G-21(2)

*Donald Barnes*  
 3/17/09

P0539 E1/4COR-SEC11

USED MY 2001 TIE SHEET. SET TRAV #75 (3/4 REROD) & MEASURED TO TIES.

C) Was the corner restored through acceptance of (1) an obliterated evidence location, or, (2) a found perpetuated location?

ACCEPTED FD LOCATION AS PERPETUATED BY RUGER & BATTERMAN.

D) Describe any material discrepancy between the location of the corner as restored or reestablished and the location of that corner as previously restored or reestablished by distance and direction. Show the discrepancy on the plan view drawing under (a), above. Show the distances between the corner as previously restored or reestablished and (1) the corner as restored or reestablished, and (2) to at least 4 of the witness monuments shown on the drawing in (a), above.

NO

(E) Was the corner reestablished through lost corner proportionate methods? If so, show the method, including the directions and distances to other public land survey corners used as evidence or used for proportioning the corner location.

NO

I, Donald Barnes, hereby certify that the corner location as identified by the corner code index was determined by me under my direction and control and that this U.S. Public Land Survey Monument Record is correct and complete to the best of my knowledge and belief.

*Donald*  
Seal

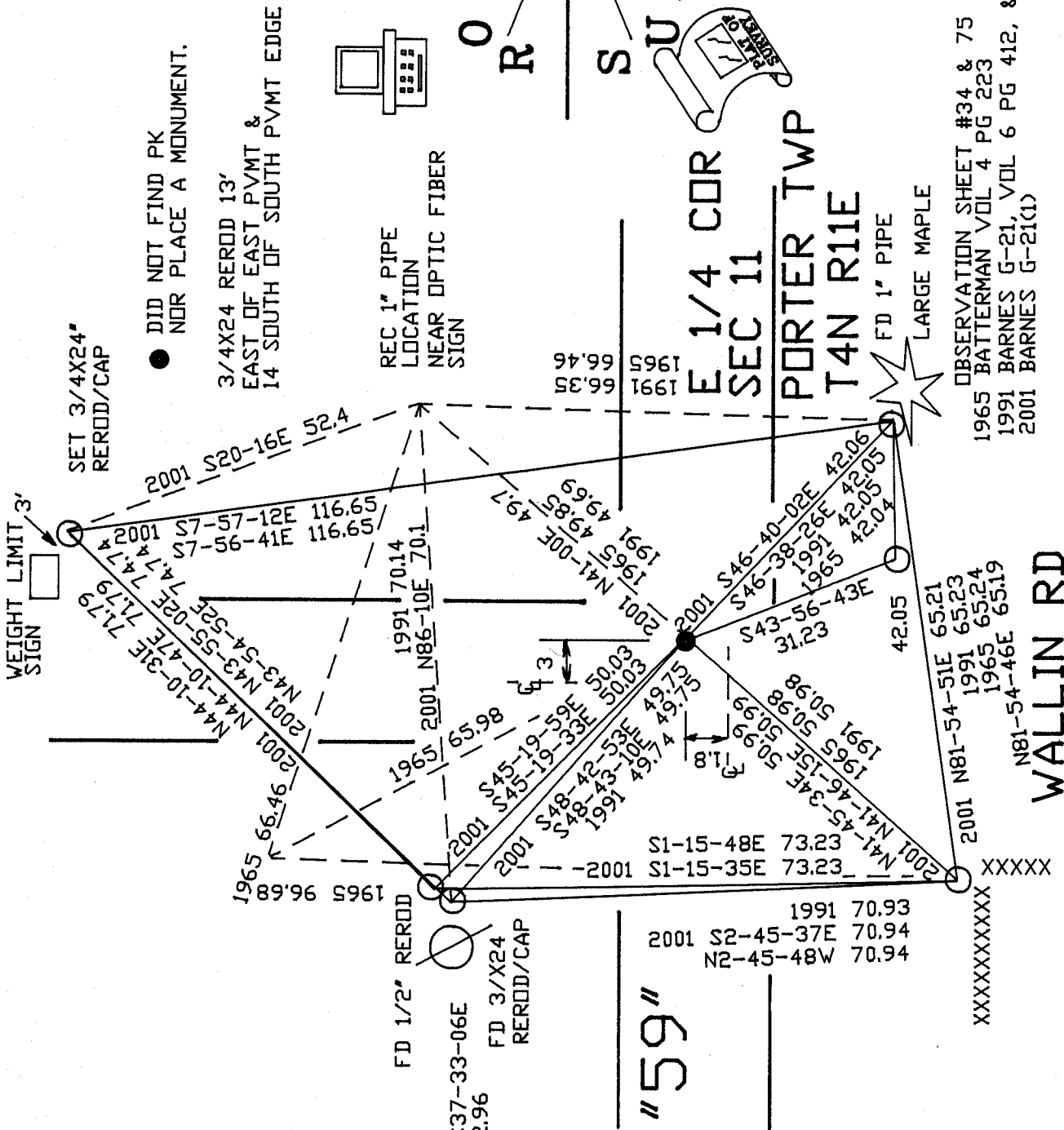
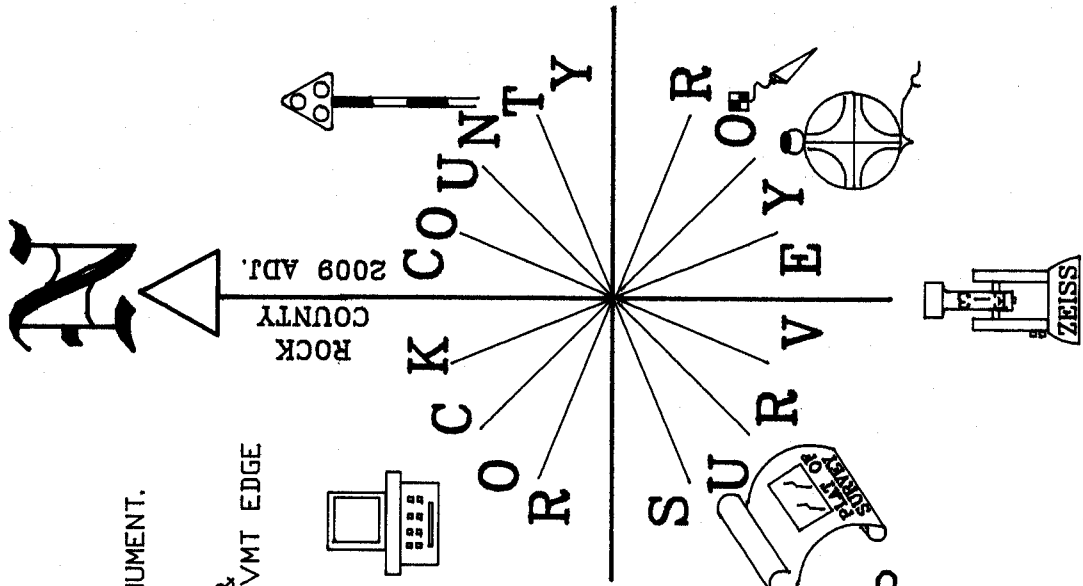
*Barnes*  
E1/4COR-SEC11

*3/17/09*

SHEET 3 OF ~~4~~ 4

CORNER CODE G-21(2)

A.E. 7.08 REQUIREMENT



● DID NOT FIND PK  
NDR PLACE A MONUMENT.

3/4X24 REROD 13'  
EAST OF EAST PVMT &  
14 SOUTH OF SOUTH PVMT EDGE

REC 1" PIPE  
LOCATION  
NEAR OPTIC FIBER  
SIGN

SET 3/4X24"  
REROD/CAP

WEIGHT LIMIT 3'  
SIGN

OBSERVATION SHEET #34 & 75  
1965 BATTERMAN VOL 4 PG 223  
1991 BARNES G-21, VOL 6 PG 412, & FB#3 PG 28  
2001 BARNES G-21(K)

WALLIN RD

*Donald Barnes*  
EMBOSSED SEAL  
3/17/2009

STH "59"

SHEET 3 OF 4

G-21(2)

XXXXXX

XXXXXX

2001 N81-54-51E 65.21  
1991 65.23  
1965 65.24  
1965 65.19  
N81-54-46E 65.19

42.05

FD 1" PIPE  
LARGE MAPLE

E 1/4 COR  
SEC 11  
PORTER TWP  
T4N R11E

1991 70.93  
2001 S2-45-37E 70.94  
N2-45-48W 70.94

1991 66.35  
1965 66.46

1991 49.75  
1965 49.85  
2001 N41-02E 49.17

1991 49.75  
1965 49.85  
2001 N41-02E 49.17

1991 49.75  
1965 49.85  
2001 N41-02E 49.17

1991 49.75  
1965 49.85  
2001 N41-02E 49.17

1991 49.75  
1965 49.85  
2001 N41-02E 49.17

1991 49.75  
1965 49.85  
2001 N41-02E 49.17

1991 49.75  
1965 49.85  
2001 N41-02E 49.17

1991 49.75  
1965 49.85  
2001 N41-02E 49.17

2001 S20-16E 52.4

2001 S7-57-12E 116.65  
S7-56-41E 116.65

1991 70.14  
2001 N86-10E 70.1

1965 66.46  
2001 N43-54-32E 74.74  
N44-10-31E 71.79  
N44-10-47E 71.79  
2001 N43-54-32E 74.74  
2001 N43-54-32E 74.74

1965 96.68  
2001 N41-46-34E 50.98  
1991 50.98  
2001 N41-46-34E 50.98  
1991 50.98  
2001 N41-46-34E 50.98  
1991 50.98

1991 70.93  
2001 S2-45-37E 70.94  
N2-45-48W 70.94

1991 70.93  
2001 S2-45-37E 70.94  
N2-45-48W 70.94

1991 70.93  
2001 S2-45-37E 70.94  
N2-45-48W 70.94

1991 70.93  
2001 S2-45-37E 70.94  
N2-45-48W 70.94

1991 70.93  
2001 S2-45-37E 70.94  
N2-45-48W 70.94

FD 1/2" REROD  
S37-33-06E  
2.96

FD 3/4X24  
REROD/CAP

1991 70.14  
2001 N86-10E 70.1

REC 1" PIPE  
LOCATION  
NEAR OPTIC FIBER  
SIGN

3/4X24 REROD 13'  
EAST OF EAST PVMT &  
14 SOUTH OF SOUTH PVMT EDGE

SET 3/4X24"  
REROD/CAP

WEIGHT LIMIT 3'  
SIGN

OBSERVATION SHEET #34 & 75  
1965 BATTERMAN VOL 4 PG 223  
1991 BARNES G-21, VOL 6 PG 412, & FB#3 PG 28  
2001 BARNES G-21(K)

WALLIN RD

E 1/4 COR  
SEC 11  
PORTER TWP  
T4N R11E

1991 70.93  
2001 S2-45-37E 70.94  
N2-45-48W 70.94

1991 70.93  
2001 S2-45-37E 70.94  
N2-45-48W 70.94

1991 70.93  
2001 S2-45-37E 70.94  
N2-45-48W 70.94

1991 70.93  
2001 S2-45-37E 70.94  
N2-45-48W 70.94

1991 70.93  
2001 S2-45-37E 70.94  
N2-45-48W 70.94

1991 70.93  
2001 S2-45-37E 70.94  
N2-45-48W 70.94

1991 70.93  
2001 S2-45-37E 70.94  
N2-45-48W 70.94

1991 70.93  
2001 S2-45-37E 70.94  
N2-45-48W 70.94

1991 70.93  
2001 S2-45-37E 70.94  
N2-45-48W 70.94