

U.S. PUBLIC LAND SURVEY MONUMENT RECORD

For Public Land Survey Corners in:

WI ADMINISTRATIVE CODE A-E 7.08 REQUIREMENT

T. 2 N., R. 11 E

CORNER CODE INDEX

A	1	2	3	4	5	6	7	8	9	10	11	12	13	14	15	16	17	18	19	20	21	22	23	24	25
B																									
C	6																								
D																									
E																									
F																									
G	1																								
H																									
J																									
K																									
L	18																								
M																									
N																									
O																									
P	19																								
Q																									
R																									
S																									
T	30																								
U																									
V																									
W																									
X	31																								
Y																									
Z																									

PLYMOUTH TWP

ROCK COUNTY WI

IF AVAILABLE
ROCK COUNTY COORDINATES REFERRED

North _____ Elev. _____

East _____

Hor. Datum _____ Vert. Datum _____

LATITUDE _____ ELLIPS. HT. _____

LONGITUDE _____

GPS (X) _____ TRAVERSE (X) _____

BASED ON THE FOLLOWING CONTROL:

PLACE MONUMENT SYMBOL AT PROPER LOCATION ON ABOVE INDEX

CORNER MONUMENT

WITNESS MONUMENT

(a)

BEARINGS ARE BASED ON:

FIELD BOOK _____ PAGE # _____

SHEET 1 OF 3

SHOW A PLAN VIEW DRAWING DEPICTING THE CORNER MONUMENT AND SURROUNDING PHYSICAL FEATURES, INCLUDING THE EXCAVATION AREA AND DEPTH.

PLANNING & ZONING COMMITTEE ADOPTED THE ABOVE FORM ON 12/2/1982

CORNER CODE P.25(2)

PL580

(B) Describe any record evidence, monument evidence, occupational evidence, testimonial evidence or any other material evidence you considered, and whether the monument was found or placed.

- 1833 MULLETT NORTH ON EAST SIDE SECTION 24
2620.2 STREAM 49.5' C SE
2640 SET QUARTER SECTION POST IN CREEK
3762 LEAVE MARSH
4158 LEAVE TIMBER AND ENTER MARSH
5280 SET POST CORNER SECTION 13 & 24 BUR OAK
8 S4W 132' BUR OAK 12 N42W 198' LAND
MOSTLY LEVEL WITH MARSH
- 1868 LOCKE PG 26 NORTH ON EAST LINE SEC 24 VAR 7-25
2640 SET TEMPORARY ¼ COR COR LOST.
4003.89 CENTER OF RR TRACK
5295.84 INTERSECTED NORTH BOUNDARY 7.26' EAST OF
COR. FOUND NORTH BT AND STUMP OF SOUTH BT
COR 0.66' NORTH OF COR POST TO FENCE
2647.92 SET PERMANENT ¼ COR 7.92' NORTH AND 3.63'
WEST OF TEMPORARY ¼ COR COR ABOUT 33' E AND
33' N OF CREEK SURROUND MONUMENT WITH
MOUND OF TUSSACKS VAR CORRECTED 7-30 AUG
25.1868
- 1883 LEE VOL 2 PG 365 FD STONES AND STAKE AT EAST SIDE OF
BASS CREEK.
- 1892 BLEEDORN VOL 2 PG 466 FD MON. SHOWS 2665.08 TO
CENTER OF SEC 24 PLYMOUTH TWP AND 2654.28 TO SE COR
OF SEC 24.
- 1895 TWP RD REC BK 2 PG 19 COMMENCING AT THE NORTH END
OF A HWY AT OR NEAR THE S.W. COR OF THE NW ¼ OF SEC 30
OF THE TOWN OF ROCK AND THE S.E. COR OF THE NE ¼ OF
SEC 25 OF THE TOWN OF PLYMOUTH; THENCE RUNNING NORTH
ABOUT 1 MILES TO THE ¼ POST OF SEC 24, OF THE TOWN OF
PLYMOUTH AND OF SEC 19 OF THE TOWN OF ROCK; THENCE AT
AN ANGLE OF 20 TO A PT 33' EAST OF THE LINE BETWEEN THE
SAID TOWNS, THENCE NORTH UPON SAID 33' EAST OF
PARALLEL WITH SAID TOWN LINE ABOUT 247.5'; THENCE WEST
AT AN ANGLE OF 20 DEGREES TO THE TOWN LINE BETWEEN
SAID TOWNS, THENCE NORTH UPON THE TOWN LINE BETWEEN
SAID TOWNS TO THE NE COR SEC 24 OF THE TOWN PLYMOUTH
AND THE NW COR OF SEC 19 OF THE TOWN OF ROCK TO
INTERSECT A HWY IN THE TOWN OF ROCK RUNNING EAST FROM
SAID PT OF TERMINATION, THE SAME BEING AN ACCURATE
SURVEY THEREOF CAUSED BY US TO BE MADE AND SAID HWY
BEING UPON THE TOWN LINE BETWEEN SAID TOWNS OR AS
NEAR TO AS THE SITUATION OF THE GROUND WILL ADMIT, THE
LINE OF SAID SURVEY IS THE CENTER OF SAID HWY AND THE
SAME IS LAID OUT OF THE WIDTH OF 66'.
- 1982 BARNES VOL 6 PG 282 SHOWS RECORD DISTANCES
- 1990 BARNES P-25 DUG & FD CUT LIMESTONE AT CENTER OF
PAVMT. STONE IS 5' DEEP 7' JUST BELOW OLD ROAD BED.
PLACED MAGNET BY L.S. BROKE TOP OF THE STONE OFF WITH
BACKHOE. THE STONE IS 5.16' EAST OF A LINE BETWEEN THE
SW & NW CORNERS OF SEC 19. REFERENCED SAME. ABOUT
81' NORTH OF NORTH END OF BRIDGE
- 1996 KREBS MAP #8905 ALUM. MON. NO-21-27W 2652.34 TO NE
COR SEC 24, SO-08-23E 2647.48 TO SE COR SEC 24, N88-29-
53W 2668.02 TO CEN SEC 24, & N88-29-53W 5331.22 TO W ¼
COR SEC 24,

SHEET 1 OF 3 CORNER CODE P-25(2)

Donald Barnes

6-11-04

PL580

2001 COMBS MAP #14241 CI N1-34-15W 2652.36 TO SE COR SEC 13.
2002 ERICKSON FED PRELIMINARY 227,563.20N/W;
2,202,700.996E/W NAD83. REDUCED TO COUNTY
246573.869N/S 464,477.701E/W S1-21-21E 2647.44 NAD83
TO SE COR SEC 24, N01-34-18W 2652.44 TO NE COR SEC 24,
2004 BARNES P-25(1) (MAY) FD BROKEN ALUM. MON. & REFERENCE
TIES. SET 4 MAG NAILS SO PROJECT ENGINEER COULD PLACE
ALUM MON. AT INTERSECTION OF STRING LINES. ACCEPTED
FD ALUM. MON., WHICH PERPETUATES CUT L.S.

FD ALUM MON IN CONCRETE @ INTERSECTION OF 4 MAG NAILS. FD
DOT REFERENCE MONUMENTS.


C) Was the corner restored through acceptance of (1) an obliterated evidence location, or, (2) a found
perpetuated location?

ACCEPTED FD ALUM. MON., WHICH PERPETUATES CUT L.S.

D) Describe any material discrepancy between the location of the corner as restored or reestablished
and the location of that corner as previously restored or reestablished by distance and direction. Show
the discrepancy on the plan view drawing under (a), above. Show the distances between the corner as
previously restored or reestablished and (1) the corner as restored or reestablished, and (2) to at least 4
of the witness monuments shown on the drawing in (a), above.

(E) Was the corner reestablished through lost corner proportionate methods? If so, show the method,
including the directions and distances to other public land survey corners used as evidence or used for
proportioning the corner location.

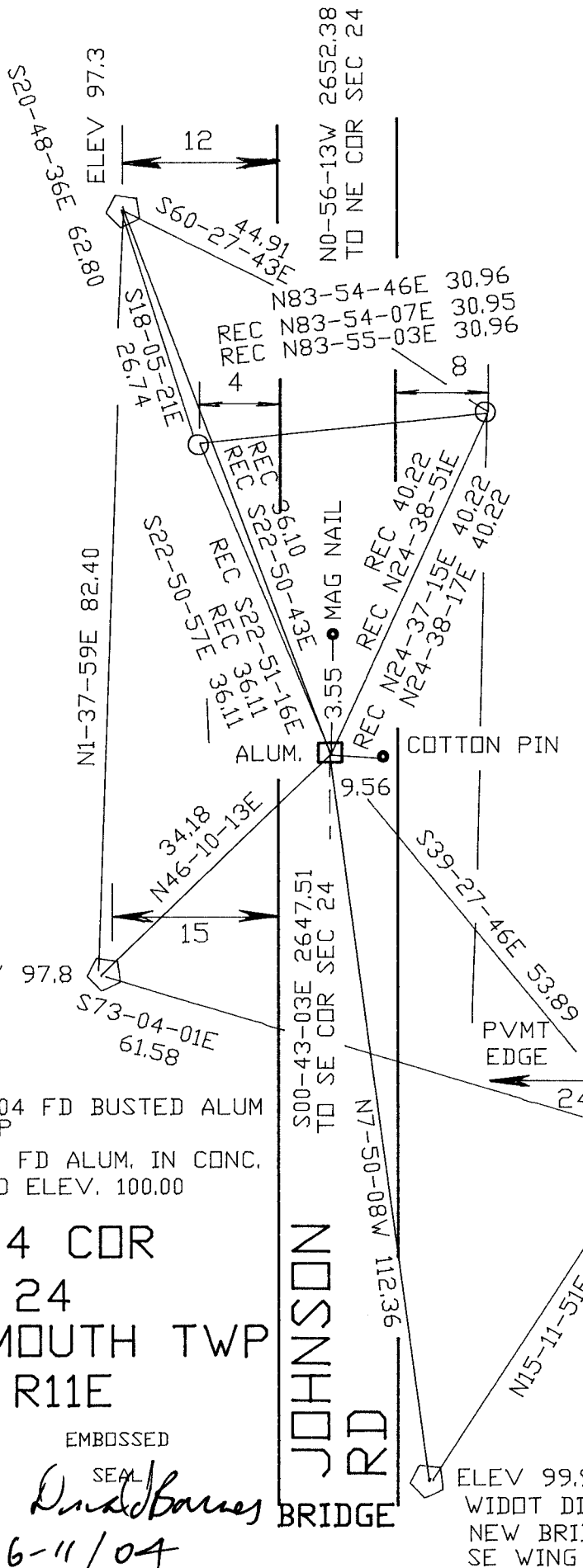
I, **Donald Barnes**, hereby certify that the corner location as identified by the corner code index
was determined by me under my direction and control and that this U.S. Public Land Survey
Monument Record is correct and complete to the best of my knowledge and belief.

Seal

Emboss
6-11-04

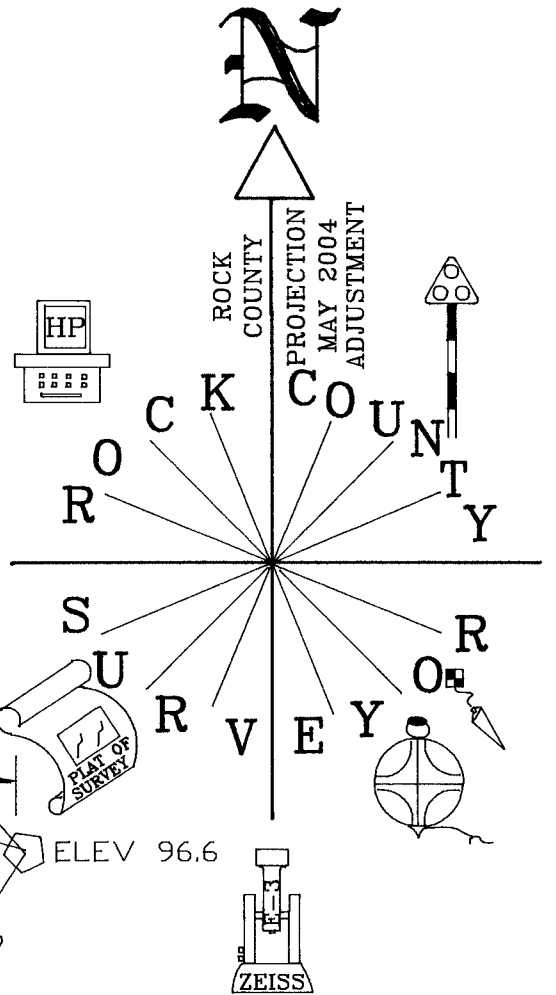
SHEET 2 OF 3

CORNER CODE **P-25(2)**

A.E. 7.08 REQUIREMENT



W 1/4 COR
 SEC 19
 ROCK TWP
 T2N R12E



5/12/2004 FD BUSTED ALUM
 1.1' DEEP
 6/02/04 FD ALUM. IN CONC.
 ASSUMED ELEV. 100.00

E 1/4 COR
 SEC 24
 PLYMOUTH TWP
 T2N R11E

EMBOSSED

SEAL

D. J. Barnes
 6-11/04

**JOHNSON
 RD
 BRIDGE**

ROCK TWP FB #3 PG 34
 OBSERVATION SHEETS
 70, 573, 579, 580 & 2581

○ 3/4X24" REROD/
 PLASTIC CAP

SHEET 3 OF 3

P-25(2)