

U.S. PUBLIC LAND SURVEY MONUMENT RECORD

For Public Land Survey Corners in:

WI ADMINISTRATIVE CODE A-E 7.08 REQUIREMENT

T. 2N., R. 11E

CORNER CODE INDEX

A	2	3	4	5	6	7	8	9	10	11	12	13	14	15	16	17	18	19	20	21	22	23	24	25
B																								
C	6																							
D		9																						
E																								
F	1	8																						
G																								
H																								
I																								
J																								
K																								
L	18	11																						
M																								
N																								
O																								
P	19	20																						
Q																								
R																								
S																								
T	30	29																						
U																								
V																								
W																								
X																								
Y																								
Z																								

PLYMOUTH TWP

ROCK COUNTY WI

IF AVAILABLE
ROCK COUNTY COORDINATES REFERRED

North _____ Elev. _____

East _____

Hor. Datum _____ Vert. Datum _____

LATITUDE _____ ELLIPS. HT. _____

LONGITUDE _____

GPS (X) _____ TRAVERSE (X) _____

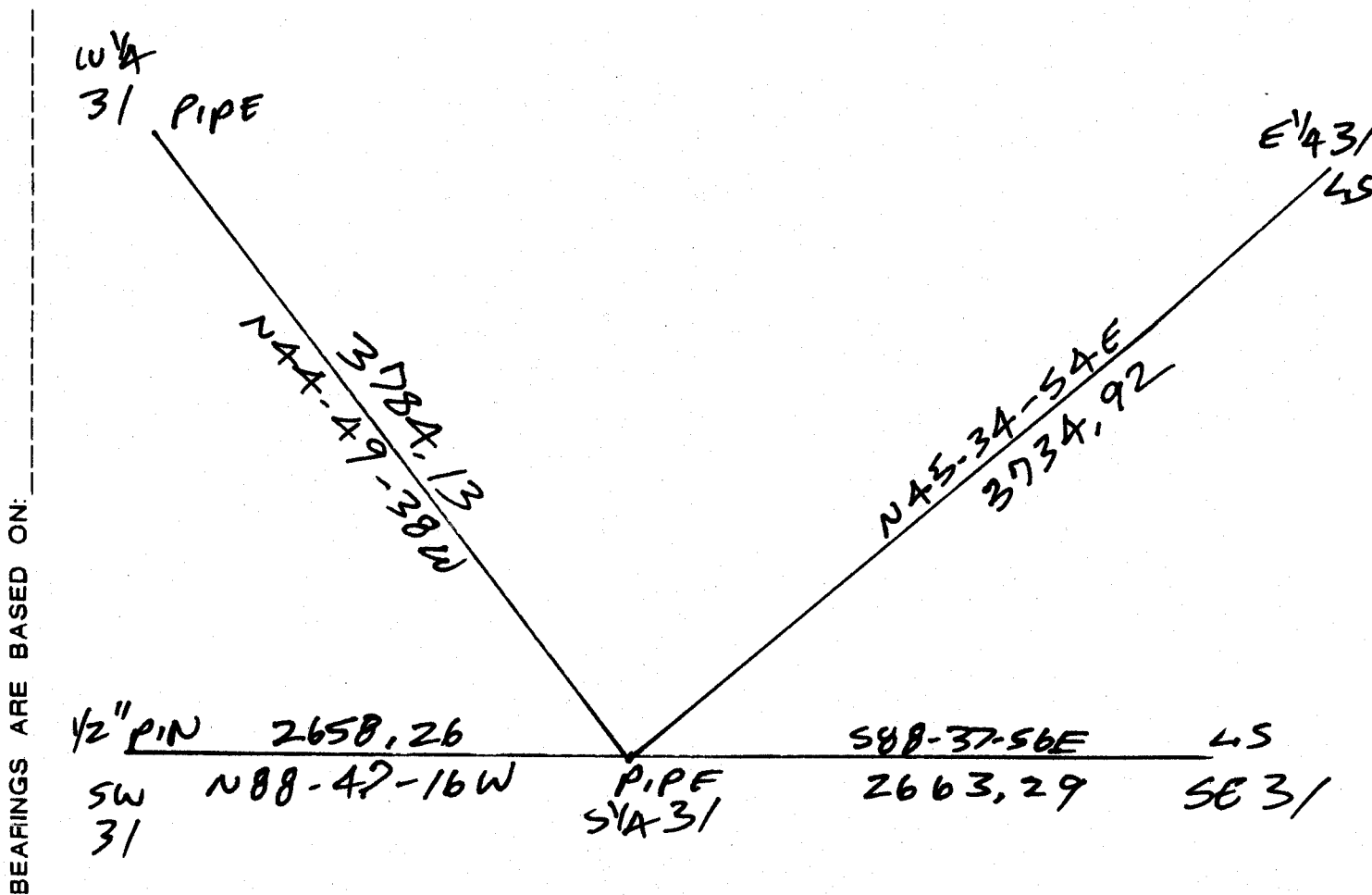
BASED ON THE FOLLOWING CONTROL:

PLACE MONUMENT SYMBOL \blacklozenge AT PROPER LOCATION ON ABOVE INDEX

\blacklozenge CORNER MONUMENT

\circ WITNESS MONUMENT

(a)



BEARINGS ARE BASED ON:

FIELD BOOK _____ PAGE # _____

SHEET 1 OF 1

SHOW A PLAN VIEW DRAWING DEPICTING THE CORNER MONUMENT AND SURROUNDING PHYSICAL FEATURES, INCLUDING THE EXCAVATION AREA AND DEPTH.

PLANNING & ZONING COMMITTEE ADOPTED THE ABOVE FORM ON 12/2/1982

CORNER CODE Z-3(2)

PL622

(B) Describe any record evidence, monument evidence, occupational evidence, testimonial evidence or any other material evidence you considered, and whether the monument was found or placed.

- 1833 MULLETT WEST ON SOUTH SIDE SECTION 31 (T2N R11E)
660 LEAVE PRAIRIE & ENTER WOODLAND
2640 SET QUARTER SECTION POST BUR OAK 14 N31E 116.16'; BUR
OAK 16 N42W 80.52'
5280 INTERSECTED RANGE LINE 264' SOUTH OF TEMPORARY POST
FOR CORNER TO TOWNSHIP 1 & 2 N RANGES 10 & 11E. BUR
OAK 14 S34E 15.84', BUR OAK 12 N82W 33', BUR OAK 12
S46W, BUR OAK 14 N68E. LAND ROLLING FIRST RATE BLACK
WHITE AND BUR OAK. SEPT 6TH, 1833.
1833 ORIG GOV. PLAT. 2640 TO NE & NW CORNERS OF SEC 6.
1868 LOCKE PLYMOUTH TWP REMONUMENTATION NOTES PG 73
SEP 14 1868 VAR 6 EAST ON SOUTH LINE SEC 31.
2657.82 INTERSECTED 1/4 LINE 13.53' NORTH OF COR. FOUND WEST
BT AND STUMP OF EAST BT COR IN CENTER OF HIGHWAY AND IN
LINE OF FENCE RUNNING SOUTH VAR CORRECTED 5-43.
CONTINUED EAST FROM 1/4 COR WITH VAR 6.
5320.92 INTERSECTED EAST BOUNDARY 22.11' NORTH OF COR.
VAR CORRECTED 5-31 1/4 MONUMENT MARKED 31 ON ITS
NORTH FACE.
PG 70 WEST ON SOUTH LINE SEC 32 VAR 6-20
0 SET OFF 12.87' SOUTH
406.89 CENTER OF BRIDGE OVER CREEK 7.92'
2640 SET TEMPORARY 1/4 COR. COR. LOST
5321.91 INTERSECTED WEST BOUNDARY 60.39' SOUTH OF COR.
FOUND OLD STAKE & WHERE B.T.S WERE DUG OUT. COR.
IN CENTER OF HIGHWAY RUNNING SOUTH & ON SOUTH
SIDE OF E & W HIGHWAY
2660.96 1/4 COR 20.96' WEST AND 36.63' NORTH OF
TEMPORARY 1/4 COR VAR CORRECTED (WHOLE LINE) 5-49
SEPT 11 1868
1871 COLLINS REMONUMENTATION NOTES NEWARK TWP PG 209
EAST ON NORTH LINE SEC 6 VARIATION 5-52
5283.96 SET STONE FOR CORNER OF 5 & 6 BY STUMP OF WITNESS
TREE. PLYMOUTH CORNER IS 30.36' WEST. BACK
2641.98 SET 1/4 STONE 13.2' W(?) OF PLYMOUTH CORNER. NOV
4TH 1871
1937 SUNNY VOL 3 PG 357 FD 6X6 STONE MON. SET 30" CAPPED PIPE
ON TOP. AT S 1/4 COR SEC 31 FD 6X6 STONE MON. SET 1 1/2"
CAPPED PIPE ON TOP. 13' APART.
1957 BATTERMAN JR. VOL 3 PG 521 2645.46 TO SEARCH AREA @ NE
COR SEC 6.
1957 BATTERMAN VOL 3 PG 522 2645.46 TO NE COR SEC 6. FD CAPPED
PIPE AT N 1/4 COR SEC 6 & S 1/4 COR SEC 31. REFERENCED
SAME. 13.12 BETWEEN CORNERS. 2645.46 TO NW COR SEC 6.
1995 LATHROP CSM18-105 CAPPED PIPE 2658.24 TO PIN @ SW COR SEC 31
1999 TALARCZYK MAP #8048 FD 6" SQUARE STONE. NO-43-53W 2649.06
TO GEN SEC 31 & NO-43-53W 5292.46 TO N 1/4 COR SEC 31
1999 TALARCZYK Z-3 FD PIPES SET BY SUNNY IN 1937. REFERENCED
SAME. PLYMOUTH COR IS 13.30 EAST OF NEWARK COR.
2001 BARNES Z-3(1) FD CAPPED PIPE @ CENTER OF PVMT. 13.11' WEST
OF PLYMOUTH COR. FD REFERENCE PIPES THAT TALARCZYK FOUND

C) Was the corner restored through acceptance of (1) an obliterated evidence location, or, (2) a found perpetuated location?

ACCEPTED FOUND CAPPED PIPE, WHICH PERPETUATED THE CUT L.S.

I, Donald Barnes, hereby certify that the corner location as identified by the corner code index was determined by me under my direction and control and that this U.S. Public Land Survey Monument Record is correct and complete to the best of my knowledge and belief.

seal



SHEET 1 OF 1
CORNER CODE Z-3(2)

3-07-03

A-E 7.08 REQUIREMENT