

U.S. PUBLIC LAND SURVEY MONUMENT RECORD

For Public Land Survey Corners In:

WI ADMINISTRATIVE CODE A-E 7.08 REQUIREMENT

T. 2 N. R. 11 E.

CORNER CODE INDEX

| | | | | | | | | | | | | | | | | | | | | | | | | | |
|---|----|---|---|---|---|---|---|---|----|----|----|----|----|----|----|----|----|----|----|----|----|----|----|----|---|
| 1 | 2 | 3 | 4 | 5 | 6 | 7 | 8 | 9 | 10 | 11 | 12 | 13 | 14 | 15 | 16 | 17 | 18 | 19 | 20 | 21 | 22 | 23 | 24 | 25 | |
| A | | | | | | | | | | | | | | | | | | | | | | | | | A |
| B | | | | | | | | | | | | | | | | | | | | | | | | | B |
| C | 6 | | | | | | | | | | | | | | | | | | | | | | | | C |
| D | | | | | | | | | | | | | | | | | | | | | | | | | D |
| E | | | | | | | | | | | | | | | | | | | | | | | | | E |
| F | | | | | | | | | | | | | | | | | | | | | | | | | F |
| G | 7 | | | | | | | | | | | | | | | | | | | | | | | | G |
| H | | | | | | | | | | | | | | | | | | | | | | | | | H |
| J | | | | | | | | | | | | | | | | | | | | | | | | | J |
| K | | | | | | | | | | | | | | | | | | | | | | | | | K |
| L | 18 | | | | | | | | | | | | | | | | | | | | | | | | L |
| M | | | | | | | | | | | | | | | | | | | | | | | | | M |
| N | | | | | | | | | | | | | | | | | | | | | | | | | N |
| O | | | | | | | | | | | | | | | | | | | | | | | | | O |
| P | 19 | | | | | | | | | | | | | | | | | | | | | | | | P |
| Q | | | | | | | | | | | | | | | | | | | | | | | | | Q |
| R | | | | | | | | | | | | | | | | | | | | | | | | | R |
| S | | | | | | | | | | | | | | | | | | | | | | | | | S |
| T | 30 | | | | | | | | | | | | | | | | | | | | | | | | T |
| U | | | | | | | | | | | | | | | | | | | | | | | | | U |
| V | | | | | | | | | | | | | | | | | | | | | | | | | V |
| W | | | | | | | | | | | | | | | | | | | | | | | | | W |
| X | 31 | | | | | | | | | | | | | | | | | | | | | | | | X |
| Y | | | | | | | | | | | | | | | | | | | | | | | | | Y |
| Z | | | | | | | | | | | | | | | | | | | | | | | | | Z |

PLYMOUTH TWP
ROCK COUNTY WI

IF AVAILABLE
ROCK COUNTY COORDINATES PREFERRED

North _____ Elev. _____

East _____

Hor. Datum _____ Vert. Datum _____

LATITUDE _____ ELLIPS. HT. _____

LONGITUDE _____

GPS (X) _____ TRAVERSE (X) _____

BASED ON THE FOLLOWING CONTROL:

PLACE MONUMENT SYMBOL AT PROPER LOCATION ON ABOVE INDEX

CORNER MONUMENT WITNESS MONUMENT

(a)

BEARINGS ARE BASED ON: _____

OBSERVATION sheets 516, 7112

FIELD BOOK _____ PAGE # _____ SHEET 1 OF 3

SHOW A PLAN VIEW DRAWING DEPICTING THE CORNER MONUMENT AND SURROUNDING PHYSICAL FEATURES, INCLUDING THE EXCAVATION AREA AND DEPTH.

PLANNING & ZONING COMMITTEE ADOPTED THE ABOVE FORM ON 12/2/1982

CORNER CODE C-9(2)

PI516

(B) Describe any record evidence, monument evidence, occupational evidence, testimonial evidence or any other material evidence you considered, and whether the monument was found or placed.

- 1833 HARRISON NORTH BET 4 & 5
2221.56 BROOK 11.88' CRS S.E
2640 QUARTER SEC CRS NEAR N. EDGE OF MARSH {BURR O
36 N21E 263' BURR O 34 N11W 396' BURR O 36 BURR
O 34} MARKED
2970 LEFT MARSH & ENTER ? & TIMBER
3234 LEFT TIMBER & ENTER PRAIRIE
5186.94 INT. N. BDY 39.6' E OF P. SET A POST & RAISED A
MOUND FOR COR SEC 4 & 5
- 1864 TWP RD REC BK 1 PG 48 COMMENCING AT THE HIGHWAY ON THE
LINE BETWEEN SEC 4 & 5 IN SAID TOWN RUNNING SOUTH TO THE
QUARTER POST BETWEEN SAID SEC THENCE EAST ON THE QUARTER
LINE UNTIL IT STRIKES THE БЕЛОИТ & MADISON RAILROAD; THENCE
SOUTH EASTERLY ON THE SOUTH SIDE AND CONTIGUOUS TO SAID
RAILROAD, ACROSS SAID SECTION FOUR.
- 1865 LOCKE VOL 1 PG 230 FOUND OLD STAKE SET POPLAR WITH L.S.
20X12X8 ON NORTH, L.S. 20X6X4 ON SOUTH AND SMALLER ONE
ON WEST IN MOUND.
- 1866 LOCKE VOL 1 PG 277 FOUND CORNER SET BY SELF (SEE SEC. 5)
USED TO SUBDIVIDE SECTION 4. 2665.74 TO CENTER OF SEC 4.
- 1867 TWP RD REC BK 1 PG 53 & 54 COMMENCING AT THE SE
COR OF SEC 8 AND RUNNING NORTH ON THE SECTION LINE
BETWEEN SECTIONS 8 AND 9 TO THE NE COR OF SEC 8 THENCE IN
A NORTHERLY DIRECTION TO A POINT 33' EAST OF THE SE COR OF
THE NE ¼ OF THE SE ¼ OF SEC 5; THENCE NORTH ON THE EAST
SIDE OF THE SECTION LINE BETWEEN SECTIONS 4 & 5 TO THE 1/4
POST ON SAID SECTION LINE, OR TO INTERSECT WITH ROAD
RUNNING SOUTH FROM FOOTVILLE. THE LINE OF SAID SURVEY TO
BE THE CENTER OF SAID HIGHWAY, AND THE SAME IS ESTABLISHED
66' IN WIDTH
- 1867 LOCKE VOL 1 PG 280 FOUND CORNER AS SET BY SELF SECTION 4
USED TO SUBDIVIDE SECTION 5. 2664.42 TO CENTER OF SEC 5
& 2597.1 TO SE COR OF SEC 5.
- 1868 LOCKE VOL 1 PG 317 FOUND CORNER AS SET BY SELF USED TO
SUBDIVIDE SEC 4.
- 1868 LOCKE REMONUMENTATION FIELD NOTES
PG 51 NORTH BETWEEN SECS 4 & 5 VAR 7-05
1324.62 COR. POST OF FENCE ON SOD FENCE
1864.5 SOUTH BANK BASS CREEK
1881 NORTH BANK BASS CREEK
2601.06 INTERSECTED ¼ LINE AT COR. FOUND COR AS SET
BY SELF. (SEE CO. SURVEYORS RECORD) 1 FT EAST
OF N AND S FENCE AND 5.94' SOUTH OF E AND W
FENCE.
2984.52 CENTER SLUICE BRIDGE 2.64' WIDE
3523.08 CENTER MAIN TRACK OF RR
4012.8 CENTER OF BRIDGE 6.6' WIDE
5158.89 INTERSECTED NORTH BOUNDARY 7.26' WEST OF
COR VAR CORRECTED 6-56 SEPT 4 1868
- 1913 OWEN VOL 6 PG 386 CALLS FOR THE FOLLOWING:
2667.7 TO CENTER OF SEC 5
2671.3 TO CENTER OF SEC 4
87-52 ANGLE FROM CENTER OF 5 TO THE NE CORNER OF SEC
5.
- 1913 OWEN MAP #6306 COR STONE. S89-59E 2671.3 TO STONE AT
CENTER SEC 4, N87-38W 2667.7 TO CENTER SEC 5, N0-14E 2559.7
TO STONE AT NE COR SEC 5.
- 1921 ELY MAP #6335 STONE. N87-38W 2667.7 TO CENTER SEC 5, N0-
14E 2559.7 TO NE COR SEC 5, S89-59E 2671.3 TO STONE CENTER
SEC 4, & ANGLE 89-42 @ NE COR SEC 5 FROM E ¼ COR SEC 5 TO
N ¼ COR SEC 5.
- 1965 LEE SUB MAP #2252 LOT 58 & 59 ASSESSORS PLAT. TIE INTO
COR.

Donald Barnes

1/31/03

PL 516

- 1966 BATTERMAN JR. VOL 4 PG 255 SHOWS STONE IN MONUMENT BOX & SHOWS THE FOLLOWING:
2558.26 TO NE COR SEC 5
2668.7 TO CENTER OF SEC 5
88-13-45 ANGLE FROM CENTER OF SECTION 5 TO THE NE COR OF SEC 5.
- 1966 THOM MAP #7567 CUT L.S. N88-13-45W 2668.69 TO CENTER SEC 5 & N0-13-15W 2558.26 TO NE COR SEC 5.
- 1968 BATTERMAN PLAT BK 24 PG 5 "ASSESSOR'S PLAT 2 OF THE VILLAGE OF FOOTVILLE" FD CUT STONE IN MON. BOX. ANGLE 90-03 @ W 1/4 COR SEC 4 FROM WEST LINE TO E/W 1/4 LINE SEC 4.
- 1970 COMBS SUB MAP #2255 USED BUT STATED NOTHING ABOUT MON.
1972 LEE MAP #4322 FD MON. BOX
1977 COMBS SUB MAP #12067 USED BUT STATED NOTHING ABOUT MON.
- 1986 LEE SUB MAP #12840 FD C.1
1988 LEE CSM13-216 FD CUT L.S. 2601.31 TO SW COR SEC 4 A PIPE LEE SET.
- 1988 BARNES VOL 6 PG 386 SHOWS SURVEYS OF RECORD.
1991 BARNES C-9 FOUND CUT L.S. IN ROUND MON. BOX & REFERENCED SAME.
- 1995 KREBS CSM VOL 18 PG 209 CUT STONE IN BOX 2558.56 TO ALUM @ NE COR SEC 5.
- 1996 KREBS MAP #8885 FD CUT STONE MON.
1997 COMBS SUB MAP #6616 STONE MON. 2558.48 TO NE COR SEC 5
1997 FINCO VOL 20 PG 34 CUT STONE 2601.31 TO ALUM MON @ SW COR SEC 4.
- 1998 HOULE VOL 22 PG 62 STONE IN MON BOX 2558.55 TO ALUM MON @ NE COR SEC 5
- 19?? RHB SUB MAP#1260 STATES NOTHING ABOUT MON.
- 1999 KREBS MAP #7568 FD CUT STONE IN BOX. S0-56-08E 2601.26 TO SE COR SEC 5, N046-58W 2558.53 TO NE COR SEC 5, N88-46-24W 2669.00 TO CENTER SEC 5, 5340.08 TO W 1/4 COR SEC 5. BEARINGS BASED ON STATE PLANE COORDINATES FROM GPS ORFORDVILLE GPS & ITS REFERENCE (N14-14-23E)
- 2000 LEUENBERGER VOL 23 PG 262 CUT STONE 2601.29 TO ALUM. MON. AT SE COR SEC 5
- 2000 HOULE VOL 23 PG 357 STONE IN BOX 2558.55 TO ALUM AT NE COR SEC 5.
- 2000 FINCO CSM VOL 20 PG 34 (WPL) FD CUT L.S. 2601.31 TO SW COR SEC 4 A ALUM
- 2001 BARNES C-9(1) FOUND CUT L.S. IN ROUND MON. BOX. MONUMENT WILL BE DESTROYED BY SEWER PROJECT. REFERENCED SAME.
- 2001 LEUENBERGER VOL 24 PG 76 STONE 2558.55 TO ALUM AT NE COR SEC 5
- 2001 STOCKING SUB BK 32 PG 529 FD B.C.A.M.{?} 2671.53 TO CENTER SEC 4
- 2002 RHL SUB MAP #10281 "FAIRWAY ESTATES PRELIM"

AFTER THE SEWAGE TREATMENT PLANT WAS BUILT, I THE FOUND CUT LIMESTONE IN A ROUND MON. BOX.

C) Was the corner restored through acceptance of (1) an obliterated evidence location, or, (2) a found perpetuated location?

ACCEPTED FOUND CUT LIMESTONE IN ROUND MON. BOX. REFERENCED MON.

I, **Donald Barnes**, hereby certify that the corner location as identified by the corner code index was determined by me under my direction and control and that this U.S. Public Land Survey Monument Record is correct and complete to the best of my knowledge and belief.

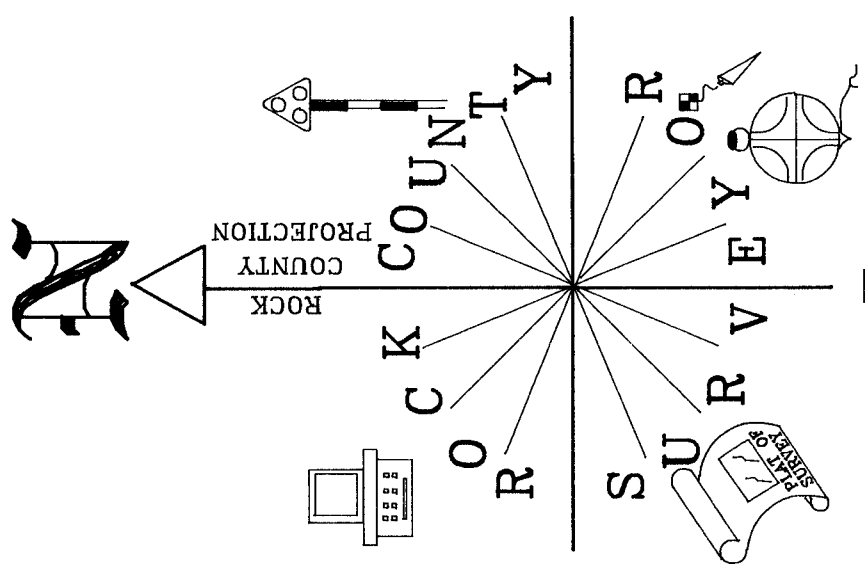
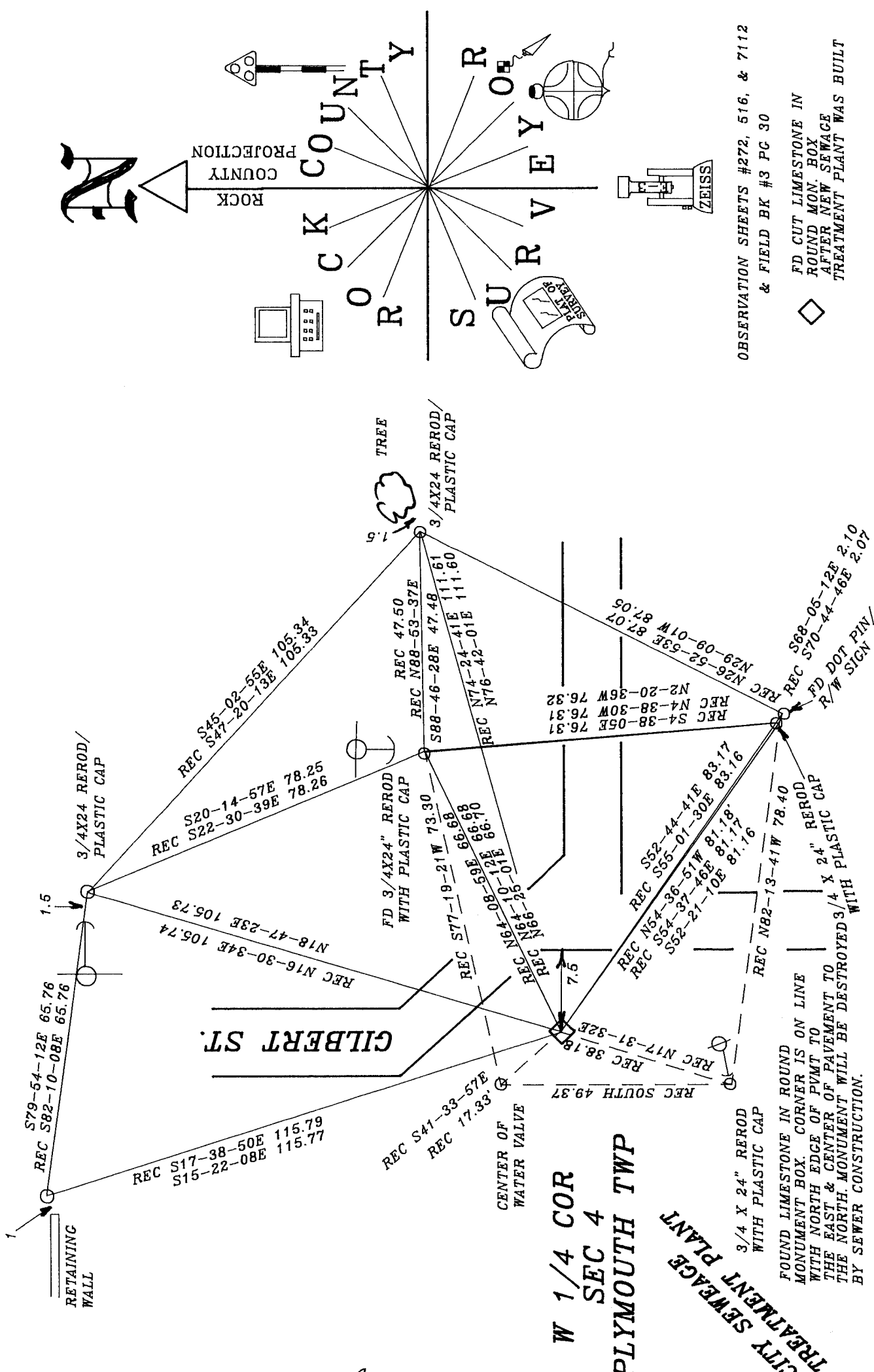
Seal
Donald Barnes
Emboss

SHEET 2 OF 3

11/31/03

A-E 7.08 REQUIREMENT

CORNER CODE **C-9(2)**



OBSERVATION SHEETS #272, 516, & 7112
& FIELD BK #3 PC 30

◇ FD CUT LIMESTONE IN ROUND MON. BOX AFTER NEW SEWAGE TREATMENT PLANT WAS BUILT

Donald Barnes
EMBOSSSED SEAL

01/31/03

SHEET 3 OF 3

C-9(2)