

# U.S. PUBLIC LAND SURVEY MONUMENT RECORD

For Public Land Survey Corners In:

WI ADMINISTRATIVE CODE A-E 7.08 REQUIREMENT

T. 2 N. R. 11 E.

CORNER CODE INDEX

1	2	3	4	5	6	7	8	9	10	11	12	13	14	15	16	17	18	19	20	21	22	23	24	25	
A																									A
B																									B
C																									C
D																									D
E																									E
F																									F
G																									G
H																									H
I																									I
J																									J
K																									K
L																									L
M																									M
N																									N
O																									O
P																									P
Q																									Q
R																									R
S																									S
T																									T
U																									U
V																									V
W																									W
X																									X
Y																									Y
Z																									Z

PLYMOUTH TWP  
ROCK COUNTY WI

IF AVAILABLE  
ROCK COUNTY COORDINATES PREFERRED

North \_\_\_\_\_ Elev. \_\_\_\_\_

East \_\_\_\_\_

Hor. Datum \_\_\_\_\_ Vert. Datum \_\_\_\_\_

LATITUDE \_\_\_\_\_ ELLIPS. HT. \_\_\_\_\_

LONGITUDE \_\_\_\_\_

GPS (X) \_\_\_\_\_ TRAVERSE (X) \_\_\_\_\_

BASED ON THE FOLLOWING CONTROL:  
\_\_\_\_\_

1 2 3 4 5 6 7 8 9 10 11 12 13 14 15 16 17 18 19 20 21 22 23 24 25  
PLACE MONUMENT SYMBOL  AT PROPER  
LOCATION ON ABOVE INDEX

CORNER MONUMENT

WITNESS MONUMENT

(a)

BEARINGS ARE BASED ON: \_\_\_\_\_

FIELD BOOK \_\_\_\_\_ PAGE # \_\_\_\_\_

SHEET 1 OF 3

SHOW A PLAN VIEW DRAWING DEPICTING THE CORNER MONUMENT AND SURROUNDING  
PHYSICAL FEATURES, INCLUDING THE EXCAVATION AREA AND DEPTH.

PLANNING & ZONING COMMITTEE ADOPTED THE ABOVE FORM ON 12/2/1982

CORNER CODE G-21(1)

PL539

(B) Describe any record evidence, monument evidence, occupational evidence, testimonial evidence or any other material evidence you considered, and whether the monument was found or placed.

1833 HARRISON NORTH BETWEEN SECS 11 & 12

546.48 BLACK O. 18

762.96 BURR O. 14

2640 QUARTER SEC COR. {BURR O 24 N39W 17.16'  
BURR O 6 S44E 22.44' BURR O 24 BURR O 6}  
MARKED

4686 LEFT TIMBER & ENTER MARSH

5148 LEFT MARSH

5280 COR TO SECS 1,2,11,12 {BURR O 6 N7E 61.38',  
BURR O 10 N26W 79.86', BURR O 24 S87W  
139.92'

LAND LEVEL 2<sup>ND</sup> RATE WITH BURR O TIMBER ??

1843 STEBINS TWP RD REC BK 1 PG 1 (BUTLER RD) SURVEY OF RD  
IN THE TWP OF CENTER. BEGINNING AT THE 1/4 POST ON THE  
EAST SIDE OF SEC 12, T2N R11E; THENCE WEST 5388.24' TO  
1/4 POST ON WEST SIDE OF SEC 12; THENCE NORTH 2640 TO  
THE NW COR OF SEC 12 OF SAID TOWN AND RANGE AND THE  
WHOLE LENGTH OF THE ROAD 1 1/2 MILES 108.24'. COURSE  
GIVEN ACCORDING TO THE TRUE MERIDIAN. VARIATION OF  
THE NEEDLE 7 1/2

1846 TWP RD REC BK 1 PG 14 BEGINNING AT THE 1/4 POST ON  
WEST SIDE OF SEC 12 T2N R11E AND RUNNING NORTH 2640  
ON THE WEST SIDE OF SAID SEC 12; THENCE NORTH 5240.4'  
ON THE WEST SIDE OF SEC 1 IN SAME TOWN AND RANGE;  
THENCE NORTH 5280 ON THE WEST SIDE OF SEC 36, T3N OF  
RANGE 11 EAST. SAID RD IS 66' IN WIDTH. VARIATION OF  
NEEDLE 8 E.

1855 CHURCH VOL 1 PG 34 SHOWS DISTANCES TO CORNER BUT  
STATES NOTHING ABOUT CORNER.

1857 TWP RD REC BK 1 PG 37 HWY BE LAID OUT IN SAID TOWN OF  
THE WIDTH 66 AND HAVE CAUSED A SURVEY MADE AS  
FOLLOWS: THE CENTER LINE OF SAID HWY IS TO COMMENCE  
AT THE SE COR OF THE N 1/2 OF THE SW 1/4 OF SEC 11 IN SAID  
TOWN THENCE RUNNING EAST TO THE SE COR OF THE N 1/2  
OF THE SE 1/4 OF SAID SEC 11 THENCE NORTH TO THE 1/4  
POST ON THE EAST SIDE OF SAID SEC 11.

1864 LOCKE VOL 1 PG 218 & MAP #4342 FOUND BTS & HH SET  
ON CORNER

1865 LOCKE VOL 1 PG 240 STATES SEE SECTION 12

1868 LOCKE REMONUMENTATION INSTALLED A CUT LIMESTONE.

PG 39 SOUTH BETWEEN SECS 11 & 12 VAR 5-25

380.82 CENTER OF SLUICE BRIDGE

2650.56 INTERSECTED 1/4 LINE AT COR. FOUND B.T.S AND  
STONE ON COR. SET BY SELF.

CONTINUED SOUTH WITH VAR 8-15

5301.78 INTERSECTED SOUTH BOUNDARY 16.5' EAST OF  
COR. VAR CORRECTED 7-54 AUG 28, 1868

1869 LEE VOL 2 PG 1 FOUND MONUMENT

1876 RUBER VOL 2 PG 205 FOUND STONE MONUMENT.

1982 BARNES VOL 6 PG 282 SHOWS RECORD DISTANCES.

1988 BARNES B-21 DUG & FD ABOUT 12" DEEP A CUT L.S. I  
BROKE ABOUT THE TOP 0.2' OFF. THE STONE IS ALSO SPLIT  
LENGTH WISE. PLACED 1"X24" IRON PIPES HORIZONTALLY  
ON EAST & WEST SIDES OF STONE. PLACED POLY. MON. ON  
TOP OF STONE. THE MON. IS ABOUT 1' SOUTH OF THE  
CENTER OF PVMT. PROJECTED FROM THE EAST & 4' EAST OF  
THE WEST EDGE OF THE PVMT. REFERENCED SAME.

SHEET 1 OF 3 CORNER CODE G-21(1)

Ronald Barnes

12-30-02

PL539

1988 BARNES VOL 6 PG 379 NB9-56-29E 1379.89 TO 1/16<sup>TH</sup> COR,  
2760.26 TO CEN SEC 12, & 5366.65 TO E 1/4 COR SEC 12.  
SOLAR OBSERVATION TO ESTABLISH TRUE NORTH  
1988 BARNES VOL 6 PG 389 2650.12 TO NE COR SEC 11  
1993 COMBS MAP #10157 FD ALUM. 2759.96 TO CEN SEC 12  
1997 COMBS CSM VOL 20 PG 335 2649.89 TO SW COR SEC 12  
L.S.  
1996 COMBS CSM VOL 19 PG 367  
1998 COMBS MAP #8257 FD ALUM  
2001 COMBS CSM VOL 25 PG 7 FD ALUM. 2649.89 TO SW COR  
SEC 12.

FD POLY. MON. & TIES

*C) Was the corner restored through acceptance of (1) an obliterated evidence location, or, (2) a found perpetuated location?*

ACCEPTED FD POLY. MON ON TOP OF L.S.

*D) Describe any material discrepancy between the location of the corner as restored or reestablished and the location of that corner as previously restored or reestablished by distance and direction. Show the discrepancy on the plan view drawing under (a), above. Show the distances between the corner as previously restored or reestablished and (1) the corner as restored or reestablished, and (2) to at least 4 of the witness monuments shown on the drawing in (a), above.*

I, Donald Barnes, hereby certify that the corner location as identified by the corner code index was determined by me under my direction and control and that this U.S. Public Land Survey Monument Record is correct and complete to the best of my knowledge and belief.

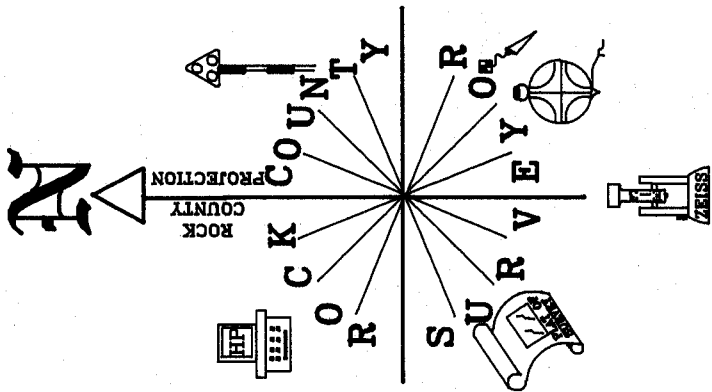
Seal  
*Donald Barnes*

SHEET 2 OF 3

Emboss

12-30-02

CORNER CODE **G-21(1)**  
A-E 7.08 REQUIREMENT



RED/WHITE ANT.  
N1-16-07W 12,979

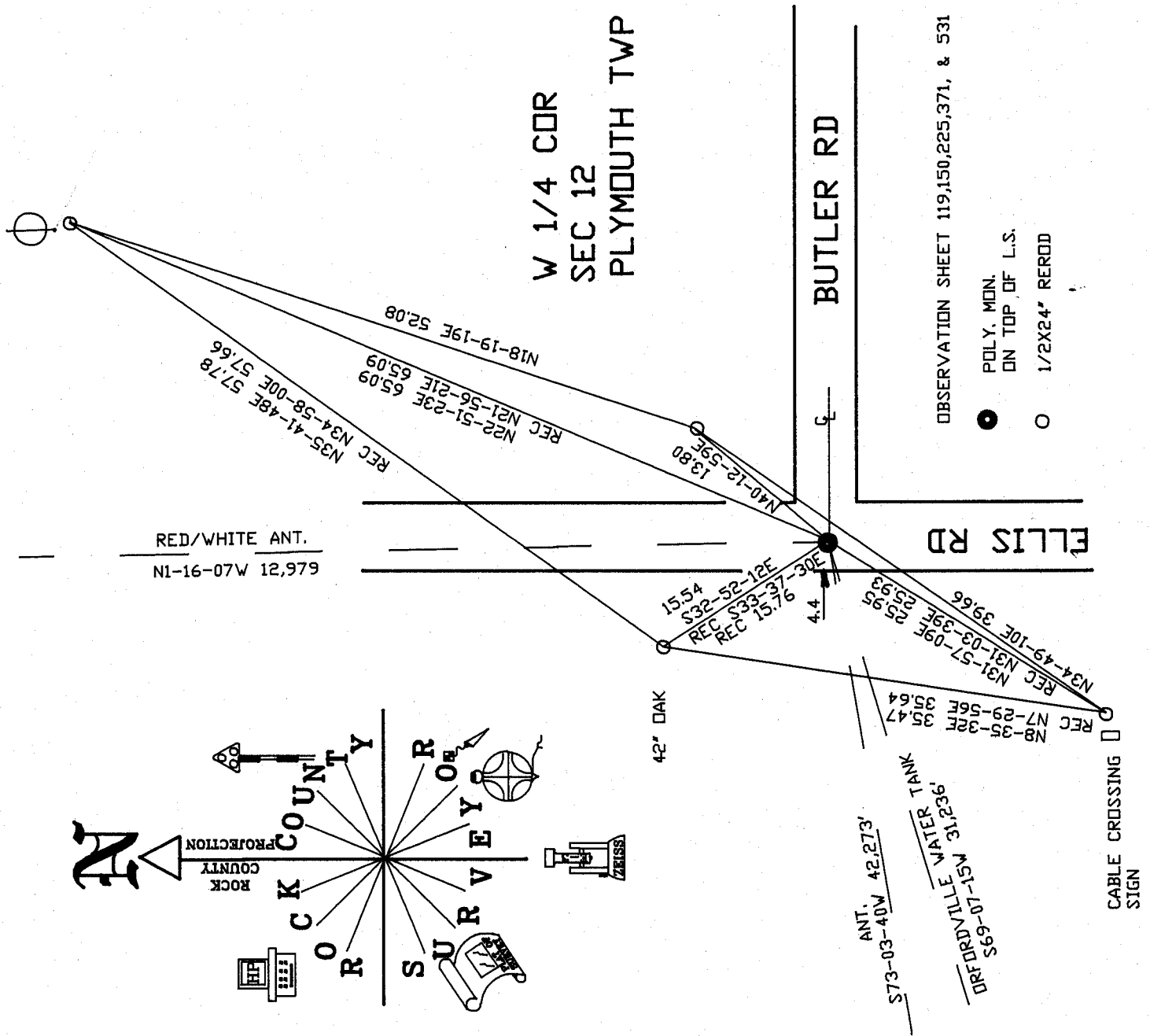
W 1/4 COR  
SEC 12  
PLYMOUTH TWP

BUTLER RD

ELLIS RD

OBSERVATION SHEET 119,150,225,371, & 531

- POLY. MON. ON TOP OF L.S.
- 1/2X24" REROD



*Dennis Boones*  
EMBOSSED SEAL

SHEET 3 OF 3

G-21(1)

12-30-02