

U.S. PUBLIC LAND SURVEY MONUMENT RECORD

For Public Land Survey Corners in:

WI ADMINISTRATIVE CODE A-E 7.08 REQUIREMENT

T. 2 N., R. 11 E

CORNER CODE INDEX

A	2	3	4	5	6	7	8	9	10	11	12	13	14	15	16	17	18	19	20	21	22	23	24	25
B																								
C	6					5				A				3						2			1	
D																								
E																								
F																								
G	7					8				9				10						11			12	
H																								
I																								
J																								
K																								
L	18					17				16				15						14			13	
M																								
N																								
O																								
P	19					20				21				22						23			24	
Q																								
R																								
S	30					29				28				27						26			25	
T																								
U																								
V																								
W																								
X	31					32				33				34						35			36	
Y																								
Z																								

PLYMOUTH TWP
ROCK COUNTY WI

IF AVAILABLE
ROCK COUNTY COORDINATES PREFERRED

North _____ Elev. _____

East _____

Hor. Datum _____ Vert. Datum _____

LATITUDE _____ ELLIPS. HT. _____

LONGITUDE _____

GPS (X) _____ TRAVERSE (X) _____

BASED ON THE FOLLOWING CONTROL:

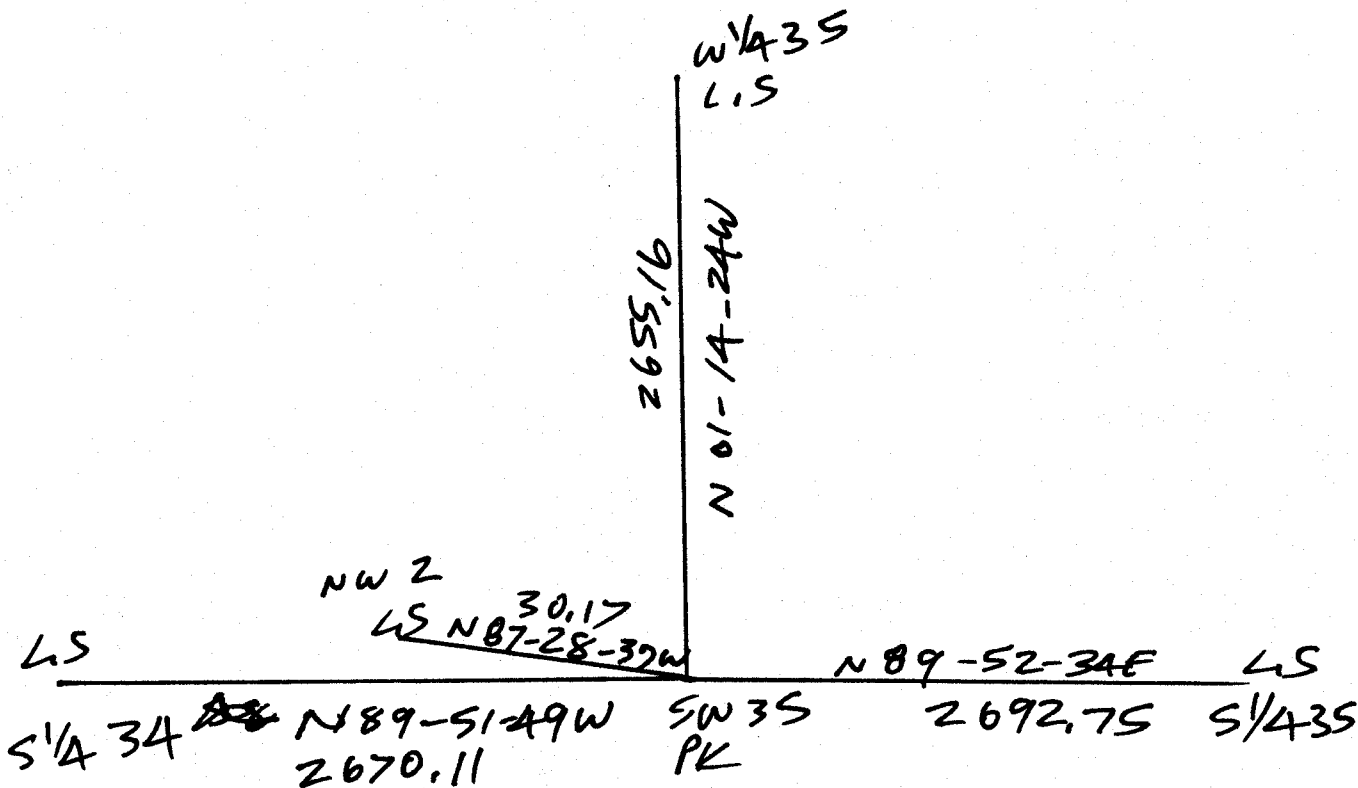
PLACE MONUMENT SYMBOL  AT PROPER LOCATION ON ABOVE INDEX

 CORNER MONUMENT

 WITNESS MONUMENT

(a)

BEARINGS ARE BASED ON:



OBSERVATION SHEETS 69, 393, 629

FIELD BOOK _____ PAGE # _____

SHEET 1 OF 2

SHOW A PLAN VIEW DRAWING DEPICTING THE CORNER MONUMENT AND SURROUNDING PHYSICAL FEATURES, INCLUDING THE EXCAVATION AREA AND DEPTH.

PLANNING & ZONING COMMITTEE ADOPTED THE ABOVE FORM ON 12/2/1982

CORNER CODE Z-17(2)

PL629

(B) Describe any record evidence, monument evidence, occupational evidence, testimonial evidence or any other material evidence you considered, and whether the monument was found or placed.

- 1833 MULLETT WEST ON SOUTH SIDE SECTION 35
1387.32 WHITE OAK 10 IN DIAMETER
2640 SET QUARTER SECTION POST WHITE OAK 18 N69E
14.52'; WHITE OAK 14 N78W 23.76'
5280 SET POST CORNER SECTION 34 & 35 WHITE OAK 20 N62E
33'; WHITE OAK 3 N62W 24.42'
WEST ON SOUTH SIDE SECTION 34
2640 SET QUARTER SECTION POST WHITE OAK 16 N29E
155.76' BUR OAK; BUR OAK 12 N60 1/2W 167.64';
3960 ENTER PRAIRIE
5280 SET POST CORNER SECTIONS 33 & 34 MADE A MOUND
OF STONES 3 FEET IN DIAMETER AT BASE & 3 FEET HIGH
FIRST 3/4 THINLY TIMBERED WITH BLACK WHITE AND BUR
OAK THICK UNDERGROWTH HAZEL BRIERS GRAPE VINES
& LAST 1/4 RICH DRY PRAIRIE.
- 1833 HARRISON NORTH BET 34 & 35
2640 QUARTER SEC COR. BLK O 14 S57W 33'; W.O. 13 N26W
33'; BLK O 14 & W.O. 13 MARKED
4835.16 BUR O 13
5280 COR TO SECS 26,27,34,&35 W.O. 14 S16W 38.94'; BUR OAK
11 S71E 132; BUR OAK 36 N78E 170.94'; BURR OAK 14
N70W 86.46'
- 1834 MILLER NORTH BET 2 & 3 T1N R11E
2640 SET 1/4 SEC POST BUR OAK 12 S47E 274.56' , BUR OAK
12 N9E 4.03'
3960 LEAVE PRAIRIE
5326.2 INTERSECTED NORTH BOUNDARY 31.02 WEST OF POST.
SET POST COR OF 2 & 3. BUR OAK 12 IN S45E 85.8',
WHITE OAK 20 S80W 64.68' LAND GENTLY ROLLING 2ND
RATE. MARCH 9, 1834
- 1868 LOCKE PLYMOUTH TWP REMONUMENTATION
PG 16 WEST ON SOUTH LINE SEC 34 VAR 6
264 SET OFF 3.3' SOUTH
528 SET OFF 6.6' SOUTH
792 SET OFF 1.32' SOUTH
1518 SET OFF 1.65' SOUTH
2673 INTERSECTED 1/4 LINE 14.52' SOUTH OF COR. FOUND
BTS AND OLD STAKE. VAR CORRECTED 5-58.
CONTINUED WEST FROM 1/4 COR WITH VAR 6-22
3762 ENTER PRAIRIE
5339.4 INTERSECTED WEST BOUNDARY 30.36' SOUTH OF COR.
FOUND LARGE LIMESTONE SET FOR CORNER. COR IN CENTER
HIGHWAYS RUNNING N, E & W SET MONUMENT IN MOUND OF
STONES COVERED WITH EARTH. VAR CORRECTED 5-43 1/4
MONUMENT MARKED 34 ON NORTH FACE.
PG 15 EAST ON SOUTH LINE OF SEC 35 VAR 5-30
330 SET OFF 15.18' NORTH
1716 SET OFF 6.27' NORTH
1452 SET OFF 4.29' NORTH
1848 SET OFF 46.86 NORTH
2696.1 INTERSECTED 1/4 LINE 52.8' NORTH OF COR. FOUND
STUMP OF EAST BT AND WHERE WEST BT WAS DUG OUT
AND OLD STAKE. COR. 3 FT NORTH OF E & W FENCE AND
3 FT WEST OF N & S FENCE VAR CORRECTED 5-56
CONTINUED EAST FROM 1/4 COR WITH VAR 5-50
5346 INTERSECTED EAST BOUNDARY 3.63' SOUTH OF COR.
VAR CORRECTED 5-55 1/4 MONUMENT MARKED WITH
FIGURE 35 ON NORTH FACE.
PG 14 SOUTH BETWEEN SEC 34 AND 35 VAR 6-55
2650.56 INTERSECTED 1/4 LINE AT COR. FOUND NORTH BT AND
STUMP OF SOUTH BT AND OLD STAKE. COR IN CENTER
OF HIGHWAY.

SHEET 1 OF 2 Z-17(2)

Donald Barnes
03-07-03

- 4092 SET OFF 15.51' EAST
 4290 SET OFF 9.9' EAST
 4488 SET OFF 12.21' WEST
 4752 SET OFF 14.52' EAST
 5016 SET OFF 16.5' EAST
 5148 SET OFF 19.8' WEST
 5307.72 INTERSECTED SOUTH BOUNDARY 5.28' WEST OF COR.
 FOUND EAST BT AND STUMP OF WEST BT AND OLD STAKE.
 VAR CORRECTED 7-08 1/2 AUG 20, 1868
 1871 COLLINS REMONUMENTATION PG 159 NEWARK TWP T1N R11E
 NORTH BETWEEN 2 & 3 VARIATION 6
 2654.52 INTERSECT 1/4 LINE 7.26' EAST OF CORNER. SET 14
 STONE IN CENTER OF HIGHWAY IN LINE WITH FENCE
 EAST. CORRECTED VARIATION 5-50
 CONTINUED NORTH VARIATION 6
 5497.14 INTERSECT TOWN LINE 38.28' EAST OF CORNER. SET
 STONE FOR CORNER OF 2 & 3 BY STUMPS OF WITNESS
 TREES. CORNER OF 34 & 35 T2N R11 IS 31.02 EAST.
 CORRECTED VARIATION 5-10
 PG 160 EAST ON NORTH LINE OF 2 VARIATION 6-16
 5454.24 SEC CORNER
 BACK TO
 2727.12 SET 1/4 STONE 1.98' EAST OF PLYMOUTH CORNER. OCT
 21 1871
 PG 173 EAST ON NORTH LINE OF SEC 3 VARIATION 5-50
 5280 SECTION CORNER
 BACK TO
 2640 SET 1/4 STONE 1.98' EAST OF PLYMOUTH COR. OCT 26 1871
 1873 RUGER VOL 2 PG 114 STONE MON. VAR 6-21 2650.23 SE SEC 34
 TO E 1/4 COR SEC 34 & 2667.06' VAR 5-15 FROM SE TO S 1/4 COR
 SEC 34.
 1873 RUGER VOL 2 PG 116 STONE MON. VAR 6-21 2650.23 SW TO W 1/4
 COR SEC 35 & 2684.88 VAR 5-27 SW TO S 1/4 COR SEC 35.
 1873 RUGER VOL 2 PG 117 CALLS FOR STONE MON. 31.02' WEST OF
 STONE MON AT SE COR SEC 34.
 1882 HOLMES VOL 2 PG 349 COR MON SOUTH 1440.71 TO 1/16TH COR
 & 2832.72 TO E 1/4 COR SEC 3.
 1967 BATTERMAN VOL 4 PG 337 @ SE COR SEC 34 FD CUT L.S.
 4X6X24' 4' DEEP. REFERENCED SAME.
 1986 BARNES VOL 6-358 30.17 NE COR SEC 3 TO SE COR SEC 34,
 2738.99 TO E 1/4 COR SEC 3
 1986 BARNES A-17 & Z-17 ESTABLISHED REFERENCE TIES. AT NW COR
 SEC 2 FOUND L.S. 3' DEEP PLACED POLY MON. ON TOP & PLACED
 CARSONITE NEXT TO MON. AT SE COR SEC 34 FD PK & REFERENCE TIES.
 1989 COMBS #12293 S89-42W TO S 1/4 COR SEC 34, N1-39W TO E 1/4 COR
 SEC 34, & 30.2' EAST OF NE COR SEC 3 NEWARK TWP
 1991 BARNES Z-17 FD PK 0.2' DEEP & OLD TIES RD PAVING PROJECT
 WILL INVOLVE THIS CORNER. DID NOT ACCEPT NOR REJECT
 MONUMENT. REFERENCED FOUND MON SO IT WOULD NOT BE
 DESTROYED BY THE PAVING PROJECT.
 1998 COMBS CSM21-448 FD PK 2692.38 TO L.S. @ S 1/4 COR SEC 35.
 1999 HOULE CSM22-331 FD PK 2655.07 TO HH 2' DEEP @ E 1/4 COR SEC 34
 1999 COMBS CSM22-422 2694.38 TO S 1/4 COR SEC 35
 2001 BARNES Z-17(1) USED 1986 DATA FOR NEWARK TWP PROJECT.

C) Was the corner restored through acceptance of (1) an obliterated evidence location, or, (2) a found perpetuated location?

ACCEPTED FOUND PK AS PERPETUATED.

I, Donald Barnes, hereby certify that the corner location as identified by the corner code index was determined by me under my direction and control and that this U.S. Public Land Survey Monument Record is correct and complete to the best of my knowledge and belief.

seal

emboss

SHEET 2 OF 2

CORNER CODE Z-17(2)

A-E 7.08 REQUIREMENT

Donald Barnes

3-07-03