

# U.S. PUBLIC LAND SURVEY MONUMENT RECORD

For Public Land Survey Corners In: WI ADMINISTRATIVE CODE A-E 7.08 REQUIREMENT

T. 1 N. - R. 14 E. of the 4th P.M.

CORNER CODE INDEX

CLINTON TWP

ROCK COUNTY WI

(PLACE "◆" SYMBOL AT PROPER PLSS CORNER LOCATION)

A	1	2	3	4	5	6	7	8	9	10	11	12	13	14	15	16	17	18	19	20	21	22	23	24	25	A
B																										B
C	6																									C
D																										D
E																										E
F																										F
G	7																									G
H																										H
I																										I
J																										J
K																										K
L	18																									L
M																										M
N																										N
O																										O
P	19																									P
Q																										Q
R																										R
S																										S
T	30																									T
U																										U
V																										V
W																										W
X	31																									X
Y																										Y
Z																										Z
	1	2	3	4	5	6	7	8	9	10	11	12	13	14	15	16	17	18	19	20	21	22	23	24	25	

## COORDINATES

(GNSS DERIVED VIA WISCORS)

NORTHING: 204973.92 ELEV:         

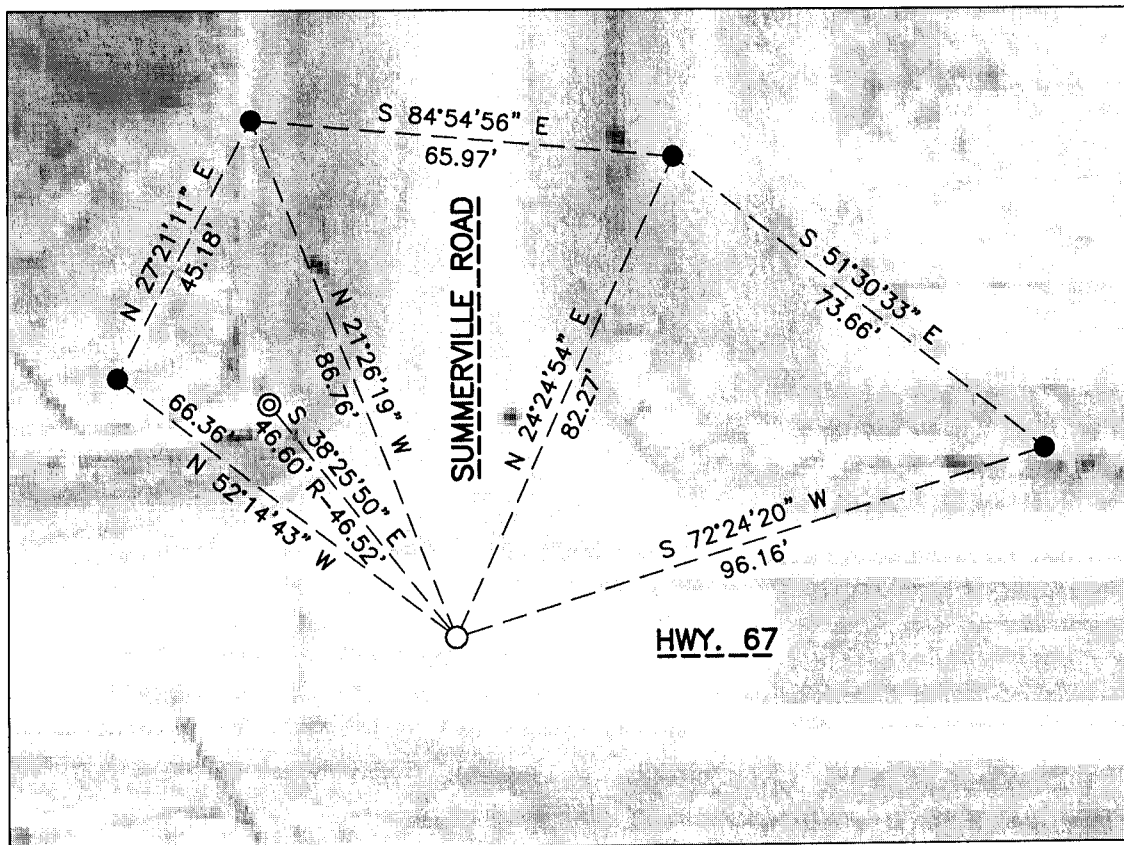
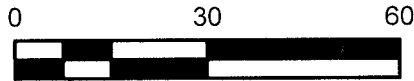
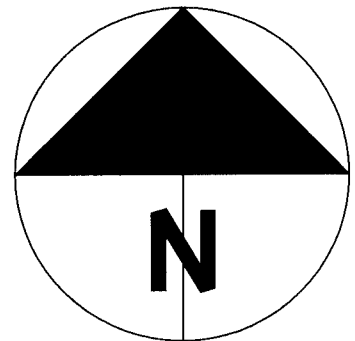
EASTING: 554444.88

Hor. Datum: WCCS-ROCK, (NA2011)

Vertical Datum: NAVD 88

(a) LEGEND

- - 5/8" x 24" REBAR SET, (RED CAP W/"PLSS WITNESS")
- - LARGE "SURVEY MARK" NAIL SET
- ⊙ - IRON PIPE FOUND



***B) Describe any record evidence, monument evidence, occupational evidence, testimonial evidence or any other material evidence you considered, and whether the monument was found or placed.***

In advance of Hwy. 67 resurfacing, (Hwy. 140 – Walworth County line), I set control and surveyed existing monuments, (exposed), and witnesses throughout the project. At this location I recovered a P.K. masonry nail and one, (1), witness monument from a tie sheet, (V-19), prepared by Don Barnes on May 10, 1994. The Barnes tie-sheet references a cast iron monument at this location.

Based on records in the Co. Surveyors office, it appears that the P.K. was set in 1999 from tie-sheets however, a new tie-sheet was not filed. (M8049). Two surveys, (M15415 & C.S.M. V. 21, PG.S. 129-131), reference the masonry nail. I believe the cast iron monument exists under the surface, (condition unknown), based on a metal detector.

Given the history of P.K., close proximity to the magnetic pull from below and proximity to the County coordinate for the same calculated by Barnes, I accept the position of the P.K. nail

Post construction and witnessed per the sketch, I set a “Survey Mark” nail at the surveyed location of the existing P.K. nail below.

***C) Was the corner restored through acceptance of (1) an obliterated evidence location, or, (2) a found perpetuated location?***

Restored from a found perpetuated location.

***D) Describe any material discrepancy between the location of the corner as restored or reestablished and the location of that corner as previously restored or reestablished by distance and direction. Show the discrepancy on the plan view drawing under (a), above. Show the distances between the corner as previously restored or reestablished and (1) the corner as restored or reestablished, and (2) to at least 4 of the witness monuments shown on the drawing in (a), above.***

Any discrepancies are noted on the face of the map with the most recently filed tie-sheets distances noted with an “R”. Absent the “R” distance to a found monument, assume I match the existing tie-sheet distance. Bearing discrepancies are not noted.

***(E) Was the corner reestablished through lost corner proportionate methods? If so, show the method, including the directions and distances to other public land survey corners used as evidence or used for proportioning the corner location.***

N/A

*I, Jason R. Houle, hereby certify that the corner location as identified by the corner code index was determined by me under my direction and control and that this U.S. Public Land Survey Monument Record is correct and complete to the best of my knowledge and belief.*

**CORNER CODE: V-21(1)**  
**(A.E. 7.08 REQUIREMENT)**

