

U.S. PUBLIC LAND SURVEY MONUMENT RECORD

For Public Land Survey Corners in:

WI ADMINISTRATIVE CODE A-E 7.08 REQUIREMENT

T. 2N., R. 11E

CORNER CODE INDEX

A	1	2	3	4	5	6	7	8	9	10	11	12	13	14	15	16	17	18	19	20	21	22	23	24	25
B	6																								
C		5																							
D			4																						
E				3																					
F					2																				
G	1																								
H		8																							
I			9																						
J				10																					
K					11																				
L	18					17																			
M							16																		
N								15																	
O									14																
P										13															
Q	19										20														
R												21													
S													22												
T														23											
U															24										
V																25									
W																	26								
X																		27							
Y																			28						
Z																				29					
																					30				
																						31			
																							32		
																								33	
																									34
																									35
																									36

PLYMOUTH TWP

ROCK COUNTY WI

IF AVAILABLE
ROCK COUNTY COORDINATES PREFERRED

North _____ Elev. _____

East _____

Hor. Datum _____ Vert. Datum _____

LATITUDE _____ ELLIPS. HT. _____

LONGITUDE _____

GPS (X) _____ TRAVERSE (X) _____

BASED ON THE FOLLOWING CONTROL:

PLACE MONUMENT SYMBOL AT PROPER LOCATION ON ABOVE INDEX

CORNER MONUMENT

WITNESS MONUMENT

(a)

BEARINGS ARE BASED ON:

FIELD BOOK _____ PAGE # _____

SHEET 1 OF 2

SHOW A PLAN VIEW DRAWING DEPICTING THE CORNER MONUMENT AND SURROUNDING PHYSICAL FEATURES, INCLUDING THE EXCAVATION AREA AND DEPTH.

PLANNING & ZONING COMMITTEE ADOPTED THE ABOVE FORM ON 12/2/1982

CORNER CODE V-11(2)

PL606

(B) Describe any record evidence, monument evidence, occupational evidence, testimonial evidence or any other material evidence you considered, and whether the monument was found or placed.

- 1855 CHURCH VOL 1 PG 38. S35 3/4E 170.12 TO NW COR OF SMITZS HOUSE, N28 1/2W 29.37' TO 6" LOCUST TREE, 2664.75 TO NW COR SEC 33, & 2664.92 TO NE COR SEC 33.
- 1868 LOCKE REMONUMENTATION NOTES. WEST BETWEEN SEC 28 AND 33 VAR 6
2.17 BROOK BRIDGE 10 LKS WIDE
40.47 INTERSECTED 1/4 LINE AT STONE SET BY CHURCH CENTER OF ROAD (SEE CO. SURVEYORS RECORD SEC 28) CONTINUED WEST WITH. VAR 6-10'
54.10 CENTER OF SLUICE BRIDGE 5 LKS WIDE
80.94 INTERSECTED WEST BOUNDARY AT STONE SET BY CHURCH. (SEE CO. SURVEYORS RECORD) JAKE FISHER, S. IMYLIE AND SEVERAL OTHER NEIGHBORS UNITE IN DECLARING THAT THE OLD CORNERS IN SEC 28 HAD BEEN KEPT UP & THAT THESE STONES SET BY CHURCH WERE SET WHERE THE OLD CORNERS WERE. COR 34.5 LKS SOUTH AND 2 LKS EAST OF CORNER OF J. FISHERS FENCES ON NORTH & WEST SIDES OF HIGHWAYS.
- 1871 RUGER VOL 1 PG 38 STONE MON. 2667.23 TO NW COR SEC 33, 2664.75 TO NE COR SEC 33, 2661.12 TO CENTER OF SEC 33, & 5321.78 TO S 1/4 COR SEC 33. VAR OF 5-33 ON NORTH LINE OF NW 1/4 AND VAR OF 5-15 ON NORTH LINE OF NE 1/4 OF SECTION 33.
- 1978 BARNES VOL 5 PG 473 CALLS FOR N88-56-51W 2670.13 TO NW COR SEC 33 S0-02-09W 2666.3 TO FENCE POST NEAR CENTER OF SEC 33, 5332.31 TO S 1/4 COR SEC 33, & S88-43-18E 2670.13 TO NE COR SEC 33.
- 1979 BARNES VOL 6 PG 125 SET ALUM. MON AT SINGLE PROPORTIONATE MEASUREMENT FROM THE NE & NW CORNER OF SEC 33. USED RUGER'S PRORATED DISTANCE FROM THE CENTER OF THE SECTION TO CONTROL THE N/S POSITION. LOCKE'S REMONUMENTATION NOTES STATES THE CORNER IS NOT ON A STRAIGHT LINE BETWEEN THE NE & NW CORNERS OF SEC 33. THE TERRAIN INDICATES A LARGE ROAD CUT. DUG 36" DEEP AND FOUND SAND BUT NOT THE OLD ROAD BED AS FOUND AT THE NW & NE CORNERS. SAND WAS FOUND UNDER THE OLD ROAD AT THOSE CORNERS. IF PLACED ON A STRAIGHT LINE THE CORNER WOULD BE FURTHER SOUTH BY 5 FEET. IF SET AT THE CENTERLINE OF THE EXISTING ROAD, THE DIFFERENCE IN BEARING BETWEEN THE NW & NE CORNER WOULD BE 0-05-28. THE RECORD DIFFERENCE IN BEARINGS ARE:
RUGER (1871) 0-18, LOCKE (1868) 0-10, AS SET 0-12-33, & IF AT CENTER OF PVMT 0-05-28
- 19?? DOT Z-11 REFERENCED CORNER WITH #5 REBAR.

FOUND DOT REBARS. FOUND PK AND 1.6' DEEP FOUND BOTTOM HALF OF ALUM. MON. PLACED 3 MAGNETS ON TOP.

C) Was the corner restored through acceptance of (1) an obliterated evidence location, or, (2) a found perpetuated location?
ACCEPTED FOUND PERPETUATED LOCATION.

D) Describe any material discrepancy between the location of the corner as restored or reestablished and the location of that corner as previously restored or reestablished by distance and direction. Show the discrepancy on the plan view drawing under (a), above. Show the distances between the corner as previously restored or reestablished and (1) the corner as restored or reestablished, and (2) to at least 4 of the witness monuments shown on the drawing in (a), above.

(E) Was the corner reestablished through lost corner proportionate methods? If so, show the method, including the directions and distances to other public land survey corners used as evidence or used for proportioning the corner location.

I, Donald Barnes, hereby certify that the corner location as identified by the corner code index was determined by me under my direction and control and that this U.S. Public Land Survey Monument Record is correct and complete to the best of my knowledge and belief.

seal

Donald Barnes
emboss

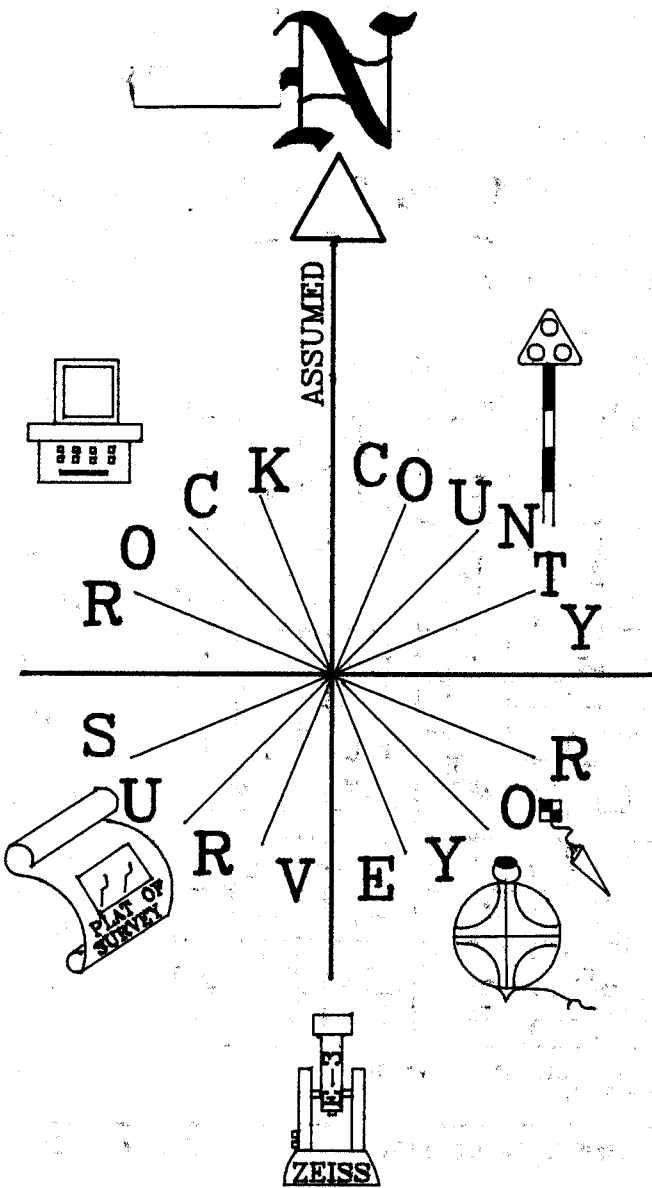
APRIL 8, 1998

A-E 7.08 REQUIREMENT

Number of included sheets _____

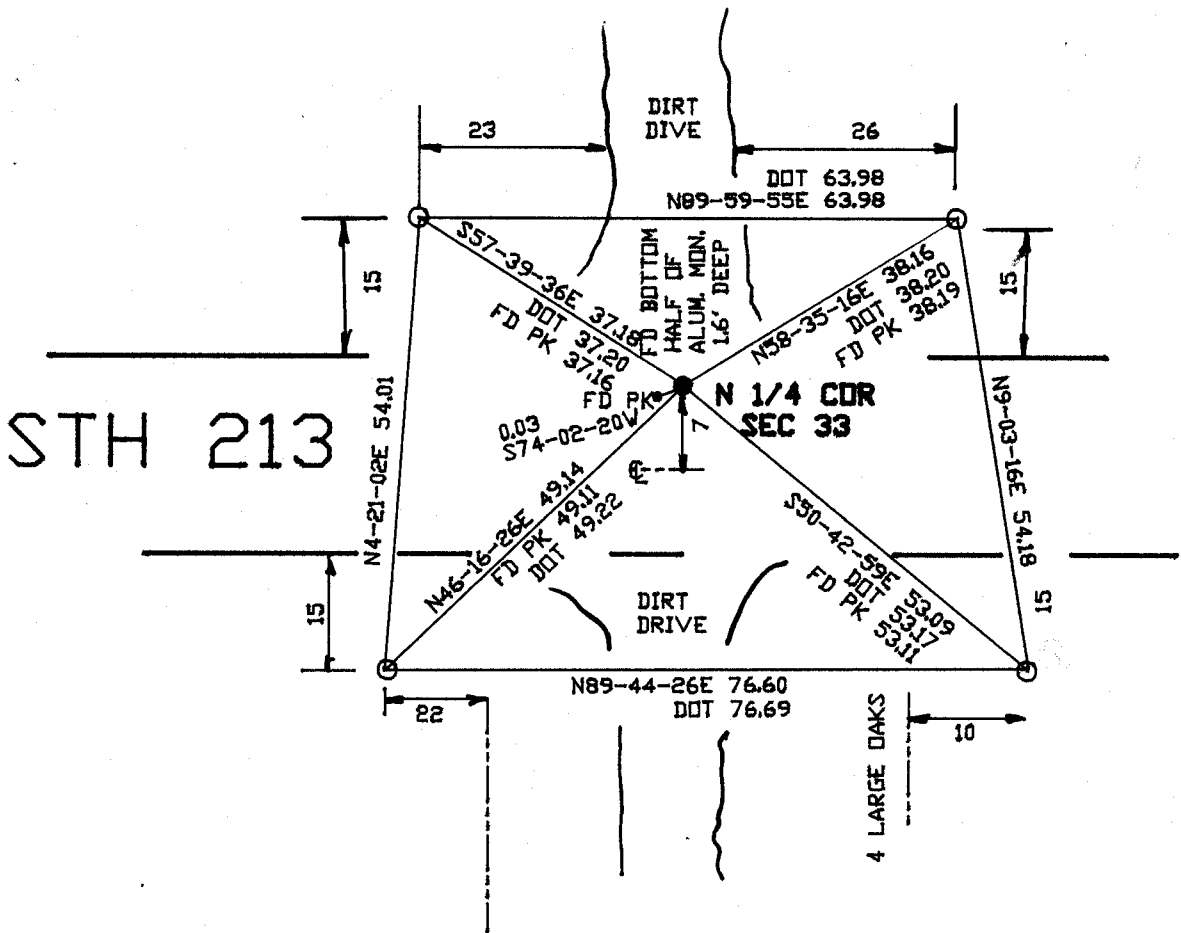
CORNER CODE

V-11 (2)



OBSERVATION SHEETS
 ○ FOUND DOT PINS
 CORNER WILL BE DISTURBED BY ROAD CONSTRUCTION

HSE #10118



HSE #10119

EMBRISSEY SEAL
Donald Baines
 APRIL 8, 1998

V-11(2)