

U.S. PUBLIC LAND SURVEY MONUMENT RECORD

For Public Land Survey Corners in:

WI ADMINISTRATIVE CODE A-E 7.08 REQUIREMENT

T. 2 N., R. 11 E

CORNER CODE INDEX

A	2	3	4	5	6	7	8	9	10	11	12	13	14	15	16	17	18	19	20	21	22	23	24	25
B																								
C	6																							
D		5																						
E			4																					
F				3																				
G					2																			
H						1																		
I																								
J																								
K																								
L	18																							
M		17																						
N			16																					
O				15																				
P					14																			
Q						13																		
R							12																	
S								11																
T									10															
U										9														
V											8													
W												7												
X													6											
Y														5										
Z															4									

PLYMOUTH TWP
ROCK COUNTY WI

IF AVAILABLE
ROCK COUNTY COORDINATES PREFERRED

North _____ Elev. _____

East _____


Hor. Datum _____ Vert. Datum _____

LATITUDE _____ ELLIPS. HT. _____


LONGITUDE _____

GPS (X) _____ TRAVERSE (X) _____

BASED ON THE FOLLOWING CONTROL:

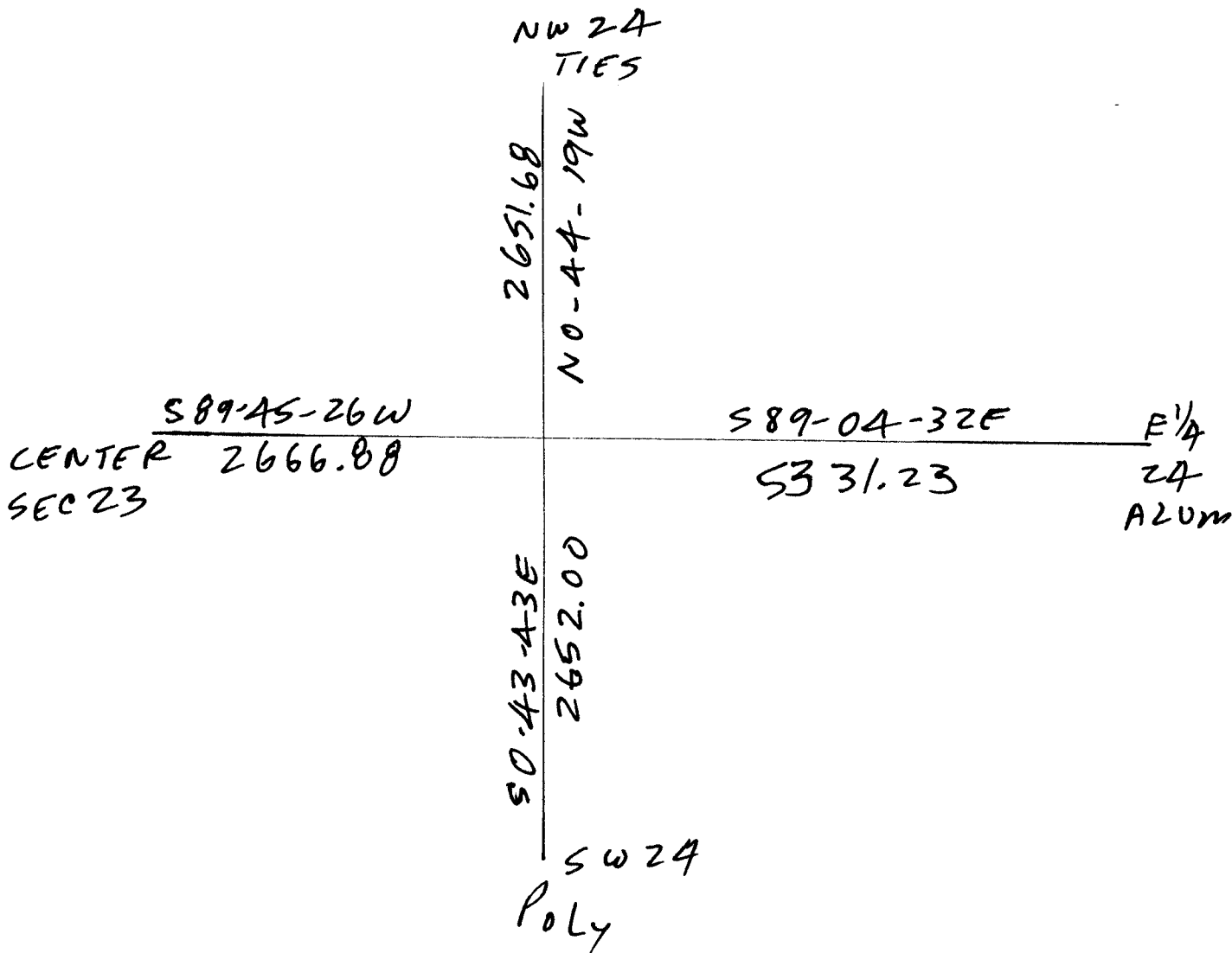
PLACE MONUMENT SYMBOL  AT PROPER LOCATION ON ABOVE INDEX

 CORNER MONUMENT

 WITNESS MONUMENT

(a)

BEARINGS ARE BASED ON:



OB SERVATION SHEETS 50, 579,
369, 580

FIELD BOOK _____ PAGE # _____

SHEET 1 OF 2

SHOW A PLAN VIEW DRAWING DEPICTING THE CORNER MONUMENT AND SURROUNDING PHYSICAL FEATURES, INCLUDING THE EXCAVATION AREA AND DEPTH.

PLANNING & ZONING COMMITTEE ADOPTED THE ABOVE FORM ON 12/21/1982

CORNER CODE P21(1)

PL579

(B) Describe any record evidence, monument evidence, occupational evidence, testimonial evidence or any other material evidence you considered, and whether the monument was found or placed.

1833 HARRISON NORTH BETWEEN SECS 23 & 24

1452 LEFT TIMBER & ENTER MARSH

2640 QUARTER SEC COR IN MARSH POST & MOUND OF TUSSACKS

5280 COR TO SECS 13,14,23,24 IN MARSH {RED O 18 N3E 1067.88' RED O 9 N2W 1072.5' LAND SOUTH 1/4 AS BEFORE LAST 3/4 LEVEL & WET 3RD RATE MARSH

1868 LOCKE PG 25 SOUTH BETWEEN SECS 23 & 24 VAR 7-30

2650.56 SET TEMPORARY 1/4 COR. COR LOST

5302.44 INTERSECTED SOUTH BOUNDARY 28.38' EAST OF COR.

2651.22 SET PERMANENT 1/4 COR 0.66' SOUTH AND 14.19' WEST OF TEMPORARY 1/4 COR. COR IN LINE OF E & W FENCE AND 14.52' E OF N & S FENCE VAR CORRECTED 7-12 SET THE MONUMENT IN MOUND OF TUSSACKS. AUG 24, 1868

1870 RUGER VOL 2 PG 47 STONE MON BY LOCKE. VAR 7-00

2649.90 TO NE COR SEC 23, VAR 6-31 2645.28 TO SE COR SEC 23, VAR 6-24 2665.08 TO CENTER SEC 23, & VAR 6-24 5320.26 TO W 1/4 COR SEC 23

1892 BLEEDORN VOL 2 PG 466 USED MON TO SUBDIVIDE SEC 24.

1982 BARNES VOL 6 PG 282 NO-24-40W 2651.66 TO NE COR SEC 23 & SO-45-41E 2651.66 TO SE COR SEC 23.

1982 BARNES P-21 DUG & FD BARB WIRE FENCE (N/S) & PIECES OF LIMESTONE. SET BERNTSEN WI-C POLY. MON. 15" DEEP WITH 3/8"X32" IRON BOLTS HORIZONTALLY ON E & W SIDE. REFERENCED SAME. SHOWS LIMITS OF EXCAVATION. SO-45 41E 2651.66 TO SE COR SEC 23, SB9-43-50W 2666.79 TO CENTER SEC 23, NO-45-40W 2651.66' TO NE COR SEC 23. NO-21-W TO RADIO MAST, N20-16E TO WIND GENERATOR, N27-45E TO RADIO MAST. COR WAS PROBABLY DESTROYED WHEN THE FENCES WERE REMOVED.

1991 BARNES R-21 NO-45-41W 2651.66 TO NE COR SEC 23 & SO-45-41E 2651.66 TO SE COR SEC 23.

1996 KREBS MAP #8905 ALUM SB8-29-53E 2663.20 TO CEN SEC 24, SB8-29-53E 5331.22 TO E 1/4 COR SEC 24, NB8-39-37W 2666.86 TO CEN SEC 23, & SO-08-56E 2651.83 TO SW COR SEC 24

2002 ERICKSON FED. PRELIMINARY SB9-42-56E 2663.66 NAD83 TO CEN SEC 24, S1-22-31E 2651.62 NAD83 TO SW COR SEC 24 SB9-09-20W 2665.30 TO CEN SEC 23

FD ALUM. MON. 15" DEEP IN FARM FIELD. PLACED 2 MAGNETS 18" DEEP ON NORTH SIDE OF MON.

(C) Was the corner restored through acceptance of (1) an obliterated evidence location, or, (2) a found perpetuated location?

ACCEPTED FOUND ALUM. MON., WHICH PERPETUATED THE CUT LS.

I, Donald Barnes, hereby certify that the corner location as identified by the corner code index was determined by me under my direction and control and that this U.S. Public Land Survey Monument Record is correct and complete to the best of my knowledge and belief.

Seal

Donald Barnes

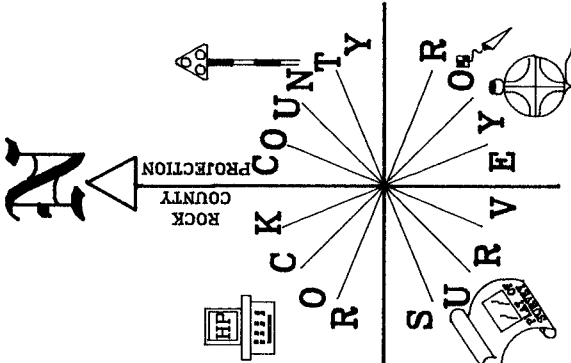
SHEET 1 OF 2

Emboss

2-06-03

CORNER CODE P-21(1)

A-E 7.08 REQUIREMENT



NO-44-23W 2651.66
 1996 KREBS 2651.67
 1982 BARNES 2651.66
 1870 RUGER 2649.90
 1868 LOCKE 2651.22
 N19-33-28E 12,038'
 TV ANT. ON TALL MAST
 N27-53-24E 32,243' ANT.
 FARM FIELD

NE COR SEC 23
 RED/WHITE ANT.
 N1-03-38W 23,591
 N29-51-48W 44,857'
 ANT.
 FARM FIELD

FD ALUM. MON.
 15" DEEP
 PLACED 2 MAGNETS ON
 NORTH SIDE.
 S89-45-24W 2666.87
 2002 ERICKSON 2665.30
 1996 KREBS 2666.86
 1982 BARNES 2666.79
 1870 RUGER 2665.08
 CENTER SEC 23

E 1/4 COR SEC 23
 S0-43-46E 2651.98
 2002 ERICKSON 2651.62
 1996 KREBS 2651.83
 1982 BARNES 2651.66
 1870 RUGER 2645.28
 1868 LOCKE 2651.22
 E 1/4 COR SEC 24
 #8906 5331.22
 S89-04-31E 5331.22
 OBSERVATION SHEETS
 50,70,365,579, & 580

FARM FIELD
 FARM FIELD
 SE COR SEC 23

Donald Barnes
 EMBOSSED
 SEAL
 2-06-03

CENTER
 SEC 23

SHEET 2 OF 2

P-21

(1)