

U.S. PUBLIC LAND SURVEY MONUMENT RECORD

For Public Land Survey Corners in:

WI ADMINISTRATIVE CODE A-E 7.08 REQUIREMENT

T. 2 N., R. 11 E

CORNER CODE INDEX

A	2	3	4	5	6	7	8	9	10	11	12	13	14	15	16	17	18	19	20	21	22	23	24	25
B	6																							
C																								
D																								
E																								
F																								
G	1	8																						
H																								
I																								
J																								
K	18	11	16																					
L																								
M																								
N																								
O																								
P	19	20	21	22	23	24																		
Q																								
R																								
S	30	29	28	27	26	25																		
T																								
U																								
V																								
W																								
X	31	32	33	34	35	36																		
Y																								
Z																								

PLYMOUTH TWP
ROCK COUNTY WI

IF AVAILABLE
ROCK COUNTY COORDINATES PREFERRED

North _____ Elev. _____

East _____

Hor. Datum _____ Vert. Datum _____

LATITUDE _____ ELLIPS. HT. _____

LONGITUDE _____

GPS (X) _____ TRAVERSE (X) _____

BASED ON THE FOLLOWING CONTROL:

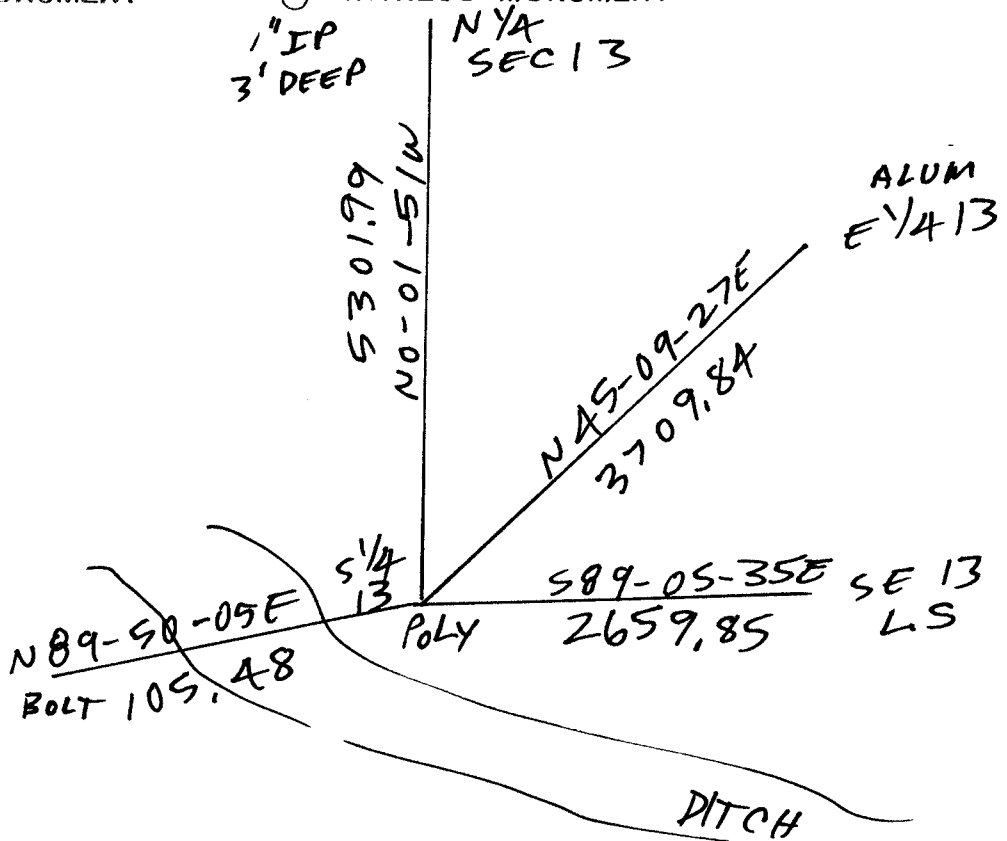
PLACE MONUMENT SYMBOL \blacklozenge AT PROPER LOCATION ON ABOVE INDEX

\blacklozenge CORNER MONUMENT

\circ WITNESS MONUMENT

(a)

BEARINGS ARE BASED ON:



FIELD BOOK _____ PAGE # _____

SHEET 1 OF 1

SHOW A PLAN VIEW DRAWING DEPICTING THE CORNER MONUMENT AND SURROUNDING PHYSICAL FEATURES, INCLUDING THE EXCAVATION AREA AND DEPTH.

PLANNING & ZONING COMMITTEE ADOPTED THE ABOVE FORM ON 12/2/1982

CORNER CODE N-23(1)

PL572

(B) Describe any record evidence, monument evidence, occupational evidence, testimonial evidence or any other material evidence you considered, and whether the monument was found or placed.

1833 HARRISON EAST ON RANDOM BET SEC 13 & 24
2640 TEMPY 1/4 P
3118.5 BROOK 49.5' CRS SE
4950 ENTER TIM & LEVE MARSH
5329.5 INT. E. BDY 46.2' N OF P. LAND LEVEL & WET 3RD
RATE MARSH
WEST COR. WEST
378.84 BURR O. 14
2664.75 QUARTER SEC COR. IN MARSH POST BUT NO MOUND
5329.5 SEC. COR

1861 RUGER VOL 1 PG 172 STATES NOTHING ABOUT MON.
2628.12 TO SW COR SEC 13.

1868 LOCKE PG 28 WEST BETWEEN SEC 13 AND 24 VAR 5-50
910.8 CENTER OF RR
2640 SET TEMPORARY 1/4 COR. COR LOST.
5322.9 INTERSECTED WEST BOUNDARY 27.06' SOUTH OF
COR.
2661.45 SET PERMANENT 1/4 COR 21.45' WEST AND 13.53'
NORTH OF TEMPORARY 1/4 COR. COR 33' OR 49.5'
SOUTH OF CREEK. MADE MOUND AROUND
MONUMENT. VAR CORRECTED 5-32 AUG 26, 1868

1870 RUGER VOL 2 PG 33 STONE MON SET BY LOCKE. 2655.68
TO SW COR SEC 13, 2653.20 TO SE COR SEC 13, & VAR 6-10
ALONG N/S LINE SEC 13.

1892 BLEEDORN VOL 2 PG 466 MON. VAR 4-44 ALONG N/S LINE
SEC 24.

1982 BARNES N-23 DUG 2' DEEP AND FD NOTHING. SET
BERNTSEN W1-C POLY. MON. WITH 3/8X32" BOLT ON E & W
SIDE OF MON. ALSO SET CARSONITE POST. MAP SHOWS
LIMITS OF EXCAVATION. NORTH & EAST SIDE OF DITCH.
CORNER PLACED MIDWAY & ON LINE WITH SE & SW CORNERS
SEC 13. REFERENCED LOCATION. N89-06-43W 2660.95 TO SW
COR SEC 13 & S89-06-43E 2660.95 TO SE COR SEC 13.

1982 BARNES VOL 6 PG 282 & R-21 N89-06-43W 2660.95 TO NW
COR SEC 24 & S89-06-43E 2660.95 TO NE COR 24

1996 KREBS MAP #8905 FD POLY WITH TOP BROKE OFF, S88-31-
18E 2659.91 TO NE COR SEC 24, N88-29-00W 2662.26 TO NW
COR SEC 24, S0-11-00E 2651.00 TO CEN SEC 24, & S0-11-
00E 5281.30'

2002 ERICKSON FED PRELIMINARY 230,227.368N/S;
2,199,968.208E/W NAD83 REDUCED TO COUNTY-
249,267.955N/S; 461,774.662 E/W N89-42-37W 2662.46
NAD83 TO NW COR SEC 24, S1-24-04E 2651.40 NAD83 TO
CENTER SEC 24, S1-24-04E 5281.6 TO S 1/4 COR SEC 24.

C) Was the corner restored through acceptance of (1) an obliterated evidence location, or, (2) a found perpetuated location?

FOUND POLY. MON. WITH TOP BROKE OFF & CARSONITE POST. FD
BENT & LEANING BOLT 106.7 TO THE WEST.

I, **Donald Barnes**, hereby certify that the corner location as identified by the corner code index was determined by me under my direction and control and that this U.S. Public Land Survey Monument Record is correct and complete to the best of my knowledge and belief.

Seal

Donald Barnes
Emboss

SHEET 1 OF 1

APR 11 2003

CORNER CODE **N-23(1)**
A.E. 7.08 REQUIREMENT