

U.S. PUBLIC LAND SURVEY MONUMENT RECORD

For Public Land Survey Corners in:

WI ADMINISTRATIVE CODE A-E 7.08 REQUIREMENT

T. 2N., R. 11E

CORNER CODE INDEX

A	1	2	3	4	5	6	7	8	9	10	11	12	13	14	15	16	17	18	19	20	21	22	23	24	25
B																									
C	6																								
D																									
E																									
F																									
G	1																								
H																									
I																									
J																									
K																									
L	18																								
M																									
N																									
O																									
P	19																								
Q																									
R																									
S																									
T	30																								
U																									
V																									
W																									
X	31																								
Y																									
Z																									

PLYMOUTH TWP

ROCK COUNTY WI

IF AVAILABLE
ROCK COUNTY COORDINATES PREFERRED

North _____ Elev. _____

East _____

Hor. Datum _____ Vert. Datum _____

LATITUDE _____ ELLIPS. HT. _____

LONGITUDE _____

GPS (X) _____ TRAVERSE (X) _____

BASED ON THE FOLLOWING CONTROL:

PLACE MONUMENT SYMBOL AT PROPER LOCATION ON ABOVE INDEX

CORNER MONUMENT

WITNESS MONUMENT

(a)

BEARINGS ARE BASED ON:

FIELD BOOK _____ PAGE # _____

SHEET 1 OF 3

SHOW A PLAN VIEW DRAWING DEPICTING THE CORNER MONUMENT AND SURROUNDING PHYSICAL FEATURES, INCLUDING THE EXCAVATION AREA AND DEPTH.

PLANNING & ZONING COMMITTEE ADOPTED THE ABOVE FORM ON 12/2/1982

CORNER CODE E-23(17)

PL532

(B) Describe any record evidence, monument evidence, occupational evidence, testimonial evidence or any other material evidence you considered, and whether the monument was found or placed.

- 1833 HARRISON EAST ON RAND BET SECS 1 & 12
99 LEFT TIMBER ENTER MARSH
1320 LEFT MARSH & ENTER TIMB.
2640 TEMPY 1/4 P
4870.14 LEFT TIMBER & ENTER MARSH
5214 BROOK CRS S.E.
5266.14 INT E BDY 48.48' S OF P. LAND LEVEL & ? WET 2ND
RATE TIMBER MOSTLY BURR O & RED O
COR. WEST.
2633.07 QUARTER SEC COR {BURR O 6 N21W 116.16' BURR
O 7 S75E 106.92' BURR O 6 BURR O 7} MARKED
- 1843 STEBBIN TWP RD REC BK 1 PG 2 VARIATION OF NEEDLE 7 1/2
BEGINNING AT THE SE COR OF SEC 1 T2N R11E; THENCE
WEST 2 1/2 MILES (THIS COURSE FROM QUARTER POST ON
SOUTH SIDE OF SEC 1 TO SW COR SOUTH ON A RANGE FROM
BELOIT TO MADISON) TO THE QUARTER STAKE ON THE SOUTH
LINE OF SEC 3; THENCE N72W ONE MILE AND 20 CHAINS TO
A STAKE; THENCE 59 WEST 1079.1' TO A BURR OAK TREE;
THENCE N70W 815.1' TO A STAKE; THENCE S65W 2610.3' TO
A BLACK OAK TREE; THENCE S45W 1894.2' TO SEC BETWEEN
SECTIONS 5 & 8, 247.5' EAST OF THE SE COR OF SEC 6, T2N
R11E; THENCE WEST FOUR MILES 3679.5' TO A STAKE ON
THE SEC LINE BETWEEN SECS 4 & 9, 660' WEST OF THE
QUARTER POST; THENCE N43 1/2W 838.2' TO A BURR OAK
TREE; THENCE N65W 3444.54' TO A POINT ON THE LINE
BETWEEN THE COUNTIES OF ROCK AND GREEN 341.88'
SOUTH OF THE QUARTER POST ON THE WEST SIDE OF SEC 7,
T2N, R10E AND THE WHOLE LENGTH OF THE ROAD IS 12
MILES 3927'
- 1864 LOCKE VOL 1 PG 218 FOUND N. B.T. & OLD STAKE. NOTES
SHOULD READ N24W. SET STAKE WITH FLINT H.H. 18x12x7
ON N & BROWNS HH 12X8X8 ON S & LIMESTONE 17X11X3
ON E AND SMALL LIMESTONE ON WEST.
- 1867 LEE VOL 1 PG 331 FOUND STAKE SET BY LOCKE.
- 1868 LOCKE REMONUMENTATION NOTES. FOUND NORTH B.T. &
CORNER AS SET BY SELF. CORNER IS IN CENTER OF HIGHWAY.
- 1868 LOCKE PG 32 COMMENCED AT COR FOR SEC 1 AND 2 11
AND 12 FOUND BT IN SEC 1 STUMP OF BT IN SEC 11
AND WHERE BT IN SEC 2 WAS DUG OUT & STONE ON
COR. COR IN CENTER OF HIGHWAYS EAST BETWEEN
SECS 1 & 12 VAR 5-37
- 481.14 CENTER SLUICE BRIDGE
2686.86 INTERSECTED 1/4 LINE 14.52' SOUTH OF COR.
FOUND NORTH B.T. AND COR AS SET BY SELF (SEE
CO SURVEYORS RECORD) VAR CORRECTED 5-54
COR IN CENTER OF HIGHWAY CONTINUED EAST
FROM 1/4 COR WITH VAR 5-55
- 5303.76 INTERSECTED EAST BOUNDARY 2.64' NORTH OF
COR. VAR CORRECTED 5-52 AUG 27 1868
- 1876 RUGER VOL 2 PG 205 FOUND STONE MONUMENT.
- 1966 BATTERMAN JR. VOL 4 PG 295 DUG AND FOUND CUT
LIMESTONE FRACTURED AND TILTED. STRAIGHTENED STONE.
MAP SHOWS REFERENCE PIPES.
- 1983 COMBS CSM 11-329 SET PK 2629.38' TO SE COR SEC 1

SHEET 1 OF 3 CORNER CODE E-23(1)

Donald Barnes
2/18/03

PL532

1988 BARNES E-23 FD PK & REFERENCE PIPES. ACCEPTED
FOUND PERPETUATED LOCATION. 2' SOUTH OF NORTH PVMT
EDGE.

1993 COMBS CSM 16-370 PK 2687.66 TO NW COR SEC 12 A ALUM

FD PK & SET COTTON PIN ON SOUTH EDGE OF PK AT THE INTERSECTION
OF RECORD DISTANCES FROM THE REFERENCE PIPES.

C) Was the corner restored through acceptance of (1) an obliterated evidence location, or, (2) a found perpetuated location?

ACCEPTED LOCATION AS DETERMINED BY THE REFERENCE TIES,
WHICH PERPETUATED THE CUT L.S. POSITION.

D) Describe any material discrepancy between the location of the corner as restored or reestablished and the location of that corner as previously restored or reestablished by distance and direction. Show the discrepancy on the plan view drawing under (a), above. Show the distances between the corner as previously restored or reestablished and (1) the corner as restored or reestablished, and (2) to at least 4 of the witness monuments shown on the drawing in (a), above.

THERE IS A MINOR DISCREPANCY BETWEEN THE FD PK THAT COMBS
SET IN HIS 1983 CSM 11-329 AND THE INTERSECTION OF THE
RECORD DISTANCES TO THE FOUND REFERENCE PIPES AS SHOWN
IN THE DRAWING.

(E) Was the corner reestablished through lost corner proportionate methods? If so, show the method, including the directions and distances to other public land survey corners used as evidence or used for proportioning the corner location.

I, **Donald Barnes**, hereby certify that the corner location as identified by the corner code index was determined by me under my direction and control and that this U.S. Public Land Survey Monument Record is correct and complete to the best of my knowledge and belief.

Seal

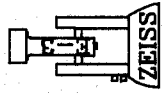
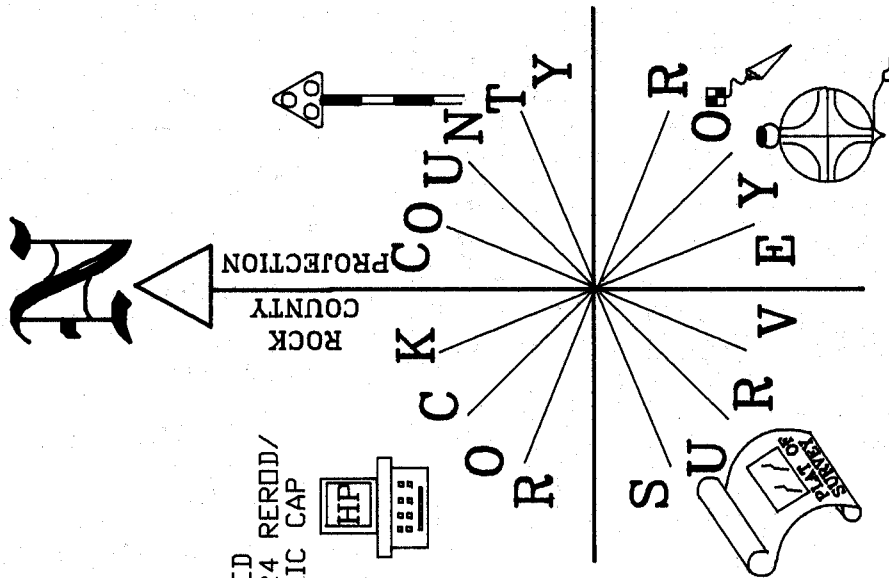
2/18/63

SHEET 2 OF 3

Emboss

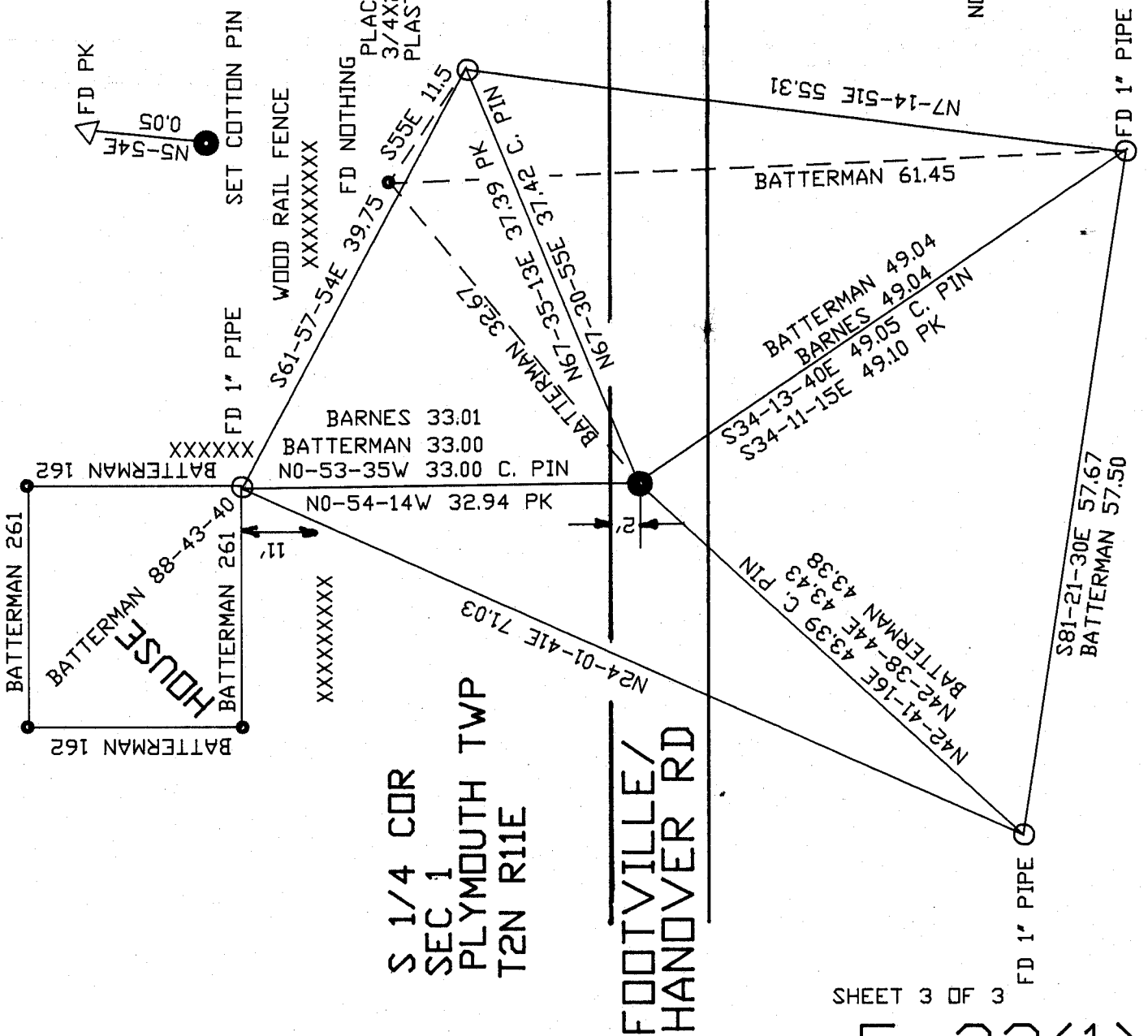
Donald Barnes

CORNER CODE **E-23(1)**
A-E 7.08 REQUIREMENT



NOT TO SCALE

OBSERVATION SHEETS
82,90,150,225,531,539,1532
SET COTTON GIN PIN ON
SOUTH EDGE OF FD PK



SHEET 3 OF 3

E-23(1)

EMBOSSED
SEAL

Donald Barnes
2/18/03