

U.S. PUBLIC LAND SURVEY MONUMENT RECORD

For Public Land Survey Corners in:

WI ADMINISTRATIVE CODE A-E 7.08 REQUIREMENT

T. 2N., R. 11E

CORNER CODE INDEX

A	2	3	4	5	6	7	8	9	10	11	12	13	14	15	16	17	18	19	20	21	22	23	24	25
B	6																							
C																								
D																								
E																								
F																								
G	1	8	9																					
H																								
I																								
J																								
K																								
L	18	11	16																					
M																								
N																								
O																								
P	19	20	21	22	23	24																		
Q																								
R																								
S																								
T	30	29	28	27	26	25																		
U																								
V																								
W																								
X	31	32	33	34	35	36																		
Y																								
Z																								

PLYMOUTH TWP
ROCK COUNTY WI

IF AVAILABLE
ROCK COUNTY COORDINATES PREFERRED

North _____ Elev. _____

East _____

Hor. Datum _____ Vert. Datum _____

LATITUDE _____ ELLIPS. HT. _____

LONGITUDE _____

GPS (X) _____ TRAVERSE (X) _____

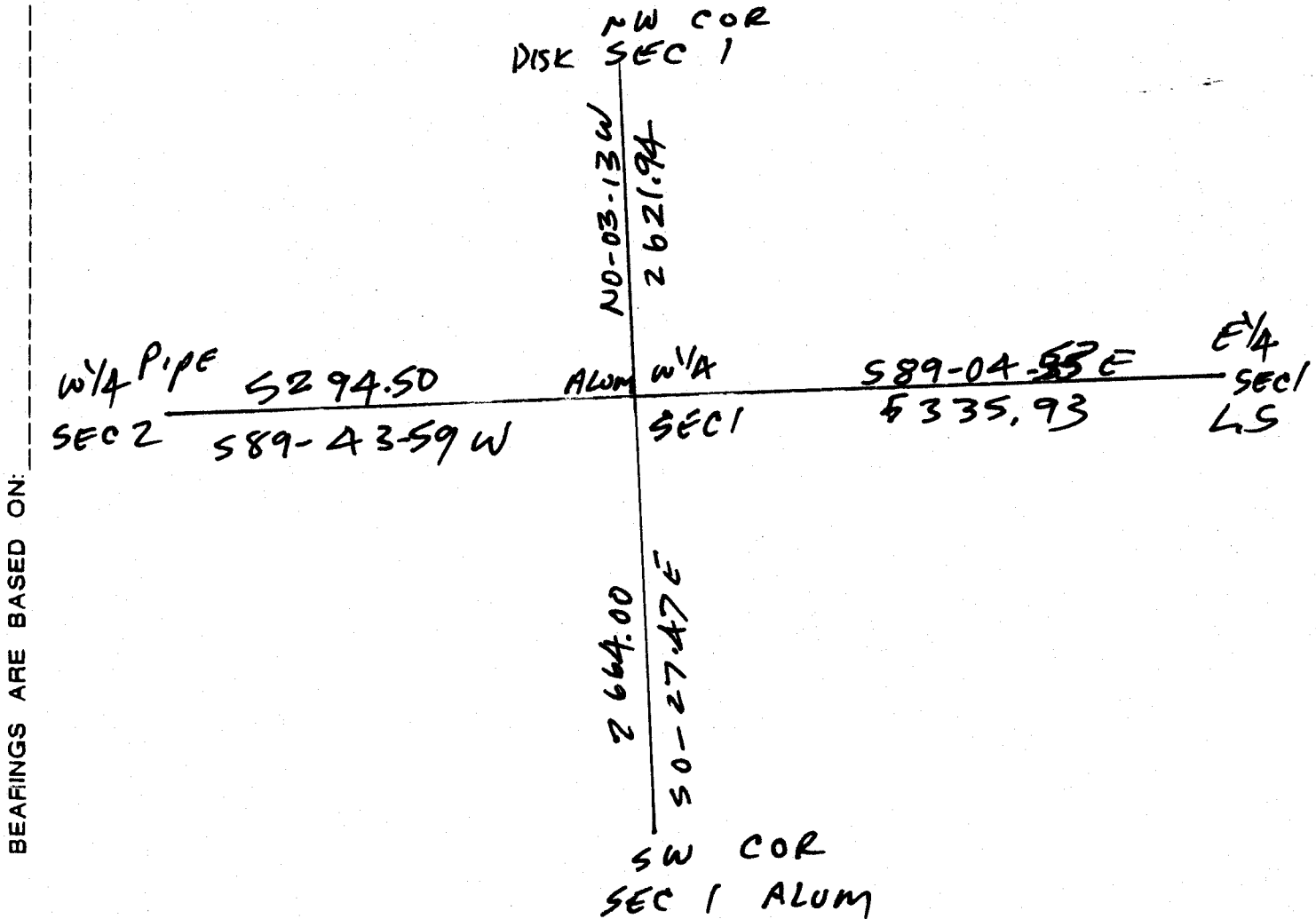
BASED ON THE FOLLOWING CONTROL:

PLACE MONUMENT SYMBOL \blacklozenge AT PROPER LOCATION ON ABOVE INDEX

\blacklozenge CORNER MONUMENT

\circ WITNESS MONUMENT

(a)



OBSERVATION SHEETS 519,531, 7059, 8080
FIELD BOOK _____ PAGE # _____ SHEET 1 OF 1

SHOW A PLAN VIEW DRAWING DEPICTING THE CORNER MONUMENT AND SURROUNDING PHYSICAL FEATURES, INCLUDING THE EXCAVATION AREA AND DEPTH.

PLANNING & ZONING COMMITTEE ADOPTED THE ABOVE FORM ON 12/2/1982

CORNER CODE C-21(1)

PL519

(B) Describe any record evidence, monument evidence, occupational evidence, testimonial evidence or any other material evidence you considered, and whether the monument was found or placed.

- 1833 HARRISON NORTH BETWEEN SECS 1 & 2
2640 QUARTER SEC COR {BURR O 12 N71E 148.5' BURR O 24 S47W 48.84' BURR O 12 BURR O 24} MARKED
5240.4 INT. N BDG 3.3' W OF P {BURR O. 24 S41E 316.8' BURR O. 14 S45W 293.7 LAND HIGH ROLLING 2ND RATE BUR & BLACK O. TIMBER FRIDAY DEC 20TH 1833
- 1845 PEASE TWP RD REC BK 1 PG 5 BEGINNING AT THE NW COR OF SEC 1 T2N R11E AND RUNNING SOUTH ON THE LINE BETWEEN SEC 1 & 2 2602.38' TO THE 1/4 POST ON THE WEST SIDE OF SEC 1 AFORESAID; THENCE SOUTH ON THE LINE AFOREMENTIONED TO THE SW COR OF SAID SEC 1 IN ALL 5242.38'?? . SAID RD LAID OUT BE FENCED 66' IN WIDTH OR 33 ON EACH SIDE OF THE LINE DESCRIBED.
- 1868 LOCKE PG 35 SOUTH BETWEEN SECS 1 & 2 VAR 7-10
2621.52 INTERSECTED 1/4 LINE AT COR. FOUND SOUTH BT AND STAKE & STONE SET ON CORNER. COR IN CENTER OF HIGHWAY AND IN LINE OF E & W FENCE.
CONTINUED SOUTH WITH VAR 7-25
5285.28 INTERSECTED SOUTH BOUNDARY 2.97' EAST OF COR. VAR CORRECTED 7-21 AUG 27 1868
- 1877 RUGER VOL 2 PG 234 STONE MON. VAR 5-58 2616.90 TO NE COR SEC 2, 2628.12 TO GEN SEC 2, 5279.34 TO W 1/4 COR SEC 2
- 1933 SUNNY VOL 3 PG 234 FD 6X6 CUT STONE. SET 1 1/4 PIPE ON TOP. SW COR SCHOOL BLDG N30E 134.1, 10" BOX ELDER N88E 83', & MON. IN LINE WITH FENCE EAST. 2621.6 TO NE COR SEC 2.
- 1933 SUNNY VOL 3 PG 235 SEE PG 234. 2663.9 TO SE COR SEC 2
- 1938 SUNNY VOL 3 PG 391 FD STONE MON. SET 1 1/4 CAPPED PIPE N TOP IN BLACKTOP. SET TIES.
- 1976 BARNES VOL 5 PG 140 FD 1 1/2" PIPE. REF. COR.
- 1977 BARNES VOL 5 PG 362 FD 1 1/2" PIPE. SET ALUM. MON.
- 1989 WIDOT PROJ. #1704-03-22 MAP #16692 1 1/2" PIPE, (243,506.89; 2,228,617.47)
- 1998 LATHROP CSM23-129 ALUM. MON. 2663.80 TO SE COR SEC 2
- 1988 BARNES VOL 6 PG 388 & 389 NO-41-45W 2621.72 TO NE COR SEC 2, S1-06-00E 2663.97 TO SE COR SEC 2, S89-05-42W 2633.05 TO GEN SEC 2, & S89-05-42W 5294.56 TO W 1/4 COR SEC 2
- 1991 BARNES C-21 RD PAVING PROJECT WILL INVOLVE THIS CORNER. DID NOT ACCEPT NOR REJECT MONUMENT. REFERENCED FOUND MONUMENT SO IT WOULD NOT BE DESTROYED BY THE PAVING PROJECT. FD ALUM. MON 2.5' EAST OF CENTER OF PAVEMENT & REFERENCED SAME. FD NE REFERENCE PIPE.
- 1998 LATHROP CSM VOL 23 PG 129 FD ALUM. SOUTH 2663.80 TO SE COR SEC 2 & N89-50-10W 2629.79 FROM SE COR SEC 2 TO S 1/4 COR SEC 2.
- 2001 LATHROP CSM VOL 25 PG 164 & 167 PK 5335.94 TO L.S. @ E 1/4 COR SEC 1.

C) Was the corner restored through acceptance of (1) an obliterated evidence location, or, (2) a found perpetuated location?

USED MY OLD FIELD OBSERVATIONS. ACCEPTED FOUND ALUM. & REFERENCE MONUMENTS

I, Donald Barnes, hereby certify that the corner location as identified by the corner code index was determined by me under my direction and control and that this U.S. Public Land Survey Monument Record is correct and complete to the best of my knowledge and belief.

Seal
3-07-03

Emboss

Donald Barnes

SHEET 1 OF 1

CORNER CODE C-21(1)

A.E. 7.08 REQUIREMENT