

U.S. PUBLIC LAND SURVEY MONUMENT RECORD

For Public Land Survey Corners In: WI ADMINISTRATIVE CODE A-E 7.08 REQUIREMENT

T. 1 N. - R. 14 E. of the 4th P.M.

CORNER CODE INDEX

(PLACE "◆" SYMBOL AT PROPER PLSS CORNER LOCATION)

	1	2	3	4	5	6	7	8	9	10	11	12	13	14	15	16	17	18	19	20	21	22	23	24	25		
A																						◆					B
B																											C
C																											D
D																											E
E																											F
F																											G
G																											H
H																											I
J																											J
K																											K
L																											L
M																											M
N																											N
O																											O
P																											P
Q																											Q
R																											R
S																											S
T																											T
U																											U
V																											V
W																											W
X																											X
Y																											Y
Z																											Z
	1	2	3	4	5	6	7	8	9	10	11	12	13	14	15	16	17	18	19	20	21	22	23	24	25		

CLINTON TWP
ROCK COUNTY WI

ROCK COUNTY COORDINATES
(GNSS DERIVED VIA WISCORS)

North 231956.64 Elev.

East 554434.29

Hor. Datum NAD83 (NA2011)

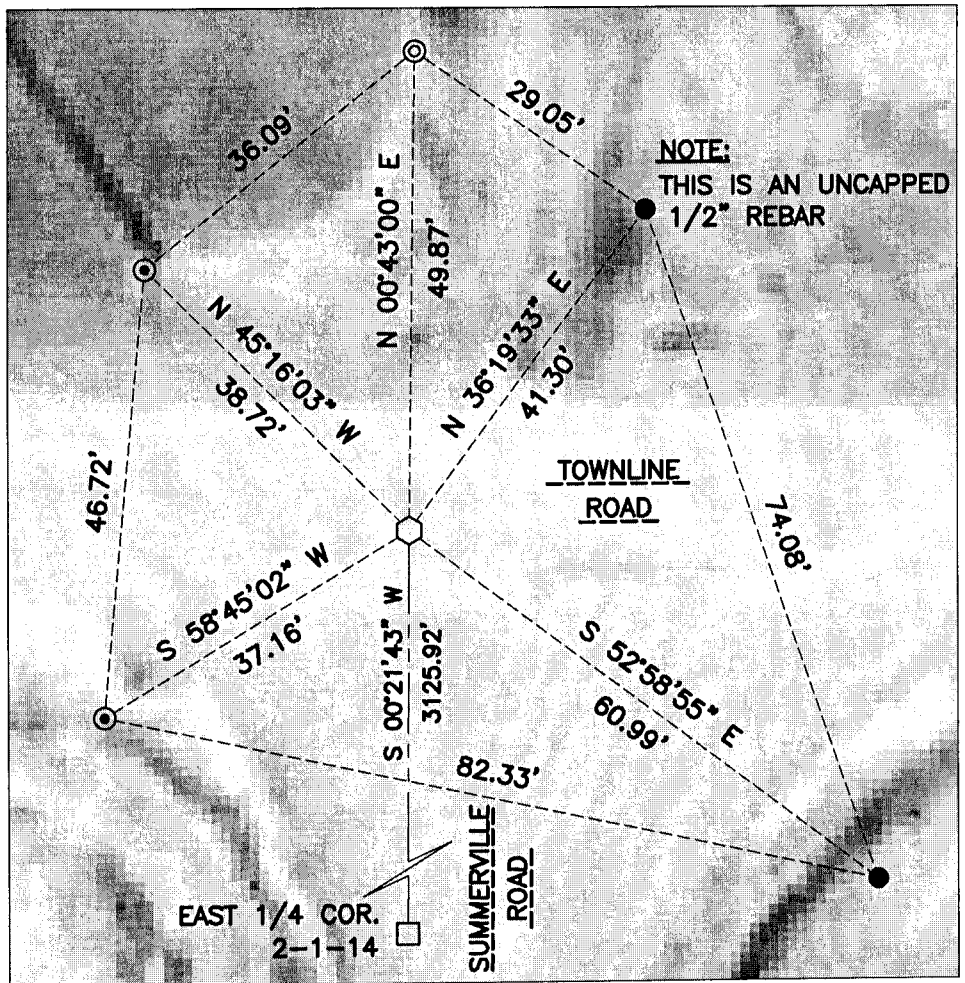
Vert. Datum

BASIS OF BEARINGS

Wisconsin County Coordinate System
Rock County Datum

(a) **LEGEND**

- - 5/8" x 24" REBAR SET, (RED CAP W/"PLSS WITNESS")
- - ALUMINUM MONUMENT SET
- ⊙ - IRON REBAR FOUND
- ⊗ - IRON PIPE FOUND
- ⊕ - IRON PIPE IN MONUMENT BOX FOUND
- - STONE FOUND
- - LIMESTONE FOUND
- △ - RAILROAD SPIKE FOUND
- ◇ - CAST IRON MON. FOUND, (BROKEN)



SHEET 1 OF 2

FIELD BOOK 2013 PAGE # 7

CORNER CODE A-21(1)

B) Describe any record evidence, monument evidence, occupational evidence, testimonial evidence or any other material evidence you considered, and whether the monument was found or placed.

I recovered and accepted cast iron monument with the top broken off as called for on the 1985 A-21 tie-sheet prepared by Don Barnes. Also, I found 3 existing ties and 2 appeared disturbed, (rebar). I straightened and firmed up the ground around them and surveyed them as new ties. The Southwest tie, (rebar), is in an area that appears to be frequently washed out and gets repaired so, I set a 5th tie in the SE quadrant of the intersection. I surveyed the "T" location on the top of the monument, it checks reasonably well with existing the ties and the distance to the E1/4 corner is within 0.04' of Barnes previous measurement.

C) Was the corner restored through acceptance of (1) an obliterated evidence location, or, (2) a found perpetuated location?

Found perpetuated location.

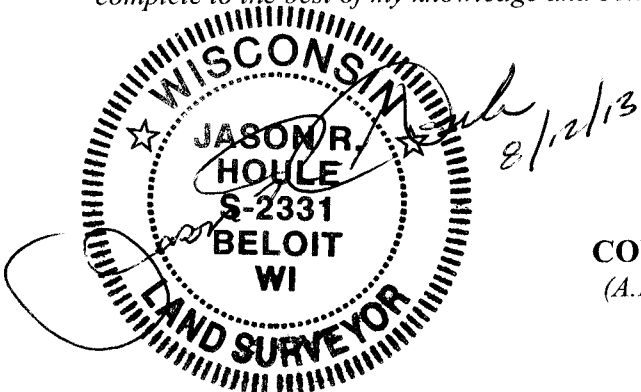
D) Describe any material discrepancy between the location of the corner as restored or reestablished and the location of that corner as previously restored or reestablished by distance and direction. Show the discrepancy on the plan view drawing under (a), above. Show the distances between the corner as previously restored or reestablished and (1) the corner as restored or reestablished, and (2) to at least 4 of the witness monuments shown on the drawing in (a), above.

N/A

(E) Was the corner reestablished through lost corner proportionate methods? If so, show the method, including the directions and distances to other public land survey corners used as evidence or used for proportioning the corner location.

N/A

I, Jason R. Houle, hereby certify that the corner location as identified by the corner code index was determined by me under my direction and control and that this U.S. Public Land Survey Monument Record is correct and complete to the best of my knowledge and belief.



CORNER CODE: A-21(1)
(A.E. 7.08 REQUIREMENT)